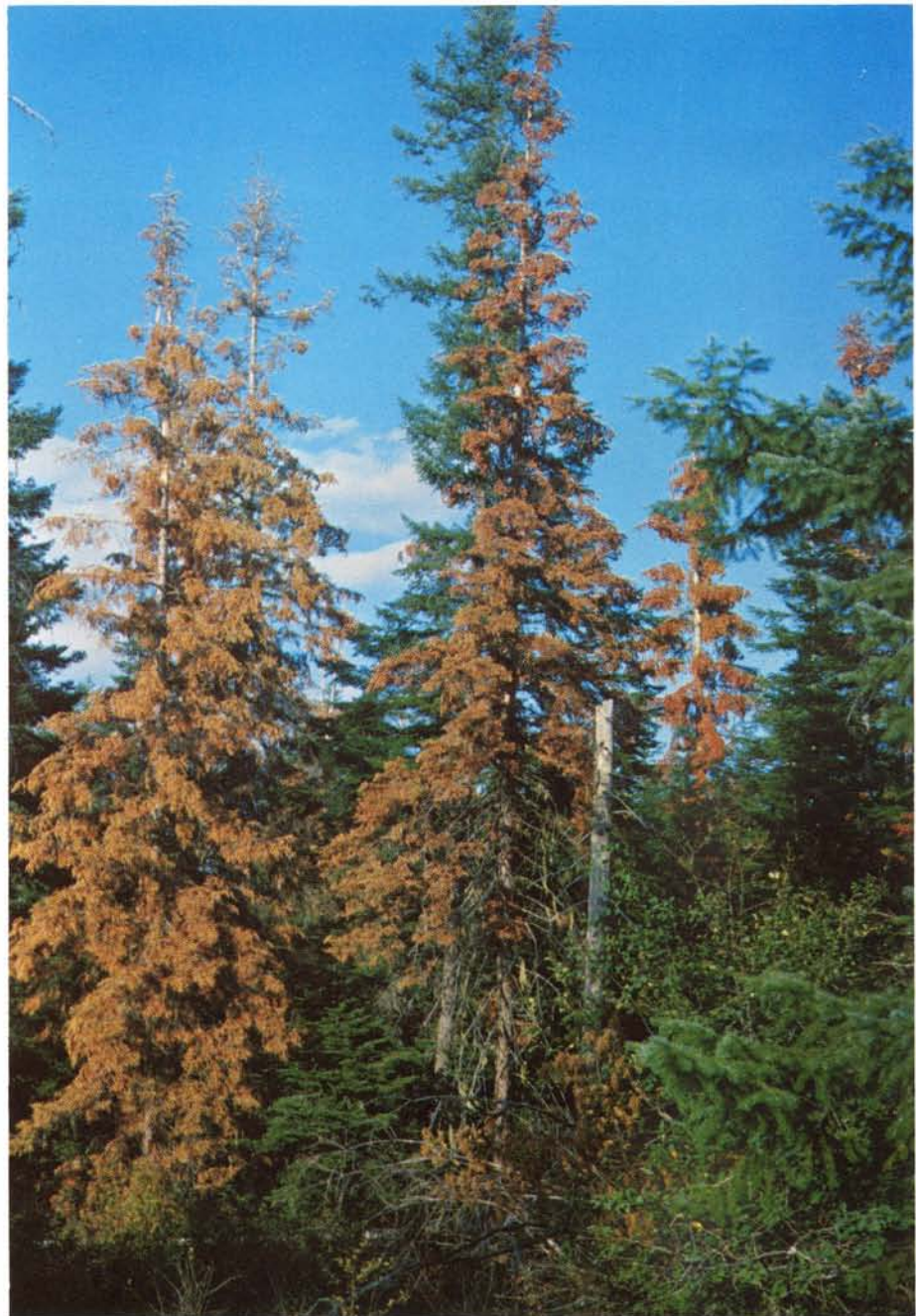


Idaho  
Department  
of Lands

USDA Forest  
Service

North and  
Intermountain  
Regions

# IDAHO Forest Insect and Disease Conditions 1980



**Cover Photos**

*(front)*

*Grand fir killed by the fir engraver beetle, Scolytus ventralis. This pest is a chronic problem in Idaho.*

*(back)*

*A female western spruce budworm with a freshly laid egg mass. This budworm infests portions of all forested areas in Idaho.*

compiled by

**R. Ladd Livingston  
Jerald E. Dewey  
John W. Schwandt  
K. Andrew Knapp  
David P. Beckman**

IDL-81-2

Idaho Department of Lands  
Insect & Disease Control  
P.O. Box 670  
Coeur d'Alene, Idaho 83814

U.S. Department of Agriculture  
Forest Service  
Forest Pest Management

Northern Region  
P.O. Box 7669  
Missoula, Montana 59807

Intermountain Region  
Boise Field Office  
306 N. 5th Street  
Boise, Idaho 83702

FOREST INSECT AND DISEASE CONDITIONS IN IDAHO

1980

by

K. Ladd Livingston, Entomologist  
John Schwandt, Plant Pathologist  
David Beckman, Entomology Technician

Idaho Department of Lands  
Coeur d'Alene, Idaho 83814

Jerald E. Dewey, Entomologist  
Robert L. James, Plant Pathologist  
USDA-Forest Service, Region 1  
Missoula, Montana 59807

K. Andrew Knapp, Biological Technician  
USDA-Forest Service, Region 4  
Boise, Idaho 83707

Report No. 81-13  
June 1981

TABLE OF CONTENTS

	<u>Page</u>
INTRODUCTION . . . . .	1
CONDITIONS IN BRIEF. . . . .	1
ENTOMOLOGY . . . . .	3
BARK BEETLES	
Mountain Pine Beetle . . . . .	3
Fir Engraver Beetle. . . . .	4
Douglas-fir Beetle . . . . .	4
Pine Engraver Beetle . . . . .	7
Western Pine Beetle. . . . .	7
Western Balsam Bark Beetle . . . . .	7
MAJOR DEFOLIATORS	
Western Spruce Budworm . . . . .	7
Douglas-fir Tussock Moth . . . . .	9
Larch Casebearer . . . . .	10
A New Budworm. . . . .	10
Western Pine Shoot Borer . . . . .	10
Gypsy Moth . . . . .	10
CONE AND SEED INSECTS . . . . .	10
PATHOLOGY. . . . .	12
FOLIAGE DISEASES	
Douglas-fir Foliage Diseases . . . . .	12
Larch Foliage Diseases . . . . .	12
Ponderosa Pine Foliage Diseases. . . . .	14
Other Foliage Problems . . . . .	14
DWARF MISTLETOES. . . . .	14
RUSTS	
White Pine Blister Rust. . . . .	15
Western Gall Rust. . . . .	15
DECAYS. . . . .	15
ROOT DISEASES . . . . .	16
OTHER DISEASES	
Atropellis Canker. . . . .	16
Nursery Diseases . . . . .	16

TABLE OF CONTENTS, con.

	<u>Page</u>
LIST OF RECENT PUBLICATIONS . . . . .	18
BIOGRAPHY OF PERSONNEL . . . . .	20
KEY TO TREES KILLED IN DESIGNATED MAP AREAS . . . . .	21
MAP showing areas infested with Douglas-fir beetle, mountain pine beetle, white pine blister rust, and pine engraver beetle	
MAP showing areas infested with fir engraver beetle, western spruce budworm, and larch problems	

## INTRODUCTION

This report summarizes for the State of Idaho the results of aerial and ground surveys conducted in 1980 by the Idaho Department of Lands and the USDA-Forest Service, Northern and Intermountain Regions, to detect forest insect and disease outbreaks or problems. The report has been prepared through a cooperative effort of the State of Idaho and the USDA-Forest Service.

The maps at the end of this report and narrative portion cover pest conditions on forested lands of all ownerships within the State. The green portions of the maps are National Forest land, the white is State, private, and other Federal with major blocks of State ownership outlined with a heavy dark line.

Due to the difficulty of making accurate estimates of the number of trees killed while flying aerial surveys (90-120 mph, 500-2,000 ft), these values should not be taken to be an exact measurement of the damage that has occurred. Comparison of aerial survey data with ground check plots during past surveys has shown that the estimates of number of trees killed are consistently low. However, the location and trends of damage from one year to the next can be accurately shown by the maps and by comparison of this year's counts with last year's.

The cause of damage cannot always be accurately assessed from the air. Because only limited ground checking occurred in 1980, the cause of mortality is based largely on ground survey results from prior years and long-term observations in the area.

## CONDITIONS IN BRIEF

The mountain pine beetle continues to be the most damaging forest insect in Idaho, causing mortality of an estimated 4,587,300 trees, predominantly lodgepole pine. The fir engraver was the second most damaging bark beetle and killed an estimated 20,870 grand fir trees. Overall damage by the Douglas-fir beetle and the pine engraver beetle was at low levels for 1980.

The western spruce budworm continues to be the most damaging defoliator, causing visible defoliation on 1,311,800 acres throughout the State. The Douglas-fir tussock moth is at a very low level, except for an apparently higher population in the Owyhee Mountains. No gypsy moths were found. The new budworm, *Argyrotaenia* near *gogana*, found north of Wallace, Idaho, has increased its range from 1979 and caused defoliation on an additional 4,500 acres in 1980.

Foliage diseases were unusually apparent throughout the State in 1980. Almost all major tree species suffered from needle pathogens and there were numerous reports of foliage problems. In the Cascade-McCall area, discoloration on Douglas-fir and larch was attributed to environmental conditions. While the infected needles are readily observed, actual timber losses from foliage diseases are probably low. Although severely affected trees may have experienced growth losses, most trees will probably recover unless environmental conditions in the spring of 1981 again favor continued disease spread.

Root diseases continue to be the major long-range concern. They are widely distributed and many stands have been severely damaged. Control is difficult.

Nurseries in northern Idaho experienced problems with grey mold blight and Sirococcus blight, a disease not previously reported from the area.

## ENTOMOLOGY

### BARK BEETLES

#### Mountain Pine Beetle

The mountain pine beetle continues to cause significant mortality of lodgepole, ponderosa, and western white pine throughout Idaho. The oldest and most damaging outbreaks are south of the Salmon River. Newer infestations have been observed in northern Idaho during the past 2 to 3 years with a definite increase in tree killing.

In southeastern Idaho the massive infestation in lodgepole pine on the Targhee National Forest and adjoining State and private lands declined approximately 25 percent from 1979. Despite this reduction, the trees killed in 1980 were estimated at nearly 4.1 million. Additional mortality occurred on the south side of Palisades Reservoir on Caribou National Forest lands where over 4,000 dying trees were observed in the McCoy Creek area.

In south-central Idaho on the Sawtooth and Boise National Forests and adjacent private lands, there are several intensive lodgepole pine mortality centers. In the Wood River drainage, approximately 6,000 dead trees were seen from Galena Summit south to Ketchum. The damage is apparently increasing here as the infested area was larger in 1980 than in 1979. In the upper reaches of the North, Middle, and South Forks of the Boise River, there are an additional 7,500 dead trees. The North Fork outbreak was sighted for the first time in 1980.

In southwestern Idaho, the killing of lodgepole pine is accelerating. On the Boise National Forest approximately 6,500 newly dead trees were seen to the east and north of Deadwood Reservoir. This infestation has persisted in the area for several years. Lodgepole and ponderosa pine have suffered heavy mortality along the North Fork of the Payette River and in several of its tributaries from just north of Cascade south to Smith's Ferry. The area to the east of the towns of Donnelly and Lake Fork, between Boulder Creek and Kennally Creek, has especially heavy mortality and approximately 22,000 dead trees were mapped in 1980. To the west, smaller infestations are continuing in the Johnson Creek-Hornet Reservoir area, around the Lost Valley Reservoir, and in the upper end of Lick Creek, a tributary of Wildhorse River.

In northern Idaho, mountain pine beetle outbreaks are generally much younger and less extensive than in southern Idaho. One major reason for the difference is that pure, mature lodgepole pine stands in the north are not as extensive as in the south. In northern Idaho western white pine also serves as a host along with lodgepole and ponderosa pines.



The major damage areas are on the Nezperce and Idaho Panhandle National Forests and on State and private lands south of Lewiston, Idaho. On the Nezperce the main damage is concentrated near Elk City on State, private, and Federal lands, and in the upper reaches of the Red River on National Forest lands. The beetle was found killing root-diseased lodgepole pines at several locations on the Nezperce National Forest. South of Lewiston the outbreak has persisted in lodgepole near Soldiers Meadows Reservoir for 3 to 4 years. In this area there has been an intensive salvage operation with some harvest of susceptible green trees in an effort to avoid further damage. Complex ownership problems have made management against the beetle difficult.

In several areas of northern Idaho the mountain pine beetle has caused damage in stands of western white pine: at the headwaters of the Lochsa River (Clearwater NF), between the Coeur d'Alene River and Halfway Peak north of Kellogg, Idaho, and near Iron Mountain southeast of Bonners Ferry (Idaho Panhandle NF's). White pine weakened by white pine blister rust are often killed by mountain pine beetle.

The total number trees killed by mountain pine beetle in Idaho during 1980 for all areas is shown in tables 1 and 2.

#### Fir Engraver Beetle

Over the past several years, fir engraver beetle activity has fluctuated considerably. The main damage has been in northern Idaho where the insect killed approximately 20,900 grand fir trees in 1980, 6,700 in 1979, and 13,000 in 1978. The 1980 map shows 17 locations of concentrated activity with a total of 18,635 dead trees. Many other dead trees are scattered singly or in very small groups throughout the range of the host. Although dead trees have increased the overall activity level is low at this time. Research and survey results have shown that a high proportion of beetle attacked grand fir have severely diseased roots.

#### Douglas-fir Beetle

Overall, the Douglas-fir beetle has declined steadily since 1978 and the pattern continued in 1980. Mortality groups generally were smaller and more widespread than in past years. In the 12 areas of concentrated mortality shown on the map (areas A-L) only 3,625 dead trees were counted, 12,600 less than were seen in the same general areas in 1979. The greatest decrease occurred in northern Idaho in the Nezperce National Forest. Ground survey data showed that a substantial portion of Douglas-fir mortality on the Nezperce was in root-diseased stands.

Table 1.--1980 Southern Idaho bark beetle conditions;  
trees killed by bark beetles

National Forest and adjacent State and Private (S&P)	Number of trees killed		
	Mountain pine beetle	Douglas-fir beetle	Pine engraver beetle
Boise NF	37,311	1,406	5,049
S&P	17,550	1,720	15
Caribou NF	7,485	190	--
S&P	110		50
Challis NF	30	--	--
S&P			
Payette NF	23,113	1,265	593
S&P	13,600	15	
Salmon NF	--	64	277
S&P		80	
Sawtooth NF	18,785	660	--
S&P	360		--
Targhee NF	4,100,000	271	--
S&P	345,000		220
Total NF	4,186,724	3,856	5,919
Total S&P	376,620	1,815	285
Grand Total	4,563,344	5,671	6,204

Table 2.--1980 Northern Idaho bark beetle conditions;  
trees killed by bark beetles

NATIONAL FOREST 1/ OR STATE FOREST PROTECTIVE DISTRICT	MOUNTAIN PINE BEETLE		FIR ENGRAVER BEETLE		DOUGLAS-FIR BEETLE		PINE ENGRAVER BEETLE		WESTERN BALSAM BARK BEETLE	
	Trees 2/ killed	Volume MBF	Trees 3/ killed	Volume MBF	Trees 4/ killed	Volume MBF	Trees 5/ killed	Volume MBF	Trees 6/ killed	Volume MBF
LPNE	1979	146	87.0	1,218	365.4	317	126.8	83		
	1980	3,647	2,131.9	6,121	1,836.3	55	22.0	162		
Clearwater	1979	2	1.2	414	124.2	976	390.4	5	--	--
	1980	178	74.2	1,301	389.1	178	62.4	30	30	
Nezperce	1979	845	68.5	98	29.4	3,950	1,552.8	20	--	--
	1980	2,141	178.6	3,627	1,088.1	1,531	612.4	388	815	
Priest Lake	1979			175	52.5	40	16.0	10		
	1980			95	28.5	--	--	80		
Pend Oreille	1979	--	--	302	90.6	--	--	1,072		
	1980	22	1.1	290	87.0	48	14.4	3,391		
Mica	1979	--	--	812	243.6	10	4.0	870		
	1980	148	7.4	767	230.1	38	15.2	12,498		
Cataldo	1979	--	--	--	--	--	--	--		
	1980	2,011	171.6	547	164.1			56		
West St. Joe	1979			1,830	549.0	--	--	275		
	1980			3,715	1,114.5	345	138.0	5,116		
Kendrick	1979			850	225.0	--	6.4	176		
	1980			1,697	509.1	16		1,011		
C.P.T.P.A.	1979	--	--	1,531	459.3	199	79.6	15		
	1980	42	20.2	2,308	692.4	191	73.2	50		
Craig Mtns.	1979	10,321	877.3	381	114.3	418	167.2	143		
	1980	15,955	1,381.9	261	78.3	213	85.2	4,830		
Maggie Cr.	1979	--	--	76	22.8	35	14.0	5		
	1980	4	1.6	110	33.0	53	15.9	1		
Totals	1979	11,314		7,687		5,945		2,674	--	--
	1980	24,148		20,839		2,668		27,613	845	
Net Change		+12,834		+13,152		-3,277		+24,939	+845	

1/ All ownerships within National Forest boundaries,  
exclusive of State Forest Protective Districts  
2/ Lodgepole, ponderosa, and western white pine

4/ Douglas-fir  
5/ Ponderosa pine  
6/ Subalpine fir

### Pine Engraver Beetle

Pine engraver beetle populations for the State have increased overall, mainly due to the threefold increase in activity in northern Idaho. The number of dead trees in the areas shown on the map increased from 8,300 in 1979 to 28,165 in 1980. The increases were principally on State and private lands from Moscow to Priest River.

The beetle caused scattered mortality in ponderosa pine stands in southern Idaho but at a reduced level from past years. The most serious infestation is in the Idaho City area where an estimated 2,000 second growth ponderosa pine were killed. Scattered mortality was also observed on the Payette and Salmon National Forests.

### Western Pine Beetle

Western pine beetle infestations have declined to low levels throughout the State and are confined mainly to single large overmature ponderosa pines widely scattered throughout the pine type. One exception is a forested cemetery in the city of Coeur d'Alene. The cemetery has a dense stand of approximately 600 mature ponderosa pine, 80 of which have been killed by beetles during the past 3 years. Infested trees are currently being removed as a control effort.

### Western Balsam Bark Beetle

The western balsam bark beetle is a perennial cause of mortality throughout the subalpine fir habitat type of Idaho. Chronic populations exist in the mountains of eastern Idaho and other areas. In northern Idaho an outbreak on the Nezperce National Forest killed 815 trees in 1980.

## MAJOR DEFOLIATORS

### Western Spruce Budworm

Defoliation caused by western spruce budworm increased by over 123,500 acres within the State between 1979 and 1980. Total defoliation was 1,311,800 acres. The greatest increases were in eastern Idaho on the Targhee and Caribou National Forests and on adjacent State and private lands.

Defoliation remained at a very low level in northern Idaho in 1980, but it did increase slightly. No defoliation was observed in 1979. For 1980, 600 acres of light defoliation were aurally detected on the Idaho Panhandle National Forests southeast of Avery. On the Clearwater National Forest 320 acres of light defoliation were mapped east of Pierce and north of Kelly Creek Ranger Station. Another 850 acres of light defoliation were detected on the Nezperce National Forest near Magruder.

In southern Idaho the budworm defoliated approximately 1,310,000 acres, an increase of over 121,800 acres over 1979 (table 3). Increases in visible defoliation occurred on the Salmon National Forest and adjacent BLM lands and the Targhee and Caribou National Forests. The Targhee National Forest showed the greatest increase in defoliation; an additional 200,000 acres were mapped this year for a total of 405,000 acres. Defoliation increased on the Caribou National Forest as the result of an expansion from the existing infestation on the Targhee National Forest near Palisades Reservoir. Decreases in budworm activity occurred throughout the Boise National Forest, with the exception of the Deadwood Reservoir area where 65,000 acres of new defoliation were recorded primarily in Douglas-fir. On the Payette National Forest a decrease of 100,000 acres occurred mostly in grand fir in the West Mountain and Boulder Creek areas.

The main western spruce budworm infestation on State and private lands lies to the south and east of Idaho Falls in the Blackfoot Mountains, Sheep Mountain, and Brockman areas. Aerial survey of the Blackfoot Mountains area showed increased defoliation in 1980, with 5,830 additional acres visibly defoliated; total defoliation is 17,930 acres. Top kill of subalpine fir was also seen for the first time. Egg populations were surveyed, and moderate to heavy defoliation is anticipated for 1981 with subsequent increased growth loss and top kill. Predicted defoliation is very light for Sheep Mountain but moderate to heavy for the Brockman area.

Table 3.-- Southern Idaho acres of spruce budworm defoliation

National Forest and adjacent State and private (S&P)	Acres
Boise NF	204,181
S&P	10,880
Caribou NF	61,722
S&P	18,530
Challis NF	--
S&P	--
Payette NF	207,617
S&P	24,000
Salmon NF	363,496
S&P	8,000
Sawtooth NF	--
S&P	--
Targhee NF	405,359
S&P	6,200
Total NF	1,242,375
Total S&P	67,610
Grand Total	1,309,985

Douglas-fir Tussock Moth

Again in 1980 no evidence of Douglas-fir tussock moth activity was observed through the extensive aerial detection surveys. Pheromone-baited sticky traps were placed at all known locations of previous tussock moth outbreaks. Although a few moths were captured, numbers were too low to suggest a significant population buildup in 1981. One exception was near South Mountain in the Owyhee Mountains of southwestern Idaho. Pheromone traps in this area caught enough moths to warrant closer checking in 1981. Moths or caterpillars were also found in two residential areas--near Hailey, Idaho, and in ornamental spruce on a farm just north of Grangeville, Idaho. These findings are of interest as previous outbreaks have been prefaced by finding tussock moths in residential areas.

Table 4.--Douglas-fir tussock moth pheromone trapping results.

<u>Plot location</u>	<u>Moths caught in 1980 survey traps</u>
Elk Mountain	0
Coeur d'Alene Mountain	0
Lolo Pass	0
Charles Butte	0
Peterson Point	0
East Dennis	0
East Gold Hill	0
Flat Creek	1
Long Creek	0
Paradise Point	0
Mineral Mountain	0
Mission Mountain	0
Spring Valley	0
Vassar Meadows	0
Bedrock Gulch	0
Lightning Creek	0
Caribou Creek	0
Troy	0
Moscow	0
Coeur d'Alene	0
Dewey Peak	275
Mill Creek	3
Lodge Point	1
Pine Knob	0
Potato Hill	0
Big Tinker Creek	2
Shells Lick	0
Fish Creek	0
Free Use	0
South Fork Cow Creek	0
Cow Creek Saddle	0
Christie Creek	0

### Larch Casebearer

Larch casebearer defoliation was about the same in intensity and extent in northern Idaho as it was in 1979. Associated needle diseases made it difficult to determine how much casebearer defoliation actually exists.

In southern Idaho, the larch casebearer has continued to expand its range to match the range of larch, and in some areas the populations have increased significantly from prior years.

### A New budworm

This insect (Argyrotaenia near gogana) was first reported as a significant forest pest in 1978, when about 40 acres of mainly mountain hemlock were heavily defoliated in the Shoshone Creek drainage north of Wallace. The infestation spread to about 1,500 acres of aerially visible defoliation in 1979. In 1980 over 4,500 acres were defoliated on the Idaho Panhandle National Forests and additional defoliation exists in adjacent stands on the Lolo National Forest in Montana (figure 1). Top killing of trees, especially the understory, is quite pronounced in some areas.

### Western Pine Shoot Borer

The western pine shoot borer is coming to be recognized as a forest insect pest of serious consequence, especially in second growth ponderosa pine. It has been found in all ponderosa pine stands surveyed to date. It has been especially prevalent in open, second growth stands where it causes significant loss of height growth.

### Gypsy Moth

No gypsy moths were found in our pheromone trapping surveys in 1980. Attractant traps were placed at 108 sites throughout the State, in campgrounds, rest stops, trailer parks, and other sites where tourists would likely stop. These sites were monitored because the spread of gypsy moth into Idaho is most likely to occur on vehicles from infested areas.

## CONE AND SEED INSECTS

Surveys were conducted in 11 seed production areas and one seed orchard on the Idaho Panhandle, Clearwater, and Nezperce National Forests. Insects, primarily cone worms, midges, and cone beetles, caused damage at some locations in up to 75 percent of the cones of some tree species. As a rule, the smaller the cone crop, the greater the amount of injury.

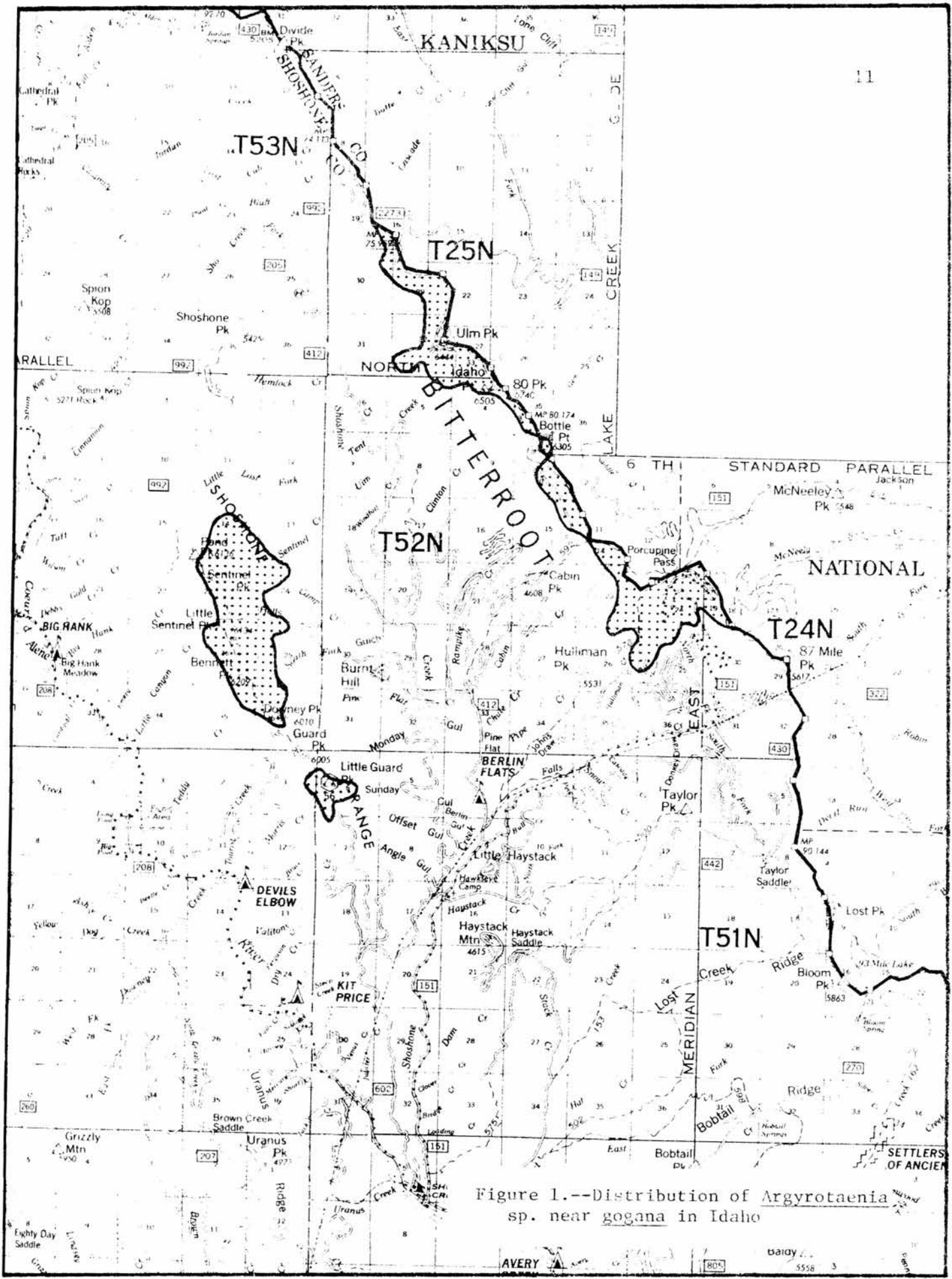


Figure 1.--Distribution of *Argyrotaenia* sp. near *gogana* in Idaho

AVERY

5558 3



PATHOLOGY

## FOLIAGE DISEASES

Needle diseases were widespread in 1980. Prolonged cool, moist weather may have provided ideal conditions for many needle fungi.

Douglas-Fir Foliage Diseases

During the summer, locally heavy discoloration of the interior needles on Douglas-fir of all size classes was noted in the forests around Cascade, Idaho. Similar symptoms were observed in other southern Idaho stands where Douglas-fir was a major component. Since needle fungi or other pathogens were not associated with the discoloration, climatic factors were probably involved.

Rhabdocone needle cast was occasionally observed on Douglas-fir during the spring in Long Valley and Round Valley near McCall, Idaho. Moderate spotting levels of current year's foliage were also noted during the fall.

Larch Foliage Diseases

Western larch experienced a variety of foliage problems throughout the year. Approximately 7,000 acres of larch in southern Idaho were discolored a bright red-orange this year. Early spring damage was characterized by rapid discoloration of emerging needles and, in some cases, death of new branches. Although casebearer, western spruce budworm, and a needle rust were found, they were responsible for only a minor portion of the discoloration. Other needle fungi were not identified, and we suspect that damage resulted from climatic factors or nonsporulating needle pathogens.

Discoloration of a midseason flush of needles was caused predominantly by Meria needle cast. In southern Idaho, damage was observed in larch along drainages feeding into the Little Salmon River north of New Meadows and also around the south and west sides of Cascade Reservoir. Meria needle cast was present in northern Idaho around Priest Lake throughout the year, causing needles to turn brown and drop prematurely from branches.

In late May, larch south of Priest Lake in northern Idaho were severely affected by needle casts as well as by larch casebearer. Trees of all ages were affected; damage was often most severe in lower portions of crowns. Much early spring discoloration was caused by Hypodermella needle cast (figure 1). As infected needles turned brown and died, they withered and dropped from spur shoots instead of falling from branches (figure 2). Black fruiting bodies produced on these needles characteristically cling to the spur shoots for more than one season.



Figure 2.--Larch stand severely infected with *Hypodermella* needle cast.



Figure 3.--Larch needles infected with *Hypodermella* needle cast. As needles die, they become grey and hang from shoots throughout the year instead of being shed in the fall.

### Ponderosa Pine Foliage Diseases

"Greybeard" needle cast, widespread in many drainages of the Boise National Forest in 1979, was not highly visible this year. Infected trees near Crouch, Idaho, appeared to be recovering. Affected trees had persistent attachment of older grey needles.

Several areas had extensive Elytroderma needle disease this year. Some of the most heavily infected areas included drainages feeding into the middle and south forks of the Boise River, the McCall-New Meadows area, and much of the Boise Basin. A high percentage of previous year's needles on many sapling and pole-size pine was discolored a vivid orange-red during early spring to early summer. Older infections cause trees to produce many small branches that create a "brooming" effect, which may be easily confused with dwarf mistletoe infections by inexperienced crews in areas where both diseases are found.

### Lodgepole Pine Foliage Diseases

The extensive infections of lodgepole pine by Lophodermella needle cast in eastern Idaho have subsided. Only infrequent infection was reported this year. A needle rust was also occasionally observed on lodgepole pine in southwestern Idaho.

### Other Foliage Problems

Nearly all subalpine fir in the south hills of the Sawtooth National Forest were infected with needle cast and needle rust fungi. Surveys indicated more than 99 percent of the trees were infected; however, the infections were relatively light.

At least three different pathogens were identified on aspen foliage. They were leaf spot, ink spot, and leaf rust. Infected trees were observed throughout the aspen type in southern Idaho.

### DWARF MISTLETOES

Dwarf mistletoe surveys in southern Idaho showed an average of 60 percent of lodgepole pine is infected, resulting in a total volume loss of 28.5 million cubic feet per year. In addition, on some forests up to 65 percent of the ponderosa pine and 80 percent of the Douglas-fir are infected.

Information obtained during these surveys will be compared to future surveys to determine reinvasion, spread, and intensification rates in Idaho forests. The surveys can aid in selection of the best management alternatives for infected areas, and future surveys will help re-evaluate the effectiveness of management activities in reducing dwarf mistletoe impacts.

Many forests still contain areas with a highly infected overstory. Overstory removal must be incorporated into management plans along with sanitation of young stands if susceptible trees are to be maintained on these sites. Guidelines have been developed that incorporate dwarf mistletoe control techniques into normal timber management activities.

## RUSTS

### White Pine Blister Rust

Blister rust continues to plague white pine forests throughout Idaho. However, positive steps are being taken to insure that white pine remains a viable crop tree within the State. Managers are selecting rust-resistant white pine as leave trees to improve survival of subsequent regeneration.

A continuing program of improving rust resistance utilizes seed orchards which are yielding resistant seed. In addition, research at the Moscow Forestry Sciences Laboratory will assist forest managers in selecting rust resistant stock and will help determine life expectancy of infected trees. A computer model for growth is being prepared for addition to the prognosis model that will assist managers in evaluating effects of management activities in areas with white pine.

### Western Gall Rust

This common rust disease can be found throughout the State on lodgepole pine and ponderosa pine. Mortality usually occurs in reproduction and older infected trees, which are often poorly formed and become susceptible to wind breakage. Natural resistance to this disease is common.

## DECAYS

Decay is common in old growth stands and previously logged areas where residual trees are damaged. In young stands, small amounts of decay may create major defects by the time trees are harvested.

An evaluation was recently conducted to ascertain incidence of decay in potential leave trees at three thinning areas in northern Idaho. Twenty trees from each stand were randomly selected and examined for decay using laboratory culturing techniques. Results indicated that decay had already started in less than 10 percent of the trees. Future decay losses can be avoided by careful selection of leave trees. Indian paint fungus was common only after trees were 60 years old; shorter rotations may be needed in which 40-year-old trees are released.

## ROOT DISEASES

Root diseases are widespread throughout forests in northern Idaho, especially in Douglas-fir and grand fir habitat types. Mortality and growth loss are significant within heavily infected stands. Research and survey results indicate that a high proportion of the Douglas-fir and true fir attacked by bark beetles have been severely weakened by root disease. The presence of insects and diseases, which interact as a complex in causing tree mortality, makes recognition and treatment of root disease difficult. All causal factors must be considered in making sound management prescriptions.

Common root disease symptoms include varying stages of decline (recognized by off-color, thin crowns, and stress cone crops) and pockets of windthrow. Close examination of root diseased trees often reveals heavy basal pitch flow, discolored bark, and distinctive patterns of fungal tissue on or under the bark. Many different fungi may be involved in causing root diseases.

Surveys on the Idaho Panhandle and Nezperce National Forests in northern Idaho indicate that almost 38,000 acres (2 percent) and 10,000 acres (1 percent), respectively, of the commercial forest land are occupied by large root disease centers detectable from aerial photographs. Much of the root disease on the Nezperce occurred on insect-infested lodgepole pine, grand fir, and Douglas-fir. Scattered root disease causing small group or individual tree mortality is also common. Similar surveys are planned for the Clearwater National Forest.

Research on root diseases is needed to help provide management direction for reducing the serious losses.

## OTHER DISEASES

Atropellis Canker

Atropellis canker in southern Idaho was confirmed in a 60-year-old lodgepole pine stand in the Yellow Jacket Creek area of the Payette National Forest, 15 miles northwest of New Meadows. Seventy-five to 80 percent of the lodgepole pines were infected. Cankers are generally long and narrow with black-stained wood underneath.

Nursery Diseases

Extensive needle and twig blight of 2-0 Engelmann spruce seedlings was encountered at the Coeur d'Alene Nursery last spring. Grey mold and Phoma blight were associated with the disease. Extended periods of cool, wet weather provided ideal conditions for buildup and proliferation of the disease.

Two private nurseries near Bonners Ferry in northern Idaho suffered severely from *Sirococcus* tip blight on 1-0 ponderosa pine. While this fungus is common in the Midwest and West Coast nurseries, it has never been reported as a problem in our area. Characteristic symptoms include small purplish cankers at the base of new shoots which cause shoot tips to curl over sharply and die (figure 3). Small black fruiting bodies are produced on the dead needles and infected stems. The fungus is considered an early spring problem during cool, moist weather, but losses at these nurseries did not occur until late summer. A combination of chemical sprays and freezing fall temperatures reduced further spread. Observations will be made in the spring of 1981 to monitor possible further activity.



Figure 4.-- Typical early symptoms of *Sirococcus* tip blight showing the characteristic bending of shoots at the point of infection.

LIST OF RECENT PUBLICATIONS

- Beveridge, R.L.  
1979. Effects of defoliations by western spruce budworm, Salmon, Targhee, and Bridger-Teton National Forests. USDA-Forest Serv., Intermountain Region, Ogden, UT. Report R4-80-3.
- Dewey, J.E. and O.J. Dooling  
1980. Forest insect and disease conditons in the Northern Region, 1979, Report 80-7.
- Dooling, O.J.  
1980. Regional summary of forest insects and diseases, 1979. USDA-Foest Service, Northern Region, Missoula, MT. Report 80-1.
- James, R.L.  
1980. Engelmann spruce needle and tip blight at the Coeur d'Alene Nursery, Idaho. USDA-Forest Service, Northern Region, Missoula, MT. Report 80-21.
- Knopf, J.A.E.  
1979. Western spruce budworm conditons, Region 4. USDA-Forest Serv., Intermountain Region, Ogden, UT. Report R4-80-5.
- R.L. Livingston  
1979. The pine engraver beetle in Idaho, life history, habits and management recommendations. Idaho Department of Lands, Report 79-3, 8 pp.
- R.L. Livingston and D. Beckman  
1979. Evaluation of the western spruce budworm infestation in the Blackfoot Hills, Eastern Idaho Supervisory Area. Idaho Department of Lands, Report 79-5, 7 pp.
- R.L. Livingston, D. Beckman, and M. Weadick  
1979. Fir engraver - grand fir thinning impact study, Clearwater Supervisory Area. Idaho Department of Lands, Report 79-2, 14 pp.
- R.L. Livingston and J. Schwandt  
The western pine shoot borer, Eucosma sonomana in ponderosa pine reproduction, Lolo Breaks Timber Sale, Clearwater Supervisory Area. Idaho Department of Lands, Report 79-6, 9 pp.
- R.L. Livingston, J. Schwandt, and D. Beckman  
1980. Forest insect and disease conditions in Idaho 1978-1979. Idaho Department of Lands, Report 80-1, 31 pp.
- Lowe, C.A. and M.W. Moyer  
1979. Forest insect and disease conditions, Intermountain Region. USDA-Forest Serv., Intermountain Region, Ogden, UT.

- McGregor M.D., K.E. Gibson, and D.D. Bennett  
1980. Bark beetle conditions, 1979, USDA-Forest Serv., Northern Region, Missoula, MT. Report 80-6.
- J. Schwandt  
1979. Survey for hazardous trees in Round Lake State Park, Idaho. Idaho Department of Lands, Report 79-4, 10 pp.
- J. Schwandt  
1981. Dwarf mistletoe surveys aid in making management decisions in southwestern Idaho. Idaho Department of Lands, Report 81-1, 12 pp.
- J. Schwandt, L. Merrifield, and L. Plato  
1981. Sirococcus tip blight outbreak in northern Idaho nurseries. Idaho Department of Lands, Report 81-3.
- Thier, R.W. and R.L. Beveridge  
1979. Biological evaluation, bark beetle infestation for proposed Grimes Creek and Side Hollow Timber Sales. USDA-Forest Serv., Intermountain Region, Ogden, UT. Report R4-80-1.
- Tunnock, S. and J. Hard  
1980. A budworm, Argyrotaenia sp., outbreak on the Wallace and Cabinet RD's, Idaho Panhandle and Kootenai NF's. USDA-Forest Serv., Northern Region, Missoula, MT. Report 80-5.
- Tunnock, S. and H. Meyer  
1980. Damage by the budworm, Argyrotaenia sp., USDA-Forest Serv., Northern Region, Missoula, MT, Report 80-22.
- Valcarce, A.C.  
1979. Biological evaluation, larch casebearer, Payette and Boise National Forests. USDA-Forest Serv., Intermountain Region, Ogden, UT. Report R4-80-2.
- Valcarce, A.C.  
1980. Biological evaluation, larch casebearer, Payette and Boise National Forests. USDA-Forest Serv., Intermountain Region, Ogden, UT. Report R4-80-6.
- Valcarce, A.C., M.M. Ollieu, D.J. McClymondus, and G. Kaiser  
1978. Rating lodgepole pine stands for mountain pine beetle hazard, Sawtooth National Forest, Twin Falls Ranger District. USDA-Forest Serv., Intermountain Region, Ogden, UT. Report R4-80-4.







## MOUNTAIN PINE BEETLE ATTACKS, 1980

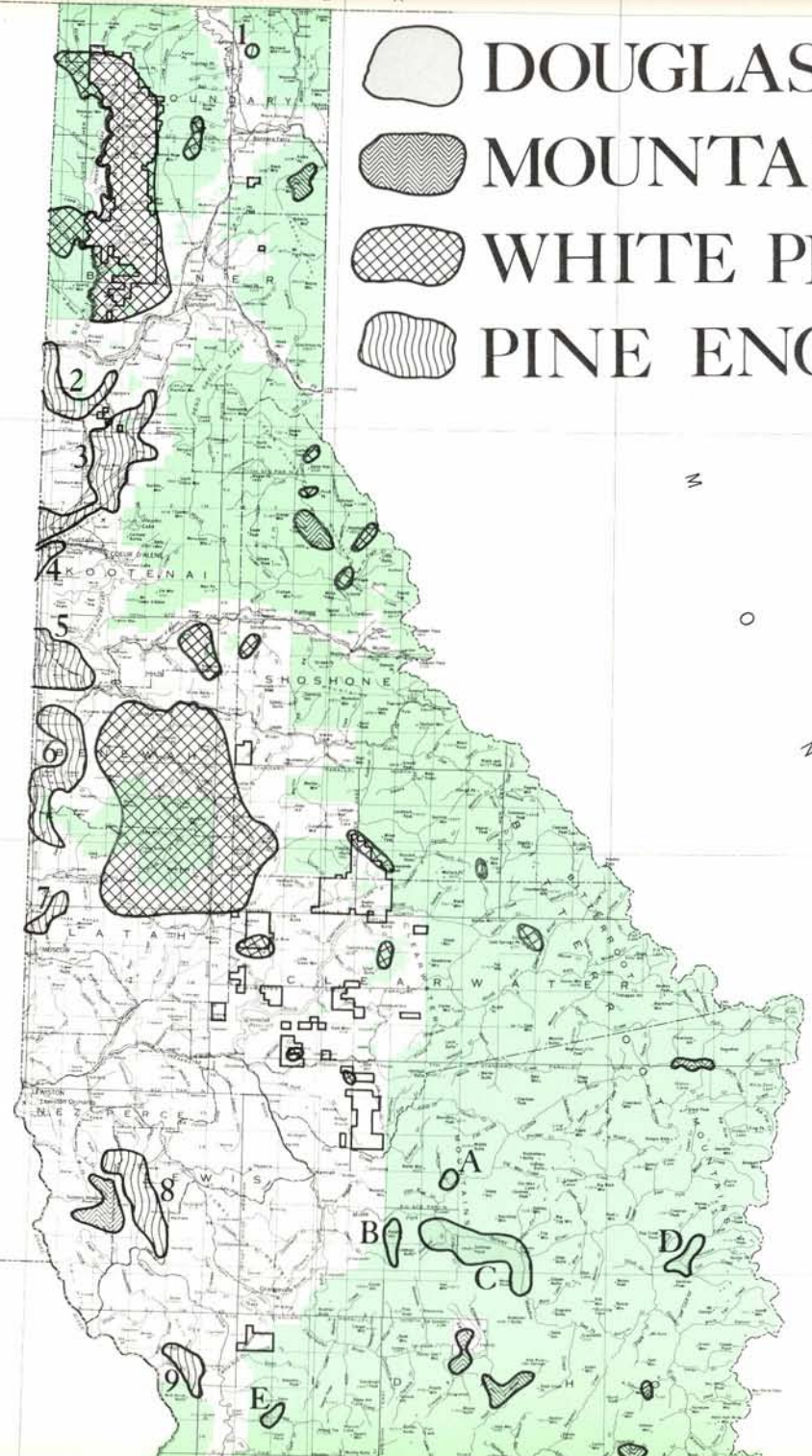
<u>Map Designation</u> <sup>1/</sup>	<u>No. Dead Trees</u>
North Idaho	
Iron Mountain	2,620
Grizzly Mountain	155
Lochsa River	85
Soldiers Meadow Reservoir	16,000
Elk City	1,125
Red River	670
Magruder Mountain	310
Dennis Mountain	2,370
Southwest Idaho	
Lick Creek	500
Lost Valley Reservoir	300
Pyramid Point	6,000
Roseberry	22,000
Deadwood River	400
Deadwood Reservoir	6,000
North Fork Boise River	1,500
Middle Fork Boise River	5,000
South Fork Boise River	4,000
Big Wood River	1,500
Smoky Mountains	4,500
Harrison Mountain	220
Eastern Idaho	
Spencer	2,500
Rattlesnake Creek	12,000
Kilgore	17,000
Henrys Lake	51,000
Tygee Creek	21,000
Inland Park	3,821,480
Palisades Reservoir	6,000

<sup>1/</sup> Locations are listed generally from north to south and west to east.

C A N A D A  
N  
O  
T  
G  
N  
I  
H  
S  
A  
W

-  DOUGLAS-FIR BEETLE
-  MOUNTAIN PINE BEETLE
-  WHITE PINE BLISTER RUST
-  PINE ENGRAVER BEETLE

1980



UNITED STATES  
DEPARTMENT OF THE INTERIOR  
GEOLOGICAL SURVEY  
STATE OF IDAHO

Scale 1:1,000,000  
1 inch equals approximately 16 miles

Legend

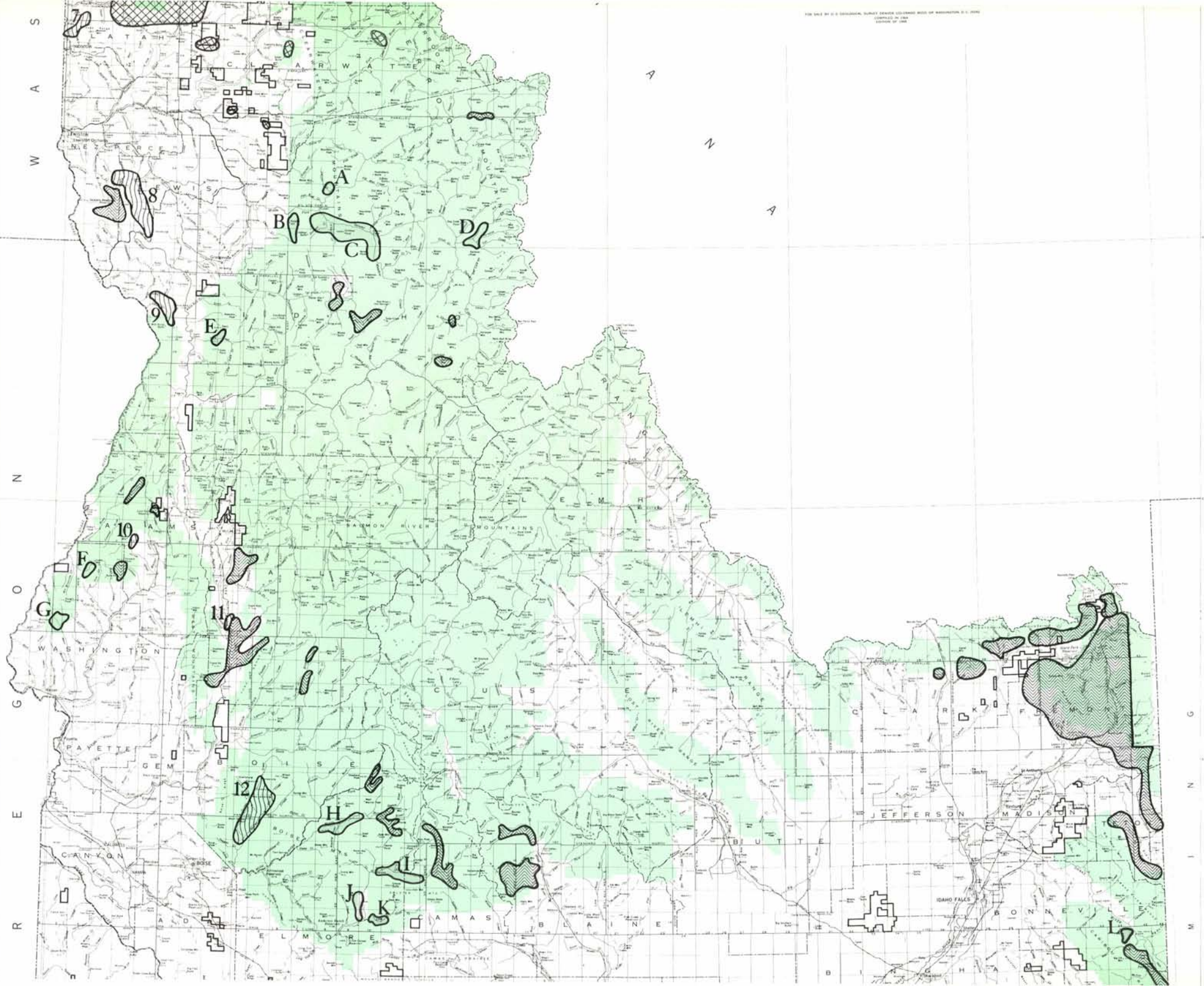
Source of Data

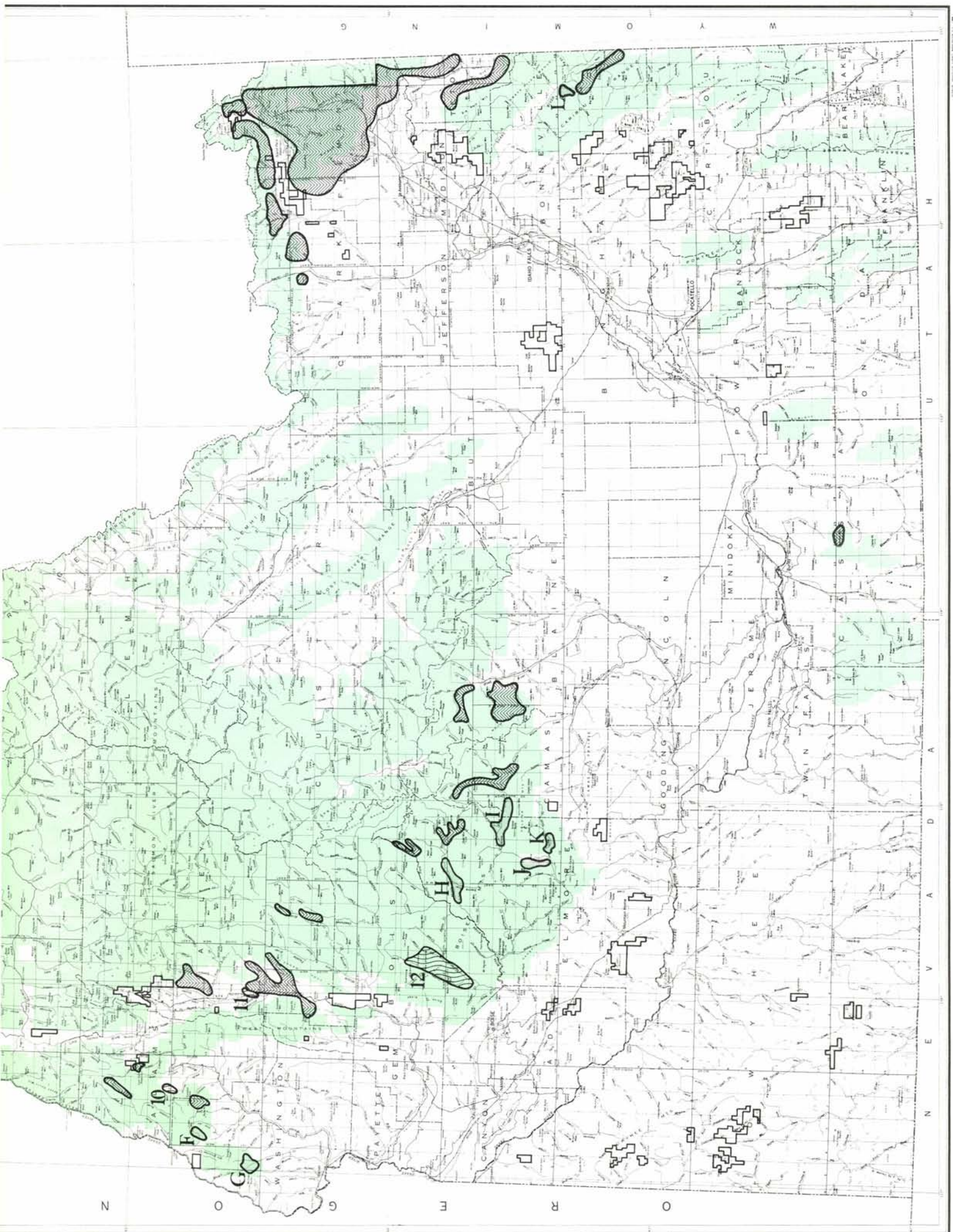
BOISE  
TWIN FALLS  
RATON  
MADISON

POPULATION 1980




BOISE 200,000  
TWIN FALLS 100,000  
RATON 10,000  
MADISON 10,000

THE SALE BY U.S. GEOLOGICAL SURVEY READERS CONSIDERS BASIS ON WASHINGTON D.C. 20508  
COMPILED IN 1984  
EDITION OF 1984

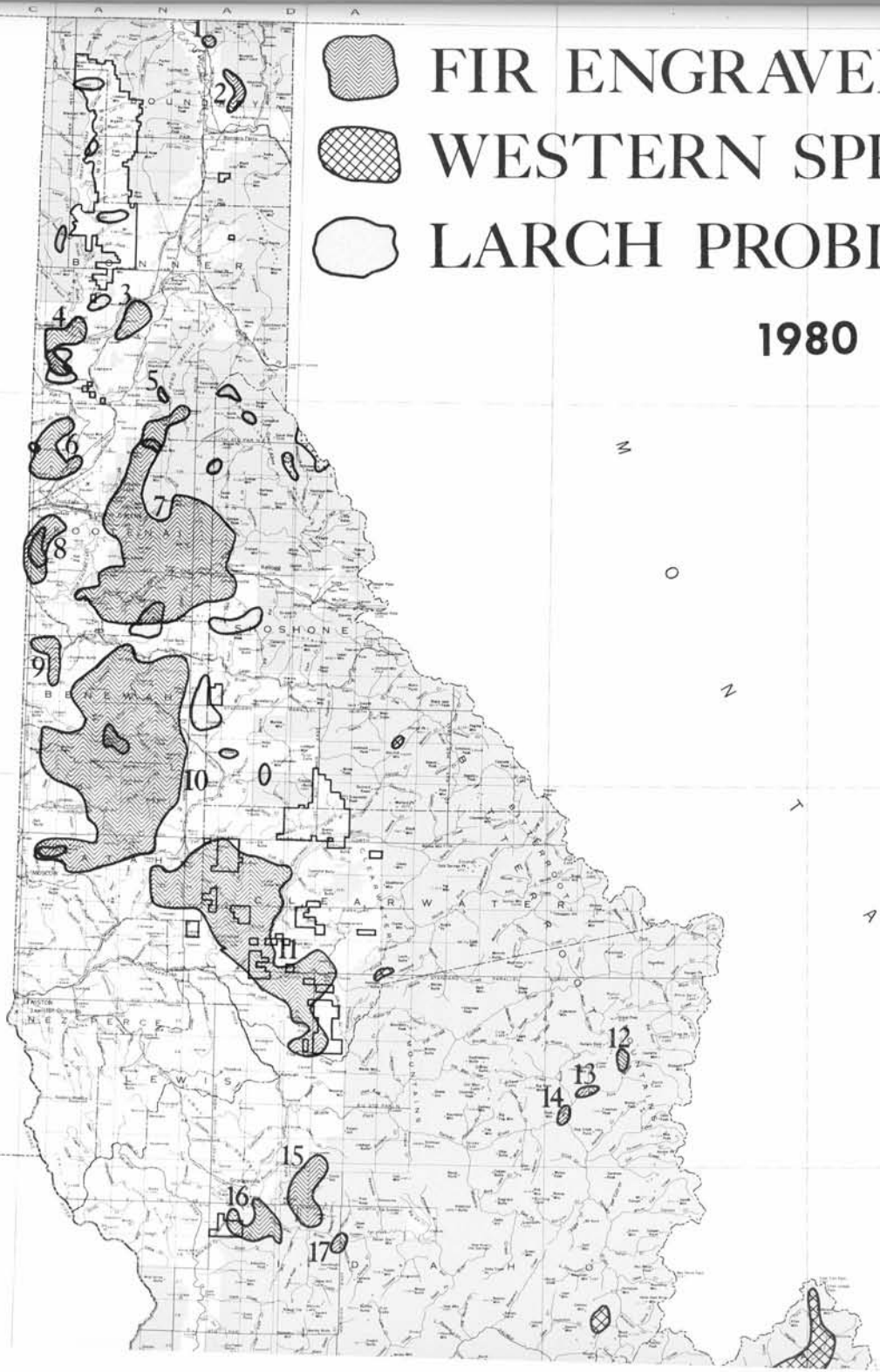




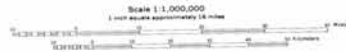
N  
O  
T  
G  
N  
I  
H  
S  
A  
W

-  FIR ENGRAVER BEETLE
-  WESTERN SPRUCE BUDWORM
-  LARCH PROBLEMS

1980



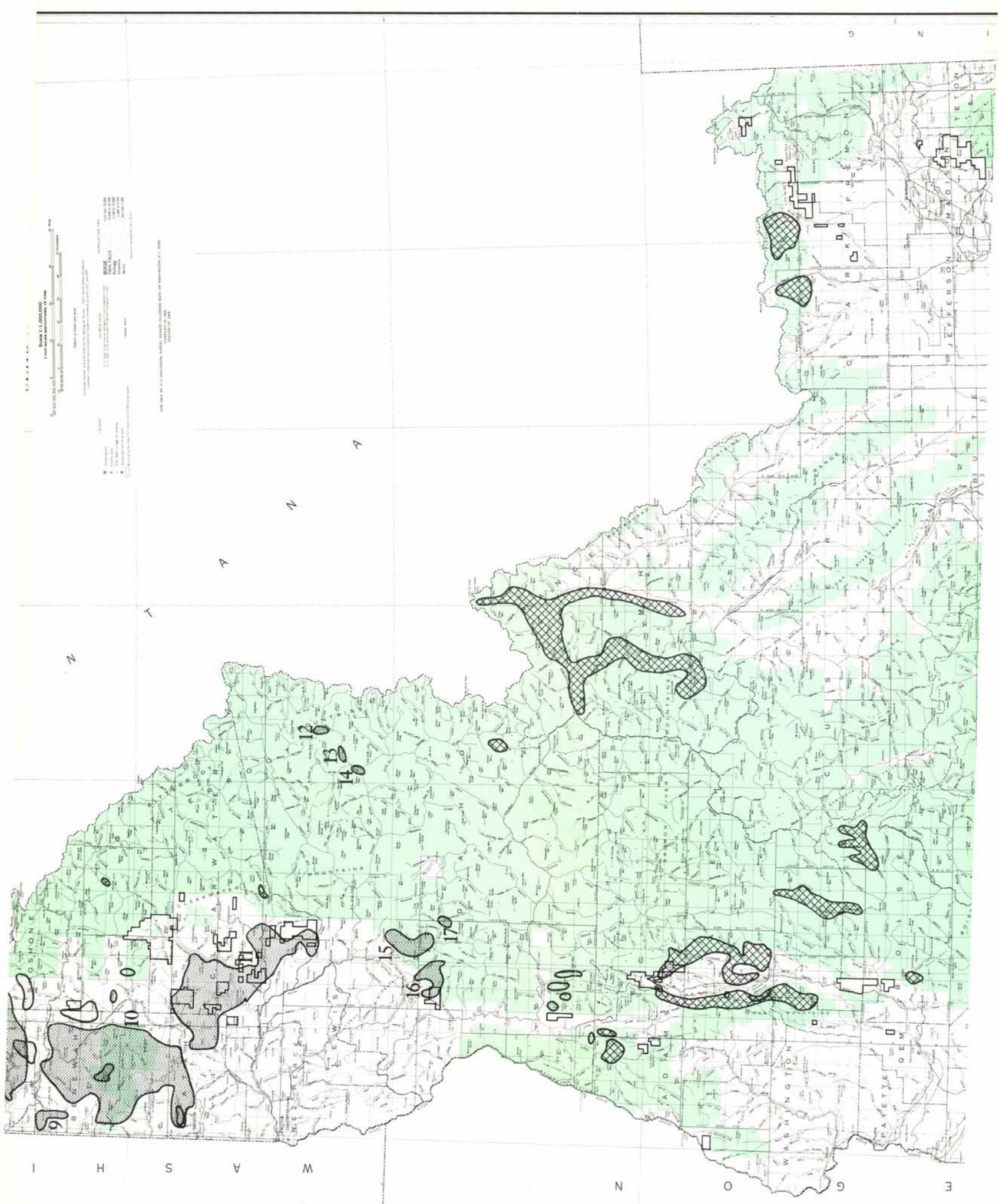
UNITED STATES  
DEPARTMENT OF THE INTERIOR  
GEOLOGICAL SURVEY  
STATE OF IDAHO

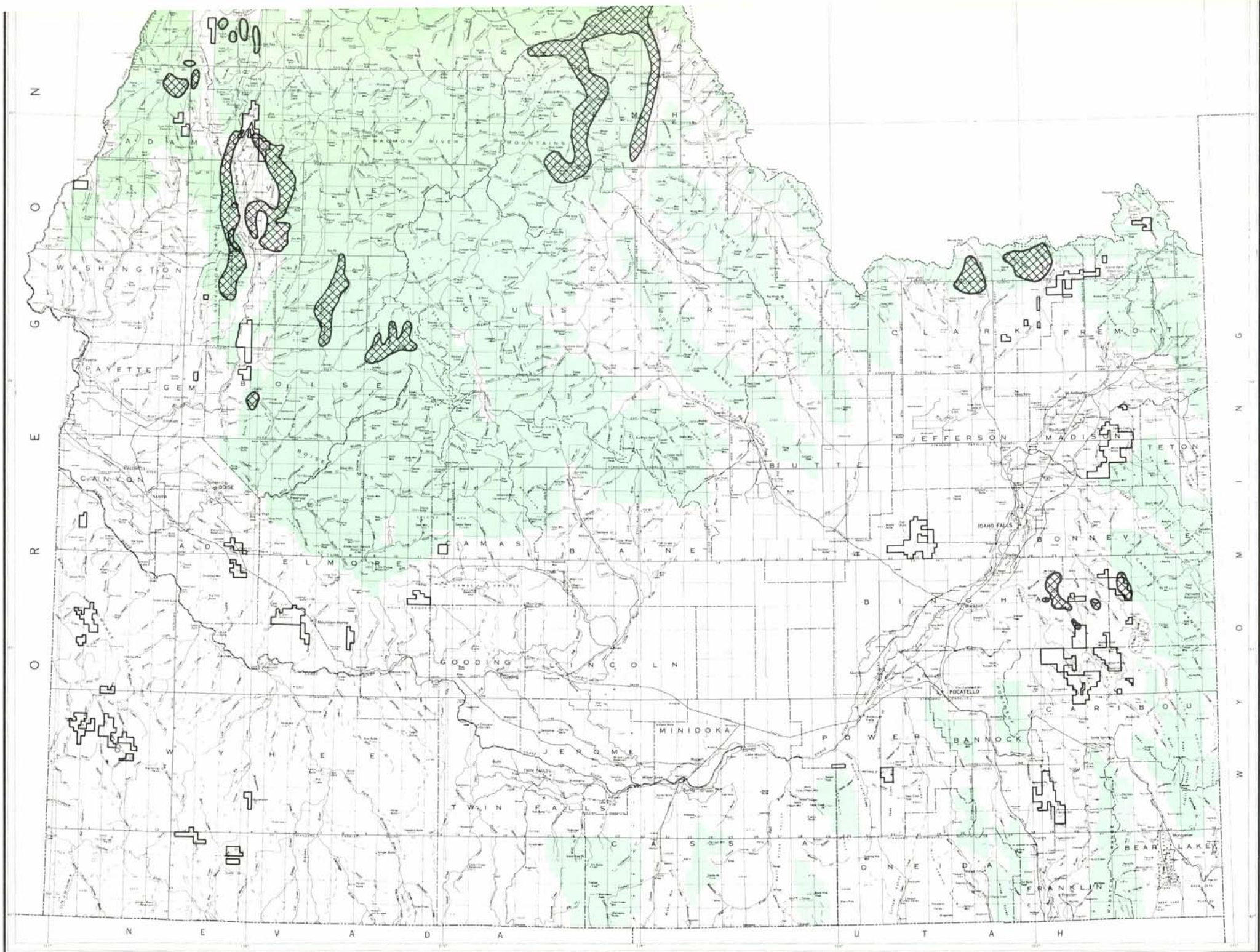


POPULATION DATA	
BOISE	100,000
TWIN FALLS	25,000
PRICKE	15,000
IDAHO	1,000,000
POPULATION	1,000,000

FOR SALE BY U.S. GEOLOGICAL SURVEY, GENERAL COLLECTOR, ROOM 1010, NATIONAL CENTER, RESTON, VA 20192

U.S. GEOLOGICAL SURVEY  
 WATER RESOURCES DIVISION  
 GROUND-WATER INVESTIGATION  
 MAP OF THE  
 SAGE FLATS  
 NEAR  
 BENTON, MISSOURI  
 1964  
 BY  
 R. W. HARRIS  
 AND  
 J. W. HARRIS  
 U.S. GEOLOGICAL SURVEY  
 WATER RESOURCES DIVISION  
 GROUND-WATER INVESTIGATION  
 MAP OF THE  
 SAGE FLATS  
 NEAR  
 BENTON, MISSOURI  
 1964  
 BY  
 R. W. HARRIS  
 AND  
 J. W. HARRIS





## Forest Insect and Disease Common/Scientific Names

### INSECT NAMES

#### Common Name

Douglas-fir beetle  
Douglas-fir tussock moth  
Fir engraver  
Gypsy moth  
Larch casebearer  
Mountain pine beetle  
New budworm  
Pine engraver  
Western balsam bark beetle  
Western pine beetle  
Western pine shoot borer  
Western spruce budworm

#### Scientific Name

*Dendroctonus pseudotsugae* Hopkins  
*Orgyia pseudotsugata* McDunnough  
*Scolytus ventralis* LeConte  
*Lymantria dispar* (Linnaeus)  
*Coleophora laricella* (Hübner)  
*Dendroctonus ponderosae* Hopkins  
*Argyrotaenia* sp. near *gogana* (Kearfott)  
*Ips pini* (Say)  
*Dryocoetes confusus* Swaine  
*Dendroctonus brevicomis* LeConte  
*Eucosma sonomana* Kearfott  
*Choristoneura occidentalis* Freeman

### DISEASE NAMES

Atropellis canker

*Atropellis piniphila* (Weir)  
Lohm. & Cash

Aspen leaf spot

*Marssonia* sp.

Christmas tree blight

*Rhabdocline pseudotsugae* Syd.

Douglas-fir needle cast

*Rhabdocline* sp.

Dwarf mistletoes

*Arceuthobium* sp.

Elytroderma ("Ely") needle cast

*Elytroderma deformans* (Weir) Dark.

Greymold blight

*Botrytis cinerea* Pers, ex Fr.

Ink spot

*Ciborina* sp.

Larch needle cast

*Hypodermella laricis* Tub.

Leaf rust

*Melampsora* sp.

Leaf spot

*Marssonia* sp.

Lodgepole pine needle cast

*Lophodermella concolor*  
(Dern.) Darker

Meria needle cast

*Meria laricis* Vuill.

Needle rust

*Melampsora* sp.

Rhabdocline needle cast

*Coleosporium* sp.

Sirococcus tip blight

*Rhabdocline* sp.

Western gall rust

*Sirococcus strobilinus* Preuss.

White pine blister rust

*Endocronartium harknesii*  
(Moore) Y. Hiratsuka  
*Cronartium ribicola* Fisch.





Idaho  
Department  
of Lands  
USDA Forest  
Service  
Northern and  
Intermountain  
Regions