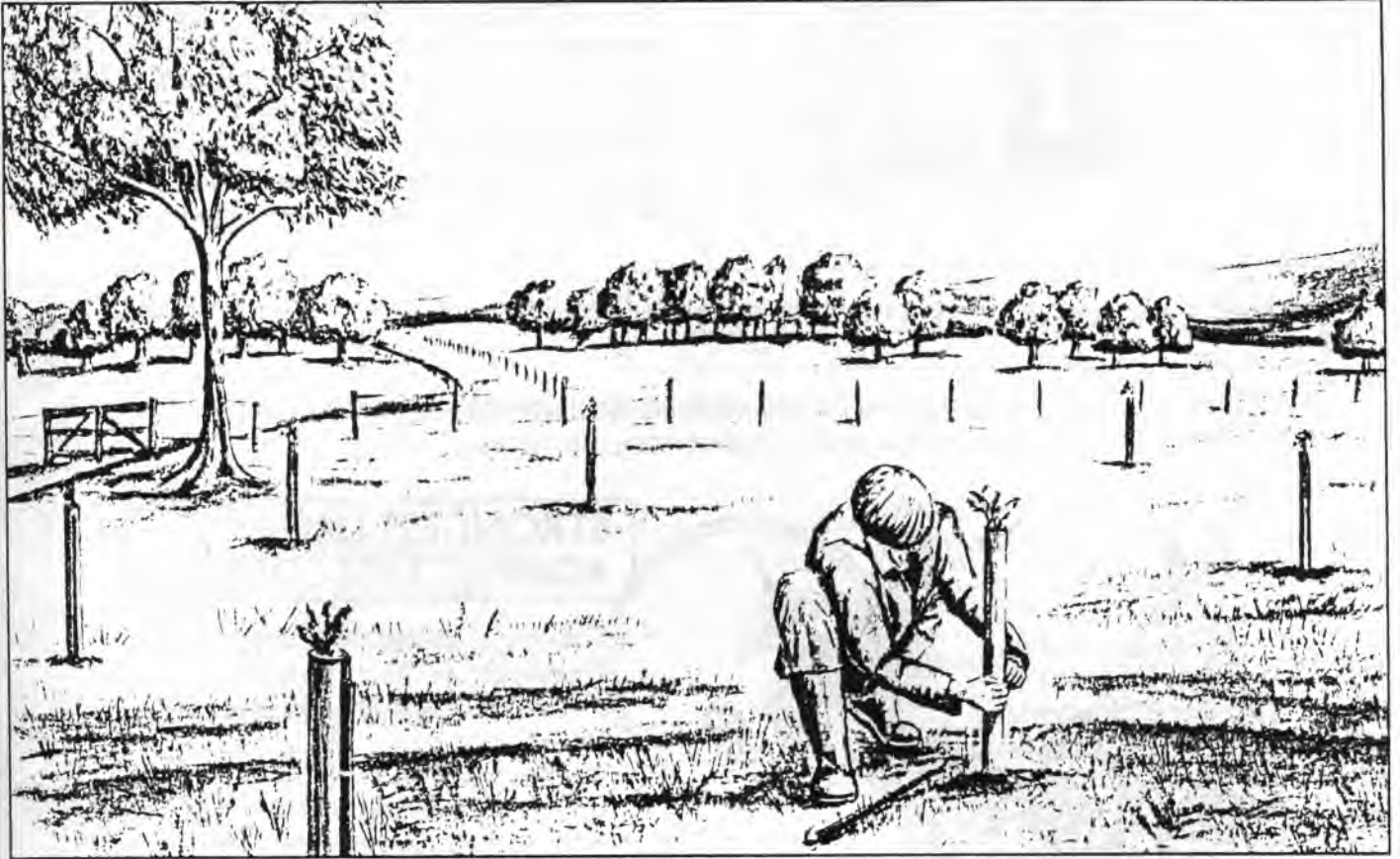




# tubex®



The first twin-wall  
treeshelter with stake recess,  
compact stacking, no damaging  
wires, no splitting and no sharp  
rim to harm bark or shoots.

## SCIENCE AND ENGINEERING COMBINE TO MAKE THE PERFECT TREESHELTER



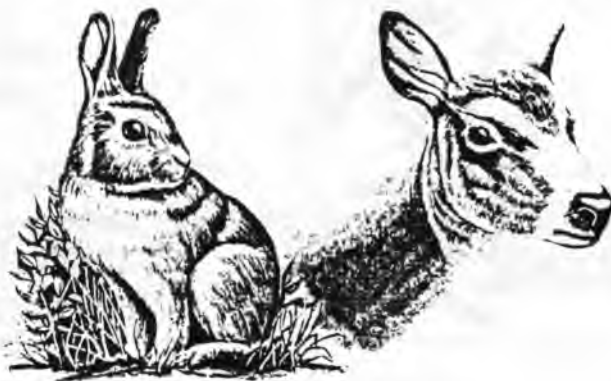
The Tubex Treeshelter is the remarkable result of scientific research and industrial expertise. In designing this treeshelter, Tubex has sought Forestry Commission Research Division advice on every aspect, in order to be best for both tree care and growers' needs. It is the first treeshelter that is purpose-built to all current recommendations.

Since the Forestry Commission's first experiments in 1979, the treeshelter has proved to be outstandingly beneficial to the growth and survival of young trees, as well as being extremely helpful to growers in terms of ease of erection, weed control and aftercare.

Now virtually all design problems have been eliminated as the Tubex Treeshelter introduces a new and even more promising phase in treeplanting.

## TIME SAVING AND EASIER TO USE

With its unique pre-formed stake recess and weatherproof ratchet-locking nylon strap, the Tubex Treeshelter is a simple operation. It saves many man hours.



## STRONGEST DEFENCE AGAINST TREE LOSSES

The unique curved rim of the Tubex Treeshelter won't cut into bark or shoots. There is no need for an extra anti-abrasion device. The weatherproof nylon straps hold the stake firmly into the stake recess and won't embed themselves into the growing tree, as wires can.

## WEED CONTROL IS FASTER AND SAFER

As young trees are completely protected from chemical spray, weed control can be carried out at top speed. The importance of weed control has been stressed frequently in the Forestry Commission Research Notes, as weeds compete vigorously with trees for moisture and nourishment. Furthermore, Tubex makes trees easy to find, even when they are small and can be lost amongst weeds. This is not only a benefit to the grower and the weed control worker, but to the inspector if grants have been applied for.



## TUBEX TREESHELTER STACKS COMPACTLY

Sold in sets of four tubes nested together as one (minimum diameter 80mm) Tubex can be carried onto site in *four times the quantity*. This means more space saving in vans or trucks. The recommended length of the tubes is 1.2 metres, but any length can be supplied, priced pro rata.



Four  
Tubex  
in one

## TUBEX TREESHELTER. A REVOLUTIONARY NEW DESIGN

This unique plastic twin-wall extrusion has been designed and manufactured with the most advanced industrial and technological expertise. The material has been formulated for UV degradation between a

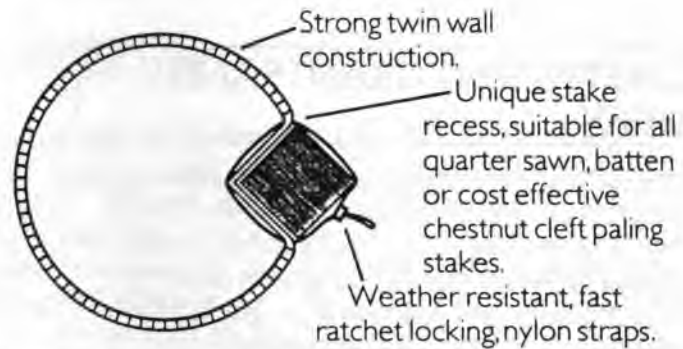
period of 5 to 7 years. Its twin wall construction creates a "greenhouse" effect to promote faster growth. In fact, every aspect of the Tubex Treeshelter has been carefully considered in terms of real benefit to trees and growers.

Suitable for all trees. *Note unique stake recess.*

Anti abrasion rim won't harm bark or shoots.

A unique extruded twin wall tube, not a boxed sheet which can split at corners from enforced tension.

Ratchet-locking nylon straps hold stake firmly into recess. Won't embed themselves into tree, as wires can.



Strong twin wall construction.

Unique stake recess, suitable for all quarter sawn, batten or cost effective chestnut cleft paling stakes.

Weather resistant, fast ratchet locking, nylon straps.

## FORESTERS, LOCAL AUTHORITIES FARMERS, ESTATE MANAGERS

**For foresters** Tubex Treeshelters assure faster, safer growth over the important first 5 to 7 years. They eliminate animal damage, substantially reduce aftercare and also make for faster, easier erection.

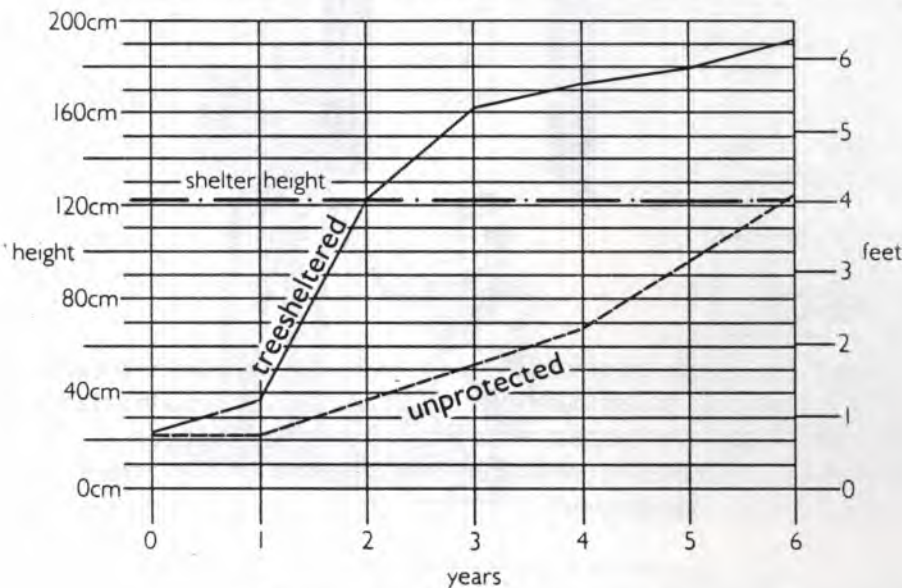
**For local authorities** Tubex Treeshelters produce a far higher survival rate, even with problem sites. Rapid growth makes for a faster and more robust display. Tubex Treeshelters are available in all colours.

**For farmers** Tubex Treeshelters mean minimum maintenance, even in critical early years. Weeding is more efficient. Animal damage reduces to nil. Survival rate can double.

**For estate managers** Tubex Treeshelters produce more certainty of survival, far less maintenance and easy weeding, saving many man hours – very important if you are working with a reduced staff.



## TREESHELTER GROWTH COMPARISON



## INCREASED HEIGHT

Growth height can be *five times over normal* in the first two years with treeshelters. This growth can reduce the period of weed control because the height of the tree is rapidly above weeds and able to compete with weeds more successfully.

**GROWTH TIME TO 120 cm**  
 unprotected 6 years  
 treesheltered 2 years

## GOVERNMENT GRANTS AND TUBEX

There are many grants for planting trees, including the new October 1985 Broadleaved Woodland Grant Scheme. Tubex Treeshelters make planting far easier and faster, as well as making young trees easier for inspectors to find and examine when grants have been applied for. Tubex also demonstrates that you are giving the best possible care to your trees.

It is recommended that young trees are not planted in lines, and should be spaced approximately 10 feet apart.

Grants are available from: The Forestry Commission at local conservation offices, The Countryside Commission Headquarters in Cheltenham, The Countryside Commission for Scotland at Red Gorton, Perth, and local authorities.

## TUBEX. PLASTIC EXTRUSION TECHNOLOGY FOR INDUSTRY

Tubex has an international reputation for design, research, development and production of extruded plastic components. Our concepts have solved problems in engineering, telecommunications, catering,

domestic appliances, pyrotechnics and many other areas. Tubex are sole suppliers to major companies worldwide, in all types of extrusions including twin wall tube in various types of materials.



**THE MOST IMPORTANT NEW DEVELOPMENT IN TREESHelters**

Tubex Limited, Tannery House, Tannery Lane,  
 Send, Woking, Surrey, GU23 7HB.  
 Telephone: GUILDFORD (0483) 225434.