

United States  
Department of  
Agriculture  
**Forest Service**



Volume 32 • Issue 1



# Forest Nursery Notes

---

## Winter 2012







**Please send address changes to  
Rae Watson. You may use the  
Literature Order Form at the end of the  
New Nursery Literature section.**

You can now subscribe to FNN or update your listing on  
the Reforestation, Nurseries, and Genetic Resources website:  
**<http://www.rngr.net/publications/subscribe>**

---

*This international technology transfer service  
is printed by the U.S. Department of Agriculture,  
Forest Service, Natural Resources Conservation Service,  
National Agroforestry Center (Lincoln, Nebraska),  
with funding from the Forest Service,  
State and Private Forestry, through the Center for  
Reforestation, Nurseries, and Genetics Resources.*

## Forest Nursery Notes Team

### **R. Kasten Dumroese, Editor-In-Chief**

USDA Forest Service  
Rocky Mountain Research Station  
1221 S. Main Street  
Moscow, ID 83843-4211  
TEL: 208.883.2324  
FAX: 208.883.2318  
E-Mail: kdumroese@fs.fed.us

### **Tom D. Landis, Lead Author & Editor**

Forest Nursery Consultant  
3248 Sycamore Way  
Medford, OR 97504-9005  
TEL: 541.210.8108  
FAX: 541.858.6110  
E-Mail: nurseries@aol.com

### **Diane L. Haase, Author**

USDA Forest Service  
PO Box 3623  
Portland, OR 97208  
TEL: 503.808.2349  
FAX: 503.808.2339  
E-Mail: dlhaase@fs.fed.us

### **Rae Watson, Requests & Mailing List**

Dorena Genetic Resource Center  
34963 Shoreview Drive  
Cottage Grove, OR 97424  
TEL: 541.767.5717  
FAX: 541.858.6110  
E-Mail: rewatson@fs.fed.us

### **Laura Hutchinson, Library Services**

USDA Forest Service  
North Central Research Station  
1992 Folwell Avenue  
St. Paul, MN 55108  
TEL: 651.649.5272  
E-Mail: lhutchinson@fs.fed.us

---

The U.S. Department of Agriculture (USDA) prohibits discrimination in all its programs and activities on the basis of race, color, national origin, age, disability, and where applicable, sex, marital status, familial status, parental status, religion, sexual orientation, genetic information, political beliefs, reprisal, or because all or part of an individual's income is derived from any public assistance program. (Not all prohibited bases apply to all programs.) Persons with disabilities who require alternative means for communication of program information (Braille, large print, audiotape, etc.) should contact USDA's TARGET Center at (202) 720-2600 (voice and TDD). To file a complaint of discrimination, write USDA, Director, Office of Civil Rights, 1400 Independence Avenue, S.W., Washington, D.C. 20250-9410, or call (800) 795-3272 (voice) or (202)720-6382 (TDD). USDA is an equal opportunity provider and employer.

## Nursery Meetings

*Note: Because FNN is only printed twice a year, the following information is necessarily dated. For the most up-to-date information on meetings about nurseries, reforestation, and restoration, visit the RNGR Website: [www.rngr.net](http://www.rngr.net)*

The **17th Wildland Shrub Symposium** will be held **May 22 to 24, 2012** at the Las Cruces Convention Center in Las Cruces, NM. This year's theme will be Humans in Changing Landscapes and the program will include plenary sessions, oral and poster sessions, and field tours. You can register on-line or just get more information at:

Website:

<http://jornada.nmsu.edu/wildland-shrub-symposium>

The annual meeting of the **Westside Container Grower's** will be hosted by the Washington State DNR Webster Nursery in **June, 2012**. The exact date has not been determined and the agenda is still being developed, but if you'd like more information contact:

**Diane L. Haase**

Western Nursery Specialist • USDA Forest Service  
333 SW First Ave • Portland, OR 97208  
TEL: 503.808.2349 • FAX: 503.808.2339  
E-mail: [dlhaase@fs.fed.us](mailto:dlhaase@fs.fed.us)

This year's **Southern Forest Nursery Association** meeting will be held on **July 16 to 19, 2012** at the Sheraton Read House in Chattanooga, TN. The meeting will consist of technical presentations including one of the McMinnville, TN nursery industry. Nursery tours will visit the Native Forest Nursery in Chatsworth, GA as well as the East Tennessee Nursery, which is operated by the State of Tennessee in Delano. Chattanooga is known as Tennessee's Scenic City, and offers many options for vacations. The local contact is:

**Paul Ensminger**

Nursery Manager • Native Forest Nursery  
11306 Highway 411 South • Chatsworth, GA 30705  
TEL: 706.483.-3397 • FAX: 706.334.2272  
E-mail: [Paul@nativeforestnursery.com](mailto:Paul@nativeforestnursery.com)



This coming September, a joint meeting of the **Intertribal Nursery Council**, the **Western Forestry and Conservation Nursery Association**, and the **Intermountain Container Seedling Growers' Association** will be held from September 11 to 13, 2012 in Bend, OR. Our host will be the USDA Forest Service, Bend Seed Extractory with the appropriate theme of Seeds. For the latest information, contact:

**Diane L. Haase**

Western Nursery Specialist • USDA Forest Service  
333 SW First Ave • Portland, OR 97208  
TEL: 503.808.2349 • FAX: 503.808.2339  
E-mail: [dlhaase@fs.fed.us](mailto:dlhaase@fs.fed.us)

The **Western Regional meeting of the International Plant Propagators' Society** meeting will be **September 19 to 22** at the Four Points Sheraton in Ventura, CA. For the latest information, go to the IPPS website (<http://www.ippswr.org/>), or contact Lee Dempsey:

E-mail: [ippswrlee@sbcglobal.net](mailto:ippswrlee@sbcglobal.net)

On **November 28 to 29, 2012**, a conference on the **Nutrition of Seedlings and Young Forests** will be held in Portland, OR. Exact details are still being developed and this meeting will possibly be sponsored by the International Union of Forest Research Organizations (IUFRO). **Diane Haase** is the meeting coordinator and can be reached at:

USDA Forest Service  
333 SW First Ave • Portland, OR 97208  
TEL: 503.808.2349 • FAX: 503.808.2339  
E-mail: [dlhaase@fs.fed.us](mailto:dlhaase@fs.fed.us)

## Lammas Shoots in Nurseries and Plantations

by Thomas D. Landis

Lammas shoots are shoots that resume growth, or “flush”, after budset in some woody temperate zone plants during the late summer. The name refers to Lammas day (August 1), which is the Celtic harvest festival (Wikipedia 2012a). This type of shoot growth is also known as second flushing (Kohnmann and Johnsen 1997), or summer shoots (Rikala 1992). Lammas growth was first documented by Theophrastus, a Greek contemporary of Aristotle who is considered to be the father of botany (Roth and Newton 1996).

Lammas growth is particularly relevant in nurseries and reforestation because it is most commonly observed on young plants under managed conditions, such as nurseries, plantations, provenance trials, and Christmas tree farms. In fact, one of the most extensive surveys on lammas growth was conducted because of the high incidence of these shoots in Douglas-fir (*Pseudotsuga menziesii*) plantations on the University of British Columbia (UBC) research forest (Walters and Soos 1961). They noted that seedlings of the same genetic source had a higher percentage of lammas shoots in the UBC forest nursery than in outplantings and, in these plantations, the occurrence of lammas shoots increased with site index. Curiously, seedlings with lammas shoots were not found in natural forest stands.

Concern about adverse effects of lammas growth in commercial forest plantations and genetic trials was considerable in the 1930s to 1970s. For example, a *Journal of Forestry* article (Carvell 1956) stated:

“Unless branches and double tops originating from lammas growth are removed, repeated formation of summer shoots . . . could eventually deform a sufficient number of stems to eliminate all possibility of future saw timber production from these plantations”.

This concern seems to have tempered somewhat since then. After their survey of lammas growth in Douglas-fir plantations, Walters and Soos (1961) concluded that although common, lammas shoots usually only have a temporary influence on tree form. Likewise, an analysis of stem deformation in Scots pine (*Pinus sylvestris*) plantations found that trees with lammas shoots seemed to outgrow the apparent distortions and terminal forking (West and Rogers 1965). Other published

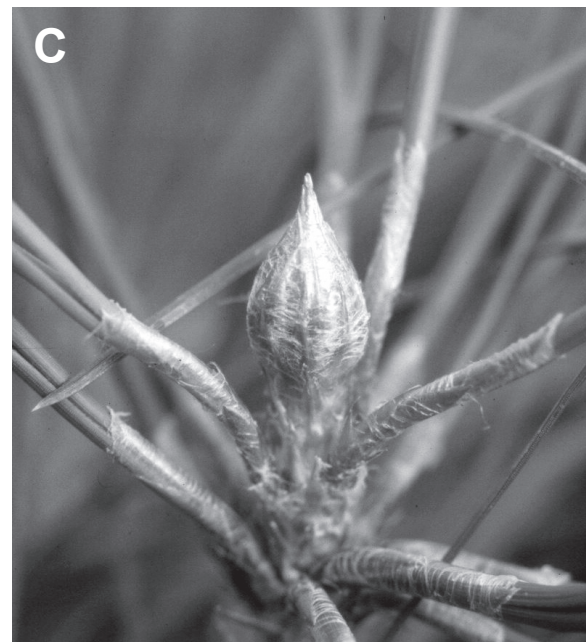
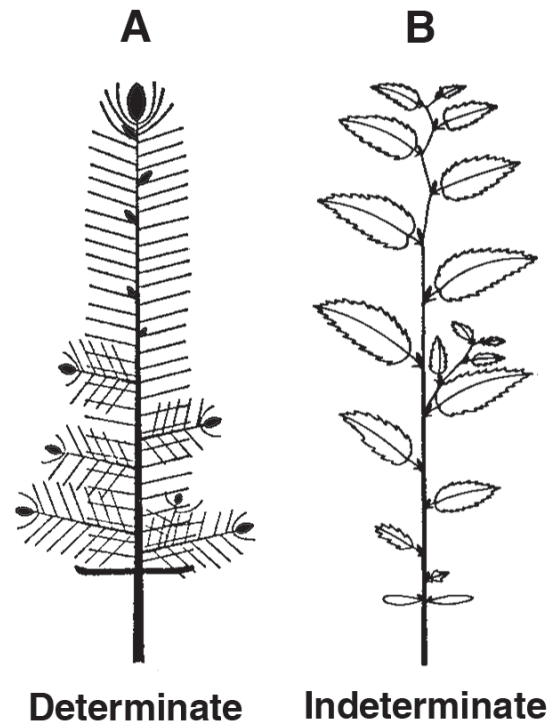


Figure 1 - Woody plants with determinate growth form firm buds (A), whereas those with indeterminate growth do not (B). Firm buds (C) have traditionally been a visible indication of dormancy, and therefore seedling quality.

reports conclude that lammas growth in plantations may actually be an asset. For example, lammas growth has been considered desirable when selecting for fast growth in tree improvement plantations. Lammas growth in genetically improved Sitka spruce (*Picea sitchensis*) plantations accounted for an average of 22% more height growth (Mboyi and Lee 1999). Lammas growth was also deemed beneficial in Douglas-fir plantations along the Pacific coast where deer browse is a problem (Roth and Newton 1996).

So, let's take a good luck at the phenomenon of lammas shoots and how they might affect nursery management and seedling quality. Before we can proceed however, we need to review some basic botany about how the shoots of woody plants grow. Two general types of shoot growth are recognized (Kozłowski 1971; Wikipedia 2012b).

**1. Determinate** - Woody plants with a determinate growth habit exhibit a single growth flush in the spring from the elongation of pre-formed stem units in a dormant bud (Figure 1A&C). Species with determinate stem growth include many commercial conifers including pines and spruces, but also some hardwood species.

**2. Indeterminate** - With the indeterminate growth habit, the shoots of woody plants expand at regular intervals during the growing season and may or may not originate from a dormant bud. The shoots of some species, such as juniper (*Juniperus* spp.) or western redcedar (*Thuja plicata*), never form a dormant bud at the end of the growing season when shoot growth stops due to cold weather and short photoperiod (Figure 1B). In other species, the shoot beyond the last lateral bud dies back due to frost, and then that lateral bud acts as a terminal bud for the following season's growth.

Many scientists define lammas growth as only occurring from the terminal bud (Figure 2A). Other related terms include syllepsis, which has been defined as the flushing of lateral buds in the terminal cluster (Figure 2B), and prolepsis, the flushing of new buds from the lateral meristem after terminal budset. In one study, 73% of the second flushing came from lateral buds, 22% from terminal and lateral buds, and only 5% strictly from terminal buds (Rudolph 1964). I haven't taken any actual measurements but I have observed that container plants grown closely together in blocks tend to flush primarily from terminal buds; conversely, I have seen more flushing of lateral buds in more widely-spaced bareroot stock, especially in pines. For this discussion, however, we will define lammas as any foliar growth that occurs after initial budset.



Figure 2 - Although some distinguish between growth flushes of the terminal (A) and lateral buds (B), we will consider any secondary flushing as lammas growth.

Another important distinction is that lammas growth is a juvenile trait because it rarely occurs in plants more than 10 to 15 years old (Adams and Bastien 1994).

## Genetic and Environmental Factors Affecting Lammas Growth

Not all woody plants with the determinate growth habit exhibit lammas growth, although it has been documented in many conifers of commercial importance including true firs (*Abies* spp.), spruces (*Picea* spp.), pines (*Pinus* spp.), Douglas-fir and hemlocks (*Tsuga* spp.). Lammas growth also occurs in some broadleaved genera including oaks (*Quercus* spp.), beech (*Fagus* spp.) and maple (*Acer* spp.). Other genetic links have also been noted. Numerous studies (for example, Rudolph 1964) have shown that lammas shoots are much more common with certain seed sources. In a growth trial with Douglas-fir, seedlings from an interior seed source had significantly more lammas growth than those from a coastal source (Kaya and others 1994).

Nurseries and especially greenhouses optimize many environmental factors that can stimulate production of lammas shoots. Scots pine seedlings grown in a greenhouse produced more lammas growth than those grown outside. Of the cultural factors modified by the greenhouse environment, irrigation, fertilization, and carbon dioxide enhancement stimulated lammas growth (Alden 1971). Not surprisingly, the same 4 environmental factors that are used in nurseries to induce budset have been shown to stimulate the formation of lammas shoots (Figure 3A).

**Warm Temperature** - When dormant container seedlings of Japanese red pine (*Pinus densiflora*) were moved from outdoors into a heated greenhouse in mid to late winter, they developed lammas shoots. The earlier the seedlings were exposed to the warmer temperatures, the higher the percentage of plants with lammas growth and the earlier this second flush started (Kushida and others 1999).

**Irrigation** - The cultural practice of reducing irrigation to cause a moderate moisture stress has been used to induce budset in bareroot and container nursery stock. However, several nurseries have noticed that lammas shoots develop when normal irrigation is resumed. In a study with container Scots pine (Alden 1971), a strong relationship was shown between percentage of seedlings with lammas shoots and the moisture content of the growing medium (Figure 3B).

**Fertilization** - Fertilizer applications, especially nitrogen, are one of the most effective ways to stimulate additional shoot growth in bareroot and container nurseries (Landis and van Steenis 2003). Many growers are concerned that excessive fertilization, or fertilizer that is applied in late summer, may cause bud break and the development of lammas shoots. In one study, bareroot Scots pine received 3 top dressing applications of fertilizer containing nitrogen, phosphorus, and potassium and were then monitored for the development of lammas growth. Although lammas shoots were more prevalent in seedlings with higher foliar nitrogen concentration (Figure 3C), this study concluded that merely decreasing fertilizer concentration would not eliminate the occurrence of lammas shoots (Rikala 1992). Another study with Douglas-fir found that fertilization significantly increased the production of lammas shoots and that nitrogen was the nutrient responsible. Ammonium nitrate fertilizer had the greatest stimulating effect of all the fertilizers tested, whereas those containing only phosphorus or potassium had no effect on lammas shoot formation (Walters and Kozak 1967).

Many nursery managers are reluctant to fertilize later in the growing season because of concerns about stimulating lammas shoots. However, a review of late season nitrogen fertilization ("nutrient loading") of conifer seedlings in both bareroot and container nurseries concluded that such fertilization was beneficial as long as foliar nitrogen was kept in the ideal range of 1.5% to 2.5% with a moderate moisture stress to limit budbreak (Dumroese 2003).

**Photoperiod** - Manipulation of photoperiod, especially the timing and duration of blackout treatments, has also been shown to promote lammas growth. For example, when short blackout treatments was applied to Norway spruce (*Picea abies*) early in the summer, the plants were prone to break bud and develop lammas shoots (Kohmann and Johnsen 2007). In subsequent experiments with the same species, this stimulation of lammas growth was reduced by extending the blackout treatment for longer than 2 weeks (Luoranen and others 2009).

## Lammas Shoots and Seedling Quality

Because of the large number of commercial conifers grown in nurseries, the occurrence of lammas growth is a source of serious concern by some managers and

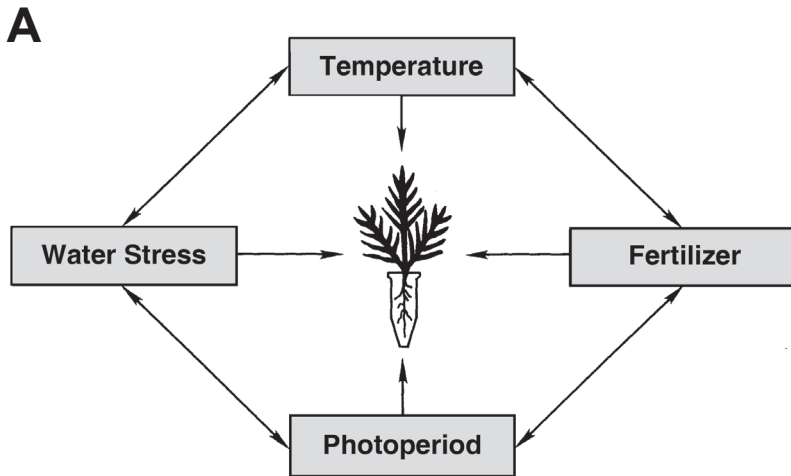
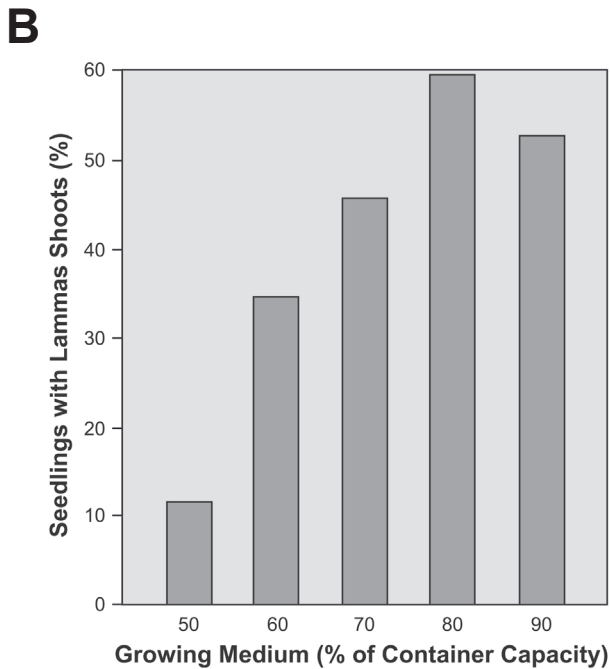
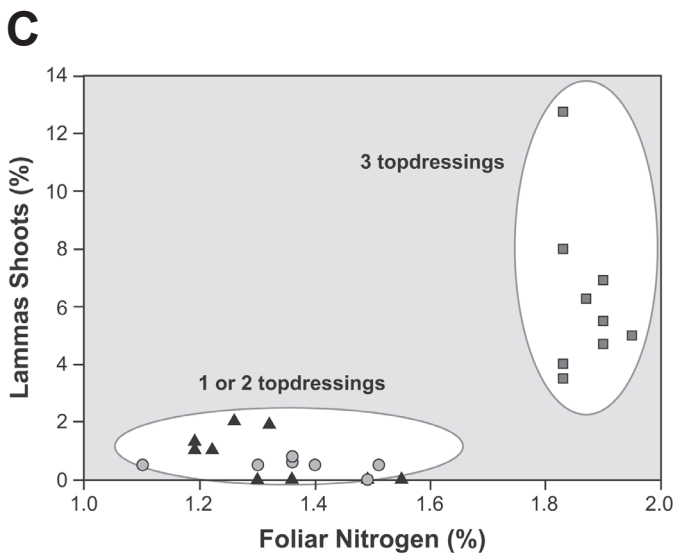


Figure 3 - The same 4 environmental factors used to induce bud dormancy in nurseries have been related to lammas growth (A). Applying irrigation after a period of drought stress stimulates lammas growth (B), as does nitrogen fertilization, especially later in the growing season (C). (A, from Landis and others 1999; B, modified from Alden 1971; C, modified from Rikala 1992).



particularly by nursery customers. Many foresters believe that a firm terminal bud is an indication of seedling quality, and lammas growth is considered undesirable. As we have just discussed, many woody plants with determinate growth habit will develop lammas shoots under a favorable nursery environment. These shoots may or may not develop a bud by the end of the growing season and the concern is that these plants are not dormant. Because the new growth occurs late in the growing season, seedlings with lammas growth are slower to develop cold hardiness and may be more susceptible to early fall frosts. I'm not aware of any published research that actually tested the dormancy or cold hardiness of plants with lammas growth, but these tests wouldn't be difficult and would provide some needed information. In outplanting trials with Sitka spruce, no evidence was found to suggest that lammas growth suffered increased frost damage (Mboyi and Lee 1999). A detailed study of the causes and effects of lammas growth on Scots pine in Finland determined that seedlings with lammas growth should not be culled (Rikala 1992), and I tend to agree with this conclusion.



Undoubtedly, foresters and other customers will occasionally express concern about nursery stock with lammas shoots, but most studies have found that forking and other growth deformations are temporary and seedlings will outgrow them. When you think of it, the very occurrence of lammas shoots shows that seedlings are well established and capable of rapid growth — a major expression of seedling quality.

Because lammas growth is strongly controlled by environment, nursery managers can at least partially control the development of lammas shoots by careful regulation of irrigation and fertilization, especially late in the growth season. Still, lammas shoots may develop



as a result of late summer rains or after irrigation of transplanted plug+one stock so nurseries should inform and educate their customers about the causes and probable outcome of lammas growth.

## Sources

- Alden T. 1971. Influence of CO<sub>2</sub>, moisture and nutrients on the formation of lammas growth and prolepsis in seedlings of *Pinus silvestris* L. *Studia Forestalia Suecica* 93. 21 p.
- Carvell KL. 1956. Summer shoots cause permanent damage to red pine. *Journal of Forestry* 54: 271.
- Dumroese RK. 2003. Hardening fertilization and nutrient loading of conifer seedlings. In: Riley LE, Dumroese RK, Landis TD, technical coordinators. National Proceedings: Forest and Conservation Nursery Associations—2002. Ogden (UT): USDA Forest Service, Rocky Mountain Research Station. Proceedings RMRS-P-28:31–36.
- Kaya Z, Adams WT, Campbell RK. 1994. Adaptive significance of intermittent shoot growth in Douglas-fir seedlings. *Tree Physiology* 14: 1277-1289.
- Kohmann K, Johnsen O. 2007. Effects of early long-night treatment on diameter and height growth, second flush and frost tolerance in two-year-old *Picea abies* container seedlings. *Scandinavian Journal of Forest Research* 22: 375-383.
- Kushida T, Nakashima A, Nagata H. 1999. Lammas shoot induction in *Pinus densiflora* by heating in spring. *Journal of the Japanese Forestry Society* 81: 57-64.
- Landis TD, van Steenis E. Macronutrients - Nitrogen: Part 1. *Forest Nursery Notes*, Summer 2003. Portland (OR): USDA Forest Service, Cooperative Programs. Publication R6-CP-TP-04-03. 46 p.
- Landis TD, Tinus RW, Barnett JP. 1999. Seedling propagation, Volume 6, *The Container Tree Nursery Manual*. Washington (DC): USDA Forest Service. Agriculture Handbook 674. 167 p.
- Luoranen J, Konttinen K, Rikala R. 2009. Frost hardening and risk of a second flush in Norway spruce seedlings after an early-season short-day treatment. *Silva Fennica* 43: 235-247.
- Mboyi WM, Lee SJ. 1999. Incidence of autumn frost damage and lammas growth in a 4-year-old clonal trial of Sitka spruce (*Picea sitchensis*) in Britain. *Forestry* 72: 135-146.
- Rikala R. 1992. Effect of nursery fertilization on incidence of summer shoots and field performance of Scots pine seedlings. *Folia Forestalia* 794. 19 p.
- Roth BE, Newton M. 1996. Role of lammas growth in recovery of Douglas-fir seedlings from deer browsing, as influenced by weed control, fertilization, and seed source. *Canadian Journal of Forest Research* 26:936-944.
- Rudolph TD. 1964. Lammas growth and prolepsis in jack pine in the Lake States. *Forest Science Monograph* 6. 70 p.
- Troeng E, Ackzell L. 1990. Effects of carbon dioxide enrichment on bud formation and growth of coniferous seedlings. *Acta Horticulturae* 268: 179-189.
- Walters J, Kozak A. 1967. The effect of chemical fertilization on the formation of lammas shoots in Douglas-fir seedlings. Vancouver (BC): University of British Columbia, Faculty of Forestry. Research Paper 76. 8 p.
- Walters J, Soos J. 1961. Some observations on the relationships of lammas shoots to the form and growth of Douglas-fir seedlings. Vancouver (BC): University of British Columbia, Faculty of Forestry. Research Paper 40. 8 p.
- West RF, Rogers R. 1965. The effect of lammas shoot growth on the stem form of young scotch pine. Proceedings of the 17th Northeastern Forest Tree Improvement Conference. New Brunswick (NJ): Paper of the Journal Series, New Jersey Agricultural Experiment Station: 14-20.
- Wikipedia 2012a. Lammas growth. URL: [http://en.wikipedia.org/wiki/Lammas\\_growth](http://en.wikipedia.org/wiki/Lammas_growth) (accessed 28 Jan 2012).
- Wikipedia 2012b. Defining determinate, semi-determinate, and indeterminate growth habits. URL: <http://www.forestencyclopedia.net/p/p2227> (accessed 28 Jan 2012).

# Seed Treatments for Container Seedling Production at the University of Idaho

by Olga A. Kildisheva, Donald J. Regan, and Anthony S. Davis

## Introduction

Propagation from seeds is the most common method of plant production in forest and conservation nurseries (Landis and others 1999). Seed propagation is particularly widespread because this technique is relatively simple, inexpensive, and preserves genetic diversity in the crop – an important consideration in maintaining biodiversity and species persistence following outplanting. Other benefits of seed propagation include ease of shipping and long-term storage, especially for seeds with hard seed coats.

This article documents the techniques used to successfully propagate a wide variety of plants native to Idaho at the University of Idaho Franklin H. Pitkin Forest Nursery (UIPFN). Complete propagation protocols are being developed and will be posted on the Native Plant Network ([www.nativeplantnetwork.org](http://www.nativeplantnetwork.org)).

## Disinfecting Seeds

Woody plant seeds, especially those with rough seed coats, harbor fungal and bacterial pathogens that can cause major problems during the seed treatment and germination process. This problem is acute for species that require several months of stratification; such seeds should be disinfected as a first step. One of the easiest and most effective treatments is a running water rinse (Figure 1) where seeds are placed under running water for 24 to 48 hours (James and Genz 1981). In addition to gently washing away pathogens, this treatment encourages full seed hydration, which is the first step in the germination process.

In cases when a water rinse is not sufficient, a solution of commercially available bleach and water can be used. Care should be taken with thin coated seeds, such as red alder (*Alnus rubra*), which can be damaged by prolonged exposure to concentrated bleach solutions. The most effective concentration (v:v) is species-dependent and can range from 1:8 to 2:3 (bleach:water) (Luna and others 2009). At the UIPFN, a 1:5 concentration is used to disinfect species particularly susceptible to fungal contamination, such as lodgepole, limber, and western white pines (*Pinus contorta*, *P. flexilis*, *P. monticola*, *P. ponderosa*) and Douglas-fir (*Pseudotsuga menziesii*).



Figure 1 – A running water rinse accomplishes 2 prerequisites for effective seed treatments: cleansing the seedcoat and imbibing the seed with water.

Seeds can be placed in sacks of tulle or mesh bags, submerged in a bleach solution, and swirled around in order to allow bleach to coat seeds evenly. After several minutes, seeds are thoroughly rinsed in running water. In extreme situations, fungicide can be used to reduce mold development, but should only be done when absolutely necessary due to possible phytotoxicity and health concerns (Finnerty and Hutton 1993).

## Seed Treatment by Dormancy Type

Seed dormancy is an adaptation that ensures seeds will germinate only when environmental conditions are favorable for survival. Some seeds require no treatment and will germinate immediately in the proper environment whereas most native plants have seeds with some type of dormancy. Determining the type and degree of seed dormancy is critical to successful propagation, and keys are available to determine which type of dormancy is exhibited by seeds (Luna and others 2009).

## External Dormancy

The term external dormancy is synonymous with physical dormancy and is caused by the presence of a lignified layer of cells in the seed coat that prevents a dormant seed from taking up water and gases. However, once the seed is made permeable it can complete its germination within 2 weeks, if no additional dormancy exists (Baskin and Baskin 1998; Luna and others 2009).

## Scarification

Physical dormancy is alleviated by scarification of the seed coat, which can be done in a number of ways including piercing, filing, nicking, sanding, burning, acid scarification, or wet heat. At the UIPFN, a concentrated solution of sulfuric acid ( $H_2SO_4$ ) is used to treat species with especially thick seed coats or stony endocarps such as black hawthorn (*Crataegus douglasii*), redstem ceanothus (*Ceanothus sanguineus*), and oakleaf sumac (*Rhus trilobata*), with treatment durations ranging from 20 to 45 minutes (Table 1). For this procedure, seeds are placed in a glass container and covered with concentrated sulfuric acid. The seeds are gently stirred and allowed to soak for a predetermined duration of time (dependent on the species, seed size, and seed coat thickness). Sulfuric acid reacts strongly with water, thus it is important to remember to never add acid to water, as it can result in a powerful reaction and cause severe chemical burns. In addition, sulfuric acid can damage the seed embryo; therefore seeds must be closely monitored during the treatment. If working with a new species for which treatment duration is not known, monitoring can be done by removing seeds from the acid bath at regular intervals and cutting them. Once the seeds can be cut easily but maintain a firm embryo they have been sufficiently scarified, at which point all seeds should be removed from the acid. Sulfuric acid can be potentially dangerous to the applicator and requires protective wear (gloves, goggles, and aprons) and must be disposed of properly (Luna and others 2009).

## Internal Dormancy

Seeds with internal dormancy have embryos that are either underdeveloped or exhibit a low growth potential (Baskin and Baskin 1998). A number of different types of internal dormancy exist, but all respond to some combination of specific temperature and moisture treatments.

## Stratification and Warm, Moist Treatment

Stratification can be described as the process that uses high moisture and temperature or a series of temperatures to overcome seed dormancy. According to Luna and others (2009) the term “stratification” refers to cold, moist conditions, while the term “warm, moist treatment” means exactly that. Several native plants require some combination of stratification and warm, moist treatment. Stratification temperatures usually range between 1 and 3 °C (34 to 38 °F), while warm, moist treatment temperatures fall between 18 and 30 °C (65 to 86 °F).

A number of different techniques can be used for stratification and for warm, moist treatment. Seeds can be placed in plastic bags and mixed with a moist medium, such as *Sphagnum* moss, or wet burlap to maintain high humidity. At the UIPFN seeds are placed in nylon tulle, which can be purchased at any fabric store in a variety of mesh sizes. The nylon tulle is tied, labeled, buried in a bucket filled with moist media, and placed in the appropriate temperature conditions (Figure 2). This is a particularly useful technique for species that are transplanted into containers as germinants, such as black hawthorn, red currant (*Ribes sanguineum*), Rocky Mountain juniper (*Juniperus scopulorum*), and several rose species (*Rosa nutkana* and *R. woodsii*) (Table 1). The germinant sowing procedures are well described in Landis and others (1999).



Figure 2 - At the Pitkin Forest Nursery seeds are placed in nylon tulle, which is buried in a bucket filled with moist media and placed in the appropriate temperature conditions for stratification or warm, moist treatment.

Another method, “naked” stratification, involves placing seeds in nylon tulle, which is positioned inside a plastic bag filled with a small amount of water in order to maintain high relative humidity (RH) inside each bag (Figure 3). The nylon tulle containing seeds should not come in contact with the water in the plastic bag. Bags can be tied and hung inside a cooler for the required duration of time. The seeds should be checked frequently to make sure there is no fungal presence and rinsed periodically to cleanse and aerate them. At the UIPFN, this method is used primarily for conifers, but is also suitable for the treatment of some native shrubs and hardwoods (Table 1).



Figure 3 - Naked stratification involves placing seeds in nylon tulle, which positioned inside a plastic bag above a supply of water, in order to maintain high relative humidity (RH) inside each bag. The nylon tulle containing seeds should not come in contact with the water in the plastic bag. Bags can be tied and hung inside a cooler for the required duration of time.

An alternative method involves stratifying seeds once they are in the growing containers. Dormant seeds are sown on the surface of the media and sometimes covered by a thin layer of media or grit that helps maintain constant conditions around the seed. Whether or not seeds are covered depends on their light requirement; for instance seeds of western syringa (*Philadelphus lewisii*)

are stratified uncovered because they require light during germination. Once sown, containers are watered until the medium is brought to field capacity. Finally, the sown containers are placed into a cooler, or stored outside in a protected area during the winter (in areas where appropriate temperature conditions are met). If only a warm, moist treatment is required, seeds can be maintained under a moist cover in a greenhouse. It is important to note that the media moisture level should be maintained during the treatment period, which is of particular importance for warm, moist treatments. In addition, seeds treated in this manner must be protected against rodent predation.

At the UIPFN a number of native shrubs and hardwoods are stratified directly in containers (Table 1). This approach is especially useful for smaller seeds that are harder to transplant or those that are covered with mucilage [for example, serviceberry (*Amelanchier alnifolia*)] that prevents them from being effectively handled during naked or moist media stratification. In addition, container stratification allows for a quick transition from stratification into the greenhouse, thus saving the grower a substantial amount of time in the spring when time is limited. However, this approach requires considerably more area than other stratification methods and is not advisable when space constraints are an issue. To make certain that each container has a viable seed, several seeds are sown in each container and thinned after germination.

Some species require exceptionally humid conditions in order to germinate. For such species the use of a “foghouse” or another high humidity environment may be necessary to promote germination following stratification or warm, moist treatment. Mountain huckleberry (*Vaccinium membranaceum*) is an example of a species with this requirement. Although generally considered to be difficult to propagate, it has been successfully cultivated at the UIPFN. Seeds are sown directly into hydrated Jiffy J2865 (3.1 in<sup>3</sup>) forestry peat pellets (Jiffy Products of America, Inc., Norwalk, OH), placed in corresponding trays, sealed in plastic bags to prevent moisture loss, and then stratified at 1.5 °C (35 °F) for 30 to 45 days. Following stratification, the trays are moved to the foghouse (at 85% RH) and placed on benches with heated-water circulation (21 °C [70 °F]). Germination occurs in 13 to 21 days. After 90 days seedlings are moved into a greenhouse and placed in front of moist cooling pads, where temperatures range between 26.5 °C (80 °F) and 10 °C (50 °F) (Regan and others 2012).

Scientific Name	Common Name	Sulfuric Acid	Gibberellic Acid	Running Water Soak	Warm Treatment	Stratification	Germinant Sowing	Running Water Rinse
<b>Hardwoods</b>								
<i>Alnus incana</i>	Thinleaf Alder	-	-	yes	-	180 d naked	-	yes
<i>Betula occidentalis</i>	Water Birch	-	-	-	-	-	-	-
<i>Betula papyrifera</i>	Paper Birch	-	-	-	-	-	-	-
<i>Cornus sericea</i>	Redosier Dogwood	-	-	yes	-	90 d naked	-	yes
<i>Crataegus douglasii</i>	Black Hawthorn	25 min	-	yes	30 d media	120 d media	yes	-
<i>Prunus virginiana</i>	Chokecherry	-	-	yes	-	140 d container	-	-
<i>Sorbus scopulina</i>	Mountain Ash	-	-	yes	-	150 d container	-	-
<b>Shrubs</b>								
<i>Amelanchier alnifolia</i>	Serviceberry	-	-	yes	-	120 d container	-	-
<i>Ceanothus sanguineus</i>	Redstem Ceanothus	20 min	-	yes	-	60 d naked	-	yes
<i>Dasiphora fruticosa</i>	Shrubby Cinquifol	-	-	yes	-	60 d naked	-	yes
<i>Philadelphus lewisii</i>	Westem Syringa	-	-	yes	-	60 d container	-	-
<i>Physocarpus malvaceus</i>	Ninebark	-	-	yes	-	30 d naked	-	yes
<i>Purshia tridentata</i>	Antelope Bitterbrush	-	-	yes	-	60 d naked	-	yes
<i>Rhamnus purshiana</i>	Cascara	-	-	yes	-	115 d naked	-	yes
<i>Rhus trilobata</i>	Oakleaf Sumac	45 min	-	yes	-	60 d naked	-	yes
<i>Ribes aureum</i>	Golden Currant	-	-	yes	-	60 d container	-	-
<i>Ribes sanguineum</i>	Red Currant	-	-	yes	-	120 d media	yes	-
<i>Rosa nutkana</i>	Nootka Rose	-	-	yes	115 d media	115 d media	yes	-
<i>Rosa woodsii</i>	Woods' Rose	-	-	yes	30 d media	120 d media	yes	-
<i>Salvia dorrii</i>	Desert Purple Sage	-	-	yes	-	-	-	-
<i>Sambucus nigra</i>	Blue Elderberry	-	GA	yes	-	60 d tray	-	-
<i>Vaccinium membranaceum</i>	Mountain Huckleberry	-	-	yes	-	30 d Jiffy tray	-	-
<b>Conifers</b>								
<i>Abies concolor</i>	Concolor Fir	-	-	yes	-	28 d naked	-	yes
<i>Abies grandis</i>	Grand Fir	-	-	yes	-	28 d naked	-	yes
<i>Abies lasiocarpa</i>	Subalpine Fir	-	-	yes	-	28 d naked	-	yes
<i>Juniperus scopulorum</i>	Rocky Mountain Juniper	-	-	yes	120 d media	120 d media	yes	-
<i>Larix occidentalis</i>	Western Larch	-	-	yes	-	28 d naked	-	yes
<i>Picea engelmannii</i>	Engelmann Spruce	-	-	yes	-	28 d naked	-	yes
<i>Picea pungens glauca</i>	Blue Spruce	-	-	yes	-	28 d naked	-	yes
<i>Pinus contorta</i>	Lodgepole Pine	-	-	yes	-	28 d naked	-	yes
<i>Pinus flexilis</i>	Limber Pine	-	-	yes	-	40 d naked	-	yes
<i>Pinus monticola</i>	Western White Pine	-	-	yes	-	120 d naked	-	yes
<i>Pinus ponderosa</i>	Ponderosa Pine	-	-	yes	-	46 d naked	-	yes
<i>Pseudotsuga menziesii</i>	Douglas-fir	-	-	yes	-	28 d naked	-	yes
<i>Thuja plicata</i>	Westem Redcedar	-	-	yes	-	28 d naked	-	yes
<i>Tsuga heterophylla</i>	Western Hemlock	-	-	yes	-	45 d naked	-	yes

All water rinses are 24 hours and occur after stratification; all soaks are 48 hours and occur before stratification or sowing (if no stratification is required).

Table 1. Summary of seed treatment techniques used for native hardwoods, shrubs, and conifer species grown at the University of Idaho Pitkin Forest Nursery (Moscow, ID).

## Gibberellic Acid

Gibberellic acid ( $GA_3$ ) is a naturally occurring growth hormone that is often used to alleviate internal dormancy. It can be used alone or in combination with stratification and is sometimes substituted for a warm, moist treatment (Timson 1966; Pinfield and others 1972; Luna and others 2009).  $GA_3$  acts through increasing the growth potential of the embryo and by overcoming the mechanical constraints that prevent the emergence of the radicle (Hilhorst and Karsen 1992; Leubner-Metzger 2003). This chemical can be readily purchased from horticultural or chemical suppliers; however, the concentration of the effective  $GA_3$  solution is species dependent, typically varying between 100 and 1000 ppm (Luna and others 2009). A treatment solution can be prepared by dissolving  $GA_3$  in distilled water according to the concentration requirement. The UIPFN uses a 346 ppm solution to treat seeds of blue elderberry (*Sambucus nigra* spp. *cerulea*), which is prepared by mixing 51.9 mg of  $GA_3$  with 0.15 L of water.  $GA_3$  solutions can be applied by soaking seeds directly, thoroughly spraying them, or by placing seeds on germination paper saturated with the solution. With this latter technique, following treatment seeds are removed and then planted into growing containers (Figure 4). Because  $GA_3$  is a powerful growth hormone, high concentrations can cause premature germination and poor seedling quality; when working with a new species, always start with dilute concentrations first (Luna and others 2009).

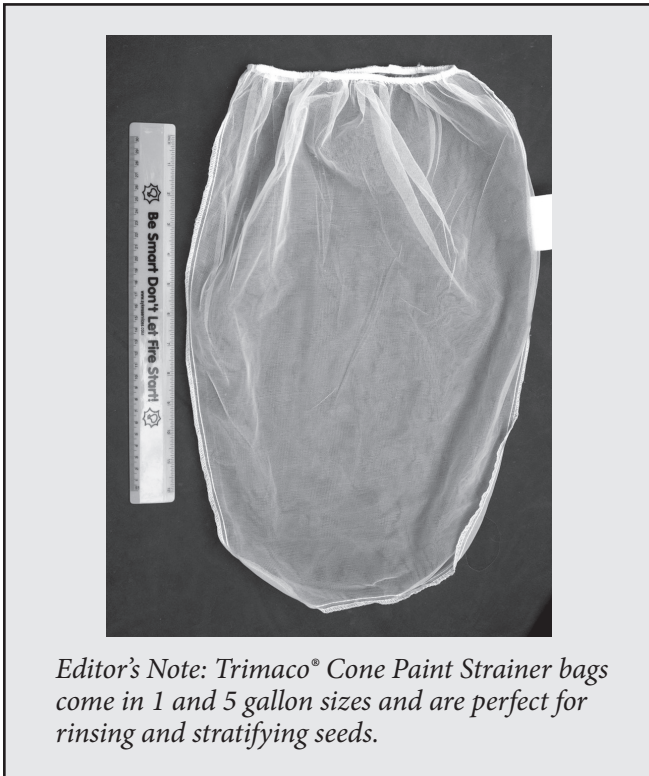


Figure 4 - The  $GA_3$  solution can be applied with a spray bottle. This method requires seeds to be germinated in trays and then planted into growing containers.

## Sowing Techniques in Container Nurseries

### Direct Sowing

Direct sowing is a quick and economical method for sowing seeds because it minimizes handling and labor. It is by far the most common approach, especially for those seeds that require little to no pre-sowing treatment. Furthermore, direct sowing can be mechanized for larger scale operations, further expediting the process (Luna and others 2009). For this approach it is important for growers to have accurate germination information to set optimal sowing rates in order to insure adequate seedling emergence. If such information is not available, small-scale germination tests should be conducted in order to assess the germination rate of a particular seedlot (Luna and others 2009). Procedures for determining the optimal number of seeds necessary to obtain a target number of germinants are described in detail in Chapter 8 of the *Nursery Manual for Native Plants* (Luna and others 2009). However, many native plants have various dormancy requirements and often benefit from germinant sowing.

### Germinant Sowing

Germinant sowing, sometimes referred to as planting "sprouts," is particularly useful for large seeds, seed lots of variable quality, or for those for which no germination test data are available (Landis and Simonich 1984; Finnerty and Hutton 1993). Germinant sowing is primarily used for seeds with internal dormancy that require stratification and/or warm, moist treatment,

such as maples and junipers. The major advantage of this method is that it ensures a live seedling originates from each container (Landis and others 1999). At the UIPFN, this technique is used frequently, especially for seedlings planted into Jiffy forestry pellets.

Seeds that will be sown as germinants are placed in stratification or warm, moist treatment and monitored every few days to gauge germination. Seeds with an emerged radicle are separated out and sown. Larger seeds can be planted by hand, but smaller ones require tweezers, although planting method is subject to preference (Landis and others 1999). For tap-rooted species such as some nut crops, the radicle of the dominant root is sometimes pruned to encourage the establishment of a more fibrous root system. However, the pruned amount should not exceed 3.0 mm (0.12 in) (Emery 1988).

One of the major drawbacks of germinant sowing is the need for precision in germinant placement. The seeds must be sown with the radicle extending downward as inadequately placed seeds will be deformed, brittle, or break when they become larger. Another disadvantage is that sowing may take several weeks or months, resulting in an uneven-aged crop and may not be beneficial when labor is an operational limitation. In order to reduce sowing time, seeds can be germinated and the germinants transplanted into containers. At the UIPFN, this technique is used for black hawthorn, red currant, Rocky Mountain juniper, and several rose species (Table 1). Because these species are stratified in moist media, the entire stratification bucket is moved from the cool into a warm environment (21 °C [70 °F]) and remains there for 3 to 5 days. During this process media moisture levels match those maintained during stratification. Germination is monitored daily. Seeds with an emerged radicle are separated out and sown. The major advantage of this treatment is that it requires little additional effort, but ensures more uniform and timely germination. However, not all species respond well to this technique so some experimentation is needed when working with new species. It is also important to note that sowing may sometimes take several weeks or months, which may not be beneficial when labor is an operational limitation.

## Sources

Baskin CC, Baskin JM. 1998. Seeds: ecology, biogeography, and evolution of dormancy and germination. San Diego (CA): Academic Press.

Emery DE. 1987. Seed propagation of native California plants. Santa Barbara (CA): Santa Barbara Botanic Garden.

Finnerty TL, Hutton KM. 1993. Wood shrub propagation: a comprehensive approach. In: Landis TD, technical coordinator. Proceedings, Western Forest Nursery Association. Fort Collins (CO): USDA Forest Service Rocky Mountain Forest and Range Experiment Station. General Technical Report RM-221: 82-91.

Hilhorst HW, Karssen CM. 1992. Seed dormancy and germination - the role of abscisic acid and gibberellins and the importance of hormone mutants. *Plant Growth Regulation* 11:225-238.

James RL, Genz D. 1981. Ponderosa pine seed treatments: effects on seed germination and disease incidence. Missoula (MT): USDA Forest Service Timber, Cooperative Forestry and Pest Management. Northern Region Report 81-16. 13 p.

Landis TD, Tinus RW, McDonald SE, Barnett JP. 1999. Seedling propagation, Vol. 6, The Container Tree Nursery Manual. Washington (DC): USDA Forest Service, Agricultural Handbook 674. p 35-92.

Landis TD, Simonich EJ. 1984. Producing native plants as container seedlings. In: Murphy PM, compiler. The challenge of producing native plants for the Intermountain Area. Proceedings, Intermountain Nurserymen Association Conference. Ogden (UT): USDA Forest Service, Intermountain Forest and Range Experiment Station. General Technical Report 168. 96 p.

Leubner-Metzger G. 2003. Functions and regulation of beta-1,3-glucanases during seed germination, dormancy release and after-ripening. *Seed Science Research* 13:17-34.

Luna T, Wilkinson K, Dumroese RK. 2009. Seed germination and sowing options. In: Dumroese RK, Luna T, Landis TD, editors. Nursery manual for native plants: A guide for tribal nurseries - Volume 1: Nursery management. Washington (DC): USDA Forest Service. Agriculture Handbook 730. p 133-151.

Pinfield NJ, Stobart AK, and Martin MH. 1972. Control of germination in *Stachys alpina* L. *New Phytologist* 71:99-104.

Regan DJ, Woodruff K, Davis AS. 2012. Propagation protocol for mountain huckleberry (*Vaccinium membranaceum*). *Native Plants Journal* 13(1): 14-18.

Timson J. 1966. Germination of *Polygonum convolvulus* L. *New Phytologist* 65:423-428.

# Problem Solving: A Creative and Systematic Approach

by Thomas D. Landis

We all experience problems in our daily lives and most people develop their own problem solving techniques through personal experience or their professional training. Because every problem is different, however, someone’s “pet” problem solving technique may not be the best or the most efficient. Methods based on trial and error, for example, may be useless in a crisis situation when time is at a premium.

Problems are nothing new to nursery managers. Administrative constraints, site deficiencies, and equipment breakdowns are just a few of the problems that occur daily in tree or native plant nurseries. Good managers realize that problems are a natural part of any operation and must be dealt with directly, quickly, and effectively.

and the weather each year is different, the best way to document daily activities is to have key nursery employees keep a daily log (Figure 1A). For example, the person doing the irrigation and fertilization should write down exactly what they do each day on a established data sheet. Then, if a problem with plant growth is observed, it’s easy to go back and find out exactly what was applied.

Our objective in forest and native plant nurseries is to grow quality plants in a relatively short time frame. Whenever someone asks me to help evaluate a nursery program, the first thing that I ask is to see some growth

## What constitutes a problem?

*“Well, I tell you there’s no problems, only solutions.” — John Lennon*

My favorite definition of a problem is any situation in which there is a difference between “what is” and “what what should be” (Van Gundy 1981). This definition emphasizes the relative nature of all problems. Defining problems always involves value judgments—what is a problem to one person may not be to another. The values or objectives of any organization will at least partially define the nature of its problems.

A complicating factor is that the differences between “what is” and “what should be” are frequently dynamic. In the case of seedling quality, the “what is” aspect changes with the physiological and developmental status of the seedling during the growing season or with short-term changes in weather. The “what should be” aspect of seedling specifications changes from year to year and from customer to customer. Because each crop

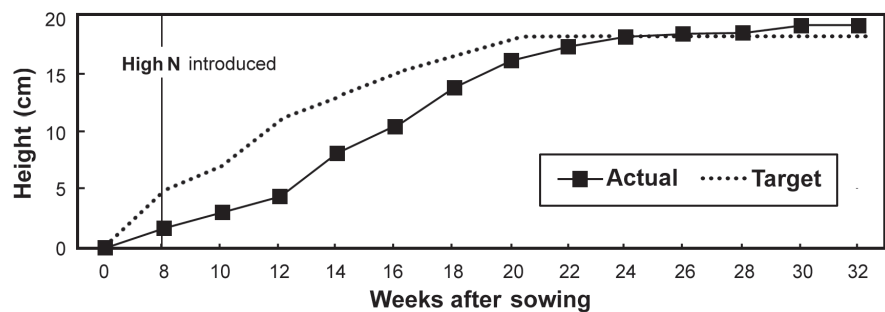
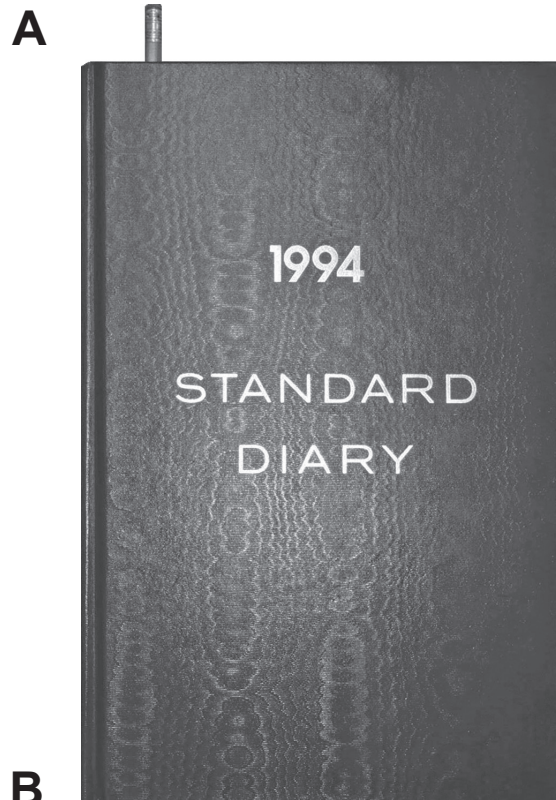


Figure 1 - One of the easiest ways to determine if a problem exists (the difference between “what is” and “what should be”) is keep a daily diary (A), and to develop plant growth curves (B), which are based on past nursery records (Landis 2011).



data. It's difficult to notice and, more importantly, to quantify a nursery problem without good growth records (Figure 1B).

## Traditional Approaches to Problem Solving

Managers must rely on their own experience and analytical skills to solve problems, and numerous techniques have been tried. Before investing a lot of time in problem solving, make sure that a real problem exists—some apparent problems can be resolved by merely taking a closer look at the situation or by readjusting expectations. Traditionally, problems have been solved in several ways.

**The ostrich approach** - These people ignore problems in the hope that they will eventually go away. Some problems do seem to solve themselves, or, if ignored long enough, may be solved for us. More often, however, problems that are ignored become even more serious or spawn a second generation of problems.

**The panacea approach** - This involves applying a “tried and true” solution without regard to its suitability for different problem situations (Van Gundy 1981). The panacea approach is a favorite of experienced managers who may have achieved positive results in the past but who overlook the variable nature of most problems or the advent of new technology.

**The shotgun approach** - People who use the shotgun approach believe that if enough solutions are tried, one of them should surely work (Van Gundy 1981). Many people, when confronted with a problem, feel that it is best to “do something” as quickly as possible; the danger is that some of these haphazard solutions may actually make the problem worse.

## Roadblocks to Creativity

*“Everyone is a prisoner of his own experiences. No one can eliminate prejudices, just recognize them.” —Edward R. Murrow*

Some people are naturally creative, but most of us have to work at it. Unfortunately, the human mind has several inherent processes that inhibit creative thinking.

**Conditioned thinking** - Most people develop a certain fixed way of thinking based on their previous knowledge and training (Beveridge 1957). Once a thought process is formed, it is usually very difficult to

overcome. Most professional groups are guilty of such conditioned thinking, and nursery managers are no exception. Realizing this common pitfall is the first step in dealing with it.

**Persistent errors** - Having committed an error once, we often have an unconscious tendency to repeat the error again and again (Beveridge 1957). Apparently, the human mind is unable to detect these persistent errors. Often, getting a fresh perspective, such as having someone check your work, is effective.

**Functional fixedness** - This is the tendency to see only one use for an object. Unfortunately, the more highly specialized a person's field is, the more likely that person is to fall victim to this trait (Campbell 1977). One of my favorite quotes is: “People who are good with hammers see every problem as a nail”.

## Five Steps to Creative Problem Solving

Even novice nursery managers can become proficient problem solvers by following a systematic procedure based on creative thinking (Landis 1984). An effective problem solving procedure consists of five steps (Figure 2).

*“Trouble that is easily recognized is half-cured.”  
— St. Francis de Sales*

**Step 1. Identifying the problem** - A problem has to be noticed and acknowledged before it can be solved. Problem identification requires knowledge and experience because a manager must know what is right before being able to recognize what is wrong: nursery managers must know what a healthy seedling looks like before they can identify a sick one. Managers must be observant and open minded, and think in terms of the differences between “what is” and “what should be”. Because problems often develop gradually, these individual differences may go unnoticed until the situation reaches a critical level. Problem identification is also subject to changes in the state of knowledge about a specific operation. An increased understanding of a certain procedure can expose problems where they either did not exist before or lay unseen.

*“Thinking a problem through is hard for the untrained mind.” - Anonymous*

**Step 2. Analyzing the problem** - Problem analysis begins with the development of a clear statement about

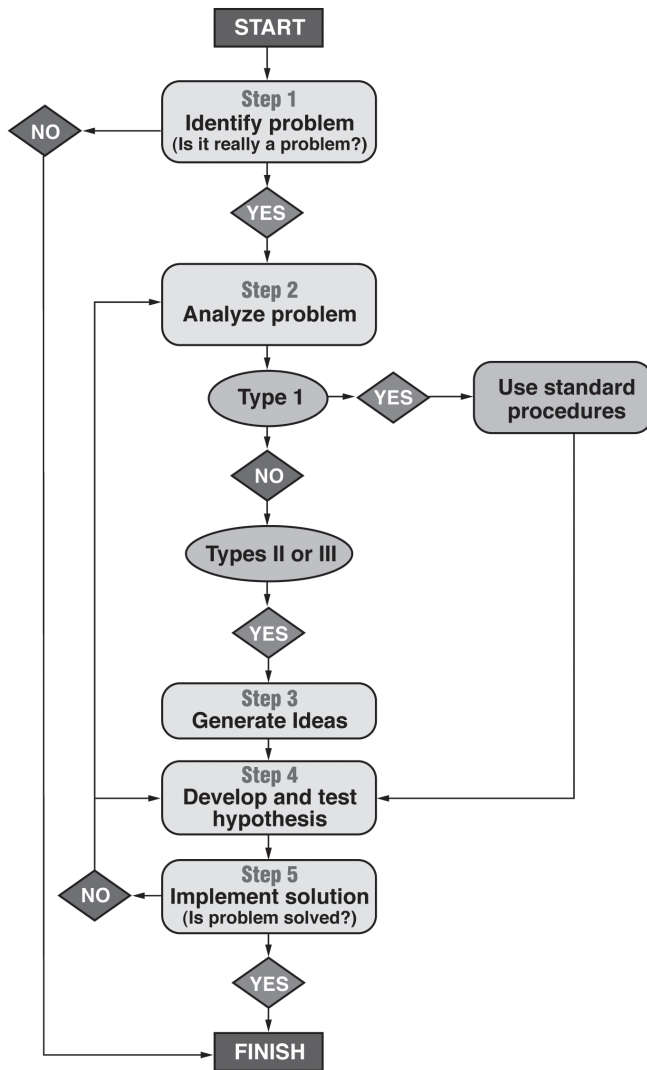


Figure 2 - This problem solving flow chart consists of 5 steps and can be used to solve a variety of nursery problems (Landis 1984).

the situation. Once identified, the problem should be described as accurately as possible; asking the questions **what, when, where, and how much** are often helpful. Make a list of knowns and unknowns to order your observational data in some way. The trick is to carefully delineate the boundaries of the problem before attempting to solve it.

Try to observe with an impartial, open mind and not to confuse symptoms with causes. Because it is impossible to observe everything closely, be discriminating—try to identify the significant characteristics. Often, the exceptional attribute of a problem is the critical element and can lead to the explanation of what happened (Beveridge 1957). Double check to be sure that the stated problem is the real problem; too often it is not. Further-

more, the real problem can be easier to solve than the stated one because it is almost impossible to solve a poorly defined problem (Furuta 1978).

Once the significant information has been gathered and organized, the problem should be ranked in terms of importance, urgency, and change (Rice 1981).

The **importance** of the problem will dictate whether it is worth solving, assuming it is solvable at all (Furuta 1978). Specify the available resources (money, personnel, time) that can be expended on the solution; some problems just cannot be solved economically.

The **urgency** of the situation will determine whether it must be dealt with immediately or can be postponed. Consider the amount of time that can be allotted to the given problem.

The **change** in nature, if any, of the problem also must be evaluated. Determine whether the problem is getting better or worse or remaining the same; a situation that is deteriorating will be more threatening than one that is improving.

*“In every work of genius, we recognize our own rejected thoughts.”—Ralph Waldo Emerson*

**Step 3. Generating ideas** - A good knowledge base, which is the primary prerequisite for the creative process, can be obtained from nursery literature, staff discussions, and experts in the forest and native plant nursery field. Nursery literature includes manuals, technical books, and research publications. Publications in the fields of agronomy and horticulture or other related sciences can be valuable sources of new ideas; many of the cultural practices now used in tree nurseries were originally developed for other crops. Older nursery publications should not be ignored because many “outdated” ideas may be able to be modified for solving the problems of today. The Forest Nursery Notes database on the Reforestation, Nurseries, and Genetic Resources website ([www.rngr.net](http://www.rngr.net)) is an invaluable source of published information on nursery practices (Figure 3A). Not only does it contain all the articles from past issues of Forest Nursery Notes, but also the National Nursery Proceedings, Tree Planters’ Notes, as well as valuable contact information.

The nursery staff is also a valuable source of information. Many of these people have accumulated a considerable amount of experience over the years. By presenting a problem at a staff meeting, nursery managers can benefit from a variety of different experiences and gain



URL: <http://www.rngr.net> **A**



Figure 3 - It's easy to search for published information on nursery culture at the Forest Nursery Notes database (A); visiting other nurseries and talking with other growers can be a big help in problem solving (B).

valuable new perspectives about the problem. Attending nursery meetings and workshops is an excellent way to learn more about nursery practices, and meet other growers who can be an invaluable source of information. The old biblical proverb that "there's nothing new under the sun" certainly applies to nursery problem solving. It's very likely that other nurseries have faced similar situations, so visiting other nurseries during field trips can be eye opening (Figure 3B).

Ideas can be generated by either single individuals or groups. Group sessions have the benefit of a variety of people with different perspectives, and the interaction of experts and less well-educated individuals can sometimes result in innovative ideas (Hunt 1982). Groups that contain individuals of different status in an organization, however, can actually stifle creative expression because lower ranked employees may feel intimidated. So, the best approach is to use both private consultations and group techniques during problem solving.

*"One of the great tragedies of science is the slaying of beautiful hypotheses by ugly facts." - T. H. Huxley*

**Step 4. Developing and testing hypotheses** - Once a list of possible solutions is developed, each must be

evaluated and decisions made so that ideas can be converted into hypotheses. In most cases, the available information will not point clearly to one hypothetical solution, and managers will have to make decisions based on incomplete evidence. However, most decisions are made under some degree of uncertainty because all the facts will never be known (Furuta 1978). Another of my favorite quotes is: "Just because we don't know everything doesn't mean we don't know anything."

A manager must keep an open mind during the evaluation process and take time to consider all aspects of the situation. The most obvious solutions are not always the best, and once an opinion has been formed, it is more difficult to think of alternatives. Beware of ideas that seem obvious and are accepted without question. In evaluating various ideas, it is important to consider all possible consequences so that the solution to one problem does not generate a new one. Managers must accept the fact that some ideas simply are not practical operationally or economically. However, ideas that initially seem impractical may be able to be modified to a more practical form. Unfortunately, most people are inclined to judge in the light of their own experience, knowledge, and prejudices rather than on the actual evidence. Remember that hypothesis testing takes time. If a problem requires an immediate solution, implementing an short term solution may be best until adequate testing can be completed (Beveridge 1957).

*"A man's legs must be long enough to reach the ground." - Abraham Lincoln*

**Step 5. Implementing a solution** - The last step in the problem solving system is testing the hypothesis operationally. Some hypotheses may seem adequate in small scale tests, but may fail under operational conditions.

Once a hypothesis has been tested and implemented, a decision must be made as to whether the problem is completely solved. If the hypothesis provides an acceptable solution to the problem, then problem solving is complete. If not, then it is necessary to return to Step 4 to develop an alternative hypothesis or to Step 2 to reanalyze the problem (Figure 1). For complex problems, several different hypotheses may need to be tested before an acceptable solution is found.

## Becoming Better Problem Solvers

*"Nature never overlooks a mistake, or makes the smallest allowance for ignorance." - T. H. Huxley*



*Figure 4 - One of the best approaches to nursery problem solving is to use an experienced nursery worker as a scout who regularly walks through the crop and documents any potential problems.*

The basic role of management is to achieve certain specified objectives. The objective in forest or native plant nurseries is obvious: to produce a specific number of healthy seedlings on a given date and at a reasonable cost. Most nursery problems arise when this objective is not met, either directly or indirectly. Nursery managers must realize that learning is a continuous process but that they can never learn enough about the technical aspects of their operation. New information is constantly being generated, and managers must attempt to stay abreast of new developments.

However, pure knowledge about nursery science is not enough; it must be tempered by actual field experience. Experts can take shortcuts in problem solving because their knowledge is functionally organized; this skill is the result of many years of practical experience (Hunt 1982). Experience can be acquired directly through time on the job, or indirectly, through visits to other nurseries and discussions with other nursery managers. Actual “eyes on the ground” are absolutely necessary in creative problem solving, so assigning one trusted employee to be a scout is an excellent approach (Simone 1996). Nursery managers and growers have their hands full with a wide variety of management activities so it’s a good idea to assign an experienced worker as a scout who regularly inspects the crops and documents any potential problems (Figure 4). Ideally, the scout is the same person who measures seedlings and develops the nursery growth records. Nursery scouts should also receive additional training in pest management.

Although problems cannot always be avoided, their effect can be minimized if managers have a flexible plan. Develop “What If?” scenarios for each nursery operation. For example, lifting season is always demanding due to frequently changing weather, so be sure to inform your workers accordingly. If the soil is too wet or frozen early in the morning, having a phone tree will make sure that each member of the crew is informed without creating extra work for the nursery managers.

Realizing that problems are to be expected can make a manager’s job much more enjoyable. Just remember that “Murphy’s Law” applies in spades to nursery work.

## Sources

- Beveridge WIB. 1957. The art of scientific investigation. New York (NY): Vintage Books. New York. 239 p.
- Campbell D. 1977. Take the road to creativity and get off your dead end. Niles (IL): Argus Communications. 136 p.
- Furuta T. 1978. Environmental plant production and marketing. Arcadia (CA): Cox Publishing Company. 232 p.
- Hunt M. 1982. The universe within. New York (NY): Simon and Schuster. 415 p.
- Landis, TD. 1984. Problem solving in forest-tree nurseries with emphasis on site problems. In: Duryea ML, Landis TD, editors. Forest Nursery Manual: Production of Bareroot Seedlings. Hingham (MA): Kluwer Academic Publishers. p 307-314.
- Landis TD. 2011. The importance of crop growth monitoring. Forest Nursery Notes 31(2):19-24.
- Rice CA. 1981. Rational problem solving—a training course manual. Boulder (CO): Programs in Communication Inc. 51 p.
- Simone GW. 1996. A scout is critical to your IPM program. Greenhouse Management and Production 16(9):53-54.
- Van Gundy AB. 1981. Techniques of structured problem solving. New York (NY): Van Nostrand Reinhold. 301 p.

---

## Nursery Safety: Publications and Training

---

by Thomas D. Landis

Safety is a year-round concern but winter is a great time to review nursery policies and schedule training. I'm always on the lookout for good safety information and wanted to make sure that nurseries were aware of the latest information.

### Simple solutions: ergonomics for farm workers

Baron S, Estill CF, Steege A, Lalich N. 2001. eds.  
DHHS (NIOSH) Publication No. 2001-111.  
Cincinnati, OH: National Institute for Safety and Health. 46 p.

Backaches or pain in the shoulders, arms, and hands are occupational hazards when working in nurseries or tree planting. The technical term for these sprains and strains is “work-related musculoskeletal disorders” or WMSDs. One-third of all missed work injuries are sprains and strains, and one-fourth are back injuries. More importantly, they are also the most common causes for disability claims. Much of nursery work is done in a stooped position, and often in cool or damp weather. In addition, many nursery tasks require workers to carry heavy weights in awkward positions, kneel often, or move their hands and wrists repetitively. Equipment operators are subjected to repeated vibration. NIOSH (National Institute for Occupational Safety and Health) worked with specialists in the science of ergonomics to determine how nursery worker could be made safer. This pamphlet offers some simple, practical, and inexpensive solutions. Although it deals with all types of farm work, nurseries should be able to modify some of these ideas to their own operations.

You can order Adobe PDF copies of this publication from the following website or contact NIOSH for hard copies:

NIOSH Publications Dissemination  
4676 Columbia Parkway • Cincinnati, OH 45226-1998  
Telephone: 1.800.356.4674 • FAX: 513.533.8573  
E-mail: [pubstft@cdc.gov](mailto:pubstft@cdc.gov)  
Website: [www.cdc.gov/niosh](http://www.cdc.gov/niosh)

### Preventing noise-induced hearing loss

Beckley B. 2010.  
Tech Tip 1067-2321P-MTDC. Missoula, MT: U.S. Department of Agriculture, Forest Service,  
Missoula Technology and Development Center. 16 p.

Noise-induced hearing loss is almost always preventable and nursery workers can be exposed to loud noises for extended periods of time. The Occupational Safety and Health Administration mandates that employers supply personal protective equipment and provide training on how to use it correctly. This handy publication includes information about the causes of noise-induced hearing loss and provide practical ways to minimize exposure.

For hard copies of the pamphlet, contact the Missoula Technology and Development Center, or you can download PDF files from their website:

USDA Forest Service  
Missoula Technology and Development Center  
5785 Hwy. 10 West • Missoula, MT 59808-9361  
TEL: 406.329.3978 • FAX: 406.329.3719  
E-mail: [wo\\_mtdc\\_pubs@fs.fed.us](mailto:wo_mtdc_pubs@fs.fed.us)  
Website: <http://www.fs.fed.us/eng/pubs>

## **Increasing Nursery and Greenhouse Worker Safety**

Langlois S, Coker CE, Posadas B, Knight P, Coker R.

Biloxi, MS: Mississippi State University, Coastal Research & Extension Center.

Website: <http://coastal.msstate.edu/nurserytrainingvideos.html>. Accessed 02-28-12.

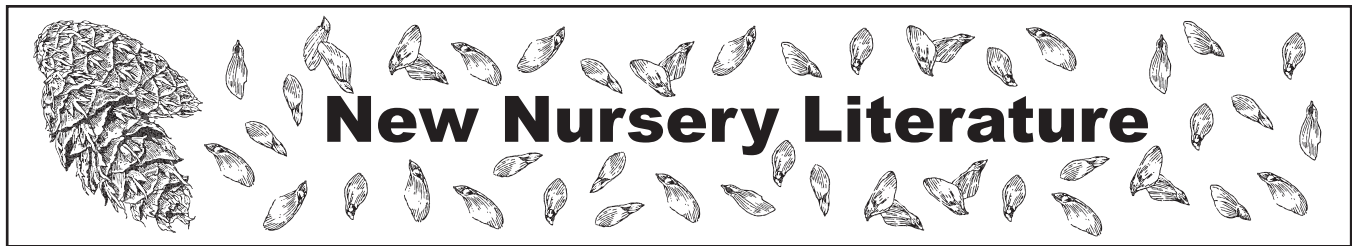
On this website, you can access a series of DVDs called “The Three E’s of Nursery and Greenhouse Safety.”

**Ergonomics** - This relatively new science studies human capabilities in relation to work demands. Worker posture and position, lifting techniques, and repetitive motions are just a few areas of concern in the green industry. By understanding these risk factors, employers can develop processes and tasks to minimize the potential for worker injury while increasing productivity and morale.

**Equipment** - Maximizing the effectiveness of equipment while minimizing the chance for injury is important in the green industry. This video series offers examples of using common nursery equipment to develop good work behaviors among your nursery and greenhouse workforce.

**Environment** - Nursery and greenhouse workers are exposed to all types of environmental conditions. In this video series, learn practical tips for dealing with the heat, humidity, cold, and rain, as well as dangerous insects and reptiles.

These bilingual (English/Spanish) safety training videos can be the perfect complement to your new employee training program or can be used as refresher training material reviewed at routine safety or team meetings. They are available at no charge for online viewing (FLV) and download (MP4). Choose the FLV link to open a new browser window that will show a Flash Video file or choose MP4 to begin downloading a file viewable with many video players.



## Special Order Publications

### **National Proceedings: Forest and Conservation Nursery Associations—2010**

Riley LE, Haase DL, Pinto JR, tech. coords. 2011

Proceedings RMRS-P-65. Fort Collins, CO: USDA Forest Service, Rocky Mountain Research Station. 183 p.

These proceedings are a compilation of 25 papers that were presented at the regional meetings of the forest and conservation nursery associations and the Intertribal Nursery Council meeting in the United States in 2010. The Joint Meeting of the Southern Forest Nursery Association and Northeastern Forest and Conservation Nursery Association was held at the Peabody Hotel in Little Rock, Arkansas on July 26 to 29, 2010. Subject matter for the technical sessions included marketing strategies, tree improvement programs, nursery certification, fumigation updates, and insect and disease management. The Joint Meeting of the Western Forest and Conservation Nursery Association and Forest Nursery Association of British Columbia: Target Seedling Symposium—2010 was held at the Sheraton Portland Airport Hotel in Portland, OR, on August 24 to 26, 2010. Subject matter for the technical sessions included the target seedling, seed handling, seedling nutrition, seedling culturing, pest management, nursery research and new technology, and general nursery topics. The Intertribal Nursery Council Meeting was held in Arlington, WA, on September 21 to 23, 2010. Subject matter for the technical sessions included native plant production for fisheries restoration, the use of small native plant nurseries in cultural and conservation education, energy conservation and alternative energy sources in nurseries, and the effects of climate change on nursery production.

*Ordering: Individual articles will be found on the Literature CD from this issue. You can download the Adobe PDF files at: <[http://www.fs.fed.us/rm/pubs/rmrs\\_p065.html](http://www.fs.fed.us/rm/pubs/rmrs_p065.html)>, or request a hard copy from:*

Richard D. Schneider, Publications Distribution • USDA-FS Rocky Mountain Research Station  
240 W. Prospect Road • Ft. Collins, CO 80526-2098 USA  
TEL: 970.498.1122 • FAX: 970.498.1396  
E-mail: [rschneider@fs.fed.us](mailto:rschneider@fs.fed.us)

### **Irrigation, 6th edition**

Stetson LE, Mecham BQ. 2011. Falls Church, VA: Irrigation Association. 1089 p.

This very large hardbound book is one of the primary resources for information on irrigation. Chapters with relevance to nurseries include: Soil-Water-Plant Relations; Irrigation Planning, Site Evaluation, and Design; Irrigation Water Requirements; Irrigation Water Supply; Hydraulics of Irrigation Systems; Irrigation Pumping Plants; Distribution System Components; Sprinkler Fundamentals; Microirrigation System Fundamentals; Electricity for Irrigation; Irrigation Scheduling; Performance Audits; Irrigation System Economics; Conservation and Environmental Protection; Contracting for Irrigation Equipment and Services; Agricultural Applications of Microirrigation; Agricultural Sprinkler Irrigation Systems; Greenhouse and Nursery Irrigation Practices; and Irrigation for Microclimate Control.

*Ordering: Hardbound copies can be purchased for \$179.00 (non-members) from*

The Irrigation Association  
6540 Arlington Blvd. • Falls Church, VA 22042  
TEL: 703.536.7080 • FAX: 703.536.7019  
Website: <http://www.irrigation.org/sixthedition/>

**A compact disk with all the following journal articles or publications in Adobe PDF format can be ordered using the Literature Order Form on the last page of this section. Note the 2 restrictions:**

- 1. Copyrighted Material.** Items with © are copyrighted and require a fee for each copy, so we will only send you the title page and abstract. If you want the entire article, you can order copies on-line or from a library service.
- 2. Special Orders (SO).** Special orders are books or other publications that, because of their size or cost, require special handling. For some, the Forest Service has procured copies for free distribution, but others will have to be purchased. Prices and ordering instructions are given following each listing in the New Nursery Literature section.

## Bareroot Production



- 1. © The effects of methyl bromide alternatives on soil and seedling pathogen populations, weeds, and seedling morphology in Oregon and Washington forest nurseries.** Weiland, J. E., Leon, A. L., Edmonds, R. L., and Littke, W. R. *Canadian Journal of Forest Research* 41:1885-1896. 2011.
- 2. © Nursery location and potassium enrichment in Aleppo pine stock. 1. Effect on nursery culture, growth, allometry and seedling quality.** del Campo, A. D., Hermoso, J., Ceacero, C. J., and Navarro-Cerrillo, R. M. *Forestry* 84(3):221-234. 2011.
- 3. © Nursery location and potassium enrichment in Aleppo pine stock. 2. Performance under real and hydrogel-mediated drought conditions.** del Campo, A. D., Hermoso, J., Ceacero, C. J., and Navarro-Cerrillo, R. M. *Forestry* 84(3):235-245. 2011.
- 4. Staying in rotation.** McCoy, M. *Digger Farwest Edition* 55(8):43-48. 2011.

## Business Management



- 5. Historical forest seedling production in the southern United States: 2008 to 2009 planting season.** Enebak, S. A. IN: *National Proceedings: Forest and Conservation Nursery Associations* — 2010, p. 19-34. Riley, L.E., Haase, D.L. and Pinto, J.R. technical coordinators. USDA Forest Service, Rocky Mountain Research Station, Proceedings RMRS-P-65. 2011.
- 6. © Increasing nursery and greenhouse worker safety.** Langlois, S., Coker, C. E., Posadas, B., and Knight, P. *Hortscience* 45(8 Suppl). 2011.
- 7. Panel discussion: Marketing hardwoods at the George O. White State Forest Nursery.** Hoss, G. IN: *National Proceedings: Forest and Conservation Nursery Associations* — 2010, p. 12-13. Riley, L.E., Haase, D.L. and Pinto, J.R. technical coordinators. USDA Forest Service, Rocky Mountain Research Station, Proceedings RMRS-P-65. 2011.
- 8. Preventing noise-induced hearing loss: safety measures for field employees.** Beckley, B. USDA Forest Service, Technology & Development Program, 1067-2321P-MTDC. 16 p. 2010.
- 9. © Ten basic principles for improved nursery performance.** Bingham, P. *International Plant Propagators' Society, combined proceedings, 2010*, 60:303-306. 2011.



## Container Production



### 10. © Biodegradable pots, the whys and the wherefores — a journey into the unknown.

Woolmore, M. International Plant Propagators' Society, combined proceedings, 2010, 60:182-184. 2011.

11. © Care and handling of container plants from storage to outplanting. Landis, T. D. and Dumroese, R. K. International Plant Propagators' Society, combined proceedings, 2010, 60:263-272. 2011.

12. © CCROP -- simulation model for container-grown nursery plant production. Million, J. B., Ritchie, J. T., Yeager, T. H., and Larsen, C. A. Scientia Horticulturae 130:874-886. 2011.

13. © Cleaning used media and containers with steam and hot water. Hammond, E. International Plant Propagators' Society, combined proceedings, 2010, 60:253-256. 2011.

14. © Effect of container color on substrate temperatures and growth of red maple and redbud. Markham, J. W., Bremer, D. J., Boyer, C. R., and Schroeder, K. R. HortScience 46(5):721-726. 2011.

15. Effect of mini-plug container depth on root and shoot growth of four forest tree species during early developmental stages. Kostopoulou, P., Radoglou, K., Papanastasi, O. D., and Adamidou, C. Turkish Journal of Agriculture and Forestry 35:379-390. 2011.

16. © Greenhouse and landscape performance of bedding plants in biocontainers. Kuehny, J. S., Taylor, M., and Evans, M. R. HortTechnology 21(2):155-161. 2011.

17. © Growth of containerized *Acer saccharinum* from seed in a cedar-amended substrate. Starr, Z. W., Boyer, C. R., and Griffin, J. J. HortScience 45(8 Suppl). 2011.

18. Nursery cultural practices to achieve targets: a case study in western larch irrigation. Davis, A. S.

and Keefe, R. F. IN: National Proceedings: Forest and Conservation Nursery Associations -- 2010, p. 128-132. Riley, L.E., Haase, D.L. and Pinto, J.R. technical coordinators. USDA Forest Service, Rocky Mountain Research Station, Proceedings RMRS-P-65. 2011.

19. © Optimizing substrate moisture measurements in containerized nurseries. Daniels, A. B., Barnard, D. M., Chapman, P. L., and Bauerle, W. L. HortScience 47(1):98-104. 2012 .

20. Repetitive reaction and restitution ( $R^3$ ) induction of drought hardiness in conifer container seedlings. Hodgson, J. IN: National Proceedings: Forest and Conservation Nursery Associations — 2010, p. 83-86. Riley, L.E., Haase, D.L. and Pinto, J.R. technical coordinators. USDA Forest Service, Rocky Mountain Research Station, Proceedings RMRS-P-65. 2011.

21. Targeting hardwoods. Jacobs, D. F. IN: National Proceedings: Forest and Conservation Nursery Associations -- 2010, p. 115-120. Riley, L.E., Haase, D.L. and Pinto, J.R. technical coordinators. USDA Forest Service, Rocky Mountain Research Station, Proceedings RMRS-P-65. 2011.

22. Understanding container moisture. Owen, J., Stoven, H., and Bailey, D. Digger 55(7):41-45. 2011.

## Diverse Species



23. © After-ripening, stratification, and perigynia removal enhance Pennsylvania sedge germination. McGinnis, E. E. and Meyer, M. H. HortTechnology 21(2):187-192. 2011.

24. © A brief history of native plants. Jones, T. International Plant Propagators' Society, combined proceedings, 2010, 60:236-240. 2011.

25. Can environmental variation affect seedling survival of plants in northeastern Mexico? Garcia, J. F. Arch. Biol. Sci., Belgrade 63(3):731-737. 2011.

- 26. © Challenges of propagating medicinal plants.** Jackson, F. V. International Plant Propagators' Society, combined proceedings, 2010, 60:332-334. 2011.
- 27. © Comparison of seed germination techniques for common elderberry (*Sambucus nigra* L. ssp. *canadensis*).** Leif, J. W., Durling, J. C., and Burgdorf, D. W. Native Plants Journal 12(2):132-135. 2011.
- 28. Cross-cultural collaboration for riparian restoration on tribal lands in Kansas.** Barden, C. J., Fisher, L., Welton, W. M., and Dyer, R. IN: Pathways for getting to better water quality: the citizen effect, p. 171-179. 2011.
- 29. © Current nursery practice with regard to mycorrhizas and the propagation of New Zealand's native plants.** Williams, A. International Plant Propagators' Society, combined proceedings, 2010, 60:160-166. 2011.
- 30. © Development and plasticity of endangered shrub *Lindera melissifolia* (Lauraceae) seedlings under contrasting light regimes.** Lockhart, B. R., Gardiner, E. S., Stautz, T., and Leininger, T. D. Plant Species Biology 27:30-45. 2012.
- 31. © Direct seeding for riparian tree re-vegetation: small-scale field study of seeding methods and irrigation techniques.** Grabau, M. R., Milczarek, M. A., Karpiscak, M. M., and Raulston, B. Ecological Engineering 37:864-872. 2011.
- 32. © Early field performance of *Acacia koa* seedlings grown under subirrigation and overhead irrigation.** Davis, A. S., Pinto, J. R., and Jacobs, D. F. Native Plants Journal 12(2):94-99. 2011.
- 33. Effect of acid scarification and cold moist stratification on the germination of *Cercis siliquastrum* L. seeds.** Pipinis, E., Milios, E., Smiris, P., and Gioumousidis, C. Turkish Journal of Agriculture and Forestry 35:259-264. 2011.
- 34. Effect of cold storage, heat, smoke and charcoal on breaking seed dormancy of *Arctostaphylos pungens* HBK (Ericaceae).** Jurado, E., Marquez-Linares, M., and Flores, J. Phytion 80:101-105. 2011.
- 35. © Effect of deep planting on landscape shrubs.** Downer, A. J., Hodel, D. R., and Mochizuki, M. J. Hortscience 45(8 Suppl). 2011.
- 36. © Effect of gibberellic acid on germination of seeds of five species of cacti from the Chihuahuan desert, northern Mexico.** Rojas-Arechiga, M., Aguilar, K. M., Golubov, J., and Mandujano, M. C. Southwestern Naturalist 56(3):393-435. 2011.
- 37. © Effects of irrigation frequency and nitrogen fertilizer rate on water stress, nitrogen uptake, and plant growth of container-grown *Rhododendron*.** Scagel, C. F., Bi, G., Fuchigami, L. H., and Regan, R. P. HortScience 46(12):1598-1603. 2011.
- 38. © The effects of nitrogen addition on the growth of two exotic and two native forest understory plants.** Ross, K. A., Ehrenfeld, J. G., and Patel, M. V. Biological Invasions 13:2203-2216. 2011.
- 39. © Establishing native plants in a weedy riparian environment.** Smaill, S. J., Ledgard, N., Langer, E. R., and Henley, D. New Zealand Journal of Marine and Freshwater Research 45(3):357-367. 2011.
- 40. © Fern propagation 101.** Berger, T. International Plant Propagators' Society, combined proceedings, 2010, 60:198-200. 2011.
- 41. © Field establishment of little bluestem and prairie dropseed under managed conditions.** Fedewa, C. A. and Stewart, J. R. Native Plants Journal 12(2):111-117. 2011.
- 42. © Forest restoration potentials of coal-mined lands in the eastern United States.** Zipper, C. E., Burger, J. A., McGrath, J. M., Rodrigue, J. A., and Holtzman, G. I. Journal of Environmental Quality 40:1567-1577. 2011.
- 43. © Germination of seeds in the endangered *Abronia macrocarpa*.** Goodson, J. and Williamson, P. S. Southwestern Naturalist 56(2):141-146. 2011.
- 44. © Germination of the federally endangered Michaux's sumac (*Rhus michauxii*).** Bolin, J. F., Jones, M. E., and Musselman, L. J. Native Plants Journal 12(2):119-122. 2011.
- 45. © Germination of two seed types from three *Dalea* species.** Molano-Flores, B., Coons, J. M., and Cunningham, J. B. Castanea 76(3):266-271. 2011.

- 46. How a planting changes over time.** Munro, N. and Lindenmayer, D. IN: *Planting for wildlife: a practical guide to restoring native woodlands*, p. 63-73. CSIRO Publishing.
- 47. © How do riparian woody seedlings survive seasonal drought?** Stella, J. C. and Battles, J. J. *Oecologia* 164:579-590. 2010.
- 48. © It's not all asphalt: Washington State Department of Transportation's use of native plants.** Buis, S. *International Plant Propagators' Society, combined proceedings, 2010*, 60:241-244. 2011.
- 49. © Local adaptation and the effects of grazing on the performance of *Nassella pulchra*: implications for seed sourcing in restoration.** Hufford, K. M. and Mazer, S. J. *Restoration Ecology*, published online Dec. 2011. 2011.
- 50. © Maine nursery and landscape industry perspectives on invasive plant issues.** Coats, V. C., Stack, L. B., and Rumpho, M. E. *Invasive Plant Science and Management* 4:378-389. 2011.
- 51. © Native Plant Materials Directory.** *Native Plants Journal* 12(2):136-211. 2011.
- 52. © Optimized scarification protocols improve germination of diverse *Rubus* germplasm.** Wada, S. and Reed, B. M. *Scientia Horticulturae* 130:660-664. 2011.
- 53. © Overcoming dormancy and enhancing germination of *Sphaeralcea munroana* seeds.** Kildisheva, O. A., Dumroese, R. K., and Davis, A. S. *HortScience* 46(12):1672-1676. 2011.
- 54. Plant material collection guide.** St. John, L., Ogle, D. G., Scianna, J., and Winslow, S. *USDA Natural Resources Conservation Service, Technical Note, TN Plant Materials No. 1*. 17 p. 2010.
- 55. Planting strategies to establish giant bulrush.** Mallison, C. T. and Thompson, B. Z. *Journal of Aquatic Plant Management* 48:111-115. 2010.
- 56. © Reproductive ecology of black mangrove (*Avicennia germinans*) along the Louisiana coast: propagule production cycles, dispersal limitations, and establishment elevations.** Alleman, L. K. and Hester, M. W. *Estuaries and Coasts* 34:1068-1077. 2011.
- 57. Seed ecology of *Lindera melissifolia* (Lauraceae) as it relates to rarity of the species.** Hawkins, T. S., Walck, J. L., and Hidayati, S. N. *Journal of the Torrey Botanical Society* 138(3):298-307. 2011.
- 58. © Seed germination of southern Chihuahuan Desert plants in response to elevated temperatures.** Perez-Sanchez, R. M., Jurado, E., Chapa-Vargas, L., and Flores, J. *Journal of Arid Environments* 75:978-980. 2011.
- 59. © Seed propagation of *Chionanthus pygmaeus* (Pygmy Fringetree), a rare woody species native to Florida.** Eads, A. and Stewart, J. R. *Hortscience* 45(8 Suppl). 2011.
- 60. Shrub-steppe species germination trials and survival after outplanting on bare soils.** Link, S. O., Cruz, R. O., Harper, B. L., Jones, J. D., and Penney, B. L. IN: *National Proceedings: Forest and Conservation Nursery Associations — 2010*, p. 159-167. Riley, L.E., Haase, D.L. and Pinto, J.R. technical coordinators. *USDA Forest Service, Rocky Mountain Research Station, Proceedings RMRS-P-65*. 2011.
- 61. © Sweet fern rhizome cutting success is influenced by propagation medium.** Lubell, J. D. and Brand, M. H. *International Plant Propagators' Society, combined proceedings, 2010*, 60:384-385. 2011.
- 62. © Using historic bushel weights to estimate seed quality.** Tilley, D. J. and Ogle, D. *Native Plants Journal* 12(2):107-110. 2011.
- 63. © <sup>15</sup>N-uptake in *Abies lasiocarpa* and *Abies nordmanniana* at low root temperatures.** Saebo, A. and Hanslin, H. M. *Scandinavian Journal of Forest Research* 26:399-403. 2011.



## Fertilization and Nutrition

64. © **The “4R” nutrient stewardship framework for horticulture.** Mikkelsen, R. L. HortTechnology 21(6):658-662. 2011.
65. © **Above- and below-ground nutrient tissue concentration and leaf pigment changes in Patagonian woody seedlings grown under light and soil moisture gradients.** Esteban, R. S., Pastur, G. M., Lencinas, M. V., Moretto, A., and Peri, P. L. Journal of Plant Nutrition 34:2222-2236. 2011.
66. © **Adaptations to nitrogen form: comparing inorganic nitrogen and amino acid availability and uptake by four temperate forest plants.** Metcalfe, R. J., Nault, J., and Hawkins, B. J. Canadian Journal of Forest Research 41:1626-1637. 2011.
67. © **Application of the “4R” nutrient stewardship concept to horticultural crops: getting nutrients in the “right” place.** Bryla, D. R. HortTechnology 21(6):674-682. 2011.
68. © **Application of the “4R” nutrient stewardship concept to horticultural crops: selecting the “right” nutrient source.** Gaskell, M. and Hartz, T. HortTechnology 21(6):663-666. 2011.
69. © **Autumn fertilization of *Quercus ilex* ssp. *ballota* (Desf.) Samp. nursery seedlings: effects on morpho-physiology and field performance.** Andivia, E., Fernandez, M., and Vazquez-Pique, J. Annals of Forest Science 68:543-553. 2011.
70. © **Chrysanthemum production in composted and noncomposted organic waste substrates fertilized with nitrogen at two rates using surface and subirrigation.** Krucker, M., Hummel, R. L., and Cogger, C. HortScience 45(1):1695-1701. 2010.
71. © **Differential field response of two Mediterranean tree species to inputs of sewage sludge at the seedling stage.** Valdecantos, A., Cortina, J., and Vallejo, V. R. Ecological Engineering 37:1350-1359. 2011.
72. © **Effectiveness, ammonium impact and potassium adequacy of soybean-base liquid fertilizer on bedding plants.** Nelson, P. V., Niedziela, C. E., Jr., Pitchay, D. S., and Mingis, N. C. Journal of Plant Nutrition 33:724-735. 2010.
73. © **Efficacy of soybean-base liquid fertilizer for greenhouse crops.** Nelson, P. V., Pitchay, D., Niedziela, C. E., Jr., and Mingis, N. C. Journal of Plant Nutrition 33:351-361. 2010.
74. **Efficiency of phosphorus use in young plants of *Eucalyptus urophylla* S.T. Blake.** Godoy, T. G. and Rosada, S. C. Cerne, Lavras 17(3):303-308. 2011.
75. **Evidence for nitrogen-fixation in the Salicaceae Family.** von Wuehlisch, G. Tree Planters' Notes 54(2):38-41. 2011.
76. © **Fall fertilization of holm oak affects N and P dynamics, root growth potential, and post-planting phenology and growth.** Oliet, J. A., Salazar, J. M., Villar, R., and Robredo, E. Annals of Forest Science 68:647-656. 2011.
77. © **Growth, foliar nutrition and  $\delta^{13}C$  responses of red alder (*Alnus rubra*) to phosphorus additions soon after planting on moist sites.** Brown, K. R., Courtin, P. J., and Negrave, R. W. Forest Ecology and Management 262:791-802. 2011.
78. © **Metal stress and decreased tree growth in response to biosolids application in greenhouse seedlings and in situ Douglas-fir stands.** Cline, E. T., Nguyen, Q. T. N., Rollins, L., and Gawel, J. E. Environmental Pollution 160:139-144. 2012.
79. © **Minimizing nutrient leaching and improving nutrient use efficiency of *Liriodendron tulipifera* and *Larix leptolepis* in a container nursery system.** Park, B. B., Cho, M. S., Lee, S. W., Yanai, R. D., and Lee, D. K. New Forests 43:57-68. 2012.
80. © **Nitrogen budgeting and quality of exponentially fertilized *Quercus robur* seedlings in Ireland.** Schmal, J. L., Jacobs, D. F., and O'Reilly, C. European Journal of Forest Research 130:557-567. 2011.
81. © **Nitrogen forms affect root structure and water uptake in the hybrid poplar.** Domenicano, S., Coll, L., Messier, C., and Berninger, F. New Forests 42:347-362. 2011.
82. **Nitrogen rhizodeposition of legumes.** Fustec, J., Lesuffleur, F., Mahieu, S., and Cliquet, J.-B. IN: Sustainable agriculture, volume 2, p. 869-881. E. Lichtfouse et al, editors. Springer Science. 2011.

**83. © Nutrient deprivation improves field performance of woody seedlings in a degraded semi-arid shrubland.** Trubat, R., Cortina, J., and Vilagrosa, A. *Ecological Engineering* 37:1164-1173. 2011.

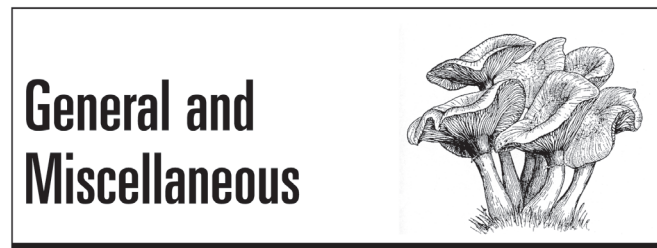
**84. Nutrient loading of Norway spruce seedlings hastens bud burst and enhances root growth after outplanting.** Luoranen, J. and Rikala, R. *Silva Fennica* 45(3):319-329. 2011.

**85. © The production and use of compost tea extract for improved plant growth.** Eigenraam, K. International Plant Propagators' Society, combined proceedings, 2010, 60:307-311. 2011.

**86. © Recycled liquid cattle manure as a sole fertilizer source for growing container nursery stock in a closed system.** Alam, M. Z. and Chong, C. *HortScience* 45(1):157-160. 2010.

**87. Seedling mineral nutrition, the root of the matter.** Hawkins, B. J. IN: National Proceedings: Forest and Conservation Nursery Associations — 2010, p. 87-97. Riley, L.E., Haase, D.L. and Pinto, J.R. technical coordinators. USDA Forest Service, Rocky Mountain Research Station, Proceedings RMRS-P-65. 2011.

**88. © Selecting the right nutrient rate: basis for managing fertilization programs.** Santos, B. M. *HortTechnology* 21(6):683-685. 2011.



**89. © ACCEPtS: an alliance for cooperative course sharing in the plant sciences.** Evans, M. R., Harkess, R., Kuehny, J., and Cole, J. *HortTechnology* 21(6):696-697. 2011.

**90. A century of tree planting: Wisconsin's forest nursery system.** Auer, J. J. *Tree Planters' Notes* 54(2):23-29. 2011.

**91. Climate change and forest biodiversity: a vulnerability assessment and action plan for National Forests in western Washington.** Aubry, C., Devine, W., Shoal, R., Bower, A., and Miller, J. USDA Forest Service, Pacific Northwest Region. 2011.

**92. © Development of the AG\*IDEA alliance's horticulture graduate certificates program and inter-institutional course share.** Paparozzi, E. T., Williams, K. A., Geneve, R., and Hatterman-Valenti, H. *HortTechnology* 21(6):688-691. 2011.

**93. © Educating the next generation.** Chandler, A. F. International Plant Propagators' Society, combined proceedings, 2010, 60:217-223. 2011.

**94. © Floriculture sustainability research coalition: bringing the latest sustainability research to the industry.** Burnett, S., Mattson, N., Drug, B., and Lopez, R. *HortTechnology* 21(6):692-693. 2011.

**95. Forestry and tree planting in North Carolina.** Roeder, K. *Tree Planters' Notes* 54(2):12-22. 2011.

**96. Forests and forestry in Arkansas during the last two centuries.** Bragg, D. C. IN: National Proceedings: Forest and Conservation Nursery Associations -- 2010, p. 3-9. Riley, L.E., Haase, D.L. and Pinto, J.R. technical coordinators. USDA Forest Service, Rocky Mountain Research Station, Proceedings RMRS-P-65. 2011.

**97. © A general model for assessment of the carbon sequestration potential of afforestation projects.** Meilby, H. and Helles, F. *New Forests* 42:383-396. 2011.

**98. © Global change, global trade, and the next wave of plant invasions.** Bradley, B. A., Blumenthal, D. M., Early, R., and Grosholz, E. D. *Frontiers in Ecology and Environment* 10(1):20-28. 2012.

**99. Growing trees in Georgia.** Pohl, R. and Kelly, S. *Tree Planters' Notes* 54(1):4-9. 2011.

**100. © A life cycle assessment case study for walnut tree (*Juglans regia* L.) seedlings production.** Cambria, D. and Pierangeli, D. *International Journal of Life Cycle Assessment* 16:859-868. 2011.

**101. © Life cycle assessment of the production and use of polypropylene tree shelters.** Arnold, J. C. and Alston, S. M. *Journal of Environmental Management* 94:1-12. 2012.

**102. © Opportunities and challenges for ecological restoration within REDD+.** Alexander, S., Nelson, C. R., Aronson, J., and Lamb, D. *Restoration Ecology* 19(6):683-689. 2011.

**103. An overview of rural forestry tree planting in North Dakota.** Kangas, M. *Tree Planters' Notes* 54(1):15-17. 2011.

**104. Rehabilitating Afghanistan's natural resources.** Hernandez, G. IN: National Proceedings: Forest and Conservation Nursery Associations — 2010, p. 46-48. Riley, L.E., Haase, D.L. and Pinto, J.R. technical coordinators. USDA Forest Service, Rocky Mountain Research Station, Proceedings RMRS-P-65. 2011.

**105. RNGR: a national resource for reforestation, restoration, and nursery professionals.** Haase, D. L., Pinto, J. R., Dumroese, R. K., and Hernandez, G. *Tree Planters' Notes* 54(1):28-34. 2011.

**106. © Species spellchecker fixes plant glitches: Online tool should weed out misspellings and duplications.** Whitfield, J. *Nature* 474:263. 2011.

**107. Tree planting in Alaska.** Graham, J. S. and Joyner, P. A. *Tree Planters' Notes* 54(2):4-11. 2011.

**108. Tree planting in Indiana.** Hawkins, B. and O'Connor, P. *Tree Planters' Notes* 54(1):10-14. 2011.

**109. Weyerhaeuser in Arkansas.** Hearnberger, J. IN: National Proceedings: Forest and Conservation Nursery Associations -- 2010, p. 10-11. Riley, L.E., Haase, D.L. and Pinto, J.R. technical coordinators. USDA Forest Service, Rocky Mountain Research Station, Proceedings RMRS-P-65. 2011.

**SO. National Proceedings: Forest and Conservation Nursery Associations — 2010.** Riley, L.E., Haase, D.L. and Pinto, J.R. technical coordinators. USDA Forest Service, Rocky Mountain Research Station, Proceedings RMRS-P-65. 2011. 183 p. All papers are included in this issue of Forest Nursery Notes. Available at: [http://www.fs.fed.us/rm/pubs/rmrs\\_p065.html](http://www.fs.fed.us/rm/pubs/rmrs_p065.html).

## Genetics and Tree Improvement



**110. © Assisted migration to address climate change: recommendations for aspen reforestation in western Canada.** Gray, L. K., Gylander, T., Mbogga, M. S., Chen, P., and Hamann, A. *Ecological Applications* 21(5):1591-1603. 2011.

**111. © Differences in growth and mineral nutrition of seedlings produced from ten white spruce seed orchards.** Carles, S., Lamhamedi, M. S., Beaulieu, J., and Stowe, D. C. *New Forests* 42:195-214. 2011.

**112. © Effects of propagule type on genetic parameters of wood density and growth in a loblolly pine progeny test at ages 10 and 11 years.** Cumbie, W. P., Isik, F., Li, B., and Goldfarb, B. *Tree Genetics & Genomes* 7:1147-1158. 2011.

**113. © Effects of seedling age on blister rust resistance assessments in eastern white pine and its hybrid backcrosses.** Lu, P. and Derbowka, D. *Canadian Journal of Forest Research* 42:67-74. 2012.

**114. Estimates of genetic gains for growth traits in young plants of *Eucalyptus urophylla* S.T. Blake.** Godoy, T. G. and da Silva Rosado, S. C. *Cerne*, Lavras 17(2):189-193. 2011.

**115. © Geographic patterns of genetic variation and population structure in *Pinus aristata*, Rocky Mountain bristlecone pine.** Schoettle, A. W., Goodrich, B. A., Hipkins, V., Richards, C., and Kray, J. *Canadian Journal of Forest Research* 42:23-37. 2012.

**116. Provenance variability in nursery growth of subalpine fir.** Cartwright, C. and Ying, C. IN: National Proceedings: Forest and Conservation Nursery Associations -- 2010, p. 110-114. Riley, L.E., Haase, D.L. and Pinto, J.R. technical coordinators. USDA Forest Service, Rocky Mountain Research Station, Proceedings RMRS-P-65. 2011.

**117. Restoration of propagation and genetic breeding of a critically endangered tree species, *Abies beshanzuensis*.** Shao, S. and Jin, Z. IN: Species diversity and extinction, p. 415-430. G.H. Tepper, editor. Nova Science Publishers, Inc. 2010.

**118. Who pays for tree improvement?** Byram, T. D. and Raley, E. M. IN: National Proceedings: Forest and Conservation Nursery Associations -- 2010, p. 14-18. Riley, L.E., Haase, D.L. and Pinto, J.R. technical coordinators. USDA Forest Service, Rocky Mountain Research Station, Proceedings RMRS-P-65. 2011.



## Mycorrhizae & Beneficial Microorganisms

**119. © Frankia assemblages associated with *Alnus rubra* and *Alnus viridis* are strongly influenced by host species identity.** Lipus, A. and Kennedy, P. G. International Journal of Plant Sciences 172(2):403-410. 2011.

**120. © Genetic diversity of symbiotic *Bradyrhizobium elkanii* populations recovered from inoculated and non-inoculated *Acacia mangium* field trials in Brazil.** Perrineau, M. M., Le Roux, C., de Faria, S. M., de Carvalho Balieiro, F., and Galiana, A. Systematic and Applied Microbiology 34:376-384. 2011.

**121. Hand in hand with the soil.** Rogers, R. Digger Farwest Edition 55(8):133-137. 2011.

**122. Molecular tools for rapid and accurate detection of black truffle (*Tuber melanosporum* Vitt.) in inoculated nursery plants and commercial plantations in Chile.** Cordero, C., Caceres, P., Gonzalez, G., and Quiroz, K. Chilean Journal of Agricultural Research 71(3):488-494. 2011.

**123. © Mycorrhizal colonization improves nutrient uptake efficiency of *Nassella pulchra* in nursery conditions.** Corkidi, L., Merhaut, D. J., Allen, E. B., and Bohn, J. Hortscience 45(8 Suppl). 2011.

**124. © New report of the mycorrhizal association between *Pisolithus tinctorius* (Sclerodermataceae, Basidiomycota) and *Quercus coccifera* (Fagaceae, Angiospermae).** Diaz, G. and Honrubia, M. , Mycologie 32(1):95-102. 2011.

**125. © Use of mycorrhizal colonization to reduce nitrogen and phosphorus leaching from nursery containers.** Corkidi, L., Merhaut, D. J., Allen, E. B., and Downer, A. J. Hortscience 45(8 Suppl). 2011.

## Nursery Structures & Equipment



**126. Alternative power sources - what are the options?** Bartok, J. W., Jr. Greenhouse Management 31(11):50-51. 2011.

**127. Comparing planting tools for container longleaf pine.** Leduc, D. J., Haywood, J. D., and Sung, S.-J. S. Tree Planters' Notes 54(1):24-27. 2011.

**128. Considering alternative fuels.** Kovalycsik, M. Greenhouse Management 31(8):54-56. 2011.

**129. © Development of a walk-behind type hand tractor powered vegetable transplanter for paper pot seedlings.** Kumar, G. V. P. and Raheman, H. Biosystems Engineering 110:189-197. 2011.

**130. Evolving environmental controls.** Pham, Y. Greenhouse Management 31(7):74, 76, 77. 2011.

**131. Greenhouse retrofits.** Brown, S. T. Greenhouse Management 31(7):70, 72, 73. 2011.

**132. © Growing and energy conservation.** van Steenis, E. International Plant Propagators' Society, combined proceedings, 2010, 60:245-252. 2011.

**133. Heat distribution options.** Bartok, J. W., Jr. Greenhouse Management 31(8):51-53. 2011.

**134. High tunnels.** Kleinhenz, M. D. Greenhouse Management 31(7):66-69. 2011.

- 135. A highly efficient machine planting system for forestry research plantations — the Wright-MSU method.** McKenna, J. R., Krauss, O. R., and Beheler, B. *Tree Planters' Notes* 54(2):32-37. 2011.
- 136. Increase water use efficiency with shading.** Parbst, K. *Greenhouse Management* 31(9):60-63. 2011.
- 137. © The Jet Harvester: a shop-built tool for harvesting forb and shrub seeds.** Tilley, D. J. and Bair, C. *Native Plants Journal* 12(2):123-127. 2011.
- 138. © A large-volume rhizotron for evaluating root growth under natural-like soil moisture conditions.** Silva, D. D. and Beeson, R. C., Jr. *HortScience* 46(12):1677-1682. 2011.
- 139. © Light-emitting diode lights: the future of plant lighting.** Seelye, J. F. and Mullan, A. C. International Plant Propagators' Society, combined proceedings, 2010, 60:171-178. 2011.
- 140. Lighting the way.** McCoy, M. *Digger* 55(12):27-29. 2011.
- 141. © Performance evaluation of a newly developed variable-rate sprayer for nursery liner applications.** Jeon, H. Y., Zhu, H., Derksen, R. C., and Ozkan, H. E. *Transactions of the ASABE* 54(6):1997-2007. 2011.
- 142. © Precision irrigation and nutrient management for nursery, greenhouse and green roof systems: sensor networks for feedback and feed-forward control.** Lea-Cox, J. D., Kantor, G. A., Bauerle, W. L., and van Iersel, M. *Hortscience* 45(8 Suppl). 2010.
- 143. Preventing greenhouse fires.** Jones, E. *Greenhouse Management* 31(7):78-81. 2011.
- 144. Save your crops with a backup generator.** Bartok, J. W., Jr. *Greenhouse Management* 31(12):69-70. 2011.
- 145. Solar panels.** Lieth, M. and Lieth, H. *Greenhouse Management* 31(7):S18-S23 (National Greenhouse Manufacturers Association Spotlight). 2011.
- 146. © Thermography as non invasive functional imaging for monitoring seedling growth.** Belin, E., Rousseau, D., Rojas-Varela, J., and Demilly, D. *Computers and Electronics in Agriculture* 79:236-240. 2011.
- 147. © Ways to increase energy efficiency in nurseries.** Cliffe, D. International Plant Propagators' Society, combined proceedings, 2010, 60:45-46. 2011.
- 148. What kind of insulation can be used on greenhouses?** Bartok, J. W., Jr. *Greenhouse Management* 31(9):84-85. 2011.
- 149. What's new with nurseries and reforestation projects at the Missoula Technology and Development Center?** Simonson, B. IN: National Proceedings: Forest and Conservation Nursery Associations — 2010, p. 35-39. Riley, L.E., Haase, D.L. and Pinto, J.R. technical coordinators. USDA Forest Service, Rocky Mountain Research Station, Proceedings RMRS-P-65. 2011.



- 150. © Abrupt drops in water table level influence the development of *Populus nigra* and *Salix alba* seedlings of different ages.** Guillo, H., Gonzalez, E., Muller, E., Hughes, F. M. R., and Barsoum, N. *Wetlands* 31:1249-1261. 2011.
- 151. © Amelioration of planting stress by soil amendment with a hydrogel-mycorrhiza mixture for early establishment of beech (*Fagus sylvatica* L.) seedlings.** Beniwal, R. S., Hooda, M. S., and Polle, A. *Annals of Forest Science* 68:803-810. 2011.
- 152. © Artificial regeneration with *Quercus ilex* L. and *Quercus suber* L. by direct seeding and planting in southern Spain.** Gonzalez-Rodriguez, V., Navarro-Cerrillo, R. M., and Villar, R. *Annals of Forest Science* 68:637-646. 2011.

- 153. The cost-efficiency of seedling packaging specifically designed for tree planting machines.** Ersson, B. T., Bergsten, U., and Lindroos, O. *Silva Fennica* 45(3):379-394. 2011.



- 154. © Deep planting has no short- or long-term effect on the survival and growth of white spruce, black spruce, and jack pine.** Paquette, A., Girard, J. P., and Walsh, D. Northern Journal of Applied Forestry 28(3):146-151. 2011.
- 155. © Do limited cold tolerance and shallow depth of roots contribute to yellow-cedar decline?** Schaberg, P. G., D'Amore, D. V., Hennon, P. E., Halman, J. M., and Hawley, G. J. Forest Ecology and Management 262:2142-2150. 2011.
- 156. © Effectiveness of five soil reclamation and reforestation techniques on oil and gas well sites in northeastern British Columbia.** McConkey, T., Bulmer, C., and Sanborn, P. Canadian Journal of Soil Science 92:165-177. 2012.
- 157. © Effects of aspect and slope position on growth and nutritional status of planted Aleppo pine (*Pinus halepensis* Mill.) in a degraded land semi-arid areas of Jordan.** Omary, A. A. New Forests 42:285-300. 2011.
- 158. © Effects of cultural intensity and planting density on stand-level aboveground biomass production and allocation for 12-year-old loblolly pine plantations in the Upper Coastal Plain and Piedmont of the southeastern United States.** Zhao, D., Kane, M., Borders, B., Subedi, S., and Akers, M. Canadian Journal of Forest Research 42:111-122. 2012.
- 159. © Effects of initial spacing on height development of loblolly pine.** Anton-Fernandez, C., Burkhardt, H. E., Strub, M., and Amateis, R. L. Forest Science 57(3):201-211. 2011.
- 160. © Effects of *Microstegium vimineum* (Trin.) A. Camus (Japanese stiltgrass) on native hardwood survival and growth: implications for restoration.** Beasley, R. R. and McCarthy, B. C. Natural Areas Journal 31(3):246-255. 2011.
- 161. © Effects of nurse-tree crop species and density on nutrient and water availability to underplanted *Toona ciliata* in northeastern Argentina.** Dordel, J., Simard, S. W., Bauhus, J., and Guy, R. D. Canadian Journal of Forest Research 41:1754-1768. 2011.
- 162. © The effects of the degree of soil cover with an impervious sheet on the establishment of tree seedlings in an arid environment.** Zegada-Lizarazu, W. and Berliner, P. R. New Forests 42:1-17. 2011.
- 163. © Emulating nursery plants to restore oak forests.** Badano, E. I., Samour-Nieva, O. R., and Flores, J. Ecological Engineering 37:1244-1248. 2011.
- 164. © Enrichment of big-leaf mahogany (*Swietenia macrophylla* King) in logging gaps in Bolivia: the effect of planting method and silvicultural treatments on long-term seedling survival and growth.** Navarro-Cerrillo, R. M., Griffith, D. M., Ramirez-Soria, M. J., and Pariona, W. Forest Ecology and Management 262:2271-2280. 2011.
- 165. © Establishment and growth of container seedlings for reforestation: a function of stocktype and edaphic conditions.** Pinto, J. R., Marshall, J. D., Dumroese, R. K., and Davis, A. S. Forest Ecology and Management 261:1876-1884. 2011.
- 166. Extending the planting period of container grown oriental spruce (*Picea orientalis* L. Link.) seedlings into summer.** Olmez, Z. and Suner, E. Not. Bot. Hort. Agrobot. Cluj. 39(1):292-296. 2011.
- 167. © Growth and nutrition of black spruce seedlings in response to disruption of *Pleurozium* and *Sphagnum* moss carpets in boreal forested peatlands.** Lafleur, B., Pare, D., Fenton N. J., and Bergeron, Y. Plant and Soil 345:141-153. 2011.
- 168. © Growth of aspen and white spruce on naturally saline sites in northern Alberta: implications for development of boreal forest vegetation on reclaimed saline soils.** Lilles, E. B., Purdy, B. G., Macdonald, S. E., and Chang, S. X. Canadian Journal of Soil Science 92:213-227. 2012.
- 169. © Growth of planted black spruce seedlings following mechanical site preparation in boreal forested peatlands with variable organic layer thickness: 5-year results.** Lafleur, B., Pare, D., Fenton, N. J., and Bergeron, Y. Annals of Forest Science 68:1291-1302. 2011.
- 170. © Growth responses to planting density and management intensity in loblolly pine plantations**

**in the southeastern USA Lower Coastal Plain.** Zhao, D., Kane, M., and Borders, B. E. *Annals of Forest Science* 68:625-635. 2011.

**171. Increasing survival and growth of Scots pine seedlings with selection based on autumn coloration.** Pulkkinen, P., Varis, S., Jaatinen, R., Leppanen, A., and Pakkanen, A. *Silva Fennica* 45(4):573-581. 2011.

**172. © Influence of initial age and size on the field performance of *Larix olgensis* seedlings.** Li, G. L., Liu, Y., Zhu, Y., and Yang, J. *New Forests* 42:215-226. 2011.

**173. Machine planting of Norway spruce by Bracke and Ecoplanter: an evaluation of soil preparation, planting method and seedling performance.** Luoranen, J., Rikala, R., and Smolander, H. *Silva Fennica* 45(3):341-357. 2011.

**174. Mounding and scalping prior to reforestation of hydrologically sensitive deep-peated sites: factors behind Scots pine regeneration success.** Pearson, M., Saarinen, K., Silvan, N., and Laine, J. *Silva Fennica* 45(4):647-667. 2011.

**175. © Nurse-plant and mulching effects on three conifer species in a Mexican temperate forest.** Blanco-Garcia, A., Saenz-Romero, C., Martorell, C., and Alvarado-Sosa, P. *Ecological Engineering* 37:994-998. 2011.

**176. Outplanting strategies — GRO TRZ Consulting Incorporated.** Farquharson, D. IN: National Proceedings: Forest and Conservation Nursery Associations -- 2010, p. 147-149. Riley, L.E., Haase, D.L. and Pinto, J.R. technical coordinators. USDA Forest Service, Rocky Mountain Research Station, Proceedings RMRS-P-65. 2011.

**177. © Plant facilitation on a mine tailings dump.** Markham, J., Young, I., and Renault, S. *Restoration Ecology* 19(5):569-571. 2011.

**178. © Planting depth and soil amendments affect growth of *Quercus virginiana* Mill.** Bryan, D. L., Arnold, M. A., Volder, A., and Watson, W. T. *Urban Forestry & Urban Greening* 10:127-132. 2011.

**179. © Reforestation of degraded Kermes oak shrublands with planted pines: effects of vegetation cover, species diversity and community structure.** Ganatsas, P., Tsitsoni, T., Tsakalidimi, M., and Zagas, T. *New Forests* 43:1-11. 2012.

**180. A root drench in unsaturated hydrogel solution reduced stress in transplanted *Eucalyptus pilularis* cuttings but was ineffective for seedlings: a glasshouse experiments.** Thomas, D. S. and Heagney, G. A. *Australian Forestry* 74(2):133-140. 2011.

**181. © Salvage logging versus the use of burnt wood as a nurse object to promote post-fire tree seedling establishment.** Castro, J., Allen, C. D., Molina-Morales, M., and Maranon-Jimenez, S. *Restoration Ecology* 19(4):537-544. 2011.

**182. © Short-term effects of mechanical and biological treatments on *Sorbus aucuparia* L. sprouting in mesic forests in Finland.** Hamberg, L., Vartiamaki, H., Malmivaara-Lamsa, M., and Lofstrom, I. *Scandinavian Journal of Forest Research* 26:505-514. 2011.

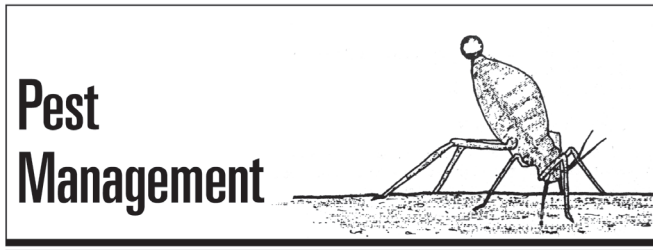
**183. © Species-specific barriers to tree regeneration in high elevation habitats of West Virginia.** Griscom, B., Griscom, H., and Deaco, S. *Restoration Ecology* 19(5):660-670. 2011.

**184. © Survival and early growth of mixed forest stands installed in a Mediterranean region: effects of site preparation intensity.** Fonseca, F., de Figueiredo, T., and Martins, A. *Forest Ecology and Management* 262:1905-1912. 2011.

**185. Tree shelters and weed control enhance growth and survival of natural blue oak seedlings.** McCreary, D. D., Tietje, W., Davy, J., and Larsen, R. *California Agriculture* 65(4):192-196. 2011.

**186. Use of painted hardwood seedlings in reforestation.** Pitt, D. *Tree Planters' Notes* 54(2):30-31. 2011.

**187. © Using hydrogel and clay to improve the water status of seedlings for dryland restoration.** Chirino, E., Vilagrosa, A., and Vallejo, V. R. *Plant and Soil* 344:99-110. 2011.



- 188.** © Activity of meadowfoam (*Limnanthes alba*) seed meal glucolimnanthin degradation products against soilborne pathogens. Zasada, I. A., Weiland, J. E., Reed, R. L., and Stevens, J. F. *Journal of Agricultural and Food Chemistry* 60:339-345. 2011.
- 189.** Biological control of *Fusarium solani* sp. *Dalbergiae*, the wilt pathogen of *Dalbergia sissoo*, by *Trichoderma viride* and *T. harzianum*. Basak, A. C. and Basak, S. R. *Journal of Tropical Forest Science* 23(4):460-466. 2011.
- 190.** A community-based stream monitoring program in western Washington for early detection of invasive *Phytophthora* spp. Elliott, M., Chastagner, G., Coats, K. P., and DeBauw, A. *Phytopathology* 101(6 Suppl):S247. 2011.
- 191.** © Composting of *Rhododendron* and bilberry wastes to contain spread of exotic plant pathogens *Phytophthora kernoviae* and *Phytophthora ramorum*. Noble, R., Dobrovin-Pennington, A., Pietravallo, S., and Henry, C. M. *Compost Science & Utilization* 19(4):219-225. 2011.
- 192.** © Control of soil-borne plant pathogens by microorganisms isolated from suppressive composts. Gullino, M. Pugliese M. and Garibaldi, A. *Phytopathology* 101:S66. 2011.
- 193.** © Diversity of *Phytophthora* species identified in a nursery irrigation runoff water containment basin of eastern Virginia. Hong, C., Richardson, P., Ghimire, S., and Kong, P. *Phytopathology* 101:S74. 2011.
- 194.** © Effect of growing medium water content on the biological control of root pathogens in a closed soilless system. Khalil, S. and Alsanis, B. W. *Journal of Horticultural Science & Biotechnology* 86(3):298-304. 2011.
- 195.** © Effect of steam and solarization treatments on pest control, strawberry yield, and economic returns relative to methyl bromide fumigation. Samtani, J. B., Gilbert, C., Weber, J. B., and Subbarao, K. V. *HortScience* 47(1):64-70. 2012.
- 196.** Helping growers adapt to changing rules on fumigants. O'Brien, D. *Agricultural Research* 59(6):8-19. 2011.
- 197.** Incidence of *Craesus castaneae* (Hymenoptera: Tenthredinidae) on chestnut seedlings planted in the Daniel Boone National Forest, Kentucky. Pinchot, C. C., Schlarbaum, S. E., Saxton, A. M., and Clark, S. L. *Journal of Entomological Science* 46(3):265-268. 2011.
- 198.** © Influence of isolation method on recovery of *Pythium* species from forest nursery soils in Oregon and Washington. Weiland, J. E. *Plant Disease* 95:547-553. 2011.
- 199.** © Integrated pest management strategies at Southern Woods Nursery. Hewson, E. *International Plant Propagators' Society, combined proceedings, 2010*, 60:185-190. 2011 .
- 200.** © Management of *Phytophthora ramorum*-infested nursery soil with *Trichoderma asperellum*. Widmer, L., Johnson-Brousseau, S. A., and Ghosh, S. *Phytopathology* 101(6 Suppl):8191. 2011.
- 201.** © Occurrence of the root rot pathogen, *Fusarium commune*, in forest nurseries of the midwestern and western United States. Kim, M.-S., Stewart, J. E., Dumroese, R. K., and Klopfenstein, N. B. *Journal of Phytopathology* 160:112-114. 2012.
- 202.** © Organics and biological control in propagation. Kutz-Troutman, A. *International Plant Propagators' Society, combined proceedings, 2010*, 60:201-205. 2011.
- 203.** © *Phytophthora ramorum* is a generalist plant pathogen with differences in virulence between isolates from infectious and dead-end hosts. Huberli, D. and Garbelotto, M. *Forest Pathology* 42:8-13. 2012.
- 204.** *Phytophthora ramorum*: Plant pathologists track where it came from and how it has managed to spread. Grunwald, N. *Digger* 55(9):41-45. 2011.

**205. © Pine weevil damage to Norway spruce seedlings: effects of nutrient-loading, soil inversion and physical protection during seedling establishment.** Wallertz, K. and Petersson, M. *Agricultural and Forest Entomology* 13:413-421. 2011.

**206. © Spread of *Phytophthora ramorum* to water, soil, and vegetation outside a nursery in Pierce County, Washington.** Chastagner, G., Coats, K., and Elliott, M. *Phytopathology* 101:832. 2011.

**207. © Survival of southern pine seedlings after inoculations with *Pythium* and cold storage in the presence of peat moss.** Jackson, D. P., Enebak, S. A., and South, D. B. *Forest Pathology* 42:44-51. 2012.

**208. © *Trichoderma atroviride* promotes growth and enhances systemic resistance to *Diplodia pinea* in radiata pine (*Pinus radiata*) seedlings.** Reglinski, T., Rodenburg, N., Taylor, J. T., and Northcott, G. L. *Forest Pathology* 42:75-78. 2012.

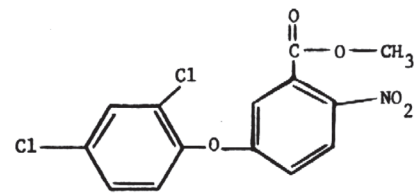
**209. The use of Proline (Prothioconazole) to control pitch canker, *Rhizoctonia foliage* blight, and fusiform rust in forest seedling nurseries and efforts to acquire registration.** Starkey, T. E. and Enebak, S. A. IN: National Proceedings: Forest and Conservation Nursery Associations -- 2010, p. 49-57. Riley, L.E., Haase, D.L. and Pinto, J.R. technical coordinators. USDA Forest Service, Rocky Mountain Research Station, Proceedings RMRS-P-65. 2011.

**210. © Use of real-time and nested PCR to detect *Phytophthora ramorum* in invested nursery container mixes and soils.** Colburn, G. and Jeffers, S. *Phytopathology*:101:S38. 2011.

**211. © Virulence of *Fusarium* root-disease pathogens (*Fusarium oxysporum* and *F. commune*) to Douglas-fir *Pseudotsuga menziesii*.** Stewart, J. E., Abdo, Z., Dumroese, R., and Klopfenstein, N. B. *Phytopathology* 101:S171. 2011.

**212. Western flower thrips: arm yourself with knowledge before battling this pest.** Graesch, J. and Wainwright-Evans, S. *Greenhouse Management* 31(11):60-63. 2011.

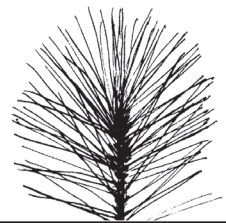
## Pesticides



**213. © ASI-261: a potential non-fumigant alternative to methyl bromide.** Roskopf, E., Kokalis-Burelle, N., He, Z., and Noling, J. *Phytopathology* 101:S156. 2011.

**214. Update on soil fumigation: MBr alternatives and reregistration decisions.** Enebak, S. A. IN: National Proceedings: Forest and Conservation Nursery Associations -- 2010, p. 40-45. Riley, L.E., Haase, D.L. and Pinto, J.R. technical coordinators. USDA Forest Service, Rocky Mountain Research Station, Proceedings RMRS-P-65. 2011.

## Seedling Physiology and Morphology



**215. © Allometry, nitrogen status, and carbon stable isotope composition of *Pinus ponderosa* seedlings in two growing media with contrasting nursery irrigation regimes.** Dumroese, R. K., Page-Dumroese, D. S., and Brown, R. E. *Canadian Journal of Forest Research* 41:1091-1101. 2011.

**216. © Assessment of assisted migration effects on spring bud flush in white spruce (*Picea glauca* [Moench] Voss) seedlings.** Lu, P. and Man, R. *Forestry Chronicle* 87(3):391-397. 2011.

**217. © Biomass allocation and foliage heteroblasty in hard pine species respond differentially to reduction in rooting volume.** Climent, J., Chambel, M. R., Pardos, M., and Lario, F. *European Journal of Forest Research* 130:841-850. 2011.

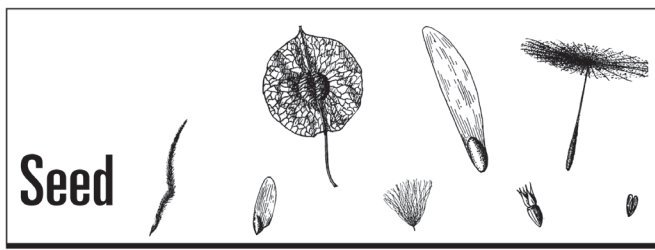
- 218. © Cavitation induced by a surfactant leads to a transient release of water stress and subsequent 'run away' embolism in Scots pine (*Pinus sylvestris*) seedlings.** Holtta, T., Juurola, E., Lindfors, L., and Porcar-Castell, A. *Journal of Experimental Botany* 63(2):1057-1067. 2012.
- 219. © Critical water stress levels in *Pinus patula* seedlings and their relation to measures of seedling morphology.** Rolando, C. A., Pammenter, N. W., and Little, K. M. *Southern Forests* 73(1):41-49. 2011.
- 220. © Development of tree vigor prediction method at an early stage based on stem hydraulic conductance of seedlings in citrus rootstocks.** Iwasaki, M., Fukamachi, H., Satoh, K., and Nesumi, H. *Journal of the Japanese Society of Horticultural Science* 80(4):390-395. 2011.
- 221. The earliest stages of tree growth: development, physiology and impacts of microclimate.** Johnson, D. M., McCulloh K. A. and Reinhardt, K. IN: *Size- and age-related changes in tree structure and function*, p. 65-87. F.C. Meinzer et al, editors. Springer Science. 2011.
- 222. © Effect of nitrogen fertilizer, root branch order and temperature on respiration and tissue N concentration of fine roots in *Larix gmelinii* and *Fraxinus mandshurica*.** Jia, S., Wang, Z., Li, X., Zhang, X., and Mclaughlin, N. B. *Tree Physiology* 31:718-726. 2011.
- 223. © Growth and frost hardening of European aspen and backcross hybrid aspen as influenced by water and nitrogen.** Nikula, S., Manninen, S., and Pulkkinen, P. *Annals of Forest Science* 68:737-745. 2011.
- 224. © Higher growth temperatures decreased net carbon assimilation and biomass accumulation of northern red oak seedlings near the southern limit of the species range.** Wertin, T. M., McGuire, M. A., and Teskey, R. O. *Tree Physiology* 31:1277-1288. 2011.
- 225. © Identification of water stress genes in *Pinus pinaster* Ait. by controlled progressive stress and suppression-subtractive hybridization.** Perdiguero, P., Collada C., del Carmen Barbero, M., and Casado, G. *Plant Physiology and Biochemistry* 50:44-53. 2012.
- 226. © Light acclimation at the end of the growing season in two broadleaved oak species.** Cano, F. J., Sanchez-Gomez, D., Gasco, A., and Rodriguez-Calcerrada, J. *Photosynthetica* 49(4):581-592. 2011.
- 227. © Morphological and physiological acclimation of *Quercus coccifera* L. seedlings to water availability and growing medium.** Verdaguer, D., Vilagran, J., Lloansi, S., and Fleck, I. *New Forests* 42:363-381. 2011.
- 228. Morphology targets: what do seedling morphological attributes tell us?** Pinto, J. R. IN: *National Proceedings: Forest and Conservation Nursery Associations -- 2010*, p. 74-79. Riley, L.E., Haase, D.L. and Pinto, J.R. technical coordinators. USDA Forest Service, Rocky Mountain Research Station, Proceedings RMRS-P-65. 2011.
- 229. © Relationships between frost hardiness, root growth potential, and photosynthesis of nursery-grown white spruce seedlings.** Carles, S., Lamhamedi, M. S., Stowe, D. C., and Bernier, P. Y. *Annals of Forest Science* 68:1303-1313. 2012.
- 230. © The role of phytochrome in stress tolerance.** Carvalho, R. F., Campos, M. L., and Azevedo, R. A. *Journal of Integrative Plant Biology* 53(12):920-929. 2011.
- 231. The role of plant water relations in achieving and maintaining the Target Seedling.** Mexal, J. G. and Khadduri, N. IN: *National Proceedings: Forest and Conservation Nursery Associations -- 2010*, p. 98-109. Riley, L.E., Haase, D.L. and Pinto, J.R. technical coordinators. USDA Forest Service, Rocky Mountain Research Station, Proceedings RMRS-P-65. 2011.
- 232. Root growth in young plants of *Pinus pinceana* Gordon in response to soil moisture.** Cordoba-Rodriguez, D., Vargas-Hernandez, J. J., Lopez-Upton, J., and Munoz-Orozco, A. *Agrociencia* 45:493-506. 2011.
- 233. © Seedling growth and water use of boreal conifers across different temperatures and near-flooded soil conditions.** Wolken, J. M., Landhausser, S. M., Lieffers, V. J., and Silins, U. *Canadian Journal of Forest Research* 41:2292-2300. 2011.
- 234. Seedling phenology and cold hardiness: moving targets.** Haase, D. L. IN: *National Proceedings: Forest and Conservation Nursery Associations -- 2010*, p. 121-127. Riley, L.E., Haase, D.L. and Pinto, J.R. technical coordinators. USDA Forest Service, Rocky Mountain Research Station, Proceedings RMRS-P-65. 2011.

**235. Seedling root targets.** Haase, D. L. IN: National Proceedings: Forest and Conservation Nursery Associations -- 2010, p. 80-82. Riley, L.E., Haase, D.L. and Pinto, J.R. technical coordinators. USDA Forest Service, Rocky Mountain Research Station, Proceedings RMRS-P-65. 2011.

**236. © Stomatal and non-stomatal limitations to photosynthesis in seedlings and saplings of Mediterranean species pre-conditioned and aged in nurseries: different response to water stress.** Varone, L., Ribas-Carbo, M., Cardona, C., and Galle, A. Environmental and Experimental Botany 75:235-247. 2012.

**237. The Target Plant concept - a history and brief overview.** Landis, T. D. IN: National Proceedings: Forest and Conservation Nursery Associations -- 2010, p. 61-66. Riley, L.E., Haase, D.L. and Pinto, J.R. technical coordinators. USDA Forest Service, Rocky Mountain Research Station, Proceedings RMRS-P-65. 2011.

**238. Target seedling strategies for intensively managed plantations in the Oregon Coast Range.** Wall, M. IN: National Proceedings: Forest and Conservation Nursery Associations -- 2010, p. 150-156. Riley, L.E., Haase, D.L. and Pinto, J.R. technical coordinators. USDA Forest Service, Rocky Mountain Research Station, Proceedings RMRS-P-65. 2011.



**239. Challenges facing the forest industry in relation to seed dormancy and seed quality.** Stoehr, M. U. and El-Kassaby, Y. A. IN: Seed dormancy: methods and protocols, p. 3-15. A.R. Kermode, editor. Springer Science. 2011.

**240. Eyeing emergence: modified treatments for terminating dormancy of conifer seeds.** Feurtado, J. A. and Kermode, A. R. IN: Seed dormancy: methods and protocols, p. 53-64. A.R. Kermode, editor. Springer Science. 2011.

**241. © Fitness consequences of seed size in the valley oak *Quercus lobata* Nee (Fagaceae).** Sage, R. D., Koenig, W. D., and McLaughlin, B. C. Annals of Forest Science 68:477-484. 2011.

**242. © Improving germination of red elm (*Ulmus rubra*) seeds with gibberellic acid.** Morales, B., Boyer, C., Barden, C., and Griffin, J. International Plant Propagators' Society, combined proceedings, 2010, 60:535-537. 2011.

**243. © Morphological characteristics of seeds with physical dormancy.** Geneve, R. L. International Plant Propagators' Society, combined proceedings, 2010, 60:610-613. 2011.

**244. © Patterns of exploitation of annually varying *Pinus sylvestris* cone crops by seed-eaters of differing dispersal ability.** Summers, R. W. Ecology 34:723-728. 2011.

**245. © Plant-derived smoke: old technology with possibilities for economic applications in agriculture and horticulture.** Kulkarni, M. G., Light, M. E., and Van Staden, J. South African Journal of Botany 77:972-979. 2011.

**246. Producing the Target Seed: seed collection, treatment, and storage.** Karrfalt, R. P. IN: National Proceedings: Forest and Conservation Nursery Associations -- 2010, p. 67-73. Riley, L.E., Haase, D.L. and Pinto, J.R. technical coordinators. USDA Forest Service, Rocky Mountain Research Station, Proceedings RMRS-P-65. 2011.

**247. © Seed-coat anatomy and proanthocyanidins contribute to the dormancy of *Rubus* seed.** Wada, S., Kennedy, J. A., and Reed, B. M. Scientia Horticulturae 130:762-768. 2011.

**248. Seed dormancy in alpine species.** Schwienbacher, E., Navarro-Cano, J. A., Neuner, G., and Erschbamer, B. Flora 206:845-856. 2011.

**249. Seed maturation, flower receptivity, and selfing in sweetgum (*Liquidambar styraciflua* L.).** Tauer, P. K. and Tauer, C. G. Tree Planters' Notes 54(1):18-23. 2011.

**250. Standardizing seed dormancy research.**

Hilhorst, H. W. M. IN: Seed dormancy: methods and protocols, p. 43-52. A.R. Kermode, editor. Springer Science. 2011.

**251. Vermicompost leachate improves seedling emergence and vigour of aged seeds of commercially grown *Eucalyptus* species.**

Kandari, L. S., Kulkarni, M. G., and Van Staden, J. South Africa Association of Botanists, Conference Abstracts. 2011.



**252. © Adsorption of phosphate by goethite and zeolite: effects of humic substances from green waste compost.** Gu, Z., Buyuksonmez, F., Gajaraj, S., and Beighley, R. E. Compost Science & Utilization 19(3):197-204. 2011.

**253. © Annual crop growth in substrates amended with sweetgum, hickory, and red cedar.** Murphy, A.-M., Gilliam, C. H., Fain, G. B., and Sibley, J. L. International Plant Propagators' Society, combined proceedings, 2010, 60:581-588. 2011.

**254. © Biochar adsorbed ammonia is bioavailable.** Taghizadeh-Toosi, A., Clough, T. J., Sherlock, R. R., and Condon, L. M. Plant and Soil 350:57-69. 2012.

**255. Carefully unraveling the intricacies of biochar.** Perry, A. Agricultural Research 59(10):4-8. 2011.

**256. © Experiences in development of green compost as a peat replacement material.** Rainbow, A. International Plant Propagators' Society, combined proceedings, 2010, 60:499-502. 2011.

**257. © Greenhouse solarization - an alternative to chemical fumigants.** Drahn, S. R. and Versolato, J.-M. International Plant Propagators' Society, combined proceedings, 2010, 60:398-400. 2011.

**258. © Growth of *Pistacia chinensis* in a red cedar-amended substrate.** Starr, Z. Boyer C. International

Plant Propagators' Society, combined proceedings, 2010, 60:602-606. 2011.

**259. © Influence of pumice and plant roots on substrate physical properties over time.** Altland, J. E., Owen, J. S., Jr., and Gabriel, M. Z. HortTechnology 21(5):554-557. 2011.

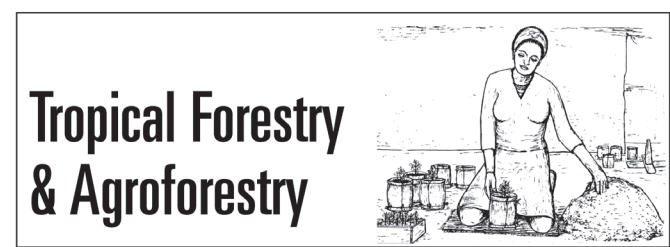
**260. © Influence on polychlorinated biphenyls content using three types of biowastes as fertilizers in agricultural soils.** Antolin, J. M., Bascones, M. S., Fernandez, V. P., and Sanchez, C. T. B. Compost Science & Utilization 19(3):205-213. 2011.

**261. Long-term effect of organic and mineral fertilization on soil physical properties under greenhouse and outdoor management practices.** Herencia, J. F., Garcia-Galavis, P. A., and Maqueda, C. Pedosphere 21(4):443-453. 2011.

**262. © Pine bark substrates amended with parboiled rice hulls: physical properties and growth of container-grown *Spirea* during long-term nursery production.** Gomez, C. and Robbins, J. HortScience 46(5):784-790. 2011.

**263. © Plant performance and nutrient losses during containerized landscape shrub production using composted dairy manure solids as a peat substitute in substrate.** Shober, A. L., Wiese, C., Denny, G. C., and Stanley, C. D. HortTechnology 21(2):240-245. 2011.

**264. © Processed corncob as an alternative to perlite in the production of greenhouse grown annuals.** Weldon, T. L., Fain, G. B., Sibley, J. L., and Gilliam, C. H. International Plant Propagators' Society, combined proceedings, 2010, 60:531-534. 2011.



**265. © Assessing the status of three mangrove species restored by the local community in the cyclone-affected area of the Ayeyarwady Delta,**

**Myanmar.** Aung, T. T., Than, M. M., Katsuhiko, O., and Yukira, M. *Wetlands Ecology and Management* 19:195-208. 2011.

**266. © Away-field advantage: mangrove seedlings grow best in litter from other mangrove species.** Chapman, S. K. and Feller, I. C. *Oikos* 120:1880-1888. 2011.

**267. © Direct seeding of late-successional trees to restore tropical montane forest.** Cole, R. J., Holl, K. D., Keene, C. L., and Zahawi, R. A. *Forest Ecology and Management* 261:1590-1597. 2011.

**268. © Early growth and survival of 49 tropical tree species across sites differing in soil fertility and rainfall in Panama.** van Breugel, M., Hall, J. S., Craven, D. J., and Gregoire, T. G. *Forest Ecology and Management* 261:1580-1589. 2011.

**269. © Effect of different pre-sowing seed treatments on the germination of *Leucaena leucocephala* (Lam.) and *Acacia farnesiana* (L.).** Tadros, M. J., Samarah, N. H., and Alqudah, A. M. *New Forests* 42:397-407. 2011.

**270. Effect of neem (*Azadiracta indica*) aqueous extract on *Casuarina equisetifolia* seed germination, growth of *Frankia* and some rhizospheric microorganisms.** Sayed, W. F., Salem, W. M., and Ali, M. S. *African Journal of Microbiology* 5(14):1874-1880. 2011.

**271. Effects of fruit maturity and pre-sowing water treatment on germinative performance of *Gmelina arborea* seeds.** Adebisi, M. A., Adekunle, M. F., and Odebiyi, O. A. *Journal of Tropical Forest Science* 23(4):371-378. 2011.

**272. Effects of sowing date and biopesticide on density of white grub *Holotrichia serrata* in a teak nursery.** Meshram, P. B. and Homkar, U. *Journal of Tropical Forest Science* 23(4):358-362. 2011.

**273. The impact of climate change on the growth of tropical agroforestry tree seedlings.** Esmail, S. and Oelbermann, M. *Agroforestry Systems* 83:235-244. 2011.

**274. © Optimizing nursery and plantation methods to grow *Cedrela odorata* seedlings in tropical dry**

**agroecosystems.** Andres, P., Salgado, C., and Espelta, J. M. *Agroforestry Systems* 83:225-234. 2011.

**275. Overcoming dormancy in macaw palm diaspores, a tropical species with potential for use as bio-fuel.** Ribeiro, L. M., Souza, P. P., Rodrigues, A. G. Jr., and Oliveira, T. G. S. *Seed Science & Technology* 39:303-317. 2011.

**276. © Planting seedlings in tree islands versus plantations as a large-scale tropical forest restoration strategy.** Holl, K. D., Zahawi, R. A., Cole, R. J., Ostertag, R., and Cordell, S. *Restoration Ecology* 19(4):470-479. 2011.

**277. © Tree plantations on farms: evaluating growth and potential for success.** Hall, J. S., Love, B. E., Garen, E. J., and Slusser, J. L. *Forest Ecology and Management* 261:1675-1683. 2011.

**278. © Validation of quality tests for forest seed species.** Garcia de Santana, D., Wielewicki, A. P., and Salomao, A. N. *Seed Science Research* 22:S74-S79. 2012.

**279. © Utilization of family genetic variability to improve the rooting ability of white spruce (*Picea glauca*) cuttings.** Gravel-Grenier, J., Lamhamedi, M. S., Beaulieu, J., and Carles, S. *Canadian Journal of Forest Research* 41:1308-1318. 2011.

## Vegetative Propagation and Tissue Culture



**280. © Plant tissue culture: challenging microorganisms.** van Asch, M. *International Plant Propagators' Society, combined proceedings, 2010*, 60:77-80. 2011.

**281. © Propagation of cuttings using foliar-applied indolebutyric acid in aqueous solutions at or after sticking.** Kroin, J. *International Plant Propagators' Society, combined proceedings, 2010*, 60:369-377. 2011.



**282. © Some fundamental differences separating rooted cuttings and seedlings.** Barnes, H. W. International Plant Propagators' Society, combined proceedings, 2010, 60:416-421. 2011.

**283. Tissue culture of conifer seedlings -- 20 years on: viewed through the lens of seedling quality.** Grossnickle, S. C. IN: National Proceedings: Forest and Conservation Nursery Associations -- 2010, p. 139-146. Riley, L.E., Haase, D.L. and Pinto, J.R. technical coordinators. USDA Forest Service, Rocky Mountain Research Station, Proceedings RMRS-P-65. 2011.

**284. © The use of non-dormant rods as planting material: a new approach to establishing willow for environmental applications.** Teodorescu, T. I., Guidi, W., and Labrecque, M. Ecological Engineering 37:1430-1433. 2011.

**285. © Vegetative reproduction capacities of floodplain willows — cutting response to competition and biomass loss.** Radtke, A., Mosner, E., and Leyer, I. Plant Biology 14:257-264. 2012.



**286. © CCROP-A web-based decision tool enhances irrigation and nutrient management decisions.** Yeager, T., Million, J., Ritchie, J., and Larsen, C. Hortscience 45(8 Suppl). 2011.

**287. © Design and monitoring of horizontal subsurface-flow constructed wetlands for treating nursery leachates.** Narvaez, L., Cunill, C., Caceres, R., and Marfa, O. Bioresource Technology 102:6414-6420. 2011.

**288. © Growing woody plants with limited water resources.** Brun, C. A. International Plant Propagators' Society, combined proceedings, 2010, 60:260-262. 2011.

**289. Irrigation filtration 101.** Ahnert, F. American Nurseryman, Nov. 2011, p. 10-13. 2011.

**290. © Phosphorus retention in lab and field-scale subsurface-flow wetlands treating plant nursery runoff.** White, S. A., Taylor, M. D., Albano, J. P., Whitwell, T., and Klaine, S. J. Ecological Engineering 37:1968-1976. 2011.

**291. Pipe helps boost yields and reduce nitrogen discharge.** Cooper, S. Land and Water 22(3):31-33. 2011.

**292. © Subirrigation for production of native plants in nurseries — concepts, current knowledge, and implementation.** Schmal, J. L., Dumroese, R. K., Davis, A. S., and Pinto, J. R. Native Plants Journal 12(2):81-93. 2011.

**293. Water supply and quality: the basics.** Bilderback, T., Dole, J., and Sneed, R. American Nurseryman June 2011, p. 12-16, 18-19. 2011.

**294. Water treatment.** Konjoian, P. Greenhouse Management 31(11):67-68. 2011.

**295. What's in your water?** Fisher, P., Meador, D., Huang, J., and Argo, W. Greenhouse Management 31(9):34-39. 2011.

**296. What's in your water: biological water quality.** Fisher, P., Meador, D., Parke, J., Wick, R., and Argo, W. Greenhouse Management 31(10):40-42, 72-73. 2011.

**297. What's in your water: physical water quality and filtration.** Fisher, P., Haskell, D., Meador, D., and Mohammad-Pour, G. Greenhouse Management 31(11):26-30. 2011.

**298. What's in your water: sanitizing agent concentration and demand.** Huang, J., Fisher, P., Meador, D., and Argo, W. Greenhouse Management 31(12):24-27. 2011.

**SO. Irrigation.** Stetson, L. E. and Mecham, B. Q. Irrigation Association. 6th ed. 2011. 1089 p. Order from Irrigation Association (details on page 23).

**299. © Differential response of liverwort (*Marchantia polymorpha*) tissue to POST-applied quinoclamine.** Altland, J. E., Wehtje, G., Sibley, J., and Miller, M. E. *Weed Technology* 25:580-585. 2011.

**300. © Integration of vinegar for in-row weed control in transplanted bell pepper and broccoli.** Evans, G. J., Bellinder, R. R., and Hahn, R. R. *Weed Technology* 25:459-465. 2011.



**301. © Light-activated, sensor-controlled sprayer provides effective postemergence control of broadleaf weeds in fallow.** Riar, D. S., Ball, D. A., Yenish, J. P., and Burke, I. C. *Weed Technology* 25:447-453. 2011.

**302. © Liverwort control using novel techniques.** England, J. *International Plant Propagators' Society, combined proceedings*, 2010, 60:465-470. 2011.

**303. © Manuka oil, a natural herbicide with preemergence activity.** Dayan, F. E., Howell, J., Marais, J. P., and Ferreira, D. *Weed Science* 59:464-469. 2011.

**304. © Mugwort control in an abandoned nursery using herbicides that mimic indole-3-acetic acid.** Koepke-Hill, R. M., Armel, G. R., Klingeman, W. E., and Halcomb, M. A. *HortTechnology* 21(5):558-562. 2011.

**305. Using essential oils to control moss and liverwort in containers.** Khadduri, N. IN: *National Proceedings: Forest and Conservation Nursery Associations -- 2010*, p. 133-138. Riley, L.E., Haase, D.L. and Pinto, J.R. technical coordinators. USDA Forest Service, Rocky Mountain Research Station, Proceedings RMRS-P-65. 2011.

**306. © Vegetative reproduction potential of common purslane (*Portulaca oleracea*).** Proctor, C. A., Gaussoin, R. E., and Reicher, Z. J. *Weed Technology* 25:694-697. 2011.

<b>Contact Information for Reforestation, Nurseries, and Genetic Resources (RNGR) Team</b> <b><a href="http://www.rngr.net">http://www.rngr.net</a></b>		
<b>Technology Transfer Services</b>	<b>Area of Responsibility</b>	<b>Who to Contact</b>
<ul style="list-style-type: none"> <li>• National Nursery Specialist</li> <li>• Forest Nursery Notes</li> <li>• Container Tree Nursery Manual</li> <li>• Native Plants Journal</li> </ul>	US and International	<p><b>Kas Dumroese</b>            USDA Forest Service            1221 S. Main Street            Moscow, ID 83843            TEL: 208.883.2324 • FAX: 208.883.2318            E-Mail: kdumroese@fs.fed.us</p>
<ul style="list-style-type: none"> <li>• Technical Assistance about Forest, Conservation, and Native Plant Nurseries</li> <li>• Tree Planters' Notes</li> <li>• Proceedings of Nursery Meetings</li> </ul>	Western US	<p><b>Diane L. Haase</b>            USDA Forest Service            PO Box 3623            Portland, OR 97208            TEL: 503.808.2349 • FAX: 503.808.2339            E-Mail: dlhaase@fs.fed.us</p>
<ul style="list-style-type: none"> <li>• Technical Assistance about Tree Improvement and Genetic Resources</li> <li>• Technical Assistance about Forest and Conservation Nurseries</li> </ul>	Southeastern US and International	<p><b>George Hernandez</b>            USDA Forest Service            1720 Peachtree Road NW            Atlanta, GA 30367            TEL: 404.347.3554 • FAX: 404.347.2776            E-Mail: ghernandez@fs.fed.us</p>
<ul style="list-style-type: none"> <li>• Technical Assistance about Tree and Shrub Seed</li> </ul>	US and International	<p><b>Bob Karrfalt</b>            National Seed Laboratory            5675 Riggins Mill Road            Dry Branch, GA 31020            TEL: 478.751.4134 • FAX: 478.751.4135            E-Mail: rkarrfalt@fs.fed.us</p>
<ul style="list-style-type: none"> <li>• Technical Assistance about Tree Improvement and Genetic Resources</li> <li>• Technical Assistance about Forest, Conservation, and Native Plant Nurseries</li> </ul>	Northeastern US and International	<p><b>Ron Overton</b>            Regeneration Specialist            USDA Forest Service            Purdue University            715 West State Street            West Lafayette, IN 47907            TEL: 765.496.6417 • FAX: 765.494.9461            E-Mail: roverton@fs.fed.us</p>
<ul style="list-style-type: none"> <li>• Technical Assistance to Native Americans regarding Nurseries, Reforestation, and Restoration</li> <li>• Proceedings of Nursery Meetings</li> </ul>	US and International	<p><b>Jeremy Pinto</b>            USDA Forest Service            1221 S. Main Street            Moscow, ID 83843            TEL: 208.883.2352 • FAX: 208.883.2318            E-Mail: jpinto@fs.fed.us</p>



# Literature Order and Mailing List Update Form Winter 2012

Please fill out a separate order form for each person receiving FNN.  
For items that require a copyright fee, you will receive the title page with abstract and ordering instructions if you want the entire article. Fax or mail this form to:

**Forest Nursery Notes**  
J.H. Stone Nursery  
2606 Old Stage Rd.  
Central Point, OR 97502  
FAX: 541.858.6110  
E-mail: rewatson@fs.fed.us

Name:..... Position:.....

Department:..... Nursery or Company:.....

Mailing address:.....

Street Address:.....

City:..... State or Province:.....

Country:..... Zip or Postal Code:.....

Telephone:..... FAX:.....

E-mail:..... Website:.....

= Yes, please send me a CD with all the articles in the New Nursery Literature Section

= Yes, please keep me listed on the FNN mailing list.





**U.S. DEPARTMENT  
OF AGRICULTURE**

FOREST SERVICE

J. HERBERT STONE NURSERY  
2606 OLD STAGE ROAD  
CENTRAL POINT, OR 97502

**OFFICIAL BUSINESS**

PENALTY FOR PRIVATE  
USE TO AVOID PAYMENT  
OF POSTAGE \$300

**FIRST CLASS  
U.S. POSTAGE PAID  
LINCOLN, NE  
PERMIT NO. G-40**