



New Nursery Literature

Copies of the following journal articles or publications are free and can be ordered using the Literature Order Form on the last page of this section. Just write in the appropriate number or letter on the form and return it to us. Note that there are three restrictions:

- 1. Limit in Number of Free Articles:** In an effort to reduce mailing costs, we are limiting the number of free articles that can be ordered through FNN literature service. All subscribers will be restricted to 25 free articles per issue. **Electronic Adobe PDF Copies** are now available. The copyright restriction still applies, but the 25 article limitation does not. Instructions for accessing electronic copies are included on the Literature Order Form.
- 2. Copyrighted Material.** Items with © are copyrighted and require a fee for each copy, so only the title page and abstract will be provided through this service. If you want the entire article, then you can order a copy from a library service.
- 3. Special Orders (SO).** Special orders are books or other publications that, because of their size or cost, require special handling. For some, the Forest Service has procured copies for free distribution, but others will have to be purchased. Prices and ordering instructions are given following each listing in the New Nursery Literature section.

Bareroot Production

- 1. © Effects of seedbed density on one-year-old *Fraxinus angustifolia* seedling characteristics and out-planting performance.** Cicek, E., Cicek, N., and Bilir, N. *New Forests* 33(1):81-91. 2007.
- 2. An evolution of bareroot cultural practices at J. Herbert Stone Nursery.** Riley, L. E., Steinfeld, D., and Feigner, S. IN: *National proceedings: forest and conservation nursery associations 2005*. Riley, L.E.; Dumroese, R.K.; Landis, T.D., technical coordinators. USDA Forest Service, Rocky Mountain Research Station, *Proceedings RMRS-P-43*, p.51-60. 2006.
- 3. Stock quality of black walnut (*Juglans nigra*) seedlings as affected by half-sib seed source and nursery sowing density.** Jacobs, D. F., Woeste, K. E., Wilson, B. C., and McKenna, J. R. *Acta Horticulturae* 705:375-381. 2006.

Business Management

- 4. Designing and implementing a new nursery computer program at George O. White State Nursery, Missouri Department of Conservation.** Diram, D. IN: *National proceedings: forest and conservation nursery associations 2005*. Riley, L.E.; Dumroese, R.K.; Landis, T.D., technical coordinators. USDA Forest Service, Rocky Mountain Research Station, *Proceedings RMRS-P-43*, p.134-136. 2006.
- 5. Experience of applying lean manufacturing on a container nursery.** Dowling, G. *International Plant Propagators' Society, combined proceedings 2005*, 55:288-290. 2006. Lean manufacturing is about improving efficiency and productivity and decreasing waste in the workplace. By following 7 sequential improvement steps, a business can save time and costs in all areas of activity.
- 6. How to develop an effective safety committee.** Mauschaugh, A. *Greenhouse Management and Production* 27(1):99-100, 102. 2006.
- 7. Specialisation -- advantages and disadvantages compared.** Bingham, P. *International Plant Propagators' Society, combined proceedings 2005*, 55:79-81.

2006. One of the most significant changes in the nursery trade is the trend toward specialisation in one form or other -- species, pot sizes, growing media, customer base, etc.

8. Summer hazards. Mauschbaugh, A. J. *American Nurseryman* 204(4):30-32, 34-35. 2006. Protect your employees from summer heat and pest dangers with these pointers.

9. Use of cost analysis to improve nursery profitability. George, W. *International Plant Propagators' Society, combined proceedings 2005*, 55:281-287. 2006.

Container Production



10. Companies market biodegradable pots to growers, retailers and consumers. Rodda, K. *Greenhouse Management and Production* 26(9):35-36, 38, 40, 42. 2006.

11. © Enhancement of photosynthesis and growth of tomato seedlings by forced ventilation within the canopy. Shibuya, T., Tsuruyama, J., Kitaya, Y., and Kiyota, M. *Scientia Horticulturae* 109:218-222. 2006.

12. Environmentally sustainable production systems for producing ornamental plants. Bunker, J. *International Plant Propagators' Society, combined proceedings 2005*, 55:41-47. 2006.

13. Growing plants in hot climates. Chin, R. *International Plant Propagators' Society, combined proceedings 2005*, 55:142-147. 2006.

14. © Impacts of nursery cultural treatments on stress tolerance in 1+0 container white spruce (*Picea glauca* [Moench] Voss) seedlings for summer-planting. Tan, W. *New Forests* 33(1):93-107. 2007.

15. Panel discussion: container stock and why? Friedlander, R. IN: *National proceedings: forest and conservation nursery associations 2005*. Riley, L.E.; Dumroese, R.K.; Landis, T.D., technical coordinators. USDA Forest Service, Rocky Mountain Research Station, *Proceedings RMRS-P-43*, p.68-72. 2006.

16. Panel discussion: Red Lake Forestry greenhouse operations Whitefeather-Spears, G. IN: *National proceedings: forest and conservation nursery associations 2005*. Riley, L.E.; Dumroese, R.K.; Landis, T.D., technical coordinators. USDA Forest Service, Rocky Moun-

tain Research Station, *Proceedings RMRS-P-43*, p.82-83. 2006.

17. Panel discussion: Trends in container types.

Stuewe, E. IN: *National proceedings: forest and conservation nursery associations 2005*. Riley, L.E.; Dumroese, R.K.; Landis, T.D., technical coordinators. USDA Forest Service, Rocky Mountain Research Station, *Proceedings RMRS-P-43*, p.73-81. 2006.

18. Run for cover! What's covering your greenhouse and how it is affecting seedling growth? Pinto, J. R., Dumroese, R. K., and Marshall, J. D. IN: *National proceedings: forest and conservation nursery associations 2005*. Riley, L.E.; Dumroese, R.K.; Landis, T.D., technical coordinators. USDA Forest Service, Rocky Mountain Research Station, *Proceedings RMRS-P-43*, p.44-50. 2006.

19. Subirrigation reduces water use, nitrogen loss, and moss growth in a container nursery. Dumroese, R. K., Pinto, J. R., Jacobs, D. F., Davis, A. S., and Horiuchi, B. *Native Plants Journal* 7(3):253-261. 2006.

Diverse Species



20. Antelope bitterbrush reestablishment: a case study of plant size and browse protection effects. Johnson, G. R. and Okula, J. P. *Native Plants Journal* 7(2):125-133. 2006.

21. © Can a post-harvest ripening treatment extend the longevity of *Rhododendron* L. seeds? Hay, F., Klin, J., and Probert, R. *Scientia Horticulturae* 111(1):80-83. 2006.

22. Collecting tapertip onion (*Allium acuminatum* Hook.) in the Great Basin using traditional and GIS methods. Adair, R., Johnson, R. C., Hellier, B., and Kaiser, W. *Native Plants Journal* 7(2):141-148. 2006.

23. The effect of gibberellic acid, potassium nitrate, and cold stratification on the germination of golden-seal (*Hydrastis canadensis*) seed. Follett, J. M., Douglas, J. A., and Littler, R. A. *International Plant Propagators' Society, combined proceedings 2005*, 55:165-170. 2006.

24. © Effect of light on seed germination of eight wetland *Carex* species. Kettenring, K. M., Gardner, G., and Galatowitsch, S. M. *Annals of Botany* 98(4):869-874. 2006.

- 25. Establishment of wetland ground flora: an analysis of planting methodologies.** Ireland, S. N., Hedges, P. D., and Fermor, P. M. IN: Natural and constructed wetlands - nutrients, metals and management, p. 91-111. J. Vymazal, ed. Backhuys Publishers. 2005.
- 26. Ethylene improves germination of arrow-leaved balsamroot seeds.** Chambers, K. J., Bowen, P., Turner, N. J., and Keller, P. C. *Native Plants Journal* 7(2):108-113. 2006.
- 27. Genetic fingerprinting of goldenseal, *Hydrastic canadensis*, using AFLP markers: an update.** Zhou, S. and Sauve, R. J. *Native Plants Journal* 7(3):284-285. 2006.
- 28. Growing shrubs at the George O. White State Forest Nursery: what has worked and what has not.** Hoss, G. IN: National proceedings: forest and conservation nursery associations 2005. Riley, L.E.; Dumroese, R.K.; Landis, T.D., technical coordinators. USDA Forest Service, Rocky Mountain Research Station, Proceedings RMRS-P-43, p.111-114. 2006.
- 29. Hand-pollination of *Cardamine californica* improves seed set.** Ariyoshi, K., Magnaghi, E., and Frey, M. *Native Plants Journal* 7(3):249-252. 2006.
- 30. © Improving germination in windmillgrass ecotypes.** Herrera-C., F., Ocumpaugh, W. R., Ortega-S., J. A., Lloyd-Reilley, J., Rasumuusen, G. A., and Maher, S. *Rangeland Ecology and Management* 59(6):660-663. 2006.
- 31. Inadvertent selection in the propagation of native plants: a cautionary note.** Dunwiddie, P. and Delvin, E. *Native Plants Journal* 7(2):121-124. 2006.
- 32. Meadow restoration in the Sawtooth National Recreation Area in southern Idaho.** Sloan, J. IN: National proceedings: forest and conservation nursery associations 2005. Riley, L.E.; Dumroese, R.K.; Landis, T. D., technical coordinators. USDA Forest Service, Rocky Mountain Research Station, Proceedings RMRS-P-43, p.21-26. 2006.
- 33. *Mespilus canescens* a newly discovered species: propagation by grafting onto *Crataegus*.** Barnes, H. W. International Plant Propagators' Society, combined proceedings 2005, 55:449-451. 2006.
- 34. Modifications improve seed harvest with the Woodward flail-vac seed stripper.** Kees, G. *Native Plants Journal* 7(2):149-150. 2006.
- 35. Panel discussion: Stocktypes for outplanting in Zion National Park.** Decker, C. IN: National proceedings: forest and conservation nursery associations 2005. Riley, L.E.; Dumroese, R.K.; Landis, T.D., technical coordinators. USDA Forest Service, Rocky Mountain Research Station, Proceedings RMRS-P-43, p.61-67. 2006.
- 36. © Passive establishment of vegetation in constructed wetlands in agricultural settings: a case study.** Luckeydoo, L. M., Fausey, N. R., Davis, C. B., Regnier, E., and Brown, L. C. *Ohio Journal of Science* 106(4):164-168. 2006.
- 37. © Population and environmental effects on seed production, germination, and seedling vigor in western wheatgrass (*Pascopyrum smithii* [Rydb.] A. Love).** Waldron, B. L., Robins, J. G., Jensen, K. B., Palazzo, A. J., Cary, T. J., and Berdahl, J. D. *Crop Science* 46:2503-2508. 2006.
- 38. © Production, losses, and germination of *Ceanothus fendleri* seeds in an Arizona ponderosa pine forest.** Huffman, D. W. *Western North American Naturalist* 66(3):365-373. 2006.
- 39. Propagating native plants for the Hopi Nation.** Landis, T. D., Dreesen, D. R., Pinto, J. R., and Dumroese, R. K. International Plant Propagators' Society, combined proceedings 2005, 55:520-523. 2006.
- 40. Propagation and cultivation of *Arctostaphylos* in relation to the environment in its natural habitat in California, U.S.A.** Hart, L. International Plant Propagators' Society, combined proceedings 2005, 55:291-295. 2006.
- 41. Propagation of *Osmanthus armatus* from hardwood cuttings.** Barnes, H. W. International Plant Propagators' Society, combined proceedings 2005, 55:448-449. 2006.
- 42. Propagation of *Sarracenia* species.** Heffner, R. A. International Plant Propagators' Society, combined proceedings 2005, 55:356-360. 2006.
- 43. The propagation of uluhe fern (*Dicranopteris linearis*): vegetative versus spores.** Romanchak, E. A., Criley, R. A., and Sugii, N. International Plant Propagators' Society, combined proceedings 2005, 55:517-519. 2006.
- 44. Propagation protocol for *Jacquemontia reclinata* House, a federally endangered species of south Florida.** Roncal, J., Fisher, J. B., Wright, S. J., Frances, A.,

Griffin, K., Maschinski, J., and Fidelibus, M. W. *Native Plants Journal* 7(3):301-306. 2006.

45. Propagation protocol for spicebush, *Lindera benzoin*. Hoss, G. *Native Plants Journal* 7(2):134-136. 2006.

46. Revegetation of reconstructed reaches of the Provo River, Heber Valley, Utah. Rice, J. A. IN: National proceedings: forest and conservation nursery associations 2005. Riley, L.E.; Dumroese, R.K.; Landis, T. D., technical coordinators. USDA Forest Service, Rocky Mountain Research Station, Proceedings RMRS-P-43, p.27-34. 2006.

47. Revegetation strategies and technologies for restoration of aridic saltcedar (*Tamarix* spp.) infestation sites. Lair, K. D. IN: National proceedings: forest and conservation nursery associations 2005. Riley, L.E.; Dumroese, R.K.; Landis, T.D., technical coordinators. USDA Forest Service, Rocky Mountain Research Station, Proceedings RMRS-P-43, p.10-20. 2006.

48. Selection of mycorrhizal fungi for California native plants. Corkidi, L., Evans, M., and Bohn, J. *International Plant Propagators' Society, combined proceedings* 2005, 55:489. 2006.

49. Softwood cutting propagation of native Lauraceae (*Lindera benzoin* and *Sassafras albidum*) as alternatives to invasive horticulture plants. Sicuranza, J., Castrataro, N., Johnson, B., and Maynard, B. *International Plant Propagators' Society, combined proceedings* 2005, 55:415-417. 2006.

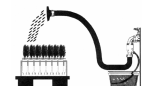
50. Strategies for seed propagation of native forbs. Meyer, S. E. IN: National proceedings: forest and conservation nursery associations 2005. Riley, L.E.; Dumroese, R.K.; Landis, T.D., technical coordinators. USDA Forest Service, Rocky Mountain Research Station, Proceedings RMRS-P-43, p.3-9. 2006.

51. © Techniques for enhancing saltgrass seed germination and establishment. Qian, Y. L., Cosenza, J. A., Wilhelm, S. J., and Christensen, D. *Crop Science* 46(6):2613-2616. 2006.

52. Tolerance of hardy ferns to selected preemergence herbicides/ Fain, G. B., Gilliam, C. H., and Keever, G. J. *HortTechnology* 16(4):605-609. 2006.

53. Using compost for container production of ornamental wetland and flatwood species native to Florida. Wilson, S. B. and Stoffella, P. J. *Native Plants Journal* 7(3):293-300. 2006.

Fertilization and Nutrition



54. © Calcium addition at the Hubbard Brook Experimental Forest reduced winter injury to red spruce in a high-injury year. Hawley, G. J., Schaberg, P. G., Eagar, C., and Borer, C. H. *Canadian Journal of Forest Research* 36(10):2544-2549. 2006.

55. © Developmental disorders in buds and needles of mature Norway spruce, *Picea abies* (L.) Karst., in relation to needle boron concentrations. Sutinen, S., Vuorinen, M., and Rikala, R. *Trees* 20:559-570. 2006.

56. Exponential nutrient loading as a means to optimize bareroot nursery fertility of oak species. Birge, Z. K. D., Jacobs, D. F., and Salifu, F. K. IN: National proceedings: forest and conservation nursery associations 2005. Riley, L.E.; Dumroese, R.K.; Landis, T.D., technical coordinators. USDA Forest Service, Rocky Mountain Research Station, Proceedings RMRS-P-43, p.147-151. 2006.

57. Leaching of nitrogen from upland forest-regeneration sites into wetland areas. Kubin, E. IN: *Environmental role of wetlands in headwaters*, p. 887-94. J. Krecek and M. Haigh, eds. Springer. 2006.

58. MIYOBI: a new fertilizer containing abscisic acid. Kamuro, Y. *International Plant Propagators' Society, combined proceedings* 2005, 55:216-218. 2006.

59. © NPK fertilization at planting of three hybrid poplar clones in the boreal region of Alberta. DesRochers, A., van den Driessche, R., and Thomas, B. R. *Forest Ecology and Management* 232(1-3):216-225. 2006.

60. Perfecting the pour-through. Altland, J. *Digger* 50(8):99-103, 105-107. 2006. Avoid common pitfalls of this seemingly simple method for measuring container nutrition.

61. Response of grafted *Juglans nigra* to increasing nutrient availability: growth, nutrition, and nutrient retention in root plugs. Salifu, K. F., Jacobs, D. F., Pardillo, G., and Schott, M. *HortScience* 41(6):1477-1480. 2006.

62. © The roles of nitrogen and phosphorus in increasing productivity of western hemlock and western redcedar plantations on northern Vancouver Island. Blevins, L. L., Prescott, C. E., and Van Niejen-

huis, A. *Forest Ecology and Management* 234(1-3):116-122. 2006.

63. Sample to diagnose nutrient disorders. Kackley, K., Ferry, S., and Peters, C. *Greenhouse Management and Production* 26 (8):80-82, 84-86. 2006.

64. © Seedling biomass and element content of *Pinus sylvestris* and *Pinus nigra* grown in sandy substrates with lignite. Baumann, K., Rumpelt, A., Schneider, B. U., Marschner, P., and Huttl, R. F. *Geoderma* 136:573-578. 2006.

65. Trials with natural growth promoting products. Keller, J. *International Plant Propagators' Society, combined proceedings* 2005, 55:481-488. 2006. Products tested include humate products, mycorrhiza, fulvic acid, kelp extract. Effects on growth, rooting, suppression of *Phytophthora* were tested.

General and Miscellaneous



66. Financial viability of reforestation reclaimed surface mined lands, the burden of site conversion costs, and carbon payments as reforestation incentives. Sullivan, J., Aggett, J., Amacher, G., and Burger, J. *Resources Policy* 30(4):247-258. 2006.

67. Forest Service requirements for nursery stock. Connelly, J. IN: *Plant quality: a key to success in forest establishment, proceedings of the COFORD conference, 2005*, p.55-59. 2006. In Ireland.

68. © Impact of afforestation, deforestation, and reforestation on forest cover in China from 1949 to 2003. Zhang, Y. and Song, C. *Journal of Forestry* 104(7):383-387. 2006.

69. Improvement of plant quality through nursery research and added value. Long, P. IN: *Plant quality: a key to success in forest establishment, proceedings of the COFORD conference, 2005*, p.35-37. 2006.

70. Integrating establishment practice and plant quality. Perks, M. P., Harrison, A. J., and Bathgate, S. J. IN: *Plant quality: a key to success in forest establishment, proceedings of the COFORD conference, 2005*, p.47-53. 2006. Describes the development of an Establishment Management Information System decision support tool that integrates existing silvicultural advice for tree establishment in upland forest restocking in Britain on a site-specific basis.

71. Plant quality - what the grower needs. O'Reilly, J. IN: *Plant quality: a key to success in forest establishment, proceedings of the COFORD conference, 2005*, p.61-65. 2006. In Ireland.

72. Practical management for quality in nursery production Kavanagh, J. IN: *Plant quality: a key to success in forest establishment, proceedings of the COFORD conference, 2005*, p.33-34. 2006.

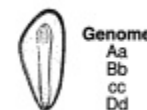
73. A propagator's notebook. LeBlanc, C. *International Plant Propagators' Society, combined proceedings* 2005, 55:566-570. 2006. One propagator's observations and thoughts from her journey in the world of propagation.

74. Using spatial technology for analyzing disturbed areas and potential site selection in Chihuahua, Mexico. Tena, V. M., Pinedo, A. C., Rubio, A. H., de L.G. Barragan, P., Pinedo, A. A., Hernandez, M. V., and Velez, C. *WIT Transactions in Ecology and the Environment* 89:401-409. 2006.

75. Weather or not. Miller, T. I. *Digger* 50(9):40-42-47. 2006. Nurseries rely on forecasting firms to help protect crops from meteorological events.

SO. Plant quality: a key to success in forest establishment. MacLennan, L. and Fennessy, J. *Proceedings of the COFORD Conference, September 20-21, 2005*. National Council for Forest Research and Development, Dublin, Ireland. 74 p. 2006. OF DER FROM: COFORD, www.coford.ie. E10 + S&H. Papers may be downloaded free from the web site. All papers are listed individually in this issue of FNN.

Genetics and Tree Improvement



76. © Effect of regeneration method of RAPD-based genetic variation of *Cyclobalanopsis glauca* (Fagaceae). Zhang, X., Chen, X.-Y., and Zhang, D. *New Forests* 32(3):347-356. 2006.

77. © Genetic variation in fall cold hardiness in coastal Douglas-fir in western Oregon and Washington. St. Clair, J. B. *Canadian Journal of Botany* 84(7):1110-1121. 2006.

78. © Identification of European and Japanese larch and their interspecific hybrid with morphological markers: application to young seedlings. Paques, L. E., Philippe, G., and Prat, D. *Silvae Genetica* 55(3):123-134. 2006.

79. The role of tree improvement in plant production and quality. Thompson, D. IN: Plant quality: a key to success in forest establishment, proceedings of the COFORD conference, 2005, p.25-31. 2006.

80. © Survival, growth and wood specific gravity of interspecific hybrids of *Pinus strobus* and *P. wallichiana* grown in Ontario. Lu, P. and Sinclair, R. W. Forest Ecology and Management 234(1-3):97-106. 2006.

Nursery Structures And Equipment



81. Backup generators: easy sleep made easy. Kenney, B. P. Greenhouse Grower 24(13):82. 2006.

82. Bioheat waste oil may cut costs. Bartok, J. W., Jr. Greenhouse Management and Production 26(10):64. 2006.

83. Coal provides heat alternative. Bartok, J. W., Jr. Greenhouse Management and Production 26(11):63-65. 2006.

84. Control your energy costs: a whole lot of hot air. Kenney, B. Greenhouse Grower 24(12):82-83. 2006.

85. Gizmos and gadgets from Missoula Technology and Development Center Vachowski, B. Native Plants Journal 7(3):308-310. 2006. Shielded herbicide sprayer; ATV-mounted native grass seeder; wildlife fencing; whitebark pine seed scarifier; reusable toweling for wrapping tree seedlings.

86. Hot houses. Bramwell, J. American Nurseryman 204(2):29-33. 2006. The market for greenhouses with retractable roofs is booming because these structures enable nurseries to grow hardier plants faster.

87. Melting greenhouse snow. Bartok, J. W., Jr. Greenhouse Management and Production 27(1):110-111. 2006.

88. New technologies increase greenhouse efficiency. Devaney, N. Greenhouse Management and Production 26(11):31, 33, 34-36. 2006. 5 places you can save money by reducing energy and labor costs.

89. Plan before you sign a contract. Bartok, J. W., Jr. Greenhouse Management and Production 26(9):84-86. 2006.

90. Root-zone heating can save energy by reducing needs. Bartok, J. W., Jr. Greenhouse Management and Production 26(8):94, 96-97. 2006.

91. Save energy, but watch for hidden risks. Ling, P., Pasian, C., and Jones, M. Greenhouse Management and Production 26(8):74-76, 78-79. 2006. Tightening a greenhouse saves money but may create other problems.

92. © A specially designed air-assisted sprayer to improve spray penetration and air jet velocity distribution inside dense nursery crops. Zhu, H., Brazee, R. D., Derksen, R. C., Fox, R. D., Krause, C. R., Ozkan, H. E., and Losely, K. Transactions of the ASABE 49(5):1285-1294. 2006.

93. What's new with nurseries and reforestation projects at the Missoula Technology and Development Center. Vachowski, B. IN: National proceedings: forest and conservation nursery associations 2005. Riley, L.E.; Dumroese, R.K.; Landis, T.D., technical coordinators. USDA Forest Service, Rocky Mountain Research Station, Proceedings RMRS-P-43, p.102-107. 2006. Current projects: Nursery soil moisture meter; Remote data collection systems; Low cost weather stations; Soil compaction tester; Shielder herbicide sprayer; Seedling wrap; Container sterilizer; Whitebark pine seed scarifier; Reforestation toolbox; Animal management economic fencing; Mechanical forbs seed harvester; Hardwood cuttings preparation equipment.

Outplanting Performance



94. Container plants and mechanised planting - the way forward? Keane, M. IN: Plant quality: a key to success in forest establishment, proceedings of the COFORD conference, 2005, p.67-71. 2006. Discusses the Lannen FP-160, the EcoPlanter and the Bracke planter.

95. © Diversifying native pinewoods using artificial regeneration Ogilvy, T. K., Legg, C. J., and Humphrey, J. W. Forestry 79(3):309-317. 2006.

96. © The effect of weed control and fertilization on survival and growth of four pine species in the Virginia Piedmont. Amishev, D. Y. and Fox, T. R. Forest Ecology and Management 236(1):93-101. 2006.

97. Effects of flooding on pitch pine (*Pinus rigida* Mill.) growth and survivorship. Craine, S. I. and Orians, C. M. Journal of the Torrey Botanical Society 133(2):289-296. 2006.

98. © Effects of forest floor planting and stock type on growth and root emergence of *Pinus contorta* seedlings in a cold northern cutblock. Campbell, D. B., Kiiskila,

S., Philip, L. J., Zwiazek, J. J., and Jones, M. D. *New Forests* 32(2):145-162. 2006.

99. © From planting to 26 years of age -- actual growth and estimated volume scenarios for spruces and pines. Johansson, T. and Naumburg, J. *New Forests* 32(2):163-178. 2006.

100. © Growth and survival of *Pinus taeda* in response to surface and subsurface tillage in the south-eastern United States. Carlson, C. A., Fox, T. R., Colbert, S. R., Kelting, D. L., Allen, H. L., and Albaugh, T. J. *Forest Ecology and Management* 234(1-3):209-217. 2006.

101. © Growth of Douglas-fir, lodgepole pine, and ponderosa pine seedlings underplanted in a partially-cut, dry Douglas-fir stand in south-central British Columbia. Vyse, A., Ferguson, C., Simard, S. W., Kano, T., and Puttonen, P. *Forestry Chronicle* 82(5):723-732. 2006.

102. © Interactions between soil scarification and Norway spruce seedling types. Johansson, K., Nilsson, U., and Allen, H. L. *New Forests* 33(1):13-27. 2007.

103. © Mounding site preparation for forest restoration: survival and short term growth response in *Quercus robur* L. seedlings. Lof, M., Rydberg, D., and Bolte, A. *Forest Ecology and Management* 232(1-3):19-25. 2006.

104. © Nursery practices and field performance for the endangered Mediterranean species *Abies pinsapo* Boiss. Navarro, R. M., Retamosa, M. J., Lopez, J., del Campo, A., Ceaceros, C., and Salmoral, L. *Ecological Engineering* 27(2):93-99. 2006.

105. © Planting oaks in group selection openings on upland sites: two case studies from Arkansas Heitzman, E. and Grell, A. *Southern Journal of Applied Forestry* 30(3):117-122. 2006.

106. © Predicting regeneration establishment in Norway spruce plantations using a multivariate multi-level model. Miina, J. and Saksa, T. *New Forests* 32(3):265-283. 2006.

107. Red oak research and demonstration area in Phelps township, North Bay, Ontario - 2004 to 2005. Deugo, D., Morneau, A., Othmer, D., and Smith, M. IN: National proceedings: forest and conservation nursery associations 2005. Riley, L.E.; Dumroese, R.K.; Landis, T.D., technical coordinators. USDA Forest Service, Rocky Mountain Research Station, Proceedings RMRS-P-43, p.127-133. 2006.

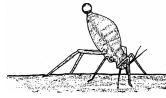
108. © Release potential of giant sequoia following heavy suppression: 20-year results. York, R. A., Battles, J. J., and Heald, R. C. *Forest Ecology and Management* 234(1-3):136-142. 2006.

109. Survival and growth of container and bareroot shortleaf pine seedlings in Missouri. Gwaze, D., Melick, R., Studyvin, C., and Hoss, G. IN: National proceedings: forest and conservation nursery associations 2005. Riley, L.E.; Dumroese, R.K.; Landis, T.D., technical coordinators. USDA Forest Service, Rocky Mountain Research Station, Proceedings RMRS-P-43, p.123-126. 2006.

110. Underplanting cherrybark oak (*Quercus pagoda* Raf.) seedlings on a bottomland site in the southern United States. Gardiner, E. S. and Yeiser, J. L. *New Forests* 32(1):105-119. 2006.

111. Whitebark pine germination, rust resistance, and cold hardiness among seed sources in the Inland Northwest: planting strategies for restoration. Mahalovich, M. F., Burr, K. E., and Foushee, D. L. IN: National proceedings: forest and conservation nursery associations 2005. Riley, L.E.; Dumroese, R.K.; Landis, T. D., technical coordinators. USDA Forest Service, Rocky Mountain Research Station, Proceedings RMRS-P-43, p.91-101. 2006.

112. Whitebark pine guidelines for planting prescriptions. Scott, G. L. and McCaughey, W. W. IN: National proceedings: forest and conservation nursery associations 2005. Riley, L.E.; Dumroese, R.K.; Landis, T.D., technical coordinators. USDA Forest Service, Rocky Mountain Research Station, Proceedings RMRS-P-43, p.84-90. 2006.



- 113. Best management practices at Monrovia growers to prevent the introduction and spread of *Phytophthora ramorum*.** Keller, J. International Plant Propagators' Society, combined proceedings 2005, 55:491-492. 2006.
- 114. © Effect of slash removal on *Gremmeniella abietina* incidence on *Pinus sylvestris* after clear-cutting in northern Sweden.** Bernhold, A., Witzell, J., and Hansson, P. Scandinavian Journal of Forest Research 21 (6):489-495. 2006.
- 115. © Effect of the latitude of seed origin on moose (*Alces alces*) browsing on silver birch (*Betula pendula*).** Vihera-Aarnio, A. and Heikkilä, R. Forest Ecology and Management 229(1-3):325-332. 2006.
- 116. © Effects of dazomet, metam sodium, and oxamyl on *Longidorus* populations and loblolly pine seedling production.** Fraedrich, S. W. and Dwinell, L. D. Southern Journal of Applied Forestry 29(3):117-122. 2006.
- 117. © Etiology and real-time polymerase chain reaction-based detection of *Gremmeniella*- and *Phomopsis*-associated disease in Norway spruce seedlings.** Borja, I., Solheim, H., Hietala, A. M., and Fossdal, C. G. Phytopathology 96(12):1305-1314. 2006.
- 118. Fungus gnat management.** Fisher, P., Eaton, A., and Cloyd, R. Greenhouse Grower 24(11):20, 22, 24. 2006.
- 119. Healthy roots lead to healthy plants.** Douglas, S. M. Greenhouse Management and Production 27(1):90-92, 94, 96. 2006. Plants with healthy roots have fewer disease problems and should bring higher returns.
- 120. Investigating koa wilt in Hawaii: examining *Acacia koa* seeds and seedpods for *Fusarium* species.** James, R. L., Dudley, N. S., and Yeh, A. Native Plants Journal 7(3):315-323. 2006.
- 121. © Microwave energy supplied by a prototype oven prevents the spread of *Fusarium* wilt during the propagation of melon plantlets by seed.** Soriano-Martin, M. L., Porrás-Piedra, A., Goldaracena, I. M., and Porrás-Soriano, A. Spanish Journal of Agricultural Research 4(3):207-212. 2006.
- 122. Molecular characterization of *Fusarium oxysporum* and *Fusarium commune* isolates from a conifer nursery.** Stewart, J. E., Kim, M.-S., James, R. L., Dumroese, R. K., and Klopfenstein, N. B. Phytopathology 96:1124-1133. 2006.
- 123. New technologies for pest management.** Wainwright-Evans, S. American Nurseryman 204(11):19-22, 24. 2006. Highlights some recent developments such as nematodes for black vine weevils, ladybugs that won't leave, mite destroyers, beneficial thrips, predatory mites, new insecticides Safari, BotaniGard, TriCon, and Shuttle, and pheromones.
- 124. Pests can be unintentionally spread in New Zealand through commercial transport of nursery plants.** McNeill, M., Proffitt, J., and Phillips, C. International Plant Propagators' Society, combined proceedings 2005, 55:198-207. 2006.
- 125. *Phomopsis* and sudden oak death: a tale of two nursery nuisances.** Moltzan, B. D. IN: National proceedings: forest and conservation nursery associations 2005. Riley, L.E.; Dumroese, R.K.; Landis, T.D., technical coordinators. USDA Forest Service, Rocky Mountain Research Station, Proceedings RMRS-P-43, p.141-142. 2006.
- 126. © Port-Orford-cedar resistant to *Phytophthora lateralis*.** Oh, E., Hansen, E. M., and Sniezko, R. A. Forest Pathology 36(6):385-394. 2006.
- 127. © Potential climatic suitability for establishment of *Phytophthora ramorum* within the contiguous United States.** Venette, R. C. and Cohen, S. D. Forest Ecology and Management 231(1-3):18-26. 2006.
- 128. © Risk from *Sirococcus conigenus* to understory red pine seedlings in northern Wisconsin.** Bronson, J. J. and Stanosz, G. R. Forest Pathology 36(4):271-279. 2006.
- 129. © Role of monoterpenes in *Hylobius abietis* damage levels between cuttings and seedlings of *Picea sitchensis*.** Kennedy, S., Cameron, A., Thoss, V., and Wilson, M. Scandinavian Journal of Forest Research 21 (4):340-344. 2006.
- 130. Strawberry nurseries: summaries of alternatives and trials in different geographic regions.** Porter, I., Mattner, S., Mann, R., and Gounder, R. Acta Horticulturae 708:187-192. 2006.
- 131. © Structure-activity relationships of benzoic acid derivatives as antifeedants for the pine weevil,**

Hylobius abietis. Unelius, C. R., Nordlander, G., Nordenheim, H., Hellqvist, C., Legrand, S., and Borg-Karlson, A.-K. *Journal of Chemical Ecology* 32 (10):2191-2203. 2006.

132. © Survival and vitality of *Gremmeniella abietina* on *Pinus sylvestris* slash in northern Sweden. Witzell, J., Bernhold, A., and Hansson, P. *Forest Pathology* 36 (6):406-412. 2006.

133. Survival of *Phytophthora ramorum* compared to other species of *Phytophthora* in potting media components, compost, and soil. Linderman, R. G. and Davis, E. A. *HortTechnology* 16(3):502-507. 2006.

134. © Use of selenate-resistant strains as markers for the spread and survival of *Botrytis cinerea* under greenhouse conditions. Korolev, N., Katan, T., and Elad, Y. *Phytopathology* 96(11):1195-1203. 2006.

135. Variability associated with suppression of gray mold (*Botrytis cinerea*) on geranium by foliar applications of nonaerated and aerated compost teas. Scheuerell, S. J. and Mahaffee, W. F. *Plant Disease* 90 (9):1201-1208. 2006.

136. Weed and pest control in nursery production and their impact on plant quality. Losing, H. IN: *Plant quality: a key to success in forest establishment*, proceedings of the COFORD conference, 2005, p.21-23. 2006.

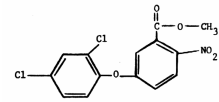
137. What's new in bug control? Cloyd, R. A. *Greenhouse Management and Production* 26(10):49-50, 52, 54. 2006. Gives details on Celero, Aria, Judo, Safari, TriCon, Overture.

138. What you need to know about *P. ramorum*. Mickelbart, M. V. and Beckerman, J. *American Nurseryman* 204(10):20-23. 2006.

139. What you need to know about viruses. Yoshimura, M. A. *International Plant Propagators' Society, combined proceedings 2005*, 55:459-461. 2006.

140. All in the family. Pottorff, L. *American Nurseryman* 204(5):21-22, 24. 2006. A plant pathologist takes us back to the classroom because knowing what family a particular insecticide belongs to helps growers and landscapers use each material more effectively.

Pesticides



141. © Foliar deposition and off-target loss with different spray techniques in nursery applications. Zhu, H., Derksen, R. C., Guler, H., Krause, C. R., and Ozkan, H. E. *Transactions of the ASABE* 49(2):325-334. 2006.

142. New ethylene absorbents: no miracle cure. Reid, M. and Dodge, L. *Perishables Handling Newsletter* 83:8. 1995.

Seedling Harvesting And Storage



143. © Overwinter storability of conifer planting stock: operational testing of fall frost hardiness. L'Hirondelle, S. J., Simpson, D. G., and Binder, W. D. *New Forests* 32(3):307-321. 2006.

144. Applying the target plant concept to nursery stock quality. Landis, T. D. and Dumroese, R. K. IN: *Plant quality: a key to success in forest establishment*, proceedings of the COFORD conference, 2005, p.1-9. 2006.

Seedling Physiology And Morphology



145. © Chill unit models and recent changes in the occurrence of winter chill and spring frost in the United Kingdom. Sunley, R. J., Atkinson, C. J., and Jones, H. G. *Journal of Horticultural Science and Biotechnology* 81(6):949-958. 2006.

146. Chlorophyll fluorescence: what it is and what do the numbers mean? Ritchie, G. A. IN: *National proceedings: forest and conservation nursery associations 2005*. Riley, L.E.; Dumroese, R.K.; Landis, T.D., technical coordinators. USDA Forest Service, Rocky Mountain Research Station, Proceedings RMRS-P-43, p.34-43. 2006.

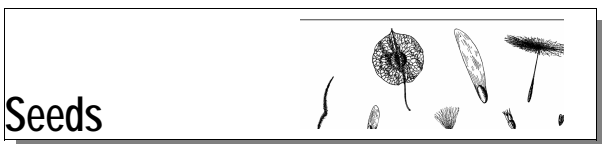
147. © Critical night length for bud set and its variation in two photoperiodic ecotypes of *Betula pendula*. Vihera-Aarnio, A., Hakkinen, R., and Junttila, O. *Tree Physiology* 26(8):1013-1018. 2006.

148. The effects of lifting and handling on plant quality: the Ontario perspective. Colombo, S. IN: Plant quality: a key to success in forest establishment, proceedings of the COFORD conference, 2005, p.39-46. 2006.

149. © Foliar application of GA₃ during terminal long-shoot bud development stimulates shoot apical meristem activity in *Pinus sylvestris* seedlings. MacDonald, J. E. and Little, C. H. A. Tree Physiology 26 (10):1271-1276. 2006.

150. © Geographic and seasonal variation in cold hardiness of whitebark pine. Bower, A. D. and Aitken, S. N. Canadian Journal of Forest Research 36(7):1842-1850. 2006.

151. © Influence of nutrient supply and water vapour pressure on root architecture of Douglas-fir and western hemlock seedlings. Conlin, T. S. S. and van den Driessche, R. Functional Plant Biology 33(10):941-948. 2006.



152. Morphology, physiology, survival, and field performance of containerized coastal Douglas-fir seedlings given different dormancy-induction regimes. MacDonald, J. E. and Owens, J. N. HortScience 41 (6):1416-1420. 2006.

153. Assessing viability of northern red oak acorns with X-rays. Goodman, R. C., Jacobs, D. F., and Karrfalt, R. P. Native Plants Journal 7(3):279-283. 2006.

154. © Effects of different pretreatments on the germination of different wild cherry (*Prunus avium* L.) seed sources. Esen, D., Yildiz, O., Cicek, E., Kulac, S., and Kutsal, C. Pakistan Journal of Botany 38(3):735-743. 2006.

155. © Effects of drought stresses induced by polyethylene glycol on germination of *Pinus sylvestris* var. *mongolica* seeds from natural and plantation forests on sandy land. Zhu, J., Kang, H., Tan, H., and Xu, M. Journal of Forest Research 11(5):319-328. 2006.

156. © Germination and seedling growth of *Quercus vulcanica*: effects of stratification, desiccation, radicle pruning, and season of sowing. Tilki, F. and Alptekin, C. U. New Forests 32(3):243-251. 2006.

157. © Mistakes in germination ecology and how to avoid them. Baskin, C. C., Thompson, K., and Baskin, J. M. Seed Science Research 16(3):165-168. 2006.

158. Pressure-time dependency of vacuum degassing as a rapid method for viability assessment using tetrazolium chloride: a comparative study of 17 *Pinus* species. Daws, M. I., Cousins, C., Hall, J., and Wood, C. B. Seed Science and Technology 34(2):475-483. 2006.

159. Reaping what you sow -- seeds and plant quality. O'Reilly, C. and Doody, P. IN: Plant quality: a key to success in forest establishment, proceedings of the COFORD conference, 2005, p.11-20. 2006.

160. Some common misconceptions about seed dormancy. Geneve, R. L. International Plant Propagators' Society, combined proceedings 2005, 55:327-330. 2006.

161. The USDA Forest Service National Seed Laboratory. Karrfalt, R. P. IN: National proceedings: forest and conservation nursery associations 2005. Riley, L.E.; Dumroese, R.K.; Landis, T.D., technical coordinators. USDA Forest Service, Rocky Mountain Research Station, Proceedings RMRS-P-43, p.115-118. 2006.

162. Using x-ray image analysis to assess the viability of northern red oak acorns: implications for seed handlers. Goodman, R. C., Jacobs, D. F., and Karrfalt, R. P. IN: National proceedings: forest and conservation nursery associations 2005. Riley, L.E.; Dumroese, R.K.; Landis, T.D., technical coordinators. USDA Forest Service, Rocky Mountain Research Station, Proceedings RMRS-P-43, p.143-146. 2006.

Soil Management and Growing Media



163. © Alleviation of soil compaction: requirements, equipment and techniques. Spoor, G. Soil Use and Management 22(2):113-122. 2006.

164. The art of soil mediums. Rafter, D. Digger 50 (8):143-147. 2006.

165. Container no-brainer. Altland, J. Digger 50 (11):24, 26-27. 2006. The physical properties of substrates play a big part in crop health and costs.

166. The development of sustainable growing media components from composted specific bio-waste streams. Bragg, N., Brocklehurst, T. F., Smith, A. C.,

Bhat, M., and Waldron, K. W. International Plant Propagators' Society, combined proceedings 2005, 55:256-258. 2006.

167. An insight into an accredited potting mix supplier in Australia. Windrim, S. International Plant Propagators' Society, combined proceedings 2005, 55:73-74. 2006.

168. © Kenaf (*Hibiscus cannabinus* L.) core and rice hulls as components of container media for growing *Pinus halepensis* M. seedlings. Marianthi, T. Biore-source Technology 97(14):1631-1639. 2006.

169. A tricky topic: research suggests it's best to aim low when managing substrate pH. Altland, J. Digger 50(12):42-44, 46-47. 2006.

170. Use of paper-mill sludges and municipal compost in nursery substrates. Chong, C. and Purvis, P. International Plant Propagators' Society, combined proceedings 2005, 55:428-432. 2006.

Tropical Forestry and Agroforestry



171. © Achieving conservation objectives through production forestry: the case of *Acacia koa* on Hawaii Island. Pejchar, L. and Press, D. M. Environmental Science and Policy 9(5):439-447. 2006.

172. Can lessons from the Community Rainforest Reforestation Program in eastern Australia be learned? Vanclay, J. K. International Forestry Review 8(2):256-264. 2006. Offers a brief overview and attempts to compile a "lessons learned" synthesis that is lacking from the book "Reforestation in the Tropics and Subtropics of Australia".

173. Evaluation of seedling quality and planting tools for successful establishment of tropical hardwoods. Mexal, J. G., Negreros-Castillo, P., Cuevas Rangel, R. A., and Moreno, R. International Plant Propagators' Society, combined proceedings 2005, 55:524-530. 2006.

174. Macropropagation of *Shorea guiso* using stem cuttings. Patricio, H. P., Castaneto, Y. T., Vallesteros, A. P., and Castaneto, E. T. Journal of Tropical Forest Science 18(3):198-201. 2006.

175. © Prioritization of target areas for rehabilitation: a case study from West Kalimantan, Indonesia. Marjokorpi, A. and Otsamo, R. Restoration Ecology 14 (4):662-673. 2006.

176. © Rehabilitating degraded forest land in central Vietnam with mixed native species plantings. McNamara, S., Tinh, D. V., Erskine, P. D., Lamb, D., Yates, D., and Brown, S. Forest Ecology and Management 233 (2-3):358-365. 2006.

Vegetative Propagation and Tissue Culture



177. Collecting dormant hardwood cuttings for western riparian restoration projects. Luna, T., Dumroese, R. K., and Landis, T. D. USDA Forest Service, Technology & Development Program 0624-2332-MTDC. 8 p. 2006.

178. © Container type and volume influences adventitious rooting and subsequent field growth of stem cuttings of loblolly pine. LeBude, A. V., Goldfarb, B., Blazich, F. A., Wright, J. A., Cazell, B., Wise, F. C., and Frampton, J. Southern Journal of Applied Forestry 30 (3):123-131. 2006.

179. Correlation of growing degree days and the timing of cuttings. Barnes, H. W. International Plant Propagators' Society, combined proceedings 2005, 55:386-392. 2006.

180. Grafting of *Acacia koa* Gray onto young *Acacia* seedlings. Nelson, S. C. Native Plants Journal 7(2):137-140. 2006.

181. Influences of cutting diameter and soil moisture on growth and survival of black willow, *Salix nigra*. Greer, E., Pezeshki, S. R., and Shields, F. D., Jr. Journal of Soil and Water Conservation 61(5):311-323. 2006.

182. Methods and techniques to improve root initiation of cuttings. Crawford, M. International Plant Propagators' Society, combined proceedings 2005, 55:581-585. 2006.

183. Optimizing the water relations of cuttings during propagation. Davies, F. T., Jr. International Plant Propagators' Society, combined proceedings 2005, 55:585-592. 2006.

184. The role of clonal propagation in forestry and agriculture in Australia. Radke, P. International Plant Propagators' Society, combined proceedings 2005, 55:96-99. 2006.

185. Severe cutback of stock plant influences rooting in shoots of *Quercus bicolor* and *Quercus macrocarpa*. Amissah, N. and Bassuk, N. International Plant Propagators' Society, combined proceedings 2005, 55:436-438. 2006.

186. Somatic embryo development in willow oak. Wells, S., Kester, S. T., and Geneve, R. L. International Plant Propagators' Society, combined proceedings 2005, 55:451-453. 2006.

187. Stacked propagation: a new way to grow native plants from root cuttings. Dreesen, D. R., Landis, T. D., and Pinto, J. R. Native Plants Journal 7(3):286-292. 2006.

188. Successfully propagating cuttings takes planning. Runkle, E. S. Greenhouse Management and Production 26(8):92-93. 2006.

Water Management and Irrigation



189. Avoid irrigation system design flaws. Merrill, L. and Konjoian, P. Greenhouse Management and Production 26(9):66-68, 70, 72, 74-75. 2006. The challenges of cleaning a contaminated irrigation system have more to do with plumbing and design than with algae and microbial growth.

190. Challenges and opportunities for extension educators involved in best management practices. Simonne, E. H. and Ozores-Hampton, M. HortTechnology 16(3):403-407. 2006.

191. Evaluating an irrigation system upgrade. Messina, J. International Plant Propagators' Society, combined proceedings 2005, 55:136-138. 2006.

192. Get ready for runoff regulation. Eberly, D. Greenhouse Grower 24(12):32, 34-35. 2006.

193. It's in the H₂O. Altland, J. Digger 50(10):47, 49-51. 2006. High-quality irrigation water makes the Willamette Valley a great place to grow nursery stock.

194. Nutrient management of nursery runoff water using constructed wetland systems. Taylor, M. D.,

White, S. A., Chandler, S. L., Klaine, S. J., and Whitwell, T. HortTechnology 16(4):610-614. 2006.

195. Some problems in water recycling. Leach, S. International Plant Propagators' Society, combined proceedings 2005, 55:128-131. 2006.

196. Sprinkler uniformity in greenhouses and nurseries. Savory, P. International Plant Propagators' Society, combined proceedings 2005, 55:206-207. 2006.

197. Water disinfecting techniques for plant pathogen control. Yiasoumi, W. International Plant Propagators' Society, combined proceedings 2005, 55:138-141. 2006.

198. Water recycling: how we do it. Deckys, E. International Plant Propagators' Society, combined proceedings 2005, 55:53-55. 2006.

199. Water saving, more than just recycling. Heyne, G. International Plant Propagators' Society, combined proceedings 2005, 55:131-136. 2006.

Weed Control



200. Basamid G for weed control in forest tree nurseries. Muckenfuss, A. and Isaacs, B. IN: National proceedings: forest and conservation nursery associations 2005. Riley, L.E.; Dumroese, R.K.; Landis, T.D., technical coordinators. USDA Forest Service, Rocky Mountain Research Station, Proceedings RMRS-P-43, p.119-122. 2006.

201. Burning nettle, common purslane, and rye response to a clove oil herbicide. Boyd, N. S. and Brennan, E. B. Weed Technology 20(3):646-650. 2006.

202. © Effect of neem (*Azadirachta indica* A. Juss) leachates on germination and seedling growth of weeds. Sindhu, A., Kumar, S., Sindhu, G., Ali, H., and Abdulla, M. K. Allelopathy Journal 16(2):329-334. 2005.

203. © Effect of vegetation control on the survival and growth of Scots pine and Norway spruce planted on former agricultural land. Jylha, P. and Hytonen, J. Canadian Journal of Forest Research 36(10):2400-2411. 2006.

204. © Effects of full and partial clearing, with and without herbicide, on weed cover, light availability,

- and establishment success of white ash in shrub communities of abandoned pastureland in southwestern Quebec, Canada. Cogliastro, A., Benjamin, K., and Bouchard, A. *New Forests* 32(2):197-210. 2006.
- 205. Effects of mulch types and concentrations of 1,3-dichloropropene plus chloropicrin on fumigant retention and nutsedge control.** Santos, B. M., Gilreath, J. P., Motis, T. N., von Hulten, M., and Siham, M. N. *HortTechnology* 16(4):637-640. 2006.
- 206. Evaluation of quinclamine and diuron for postemergence control of liverwort.** Newby, A. F., Gilliam, C. H., Wehtje, G. R., and Altland, J. E. *International Plant Propagators' Society, combined proceedings 2005*, 55:556-561. 2006.
- 207. © Five-year growth responses of Douglas-fir, western hemlock, and western redcedar seedlings to manipulated levels of overstory and understory competition.** Harrington, T. B. *Canadian Journal of Forest Research* 36(10):2439-2453. 2006.
- 208. Glyphosate-induced weed shifts.** Culpepper, A. S. *Weed Technology* 20(2):277-281. 2006.
- 209. © Growth and development of ponderosa pine on sites of contrasting productivities: relative importance of stand density and shrub competition effects.** Zhang, J., Oliver, W. W., and Busse, M. D. *Canadian Journal of Forest Research* 36(10):2426-2438. 2006.
- 210. © Interactions between influences of genotype and grass competition on growth and wood stiffness of juvenile radiata pine in a summer-dry environment.** Mason, E. G. *Canadian Journal of Forest Research* 36(10):2454-2463. 2006.
- 211. Little weed, big trouble.** Altland, J. *Digger* 50(9):23-24, 26-29. 2006.
- 212. The natural history of soil seed banks of arable land.** Baskin, C. C. and Baskin, J. M. *Weed Science* 43(3):549-557. 2006.
- 213. Pick your battles: eliminating weedy cottonwood is a fight worth taking on.** Altland, J. *Digger* 51(1):34-36, 38-42. 2007.
- 214. Pinebark mini-nuggets provide effective weed control in nursery crops grown in large containers.** Richardson, B. M., Gilliam, C. H., and Wehtje, G. R. *International Plant Propagators' Society, combined proceedings 2005*, 55:561-566. 2006.
- 215. Practical changes to single-boom sprayers for zone herbicide applications.** Donald, W. W. and Nelson, K. *Weed Technology* 20(2):502-510. 2006.
- 216. © Twelfth-year response of Douglas-fir to area of weed control and herbaceous versus woody weed control treatments.** Rose, R., Rosner, L. S., and Ketchum, J. S. *Canadian Journal of Forest Research* 36(10):2464-2473. 2006.

Literature Order Form

Winter 2007

Electronic Adobe PDF Copies - To save the costs of copying and mailing hard copies of requested articles, we are offering a new service. You can download any of the articles listed in the New Nursery Literature section by going to the Reforestation, Nurseries, and Genetics Resources (RNGR) website: www.rngr.net. There you will have to fill out a form and then you will have access to the articles. Note that the copyright restriction still applies, but the 25 article does not so you can download as many articles as you want.

Hard Copies - Please fill out a separate order form for each person ordering literature. Write in the number or letter of the articles in which you are interested in the spaces at the bottom of this page. Note that we will only provide free copies of the first 25! For items that require a copyright fee, you will receive the title page with abstract and ordering instructions. if you want the entire article. Fax or mail this form to:

Forest Nursery Notes
 J.H. Stone Nursery
 2606 Old Stage Rd.
 Central Point, OR 97502
 TEL: 541.858.6131
 FAX: 541.858.6110
 E-Mail: rewatson@fs.fed.us

Name:	Position:
<hr/>	<hr/>
Department:	Nursery/Company:
<hr/>	<hr/>
Mailing address:	
<hr/>	
Street Address:	
<hr/>	
City:	State/Province:
<hr/>	<hr/>
Country:	Zip/Postal Code:
<hr/>	<hr/>
Telephone:	FAX:
<hr/>	<hr/>
E-mail:	Website:
<hr/>	<hr/>

Fill in the number or letter each article from the New Nursery Literature section in the following spaces:

<hr/>	<hr/>	<hr/>	<hr/>	<hr/>	<hr/>	<hr/>	<hr/>	<hr/>	<hr/>
<hr/>	<hr/>	<hr/>	<hr/>	<hr/>	<hr/>	<hr/>	<hr/>	<hr/>	<hr/>
<hr/>	<hr/>	<hr/>	<hr/>	<hr/>	<hr/>	<hr/>	<hr/>	<hr/>	<hr/>