



# New Nursery Literature

Copies of the following journal articles or publications are free and can be ordered using the Literature Order Form on the last page of this section. Just write in the appropriate number or letter on the form and return it to us. Note that there are three restrictions:

**1. Limit in the Number of Free Articles:** In an effort to reduce mailing costs, we are limiting the number of free articles that can be ordered through the FNN literature service. All subscribers will be restricted to 25 free articles per issue.

**2. Copyrighted Material.** Items with © are copyrighted and require a fee for each copy, so only the title page and abstract will be provided through this service. If you want the entire article, then you can order a copy from a library service.

**3. Special Orders (SO).** Special orders are books or other publications that, because of their size or cost, require special handling. For some, the Forest Service has procured copies for free distribution, but others will have to be purchased. Prices and ordering instructions are given following each listing in the New Nursery Literature section.

## Bareroot Production

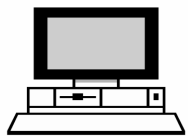


**1. Estimating merchantable seedlings in nursery seedbeds.** Saenz-Romero, C., Marty, T. L., and Guries, R. P. *Tree Planters' Notes* 50(1):23-27. 2003.

**2. © Influence of nursery soil amendments on water relations, root architectural development, and field performance of Douglas-fir transplants.** Jacobs, D. F., Rose, R., Haase, D. L., and Morgan, P. D. *New Forests* 26(3):263-277. 2003.

**3. Propagation protocol for bareroot bigtooth and quaking aspen using seeds.** Day, R. A., Walter, R. P., Kozar, J. J., Bricker, S. J., and Bowers, J. G. *Native Plants Journal* 4(2):125-128. 2003.

## Business Management



**4. Raise forklift safety awareness.** Decker, B. and Mauschbaugh, A. J. *Greenhouse Management and Production* 23(9):46-47. 2003.

**5. Safety.** Alaniz, R. M. *International Plant Propagators' Society, Combined Proceedings 2002*, 52:648. 2003.

**6. Safety training.** Mulhern, B. *American Nurseryman* 198(9):54-56. 2003. Experts offer advice on what green industry business owners should do to keep their employees safe.

**7. Skid-steer loader safety tips.** *Greenhouse Management and Production* 23(9):49. 2003.

## Container Production



**8. © The effect of short day treatments on containerized Douglas-fir morphology, physiology and phenology.** Turner, J. and Mitchell, S. J. *New Forests* 26(3):279-295. 2003.

**9. The evolution of container design.** May, P. B. *International Plant Propagators' Society, Combined Proceedings 2002*, 52:100-104. 2003.

**10. Lighting up profits: managing light in the greenhouse.** Fisher, P. and Runkle, E. *Greenhouse Grower* 21(10):66-68, 70, 72. 2003.

**11. Propagation of oak liners.** Hart, P. *International Plant Propagators' Society, Combined Proceedings 2002*, 52:478-481. 2003.

**12. Propagation protocol for container willows in the southwestern US using seeds.** Dreesen, D. R. *Native Plants Journal* 4(2):118-124. 2003.

**13. Rocketpot technology.** Lawton, P. *International Plant Propagators' Society, Combined Proceedings 2002*, 52:113-116. 2003.

**14. Root deformation in plantations of container-grown stock: consequences for growth, stability, and stem quality.** Stromberg, A. *International Plant Propagators' Society, Combined Proceedings 2002*, 52:108-113. 2003.

**15. Some new research into container design.** Moore, D. G. *International Plant Propagators' Society, Combined Proceedings 2002*, 52:105-108. 2003.

## Diverse Species



**16. Developing techniques to produce native warm and cool season grasses and forbs in Missouri.** Navarrete-Tindall, N. and Erickson, B. *International Plant Propagators' Society, Combined Proceedings 2002*, 52:429-434. 2003.

**17. Effect of bifenthrin (Talstar) on mycorrhizal colonization of California native plants in containers.** Corkidi, L., Bohn, J., and Evans, M. *International Plant Propagators' Society, Combined Proceedings 2002*, 52:604-608. 2003.

**18. The effect of invasive plants on native ecosystems -- how we can help.** Young, B. L. *International Plant Propagators' Society, Combined Proceedings 2002*, 52:626-633. 2003.

**19. © Freeze / thaw stress in *Ceanothus* of southern California chaparral.** Ewers, F. W., Lawson, M. C., Bowen, T. J., and Davis, S. D. *Oecologia* 136(2):213-219. 2003.

**20. Germination of central Australian plant seed after long-term storage.** McBurnie, G. *International Plant Propagators' Society, Combined Proceedings 2002*, 52:83-89. 2003.

**21. Germination of seeds of big and bottlebrush squirreltail.** Young, J. A., Clements, C. D., and Jones, T. *Journal of Range Management* 56(3):277-281. 2003.

**22. Germination of seeds of Fremont cottonwood.** Young, J. A. and Clements, C. D. *Journal of Range Management* 56(6):660-664. 2003.

**23. Germination of seeds of robust needlegrass.** Young, J. A., Clements, C. D., and Jones, T. A. *Journal of Range Management* 56(3):247-250. 2003.

**24. © Germination of the hard seed coated *Opuntia tomentosa* S.D., a cacti from the Mexico valley.** Olvera-Carrillo, Y., Marquez-Guzman, J., Barradas, V. L., Sanchez-Coronado, M. E., and Orozco-Segovia, A. *Journal of Arid Environments* 55(1):29-42. 2003.

**25. Growing Agaves.** Irish, M. *International Plant Propagators' Society, Combined Proceedings 2002*, 52:624-626. 2003.

**26. Growing indigenous bulbs in the Eastern Cape.** McMaster, J. C. *International Plant Propagators' Society, Combined Proceedings 2002*, 52:48-51. 2003.

**27. Improving vegetative propagation techniques of sweet fern (*Comptonia peregrina*).** Ruchala, S. L., Zhang, D., and Mitchell, W. *International Plant Propagators' Society, Combined Proceedings 2002*, 52:381-387. 2003.

**28. Limiting your losses on hard-to-root California natives.** Truscott, M. *International Plant Propagators' Society, Combined Proceedings 2002*, 52:590-593. 2003.

**29. Micropropagation of native North American *Lilium* species.** Petley, N. D. *International Plant Propagators' Society, Combined Proceedings 2002*, 52:540. 2003.

**30. Mycorrhizal development and plant growth in inoculated and non-inoculated plots of California native grasses and shrubs.** Salyards, J. R., Evans, R. Y., and Berry, A. M. *Native Plants Journal* 4(2):143-149. 2003.

**31. Mycorrhizal fungi.** McDermott, E. L. and Berry, A. M. *Native Plants Journal* 4(2):141-142. 2003.

- 32. Mycorrhizal inoculum for propagation of *Epacris impressa*.** Conomikes, M. R., McLean, C. B., Starrett, M. C., and Lawrie, A. C. International Plant Propagators' Society, Combined Proceedings 2002, 52:151-155. 2003.
- 33. Optimizing acid scarification and stratification combinations for russet buffaloberry seeds.** Rosner, L. S. and Harrington, J. T. Native Plants Journal 4(2):81-86. 2003.
- 34. Percussion as an alternative seed treatment for *Robinia neomexicana*.** Khadduri, N. Y., Harrington, J. T., and Murray, L. Seed Science and Technology 31 (3):561-570. 2003.
- 35. Preliminary rooting evaluation of North American *Stewartia*, *Symplocos*, and *Persea*.** Barnes, H. W., Oyerly, P., and Lewandowski, R. J. International Plant Propagators' Society, Combined Proceedings 2002, 52:551-555. 2003.
- 36. Propagating aquatic plants.** Billing, K. International Plant Propagators' Society, Combined Proceedings 2002, 52:473-477. 2003.
- 37. Propagating selected submerged aquatic species of the Chesapeake Bay.** Kujawski, J. International Plant Propagators' Society, Combined Proceedings 2002, 52:522-524. 2003.
- 38. Propagation protocol for black ash *Fraxinus nigra* Marsh.** Benedict, L. and David, R. Native Plants Journal 4(2):100-103. 2003.
- 39. Propagation protocol for Canada lily (*Lilium canadense*).** Heus, P. Native Plants Journal 4(2):107-109. 2003.
- 40. Recovery, propagation, and evaluation of the Box Huckleberry (*Gaylussacia brachycera*).** Pooler, M. and Dix, R. International Plant Propagators' Society, Combined Proceedings 2002, 52:519-520. 2003.
- 41. Seed germination and propagation of *Arachnorchis formosa*.** Huynh, T. T., McLean, C. B., and Lawrie, A. C. International Plant Propagators' Society, Combined Proceedings 2002, 52:161-166. 2003.
- 42. Seed germination of burnet *Sanguisorba* spp.** Holloway, P. S. and Matheke, G. E. M. Native Plants Journal 4(2):95-99. 2003.
- 43. Sex and the single *Salix*: considerations for riparian restoration.** Landis, T. D., Dreesen, D. R., and Dumroese, R. K. Native Plants Journal 4(2):111-117. 2003.
- 44. Trends in the western native plant seed industry since 1990.** Dunne, R. A. and Dunne, C. B. Native Plants Journal 4(2):88-94. 2003.
- 45. Using a shop vacuum to clean Salicaceae seeds.** Dawes, D. Native Plants Journal 4(2):140. 2003.
- 46. Vegetative propagation of southwestern plants: *Ambrosia deltoidea*, *Buddleja marrubifolia*, *Vauquelinia californica*, and *Vauquelinia corymbosa*.** Schuch, U. K., Davison, E., and Kelly, J. International Plant Propagators' Society, Combined Proceedings 2002, 52:637-643. 2003.
- 47. Wetland plant propagation: comparative growth and reproduction of micropropagated *Sagittaria latifolia* ecotypes.** Kane, M. E., Philman, N. L., and Emshousen, C. International Plant Propagators' Society, Combined Proceedings 2002, 52:453-459. 2003.



**48. Chlorosis in field-grown maples: research discovers manganese deficiency is the culprit.** Altland, J. OAN Digger 47(12):28-32. 2003.

**49. Development of phosphorus indices for nutrient management planning strategies in the United States.** Sharpley, A. N., Weld, J. L., Beegle, D. B., Kleinman, P. J. A., Gburek, W. J., Moore, P. A., Jr., and Mullins, G. Journal of Soil and Water Conservation 58(3):137-152. 2003.

**50. © Effects of different soil treatments on growth and net nitrogen uptake of newly planted *Picea abies* (L.) Karst. seedlings.** Nordborg, F., Nilsson, U., and Orlander, G. Forest Ecology and Management 180(1-3):571-582. 2003.

**51. © Effects of soil compaction, forest leaf litter and nitrogen fertilizer on two oak species and microbial activity.** Jordan, D., Ponder, F., Jr., and Hubbard, V. C. Applied Soil Ecology 23(1):33-41. 2003.

**52. Effects of wood, peat and coal ash fertilization on Scots pine foliar nutrient concentrations and growth of afforested former agricultural peat soils.** Hytonen, J. *Silva Fennica* 37(2):219-234. 2003.

**53. © Nitrogen uptake and utilization by slow- and fast-growing families of interior spruce under contrasting fertility regimes.** Miller, B. D. and Hawkins, B. J. *Canadian Journal of Forest Research* 33(6):959-966. 2003.

**54. © Nondestructive and rapid estimation of hardwood foliar nitrogen status using the SPAD-502 chlorophyll meter.** Chang, S. X. and Robison, D. J. *Forest Ecology and Management* 181(3):331-338. 2003.

**55. Nutrient analysis for the nursery industry.** Hall, R. and Raynor, K. *International Plant Propagators' Society, Combined Proceedings 2002*, 52:126-131. 2003.

**56. © Phosphorus availability under continuous point source irrigation.** Ben-Gal, A. and Dudley, L. M. *Soil Science Society of America Journal* 67(5):1449-1456. 2003.

**57. The role of micronutrients and how they affect plant growth.** Nichols, D. and Ma, Y. *International Plant Propagators' Society, Combined Proceedings 2002*, 52:116-120. 2003.

**50. Fertigation.** Burt, C., O'Connor, K., and Ruehr, T. *Irrigation Training and Research Center, California Polytechnic State University*. 295 p. 1998. Chapter: Safety; Chemical injectors; Injection techniques for various irrigation methods/ Irrigation principles, leaching, and fertilizer uniformity; Nitrogen transformations and processes; Nitrogen uptake; Other nutrient processes; Solubility and compatibility; Specific fertilizers and agricultural minerals; Plant and soil testing; Drip system maintenance; Infiltration problems; Soil pH modification; Insecticide, fungicide, and herbicide injection (chemigation); Grower drip fertigation experiences; Sample fertigation calculations. Order from: The Irrigation Training & Research Center, California Polytechnic State University, San Luis Obispo, CA 93407. TEL: 805.756.2434. Website: <http://www.irtc.org/>. Price \$52.75 including shipping and handling.

## General and Miscellaneous



**58. Afforestation as a real option: choosing among options.** Thorsen, B. J. and Malchow-Moller, N. IN: *Recent accomplishments in applied forest economics research*, p. 73-80. Kluwer Academic Publishers. 2003.

**59. © Carbon-accounting methods and reforestation incentives.** Cacho, O. J., Hean, R. L., and Wise, R. M. *Australian Journal of Agricultural and Resource Economics* 47(2):153-179. 2003.

**60. © The determinants of reforestation in Brazil.** Bacha, C. J. C. *Applied Economics* 35(6):631-639. 2003.

**61. The floriculture and nursery crop research initiative: a partnership of government, industry, and universities.** Bretting, P. K. *International Plant Propagators' Society, Combined Proceedings 2002*, 52:501-504. 2003.

**62. Installing a practical research project and interpreting research results.** Dumroese, R. K. and Wenny, D. L. *Tree Planters' Notes* 50(1):18-22. 2003.

**63. An overview of bio-dynamics.** Guthrie, J. and Davaux, D. *International Plant Propagators' Society, Combined Proceedings 2002*, 52:191-197. 2003.

**64. Production and establishment of trees in the Great Plains: a question and answer session.** Tinus, R. W. *Tree Planters' Notes* 50(1):5-8. 2003. Answers questions posed by the South Dakota Association of Conservation Districts.

**65. Progress in forest nursery practice.** Appleton, E. J. *International Plant Propagators' Society, Combined Proceedings 2002*, 52:198-200. 2003.

**66. Silvicultural practices and costs in coastal British Columbia: a case study.** Wang, S., van Kooten, G. C., and Wilson, B. *Tree Planters' Notes* 50(1):50-57. 2003.

## Genetics and Tree Improvement



Genome  
Aa  
Bb  
Cc  
Dd

**67. © Families of loblolly pine that are the most stable for resistance to fusiform rust are the least predictable.** McKeand, S. E., Amerson, H. V., and Mullin, T. J. *Canadian Journal of Forest Research* 33(7):1335-1339. 2003.

**68. © Genetic diversity impacts of forest fires, forest harvesting, and alternative reforestation practices in black spruce (*Picea mariana*).** Rajora, O. P. and Pluhar, S. A. *Theoretical and Applied Genetics* 106(7):1203-1212. 2003.

**69. Genotype by environment interaction and its implications for genetic improvement of interior spruce in British Columbia.** Xie, C.-Y. *Canadian Journal of Forest Research* 33(9):1635-1643. 2003.

**70. © Geographic variation in cold hardiness among eastern white pine (*Pinus strobus* L.) provenances in Ontario.** Lu, P., Joyce, D. G., and Sinclair, R. W. *Forest Ecology and Management* 178(3):329-340. 2003.

**71. © Inbreeding and conservation genetics in whitebark pine.** Krakowski, J., Aitken, S. N., and El-Kassaby, Y. A. *Conservation Genetics* 4(5):581-593. 2003.

**72. © Influence of nursery practices on the genetic structure of beech (*Fagus sylvatica* L.) seedling populations.** Konnert, M. and Ruetz, W. *Forest Ecology and Management* 184(1-3):193-200. 2003.

**73. © Quantitative genetic structure of stem form and branching traits in Douglas-fir seedlings and implications for early selection.** Vargas-Hernandez, J. J., Adams, W. T., and Joyce, D. G. *Silvae Genetica* 52(1):36-44. 2003.

## Nursery Structures & Equipment



**74. Automation in production.** Crockett, J. *Greenhouse Management and Production* 23(11):24-26, 28. 2003. Properly planned, installed and executed environmental control systems can reduce operating costs.

**75. Avoid problems with heaters.** Bartok, J. W., Jr. *Greenhouse Management and Production* 23(8):72-73. 2003.

**76. Discarded plastics could heat greenhouses.** Garthe, J. W. *Greenhouse Management and Production* 23(9):51-52, 54-55. 2003. The development of fuel nuggets as a heating source could be a practical solution for dealing with discarded agricultural plastics.

**77. Louver and vent basics.** Bartok, J. W., Jr. *Greenhouse Management and Production* 23(9):72-73. 2003.

**78. Monitor tree seedling temperature inexpensively with the Thermochron iButton Data logger.** Gasvoda, D. S., Tinus, R. W., and Burr, K. E. *Tree Planters' Notes* 50(1):14-17. 2003.

**79. Reduce shading during winter.** Bartok, J. W., Jr. *Greenhouse Management and Production* 23(12):63-64. 2003.

**80. Reduce your electric bill.** Bartok, J. W., Jr. *Greenhouse Management and Production* 23(7):96-97. 2003.

**81. Replacing a heating system: tips to avoid getting hot under the collar.** Traven, L. R. *Greenhouse Management and Production* 23(8):48-50, 52-54, 56. 2003.

**82. Retractable roof research.** Vollebregt, R. *Greenhouse Grower* 21(7):62, 64, 66-68. 2003.

**83. Save on fuel costs with an efficient energy blanket.** Bartok, J. W., Jr. *Greenhouse Management and Production* 23(10):62-64. 2003.

**84. Simplified scheduling.** Peterson, J. *Greenhouse Grower* 21(12):106-108. 2003. GroTime LLC has taken on the challenge to provide today's growers with a reliable scheduling software service.

**85. © A small-plot seeder and fertilizer applicator.** Engel, R. E., Fischer, T., Miller, J., and Jackson, G. *Agronomy Journal* 95(5):1337-1341. 2003.

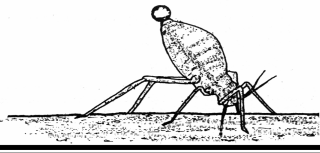
**86. Upgrade your environmental control equipment soon.** Bartok, J. W., Jr. *Greenhouse Management and Production* 23(11):54-55. 2003.

## Outplanting Performance



- 87. © Above-ground biomass predicts growth limitation in amabilis fir and western hemlock seedlings.** Mitchell, A. K., Dunsworth, B. G., Bown, T., and Moran, J. A. *Forestry Chronicle* 79(2):285-290. 2003.
- 88. © Auger planting of oak seedlings.** Heitzman, E. and Grell, A. *Northern Journal of Applied Forestry* 20(2):92-93. 2003.
- 89. Bottomland hardwood afforestation: state of the art.** Gardiner, E. S., Russell, D. R., Oliver, M., and Dorris, L. C., Jr. IN: *Proceedings of a conference on sustainability of wetlands and water resources: how well can riverine wetlands continue to support society into the 21st century?* p. 75-86. USDA Forest Service, Southern Research Station, General Technical Report SRS-50. 2002.
- 90. © Comparing regeneration techniques for afforesting previously farmed bottomland hardwood sites in the lower Mississippi alluvial valley, USA.** Lockhart, B. R., Keeland, B., McCoy, J., and Dean, T. J. *Forestry* 76(2):169-180. 2003.
- 91. Conceptualization and optimization of solar still green house for afforestation in deserts.** Sinha, S., Kumar, S., Hamano, H., Tahara, K., and Kojima, T. *World Resource Review* 12(3):509-520. 2003.
- 92. © An economic and ecological multi-criteria evaluation of reforestation methods to recover burned *Pinus nigra* forests in NE Spain.** Espelta, J. M., Retana, J., and Habrouk, A. *Forest Ecology and Management* 180(1-3):185-198. 2003.
- 93. Effect of peat-based container media on establishment of Scots pine, Norway spruce, and silver birch seedlings.** Heiskanen, J. and Rikala, R. *Tree Planters' Notes* 50(1):28-33. 2003.
- 94. © Effects of nutritional status and seedling size on field performance of *Pinus halepensis* planted on former arable land in the Mediterranean basin.** Puertolas, J., Gil, L., and Pardos, J. A. *Forestry* 76(2):159-168. 2003.
- 95. © Effects of partial cutting and scarification on planted *Picea abies* at mid-elevation sites in south-east Norway.** Granhus, A., Braekke, F. H., Hanssen, K. H., and Haveraaen, O. *Scandinavian Journal of Forest Research* 18(3):237-246. 2003.
- 96. © Effects of pre- and post-planting shading on growth of container Norway spruce seedlings.** Heiskanen, J. *New Forests* 27(2):101-114. 2004.
- 97. © Effects of soil conditions on survival and growth of black willow cuttings.** Schaff, S. D., Pezeshki, S. R., and Shields, F. D., Jr. *Environmental Management* 31(6):748-763. 2003.
- 98. Interaction of initial seedling diameter, fertilization and weed control on Douglas-fir growth over the first four years after planting.** Rose, R. and Ketchum, J. S. *Annals of Forest Science* 60(1):1-11. 2003.
- 99. © Post-harvest regeneration of montane *Abies amabilis* forests in northern Washington, USA.** Elman, E. and Peterson, D. L. *Forestry Chronicle* 79(2):268-272. 2003.
- 100. © Restoration of former agricultural fields in Estonia: comparative growth of planted and naturally regenerated birch.** Jogiste, K., Vares, A., and Sendros, M. *Forestry* 76(2):209-219. 2003.
- 101. © Restoring conifers by natural regeneration on slopes exposed during highway reconstruction, Glacier National Park, Montana, USA.** Shearer, R. C. and Asebrook, J. M. *Forestry* 76(2):199-207. 2003.
- 102. © Root egress and field performance of actively growing *Betula pendula* container seedlings.** Luoranen, J., Rikala, R., and Smolander, H. *Scandinavian Journal of Forest Research* 18(2):133-144. 2003.
- 103. © Soil, hydroperiod and bedding effects on restoring bottomland hardwoods on flood-prone agricultural lands in north Louisiana, USA.** Patterson, W. B. and Adams, J. C. *Forestry* 76(2):181-188. 2003.
- 104. Survival and growth of selected white spruce container stock types in interior Alaska.** Graham, J. S. and Wurtz, T. L. *Tree Planters' Notes* 50(1):44-49. 2003.

## Pest Management



**105. Biological plant protection -- mechanisms and systems for nurseries using beneficial *Trichoderma* fungi.** Hunt, J. S. and Gale, D. S. J. International Plant Propagators' Society, Combined Proceedings 2002, 52:217-222. 2003.

**106. © The content of phenolic compounds and the activity of key enzymes of their synthesis in Scots pine hypocotyls infected with *Fusarium*.** Shein, I. V., Shibistova, O. B., Zrazhevskaya, G. K., Astrakhantseva, N. G., and Polyakova, G. G. Russian Journal of Plant Physiology 50(4):516-521. 2003.

**107. Controlling insect pests with entomopathogenic nematodes.** Bedding, R. International Plant Propagators' Society, Combined Proceedings 2002, 52:92-100. 2003.

**108. Damping-off.** Cram, M. M. Tree Planters' Notes 50 (1):9-13. 2003.

**109. © Effect of organic amendments on soilborne and foliar diseases in field-grown snap bean and cucumber.** Stone, A. G., Vallad, G. E., Cooperband, L. R., Rotenberg, D., Darby, H. M., James, R. V., Stevenson, W. R., and Goodman, R. M. Plant Disease 87:1037-1042. 2003.

**110. Effects of trap color and bait type on collection of Coleoptera in pyramid traps in commercial nurseries.** Braman, S. K., Sparks, B. L., Tedders, W. L., Mizell, R. F., and Hudson, W. G. Journal of Entomological Science 38(2):254-261. 2003.

**111. © Fusiform rust of southern pines: a major success for forest disease management.** Schmidt, R. A. Pathology 93(8):1048-1051. 2003.

**112. © Integration of soil solarization with chemical, biological and cultural control for the management of soilborne diseases of vegetables.** Stevens, C., Khan, V. A., Rodriguez-Kabana, R., Ploper, L. D., Backman, P. A., Collins, D. J., Brown, J. E., Wilson, M. A., and Igwegbe, E. C. K. Plant and Soil 253(2):493-506. 2003.

**113. Plant diagnostics can save money in the propagation nursery.** Barrow, R. International Plant Propagators' Society, Combined Proceedings 2002, 52:141-144. 2003.

**114. Remember whiteflies?** Gilrein, D. Greenhouse Management and Production 23(9):68-71. 2003.

**115. © Replacing methyl bromide for soil disinfection: the Italian experience and implications for other countries.** Gullino, M. L., Camponogara, A., Gasparrini, G., Rizzo, V., Clini, C., and Garibaldi, A. Plant Disease 87(9):1012-1021. 2003.

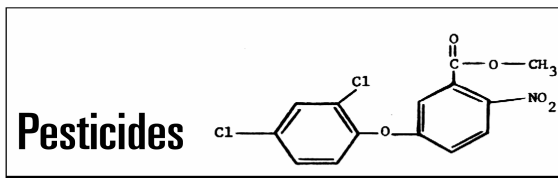
**116. © Response of soybean sudden death syndrome to subsoil tillage.** Vick, C. M., Chong, S. K., Bond, J. P., and Russin, J. S. Plant Disease 87(6):629-632. 2003.

**117. Suitability of southern pines, other selected crops, and nutsedge to a *Longidorus* sp. associated with stunting of loblolly pine seedlings.** Fraedrich, S. W., Cram, M. M., and Handoo, Z. A. Plant Disease 87:1129-1132. 2003.

**118. Tracking *Phytophthora*.** Hausbeck, M. Greenhouse Management and Production 23(8):68, 70. 2003.

**119. Using beneficial nematodes: microscopic worms are an alternative to chemical pest control.** Rafter, D. OAN Digger 47(12):42, 45-48. 2003.

**120. White pine blister rust in North America: past and prognosis.** Kinloch, B. B., Jr. Phytopathology 93 (8):1044-1047. 2003.



**121. Store pesticides properly.** Cloyd, R. Greenhouse Management and Production 23(7):94. 2003.



**122. Assessing the hardiness of Aleppo pine, Maritime pine, and Holm oak seedlings by electrolyte leakage and water potential methods.** Royo, A., Fernandez, M., Gil, L., and Pardos, J. A. Tree Planters' Notes 50(1):38-43. 2003.

**123. © Critical RGC-expected survival models for predicting survival of planted white fir (*Abies concolor* Lindl.) seedlings.** Stone, E. C., Cavallaro, J. I., and Norberg, E. A. *New Forests* 26(1):65-82. 2003.

**124. Daylength, temperature and fertilization effects on desiccation resistance, cold hardiness and root growth potential of *Picea mariana* seedlings.** Colombo, S. J., Glerum, C., and Webb, D. P. *Annals of Forest Science* 60(4):307-317. 2003.

**125. © Dry matter production and allocation in *Eucalyptus cloeziana* and *Eucalyptus argophloia* seedlings in response to soil water deficits.** Ngugi, M. R., Hunt, M. A., Doley, D., Ryan, P., and Dart, P. *New Forests* 26(2):187-200. 2003.

**126. © Early seedling growth of pine (*Pinus densiflora*) and oaks (*Quercus serrata*, *Q. mongolica*, *Q. variabilis*) in response to light intensity and soil moisture.** Beon, M.-S. and Bartsch, N. *Plant Ecology* 167(1):97-105. 2003.

**127. Growth characteristics of root-shoot relations of three birch seedlings raised under different water regimes.** Koike, T., Kitao, M., Quoreshi, A. M., and Matsuura, Y. *Plant and Soil* 255(1):303-310. 2003.

**128. © Improving vigour assessment of pine (*Pinus nigra* Arnold) seedlings before their use in reforestation.** Chiatante, D., Di Iorio, A., Sarnataro, M., and Scippa, G. S. *Plant Biosystems* 136(2):209-216. 2002.

**129. © Influence of nutrient supply on spring frost hardiness and time of bud break in Norway spruce (*Picea abies* (L.) Karst.) seedlings.** Floistad, I. S. and Kohmann, K. *New Forests* 27(1):1-11. 2004.

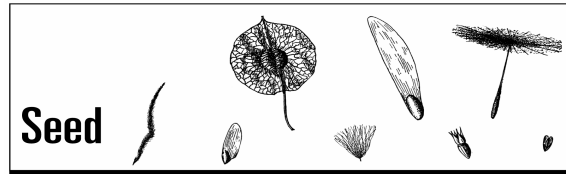
**130. Lighting up profits: photoperiods and flowering.** Runkle, E. and Fisher, P. *Greenhouse Grower* 21(13):118-120, 122. 2003.

**131. Lighting up profits: photosynthesis** Van Iersel, M. *Greenhouse Grower* 21(2):110-112, 114, 116. 2003.

**132. © Low winter soil temperature affects summertime nutrient uptake capacity and growth rate of mountain birch seedlings in the subarctic, Swedish Lapland.** Weih, M. and Karlsson, P. S. *Arctic, Antarctic, and Alpine Research* 34(4):434-439. 2002.

**133. © Predicting the cold hardiness of willow stems using visible and near-infrared spectra and sugar concentrations.** Lennartsson, M. and Ogren, E. *Trees: Structure and Function* 17(5):463-470. 2003.

**134. © Response of *Populus tremuloides*, *Populus balsamifera*, *Betula papyrifera* and *Picea glauca* seedlings to low soil temperature and water-logged soil conditions.** Landhausser, S. M., Silins, U., Lieffers, V. J., and Liu, W. *Scandinavian Journal of Forest Research* 18(5):391-400. 2003.



**135. Assessment of viability of *Acer caesium* and *Ulmus wallichiana* seeds through the tetrazolium test.** Phartyal, S. S., Thapliyal, R. C., Nayal, J. S., and Joshi, G. *Seed Science and Technology* 31(3):691-700. 2003.

**136. © Development of hardwood seed zones for Tennessee using a geographic information system.** Post, L. S., Schlarbaum, S. E., van Manen, F., Cecich, R. A., Saxton, A. M., and Schneider, J. F. *Southern Journal of Applied Forestry* 27(3):172-175. 2003.

**137. Does acorn weight influence germination and subsequent seedling growth of central Himalayan oaks?** Purohit, V. K., Tamta, S., Nandi, S. K., Rikhari, H. C., and Palni, L. M. S. *Journal of Tropical Forest Science* 15(3):483-492. 2003.

**138. © The effect of moisture content and prechill duration on dormancy breakage of Douglas fir seeds (*Pseudotsuga menziesii* var. *menziesii* [Mirb.] Franco).** Gosling, P. G., Samuel, Y., and Peace, A. *Seed Science Research* 13(3):239-246. 2003.

**139. © Effects of desiccation on the physiology and biochemistry of *Quercus alba* acorns.** Connor, K. F. and Sowa, S. *Tree Physiology* 23(16):1147-1152. 2003.

**140. Increasing the temperature of the water soak preceding moist-chilling promotes dormancy-termination of seeds of western white pine (*Pinus monticola* Dougl.).** Feurtado, J. A., Xia, J.-H., Ma, Y., and Kermod, A. R. *Seed Science and Technology* 31(2):275-288. 2003.



**141. Maximize perennial germination: how to successfully germinate difficult species.** Pyle, A. R. *Greenhouse Management and Production* 23(12):24-30. 2003.

**142. The role of smoke in dormancy release for horticultural plants.** Dixon, K. *International Plant Propagators' Society, Combined Proceedings 2002*, 52:581-585. 2003.

**143. Small batch seed propagation of various *Pinus* species.** Kirk, S. D. and Coggeshall, M. V. *International Plant Propagators' Society, Combined Proceedings 2002*, 52:402-405. 2003.

**144. © Temperature and seed weight affect the germination of peach rootstock seeds and the growth of rootstock seedlings.** Malcolm, P. J., Holford, P., McGlasson, W. B., and Newman, S. *Scientia Horticulturae* 98(3):247-256. 2003.

**145. Use of computer imaging to evaluate the initial stages of germination in woody tree seeds.** Dutt, M. and Geneve, R. L. *International Plant Propagators' Society, Combined Proceedings 2002*, 52:484-488. 2003.



**146. © Application of composted urban residue enhanced the performance of afforested shrub species in a degraded semiarid land.** Caravaca, F., Figueroa, D., Alguacil, M. M., and Roldan, A. *Bioresource Technology* 90(1):65-70. 2003.

**147. Bark versus municipal compost in paper mill waste substrates for container culture.** Chong, C. *International Plant Propagators' Society, Combined Proceedings 2002*, 52:531-534. 2003.

**148. Chemical and non-chemical alternatives to methyl bromide fumigation of soil for strawberry production.** Lopez-medina, J., Lopez-Aranda, J. M., Medina, J. J., Miranda, L., and Flores, F. *Journal of Horticultural Science and Biotechnology* 78(5):597-604. 2003.

**149. © The effect of soil compaction, profile disturbance and fertilizer application on the growth of eucalypt seedlings in two glasshouse studies.** Williamson, J. R. and Neilsen, W. A. *Soil and Tillage Research* 71(2):95-107. 2003.

**150. Mulch a growth control mechanism.** Andrews, G. *International Plant Propagators' Society, Combined Proceedings 2002*, 52:63-71. 2003.

**151. The myth of polyacrylamide hydrogels.** Chalker-Scott, L. *Washington State Nursery and Landscape Association (WSNLA) B&B* 53(6):4. 2001. Available at: [www.cfr.washington.edu/research.mulch](http://www.cfr.washington.edu/research.mulch) (under Horticultural Myths).

**152. Physical properties of container media.** Altland, J. *OAN Digger* 47(9):48-53. 2003.

**153. Regional components could meet your growing media needs.** Jacques, D. J., Morgan, N., Thomas, M., Walden, R., and Vetanovetz, R. *Greenhouse Management and Production* 23(9):28-30, 32-34, 36. 2003.

**154. © Sensitivity analysis of predicted change in soil carbon following afforestation.** Paul, K. I., Polglase, P. J., and Richards, G. P. *Ecological Modeling* 164(2-3):137-152. 2003.

**155. © Soil moisture dynamics in a clear-felled area after planting spruce seedlings.** Prax, A. and Palat, M. *Ekologia (Bratislava)* 21 Suppl:88-97. 2002.

**156. A talk on compost.** Prosser, D. and Prosser, H. *International Plant Propagators' Society, Combined Proceedings 2002*, 52:183-185. 2003.

**157. Use of waste and compost in propagation: challenges and constraints.** Chong, C. *International Plant Propagators' Society, Combined Proceedings 2002*, 52:410-414. 2003.



**158. Effect of foliar spray of growth hormones on seedling growth attributes in *Albizia lebbek*.** Ilango, K., Vanangamudi, M., and Vanangamudi, K. *Journal of Tropical Forest Science* 15(1):1-5. 2003.

**159. Effects of nursery beds and different sizes of polythene bags on germination, growth, and development of cacao (*Theobroma cacao* L.) seedlings.** Ndubuaku, U. M. *Tropical Agriculture (Trinidad)* 80(1):54-58. 2003.

**160. © Germination of four species of the genus *Mimosa* (Leguminosae) in a semi-arid zone of central Mexico.** Orozco-Almanza, M. S., Ponce de Leon-Garcia, L., Grether, R., and Garcia-Moya, E. *Journal of Arid Environments* 55(1):75-92. 2003.

**161. © Growth and quality of *Acacia nilotica* seedlings raised in root trainers with potting media varying in physical and chemical properties in arid zone.** Prasad, R., Lohra, R. R., Mertia, R. S., Rathore, S. S., Shukla, U., and Kumar S. *Annals of Arid Zone* 41(2):153-160. 2002.

**162. © Halophyte and glycophyte salt tolerance at germination and the establishment of halophyte shrubs in saline environments.** Malcolm, C. V., Lindley, V. A., O'Leary, J. W., Runciman, H. V., and Barrett-Lennard, E. G. *Plant and Soil* 253(1):171-185. 2003.

**163. Optimisation of inoculation of *Leucaena leucocephala* and *Acacia mangium* with rhizobium under greenhouse conditions.** Diouf, D., Forestier, S., Neyra, M., and Lesueur, D. *Annals of Forest Science* 60(4):379-384. 2003.

**164. © The potential of mini-grafting for large-scale production of *Prosopis alba* clones.** Ewens, M. and Felker, P. *Journal of Arid Environments* 55(2):379-387. 2003.

**165. © Preparation for propagation: understanding germination of giwa (*Astrocaryum standleyanum*), wagara (*Sabal mauritiformis*), and eba (*Socratea exorrhiza*) for future cultivation.** Potvin, C., Cansari, R., Hutton, J., Caisamo, I., and Pacheco, B. *Biodiversity and Conservation* 12(11):2161-2171. 2003.

**166. Provenance variation in growth, physiology, anatomical characteristics and foliar nutrient status of teak (*Tectona grandis*) seedlings.** Jayasankar, S., Sudhakara, K., and Babu, L. C. *Journal of Tropical Forest Science* 15(1):37-50. 2003.

**167. Refrigerated storage of seeds of *Araucaria angustifolia* (Bert.) O. Kuntze over a period of 24 months.** Piriz Carrillo, V., Chaves, A., Fassola, H., and Mugridge, A. *Seed Science and Technology* 31(2):411-421. 2003.

**168. Response of tamarind (*Tamarindus indica*) to presowing seed treatment with growth stimulants.** Vanangamudi, K. and Vanangamudi, M. *Journal of Tropical Forest Science* 15(1):6-11. 2003.

**169. Scarification of seeds of *Acacia angustissima* (Mill.) Kuntze and its effect on germination.** Rincon-Rosales, R., Culebro-Espinosa, N. R., Gutierrez-Miceli, F. A., and Dendooven, L. *Seed Science and Technology* 31(2):301-307. 2003.

**170. © Seed source (provenance) variation in *Acacia nilotica* (L.) Willd. for salinity tolerance.** Bimlendra, K., Toky, O. P., and Babber, S. *Annals of Arid Zone* 41(2):161-167. 2002.

**171. Studies on enhancing seed germination and seedling vigour in teak (*Tectona grandis*).** Manonmani, V. and Vanangamudi, K. *Journal of Tropical Forest Science* 15(1):51-58. 2003.

**172. © Variability in drupe characters and their relationships on seed germination in teak (*Tectona grandis* L.f.)** Sivakumar, V., Parthiban, K. T., Singh, B. G., Gnanambal, V. S., Anandalakshmi, R., and Geetha, S. *Silvae Genetica* 51(5-6):232-237. 2002.

**173. © Vegetative propagation of the threatened African wild olive [*Olea europaea* L. subsp. *cuspidata* (Wall. ex DC.) Ciffieri].** Negash, L. *New Forests* 26(2):137-146. 2003.



**174. Air layering: a rooting alternative.** Byrnes, B. *International Plant Propagators' Society, Combined Proceedings 2002*, 52:450-452. 2003.

**175. Comparative studies on the rooting of *Betula* species.** Barnes, H. W. *International Plant Propagators' Society, Combined Proceedings 2002*, 52:543-547. 2003.

**176. © A comparison of pre-planting treatments on hardwood cuttings of four hybrid poplar clones.** Desrochers, A. and Thomas, B. R. *New Forests* 26(1):17-32. 2003.

**177. Effect of soil temperature on rooting and early establishment of balsam poplar cuttings.** Landhausser, S. M. *Tree Planters' Notes* 50(1):34-37. 2003.

**178. Evaluation of an alternative method of rooting hormone application in cutting propagation.** Blythe, E. K., Sibley, J. L., and Tilt, K. M. International Plant Propagators' Society, Combined Proceedings 2002, 52:393-399. 2003.

**179. Forcing epicormic sprouts on branch segments of adult hardwoods for softwood cuttings.** Van Sambeek, J. W., Preece, J. E., and Coggeshall, M. V. International Plant Propagators' Society, Combined Proceedings 2002, 52:4170-424. 2003.

**180. Hardwood cuttings for erosion control.** Bir, R. E., Calabria, J., and Conner, J. International Plant Propagators' Society, Combined Proceedings 2002, 52:481-483. 2003.

**181. An insight to biochemical basis of root formation on cuttings: a review.** Bhattacharya, S. International Plant Propagators' Society, Combined Proceedings 2002, 52:594-598. 2003.

**182. Practical workshop: how to make a hormone.** Elliot, J. International Plant Propagators' Society, Combined Proceedings 2002, 52:181-182. 2003.

**183. Propagation of *Quercus virginiana* by cuttings.** Reeves, B. International Plant Propagators' Society, Combined Proceedings 2002, 52:448-449. 2003.

**184. Propagation protocol for aspen using root cuttings.** Luna, T. Native Plants Journal 4(2):129-131. 2003.

**185. Propagation protocol for bareroot willows in Ontario using hardwood cuttings.** Mathers, T. Native Plants Journal 4(2):132-136. 2003.

**186. Propagation protocol for container willows and poplars using mini-cuttings.** Dumroese, R. K., Wenny, D. L., and Morrison, S. J. Native Plants Journal 4(2):137-139. 2003.

**SO. Propagating plantation trees from cuttings in containers.** Nelson, W. 888 Management Ltd., Christchurch, New Zealand. 18 p. 2003. Contents: Why use cuttings and are clonal methods inherently risky? Why containerise methods? Propagation strategies (Eucalypts, Pines, Acacias); Nursery layout and process flow; Rooting physiology and timing; Nursery procedure after rooting; Hygiene; Record keeping and genetic integrity. ORDER FROM: [www.lulu.com/warricknelson](http://www.lulu.com/warricknelson). \$14.95.

## Water Management



**187. Clean up your act.** Calkins, B. Greenhouse Grower 21(8):60, 62. 2003. Proper treatment of closed-system irrigation water and runoff water is critical for growers using safe practices.

**188. Designing the best possible conservation buffers.** Durham, S. Agricultural Research 51(12):4-7. 2003.

**189. © Efficacy of chlorine on multiple species of *Phytophthora* in recycled nursery irrigation water.** Hong, C. X., Richardson, P. A., Kong, P., and Bush, E. A. Plant Disease 87(10):1183-1189. 2003.

**190. Evaluating the application uniformity of a sprinkler system for containerized plants.** Lane, B. C. International Plant Propagators' Society, Combined Proceedings 2002, 52:616-621. 2003.

**191. A grower's solution to nutrient and water management.** Overdevest, E. International Plant Propagators' Society, Combined Proceedings 2002, 52:406-409. 2003.

**192. Impact of afforestation on the limitation of the spread of the pollutions in ground water and in soils.** Szajdak, L., Zyczynska-Baloniak, I., and Jaskulska, R. Polish Journal of Environmental Studies 12(4):453-459. 2003.

**193. Irrigation practices can substantially reduce runoff.** Newman, J. Greenhouse Management and Production 23(10):58-60. 2003.

**194. Optimising moisture retention in growing media.** Reynolds, R. B. International Plant Propagators' Society, Combined Proceedings 2002, 52:121-125. 2003.

**195. © Runoff responses to afforestation in a watershed of the Loess Plateau, China.** Huang, M., Zhang, L., and Gallichand, J. Hydrological Processes 17(13):2599-2609. 2003.

**196. Using reclaimed water in production of containerized nursery stock.** White, M. G. International Plant Propagators' Society, Combined Proceedings 2002, 52:643. 2003.

**197. Water quality.** Mathers, H. American Nurseryman 198(5):32-34, 36-37. 2003. Managing what's in your irrigation water should not only improve your plants' appearance, it should enhance their health.

## Weed Control



**198. Be aware of herbicide residues in field soils.** Altland, J. OAN Digger 47(11):48-49, 51-53. 2003.

**199. Controlling stubborn weeds.** Altland, J. OAN Digger (Farwest Edition) 47(8):51-55. 2003.

**200. © Effect of air temperature, rain and drought on hot water weed control.** Hansson, D. and Mattsson, J. E. Weed Research 43(4):245-251. 2003.

**201. Herbicide efficacy using a wet-blade application system.** Henson, S. E., Skroch, W. A., Burton, J. D., and Worsham, A. D. Weed Technology 17(2):320-324. 2003. Development of a fluid application system from mower cutting blades.

**202. © The impact of timing and duration of grass control on growth of a young *Eucalyptus globulus* Labill. plantation.** Adams, P. R., Beadle, C. L., Mendham, N. J., and Smethurst, P. J. New Forests 26(2):147-165. 2003.

**203. Light, temperature, seed burial, and mulch effects on mulberry weed (*Fatoua villosa*) seed germination.** Penny, G. M. and Neal, J. C. Weed Technology 17(2):213-218. 2003.

**204. Nonchemical weed control in nursery containers.** Chong, C. and Purvis, P. International Plant Propagators' Society, Combined Proceedings 2002, 52:528-531. 2003.

**205. Pests in pots.** Altland, J. American Nurseryman 197(11):18-20, 22. 2003. Sanitation and herbicide management are essential for improving weed control in containers.

**206. © Ponderosa pine and lodgepole pine growth response to one-time application of herbicide during seedling establishment in western Montana.** Keyser, C. E. and Milner, K. S. Western Journal of Applied Forestry 18(3):149-154. 2003.

**207. Post-emergent herbicides: the basics.** Altland, J. OAN Digger 47(7):44-49. 2003.

**208. Relating simazine performance to irrigation management.** DaSilva, a., Garretson, C., Troiano, J., Ritenour, G., and Krauter, C. Weed Technology 17(2):330-337. 2003.

**209. Selecting pre-emergence herbicides.** Altland, J. American Nurseryman 198(4):26-28, 30, 32. 2003.

**210. Selective exposure of yellow (*Cyperus esculentus*) and purple nutsedge (*Cyperus rotundus*) to postemergence treatments of CGA-362622, imazaquin, and MSMA.** McElroy, J. S., Yelverton, F. H., Troxler, S. C., and Wilcut, J. W. Weed Technology 17(3):554-559. 2003.

**211. Spray volume, formulation, ammonium sulfate, and nozzle effects on glyphosate efficacy.** Ramsdale, B. K., Messersmith, C. G., and Nalewaja, J. D. Weed Technology 17(3):589-598. 2003.

**212. Surfactants affect herbicides on kochia (*Kochia scoparia*) and Russian thistle (*Salsola iberica*).** Harbour, J. D., Messersmith, C. G., and Ramsdale, B. K. Weed Science 51(3):430-434. 2003.

**213. Top 10 reasons your herbicide failed.** Altland, J. OAN Digger 47(5):44-48. 2003.

# Literature Order Form

## Winter 2004

Please fill out a separate order form for each person ordering literature. Write in the number or letter of the articles in which you are interested in the spaces at the bottom of this page. Note that we will only provide free copies of the first 25! For items that require a copyright fee, you will receive the title page with abstract and ordering instructions if you want the entire article. Fax or mail this form to:

Forest Nursery Notes  
J.H. Stone Nursery  
2606 Old Stage Rd.  
Central Point, OR 97502  
TEL: 541.858.6166  
FAX: 541.858.6110  
E-mail: rewatson@fs.fed.us

**Name:** \_\_\_\_\_ **Position:** \_\_\_\_\_

**Department:** \_\_\_\_\_ **Nursery/Company:** \_\_\_\_\_

**Mailing address:** \_\_\_\_\_

**Street Address:** \_\_\_\_\_

**City:** \_\_\_\_\_ **State/Province:** \_\_\_\_\_

**Country:** \_\_\_\_\_ **Zip/Postal Code:** \_\_\_\_\_

**Telephone:** \_\_\_\_\_ **FAX:** \_\_\_\_\_

**E-mail:** \_\_\_\_\_ **Website:** \_\_\_\_\_

In order to keep costs reasonable we will provide free copies of the first 25 articles. Fill in the number or letter each article from the New Nursery Literature section in the following spaces:

\_\_\_\_\_

\_\_\_\_\_

\_\_\_\_\_