



New Nursery Literature

Copies of the following journal articles or publications are free and can be ordered using the Literature Order Form on the last page of this section. Just write in the appropriate number or letter on the form and return it to us. Note that there are three restrictions:

- 1. Limit in the Number of Free Articles:** In an effort to reduce mailing costs, we are limiting the number of free articles that can be ordered through the FNN literature service. All subscribers will be restricted to 25 free articles per issue.
- 2. Copyrighted Material.** Items with © are copyrighted and require a fee for each copy, so only the title page and abstract will be provided through this service. If you want the entire article, then you can order a copy from a library service.
- 3. Special Orders (SO).** Special orders are books or other publications that, because of their size or cost, require special handling. For some, the Forest Service has procured copies for free distribution, but others will have to be purchased. Prices and ordering instructions are given following each listing in the New Nursery Literature section.



Bareroot Production

1. Growth comparisons between open-pollinated progeny of sugar maple grown under shade and in full sunlight. Clark, S. L. and Schlarbaum, S. E. *HortScience* 38(2):302-303. 2003.

2. A history of transplanting. Landis, T. D. and Scholtes, J. R. IN: National proceedings: Forest and Conservation Nursery Associations -- 2002. Riley, L.E., Dumroese, R.K. and Landis, T.D., technical coordinators. USDA Forest Service, Rocky Mountain Research Station, Proceedings RMRS-P-28, p. 89-97. 2003.

3. Managing crop uniformity in Weyerhaeuser nurseries. Wallich, E. and Stevens, T. IN: National proceedings: Forest and Conservation Nursery Associations -- 2002. Riley, L.E., Dumroese, R.K. and Landis, T.D., technical coordinators. USDA Forest Service, Rocky Mountain Research Station, Proceedings RMRS-P-28, p. 144-150. 2003.

4. Phytotoxicity with metam sodium. Buzzo, R. J. IN:

National proceedings: Forest and Conservation Nursery Associations -- 2002. Riley, L.E., Dumroese, R.K. and Landis, T.D., technical coordinators. USDA Forest Service, Rocky Mountain Research Station, Proceedings RMRS-P-28, p. 79-83. 2003.

5. Producing quality transplant seedlings: bareroot to bareroot and container to bareroot. Crockett, T. IN: National proceedings: Forest and Conservation Nursery Associations -- 2002. Riley, L.E., Dumroese, R.K. and Landis, T.D., technical coordinators. USDA Forest Service, Rocky Mountain Research Station, Proceedings RMRS-P-28, p. 105-107. 2003.



Business Management

6. Nursery accreditation. Karrfalt, R. P. IN: National proceedings: Forest and Conservation Nursery Associations -- 2002. Riley, L.E., Dumroese, R.K. and Landis, T.D., technical coordinators. USDA Forest Service, Rocky Mountain Research Station, Proceedings RMRS-P-28, p. 43-46. 2003.

7. Nursery cost-estimating at the NRCS Bridger Plant Materials Center. Scianna, J. D. IN: National

proceedings: Forest and Conservation Nursery Associations -- 2002. Riley, L.E., Dumroese, R.K. and Landis, T.D., technical coordinators. USDA Forest Service, Rocky Mountain Research Station, Proceedings RMRS-P-28, p. 133-138. 2003.

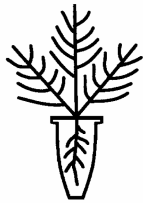
8. The nursery management information system (NMIS) at J. Herbert Stone Nursery using MS

Access. Davis, D. B. IN: National proceedings: Forest and Conservation Nursery Associations -- 2002. Riley, L.E., Dumroese, R.K. and Landis, T.D., technical coordinators. USDA Forest Service, Rocky Mountain Research Station, Proceedings RMRS-P-28, p. 130-132. 2003.

9. RIMS, a reforestation information management system. Rudeen, D. S. IN: National proceedings: Forest and Conservation Nursery Associations -- 2002. Riley, L.E., Dumroese, R.K. and Landis, T.D., technical coordinators. USDA Forest Service, Rocky Mountain Research Station, Proceedings RMRS-P-28, p. 127-129. 2003.

10. Seedling inventory tracking. Kitchen, J. IN: National proceedings: Forest and Conservation Nursery Associations -- 2002. Riley, L.E., Dumroese, R.K. and Landis, T.D., technical coordinators. USDA Forest Service, Rocky Mountain Research Station, Proceedings RMRS-P-28, p. 139-143. 2003.

Container Production



11. Aspects to make plug-to-plus transplanting a success, or, "If you think that something small cannot make a difference -- try going to sleep with a mosquito in the room." Pelton, S. IN: National proceedings: Forest and Conservation Nursery Associations -- 2002. Riley, L.E., Dumroese, R.K. and Landis, T.D., technical coordinators. USDA Forest Service, Rocky Mountain Research Station, Proceedings RMRS-P-28, p. 117-123. 2003.

12. Container-to-container transplanting: operations and equipment. Bartok, J. W., Jr. IN: National proceedings: Forest and Conservation Nursery Associations -- 2002. Riley, L.E., Dumroese, R.K. and Landis, T.D., technical coordinators. USDA Forest Service, Rocky Mountain Research Station, Proceedings RMRS-P-28, p. 124-126. 2003.

13. Copper-coated containers and their impact on the environment. Crawford, M. A. IN: National proceedings: Forest and Conservation Nursery Associations -- 2002. Riley, L.E., Dumroese, R.K. and Landis, T.D., technical coordinators. USDA Forest Service, Rocky Mountain Research Station, Proceedings RMRS-P-28, p. 76-78. 2003.

14. Economic evaluation of container seedling packing and disinfection machinery. Rantala, J., Vaatainen, K., Kiljunen, N., and Harstela, P. *Silva Fennica* 37(1):121-127. 2002.

15. © Leaching of propiconazole and chlorothalonil during production of *Pinus sylvestris* seedlings in containers. Juntunen, M.-L. and Kitunen, V. *Scandinavian Journal of Forest Research* 18(1):45-53. 2003.

16. Precision technology for controlling soil moisture with plug seedlings. Murase, H., Matsushita, Y., and Murakami, K. IFAC Intelligent Control for Agricultural Applications, Bali, Indonesia, 2001. 4 p. 2001.

17. Supplemental lighting: can it help you grow better crops? Both, A. J. *Greenhouse Management and Production* 23(3):34-37. 2003.

SO. Plug and transplant production: a grower's guide. Styer, R. C. and Koranski, D. S. Ball Publishing. 315 p. 1997. ORDER FROM: Ball Publishing, 335 North River Street, Batavia, IL 60510. \$69.95. www.ballpublishing.com/commerce CONTENTS: Greenhouse structure and equipment; Stage zero -- equipment and techniques; Seed physiology; Seed types; Water quality; Media quality; Germination facilities; Environment; Moisture management; Fertilizers and nutrition; Controlling shoot and root growth; Height control; Diseases and insects; Holding plugs; Scheduling plugs and finished bedding plants; Transplanting plugs.

Diverse Species



18. © A 10-year study on techniques for vegetation restoration in a desertified salt lake area. Gao, Y., Qiu, G. Y., Shimizu, H., Tobe, K., Sun, B., and Wang, J. *Journal of Arid Environments* 52(4):483-497. 2002.

19. © Contrasting seed germination patterns for

intracontinental disjuncts of *Heuchera* (Saxifragaceae) in North America: the eastern temperate *H. parviflora* and western montane *H. cylindrica*. Hidayati, S. N. and Walck, J. L. Canadian Journal of Botany 80(11):1185-1192. 2002.

20. Double dibble: companion planting techniques for establishing rare plants. Garnett, W. Native Plants Journal 4(1):37-38. 2003. Planting 2 species together to provide microclimatic conditions that mimic natural succession.

21. Effects of discing saltcedar seedlings during riparian restoration efforts. Smith, L. M., Sprenger, M. D., and Taylor, J. P. Southwestern Naturalist 47(4):598-601. 2002.

22. Effects of temperature on germination of 10 native legume species. McGraw, R. L., Shockley, F. W., and Elam, T. K. Native Plants Journal 4(1):5-9. 2003.

23. © The effects of thermal scarification and seed storage on germination of four heathland species. Valbuena, I. and Vera, M. L. Plant Ecology 161(1):137-144. 2002.

24. Fencing is key to native plant restoration in Hawaii. Luna, T. Native Plants Journal 4(1):42-45. 2003.

25. Flaming Fabaceae -- using an alcohol flame to break seed dormancy. Sugii, N. Native Plants Journal 4(1):46-47. 2003.

26. Modifying blender blades for seed cleaning. Thomas, D. Native Plants Journal 4(1):72-73. 2003. Use plastic coating on sharp blender blades that are used to process seeds in fruit.

27. Native plant restoration on Hawaii. Luna, T. Native Plants Journal 4(1):23-29, 31-36. 2003.

28. Observations on *Bromus carinatus* and *Elymus glaucus* seed storage and longevity. Dremann, C. Native Plants Journal 4(1):61-64. 2003.

29. © Physiological ecology of seed germination for the columnar cactus *Stenocereus queretaroensis*. De la Barrera, E. and Nobel, P. S. Journal of Arid Environments 53(3):297-306. 2002.

30. Production and conditioning of winterfat seeds (*Krascheninnikovia lanata*). Majerus, M. Native Plants Journal 4(1):10-15. 2003.

31. Propagation protocol for endangered Mauna Loa silversword. Moriyasu, P. and Robichaux, R. Native Plants Journal 4(1):39-41. 2003.

32. The Pu 'Ole 'Ole blows and 'Awa is poured. Maui Kumu Keli'i Tau'a welcomes Hawaiian seedlings back to Auwahi. Nedeurism A. C. Native Plants Journal 4(1):48-51. 2003. A traditional Hawaiian blessing was performed before beginning restoration activities in the dry forest habitats on Maui.

33. © Responses of dormant heather (*Calluna vulgaris*) seeds to light, temperature, chemical and advancement treatments. Thomas, T. H. and Davies, I. Plant Growth Regulation 37(1):23-29. 2002.

34. © Seed dormancy, after-ripening and light requirements of four annual Asteraceae in southwestern Australia. Schutz, W., Milberg, P., and Lamont, B. B. Annals of Botany 90(6):707-714. 2002.

35. Seed germination experiments in *Opuntia* (Cactaceae) of the northern Chihuahuan desert. Pendley, G. K. Haseltonia 8:42-50. 2001.

36. Study cases of native plant projects for Mapuche communities in the southern region of Chile. Ovalle, P., Neira, Z., and Nunez, P. IN: National proceedings: Forest and Conservation Nursery Associations -- 2002. Riley, L.E., Dumroese, R.K. and Landis, T.D., technical coordinators. USDA Forest Service, Rocky Mountain Research Station, Proceedings RMRS-P-28, p. 165-170. 2003.

37. Sulfuric acid scarification of wax currant seeds from New Mexico. Rosner, L. S., Harrington, J. T., Dreesen, D. R., and Murray, L. Native Plants Journal 4(1):65-71. 2003.

38. Survival of black-eyed susan from different regional seed sources under low and high input systems. Marois, J. J. and Norcini, J. G. HortTechnology 13(1):161-165. 2003.



39. The big three: pay attention to the key elements -- nitrogen, phosphorus and potassium. Altland, J. The Digger 47(2):44, 46-48. 2003.

40. © Development of Douglas-fir seedling root architecture in response to localized nutrient supply. Jacobs, D. F., Rose, R., and Haase, D. L. Canadian Journal of Forest Research 33(1):118-125. 2003.

41. Ecophysiological response of Douglas-fir seedlings to polymer-coated fertilizers. Jacobs, D. F., Rose, R., and Haase, D. L. IN: National proceedings: Forest and Conservation Nursery Associations -- 2002. Riley, L.E., Dumroese, R.K. and Landis, T.D., technical coordinators. USDA Forest Service, Rocky Mountain Research Station, Proceedings RMRS-P-28, p. 84-88. 2003.

42. Elements of success: plant performance is complicated, so put your plants to the test. Altland, J. The Digger 47(1):42, 44, 46, 48. 2003.

43. Hardening fertilization and nutrient loading of conifer seedlings. Dumroese, R. K. IN: National proceedings: Forest and Conservation Nursery Associations -- 2002. Riley, L.E., Dumroese, R.K. and Landis, T.D., technical coordinators. USDA Forest Service, Rocky Mountain Research Station, Proceedings RMRS-P-28, p. 31-36. 2003.

44. Incorporating controlled-release fertilizer technology into outplanting. Jacobs, D. F., Rose, R., and Haase, D. L. IN: National proceedings: Forest and Conservation Nursery Associations -- 2002. Riley, L.E., Dumroese, R.K. and Landis, T.D., technical coordinators. USDA Forest Service, Rocky Mountain Research Station, Proceedings RMRS-P-28, p. 37-42. 2003.

45. Less is more. Cabrera, R. I. American Nurseryman 197(8):40-42, 44-45. 2003. Overfertilization is likely to reduce plant growth as well as negatively impact the environment.

46. Micronutrients in nursery production. Altland, J. The Digger 47(6):42-44, 46-47. 2003.

47. © Nitrogen accumulation by conifer seedlings and competitor species from ¹⁵Nitrogen-labeled controlled-release fertilizer. Hags, R. D., Knight, J. D., and Van Rees, K. C. J. Soil Science Society of America 67(1):300-308. 2003.

48. © Precision agriculture: a challenge for crop nutrition management. Robert, P. C. Plant and Soil 247(1):143-149. 2002.

49. Putting the brake pedal to the metal: Oregon's new fertilizer laws target heavy metals and collect

fees from industry for program, research. Sivesind, C. The Digger 47(2):28, 31, 34. 2003.

50. Remote sensing for nitrogen management. Scharf, P. C., Schmidt, J. P., Kitchen, N. R., Sudduth, K. A., Hong, S. Y., Lory, J. A., and Davis, J. G. Journal of Soil and Water Conservation 57(6):518-524. 2002.

51. Secondary, but still important: calcium, magnesium and sulfur, the lesser macronutrients. Altland, J. The Digger 47(3):51-54. 2003.

52. © Seedling sweetgum (*Liquidambar styraciflua* L.) half-sib family response to N and P fertilization: growth, leaf area, net photosynthesis and nutrient uptake. Chang, S. X. Forest Ecology and Management 173(1-3):281-291. 2003.

53. © Stimulatory effects of aluminum on growth of sugar maple seedlings. Schier, G. A. and McQuattie, C. J. Journal of Plant Nutrition 25(11):2583-2589. 2002.

SO. The magic of nutrient formulation: nutrient management from the plants eye view. Muckle, M. E. Growers Press Inc. 175 p. 1999. ORDER FROM: Growers Press Inc., P.O. Box 189, Princeton, B.C. Canada VOX 1WO. Phone: 250-295-7755. grower@nethop.net. CHAPTERS: A traditional introduction to plant nutrition; The ingredients of nutrient formulation; Making nutrient solutions from existing formulas; The essential elements and their roles in plant growth; The beneficial elements; Plant hormones - stress relief of plants; Life from the plant's eye view; Understanding your water analysis; Quality assurance; Professional water management; Life in the root zone; Irrigation systems; Creating an optimum root zone environment; Creating your own nutrient formulas; The specifics of root zone management.

General and Miscellaneous



54. © Co-benefits from carbon sequestration in forests: evaluating reductions in agricultural externalities from an afforestation policy in Wisconsin. Plantinga, A. J. and Wu, J. Land Economics 79(1):74-85. 2003.

55. Companies offer new 'lumber'. Bartok, J. W., Jr. Greenhouse Management and Production 23(3):63-64. 2003.

56. © The decline of southern yellow pine timberland. South, D. B. and Buckner, E. R. Journal of Forestry 101(1):30-35. 2003.

57. © Does Canada really need publicly funded forestry research or can universities really do it all? Noland, T. L. and Hopkin, A. A. Forestry Chronicle 79 (1):2, 4. 2003.

58. © Effects of deforestation and reforestation on landscape spatial structure in boreal Saskatchewan, Canada. Fitzsimmons, M. Forest Ecology and Management 174(1-3):577-592. 2003.

59. The employment and output effects of changing patterns of afforestation in Scotland. Eiser, D. and Roberts, D. Journal of Agricultural Economics 53(1):65-81. 2002.

60. Florida and Florida forests: a sense of place. Smith, W. H. IN: National proceedings: Forest and Conservation Nursery Associations -- 2002. Riley, L.E., Dumroese, R.K. and Landis, T.D., technical coordinators. USDA Forest Service, Rocky Mountain Research Station, Proceedings RMRS-P-28, p. 4-7. 2003.

61. Forest nurseries in Finland. Poteri, M. IN: National proceedings: Forest and Conservation Nursery Associations -- 2002. Riley, L.E., Dumroese, R.K. and Landis, T.D., technical coordinators. USDA Forest Service, Rocky Mountain Research Station, Proceedings RMRS-P-28, p. 59-63. 2003.

62. © Saskatchewan forest carbon sequestration project. Lempriere, T. C., Johnston, M., Willcocks, A., Bogdanski, B., Bisson, D., Apps, M., and Bussler, O. Forestry Chronicle 78(6):843-849. 2002.

63. Top 10 statements that persuaded you to become a nursery manager. Gilly, S. IN: National proceedings: Forest and Conservation Nursery Associations -- 2002. Riley, L.E., Dumroese, R.K. and Landis, T.D., technical coordinators. USDA Forest Service, Rocky Mountain Research Station, Proceedings RMRS-P-28, p. 3. 2003.

64. Travels among the Gwich'in. Gildart, B. and Gildart, J. IN: National proceedings: Forest and Conservation Nursery Associations -- 2002. Riley, L.E., Dumroese, R.K. and Landis, T.D., technical coordinators. USDA Forest Service, Rocky Mountain

Research Station, Proceedings RMRS-P-28, p. 162-164. 2003.

SO. National proceedings: Forest and Conservation Nursery Associations -- 2002. Riley, L. E., Dumroese, R. K., and Landis, T. D. USDA Forest Service, Rocky Mountain Research Station, Proceedings RMRS-P-28. 194 p. 2003. Each paper is entered individually in this issue of Forest Nursery Notes. Available online at: <http://www.fcnanet.org/proceedings/2002>
ORDER COMPLETE PROCEEDINGS FROM:
Richard D. Schneider, Publications, USDA Forest Service, Rocky Mountain Research Station, 240 W. Prospect Rd., Ft. Collins, CO 80526-2098



65. Clonal forestry -- who are you kidding? Scandinavian Journal of Forest Research 17(6):485. 2002.

66. © Effects of inbreeding on coastal Douglas-fir: nursery performance. Woods, J. H., Wang, T., and Aitken, S. N. Silvae Genetica 51(4):163-170. 2002.

67. © Genetic variation in drought tolerance in *Picea abies* seedlings and its relationship to growth in controlled and field environments. Sonesson, J. and Eriksson, G. Scandinavian Journal of Forest Research 18 (1):7-18. 2003.

68. © Genetic variation in height growth among populations of eastern white pine (*Pinus strobus* L.) in Ontario. Joyce, D. G., Lu, P., and Sinclair, R. W. Silvae Genetica 51(4):136-142. 2002.

69. © Genetic variation in nutrient utilization and growth traits in *Picea abies* seedlings. Mari, S., Jansson, G., and Jonsson, A. Scandinavian Journal of Forest Research 18(1):19-28. 2003.

70. © Marker trait association for autumn cold acclimation and growth rhythm in *Pinus sylvestris*. Yazdani, R., Nilsson, J.-E., Plomion, C., and Mathur, G. Scandinavian Journal of Forest Research 18(1):29-38. 2003.

71. Open-pollinated family management in nurseries. Carlson, W. C. IN: National proceedings: Forest and

Conservation Nursery Associations -- 2002. Riley, L.E., Dumroese, R.K. and Landis, T.D., technical coordinators. USDA Forest Service, Rocky Mountain Research Station, Proceedings RMRS-P-28, p. 151-158. 2003.

72. © Phenology and diameter increment in seedlings of European beech (*Fagus sylvatica* L.) as affected by different soil water contents: variation between and within provenances. Nielsen, C. N. and Jorgensen, F. V. *Forest Ecology and Management* 174(1-3):233-249. 2003.

73. © Using single family in reforestation: gene diversity concerns. Kang, K. S., Lai, H. L., and Lindgren, D. *Silvae Genetica* 51(2-3):65-72. 2002.



74. © Genetic variation in nitrogen uptake and growth in mycorrhizal and nonmycorrhizal *Picea abies* (L.) Karst. seedlings. Mari, S., Jonsson, A., Finlay, R., Ericsson, T., Kahr, M., and Eriksson, G. *Forest Science* 49(2):258-267. 2003.

75. Mycorrhization of *Pinus halepensis* Mill. and *Pinus pinaster* Aiton seedlings in two commercial nurseries. Gonzalez-Ochoa, A. I., de las Heras, J., Torres, P., and Sanchez-Gomez, E. *Annals of Forest Science* 60(1):43-48. 2003.



76. Analysis of devices for planting seedlings. Balan, O. *Environment and Crop Production* 2002:117-127. 2002.

77. Are you seeing the big picture? Why you should take a systems approach to greenhouse structures and equipment. Zylstra, A. *Greenhouse Management and Production* 23(5):38-42. 2003.

78. Assimilation lighting for greenhouses. Bartok, J.

W., Jr. IN: National proceedings: Forest and Conservation Nursery Associations -- 2002. Riley, L.E., Dumroese, R.K. and Landis, T.D., technical coordinators. USDA Forest Service, Rocky Mountain Research Station, Proceedings RMRS-P-28, p. 74-75. 2003.

79. An attempt to improve uniformity of a Gaspardo precision seeder. Parish, R. L. and Bracy, R. P. *HortTechnology* 13(1):100-103. 2003.

80. Best vent location for maximum ventilation. Short, T. *Greenhouse Management and Production* 23(4):30-31, 33. 2003.

81. The dark ages. Landicho, S. *American Nurseryman* 197(10):26-28. 2003. Growers now have plenty of options when it comes to shading their plants, from black woven cloth to high-tech shade systems.

82. Greenhouse site assessment helps avoid future problems. Rigazio, A. *Greenhouse Management and Production* 22(9):67-68, 70. 2003. Determining a location's Exposure Category can make obtaining a building permit a lot simpler.

83. Know your construction costs. Bartok, J. W., Jr. *Greenhouse Management and Production* 23(2):56. 2003.

84. Limit exclusion screening's impact on ventilation. Parbst, K. *Greenhouse Management and Production* 23(4):34-36. 2003.

85. Made in the shade. Calkins, B. *Greenhouse Grower* 21(4):42, 44, 46, 63. 2003.

86. Make film removal easier. Bartok, J. W., Jr. *Greenhouse Management and Production* 22(9):87-88. 2003. The Tiger Baler has been remodeled to remove plastic film from hoop houses and greenhouses.

87. Nursery projects at the Missoula Technology and Development Center. Trent, A. and Vachowski, B. IN: National proceedings: Forest and Conservation Nursery Associations -- 2002. Riley, L.E., Dumroese, R.K. and Landis, T.D., technical coordinators. USDA Forest Service, Rocky Mountain Research Station, Proceedings RMRS-P-28, p. 47-51. 2003. Recent projects include a seedling temperature monitor, a shielded herbicide sprayer, hardwood cuttings preparation equipment, equipment to sterilize styroblocks, an improved bench root pruner, a nursery soil sterilizer, animal damage repellents, snow making equipment to protect overwintering seedlings, a whitebark pine seed scarifier,

and equipment to replace the copper coating on used styroblocks.

88. Prepare for your next sowing season now. Steiner, D. *Greenhouse Management and Production* 23(4):39-40, 42, 44. 2003. Accurate seed sowing is not an accident. Today's seeders will successfully do the job if they are properly serviced, maintained and operated in a proper environment.

89. Roll up the walls. Svenson, S. E. *Greenhouse Management and Production* 23(3):38-40, 42. 2003.

90. Theoretical considerations and some experimental results concerning improvements in seedling transplanting machines. Cracium, V., Bumacov, V., Balan, O., and Filipescu, I. *Environment and Crop Production* 2002:139-146. 2002.

91. Tree seedling transplanters. Windell, K. IN: National proceedings: Forest and Conservation Nursery Associations -- 2002. Riley, L.E., Dumroese, R.K. and Landis, T.D., technical coordinators. USDA Forest Service, Rocky Mountain Research Station, Proceedings RMRS-P-28, p. 108-116. 2003.

92. Understanding structural loads. Bartok, J. W., Jr. *Greenhouse Management and Production* 23(6):79-80. 2003.



93. © Contrasting modes of survival by jack and pitch pine at a common range limit. Greenwood, M. S., Livingston, W. H., Day, M. E., Kenaley, S. C., White, A. S., and Brissette, J. C. *Canadian Journal of Forest Research* 32(9):1662-1674. 2002.

94. © Effect of nursery location and outplanting date on field performance of *Pinus halepensis* and *Quercus ilex* seedlings. Pardos, M., Royo, A., Gil, L., and Pardos, J. A. *Forestry* 76(1):67-81. 2003.

95. Fall planting in northern California. Fredrickson, E. IN: National proceedings: Forest and Conservation Nursery Associations -- 2002. Riley, L.E., Dumroese, R.K. and Landis, T.D., technical coordinators. USDA Forest Service, Rocky Mountain Research Station, Proceedings RMRS-P-28, p. 159-161. 2003.

96. © Field performance of silver-birch planting-stock grown at different spacing and in containers of different volume. Aphalo, P. and Rikala, R. *New Forests* 25(2):93-108. 2003.

97. © Germination and early survival of *Eucalyptus blakelyi* in grasslands of the New England Tablelands, NSW, Australia. Li, J., Duggin, J. A., Grant, C. D., and Loneragan, W. A. *Forest Ecology and Management* 173(1-3):319-334. 2003.

98. © Growth and nutritional responses of bareroot Jeffrey pine on a Sierra Nevada surface mine to minisite applications of fertilizer and lime. Walker, R. F. *New Forests* 24(3):225-238. 2002.

99. © Growth response of longleaf pine (*Pinus palustris* Mill.) seedlings to fertilization and herbaceous weed control in an old field in southern USA. Ramsey, C. L., Jose, S., Brecke, B. J., and Merritt, S. *Forest Ecology and Management* 172(2-3):281-289. 2003.

100. Morphological differences of the root system of bareroot and container longleaf pine after outplanting. Pickens, B. and Howell, T. IN: National proceedings: Forest and Conservation Nursery Associations -- 2002. Riley, L.E., Dumroese, R.K. and Landis, T.D., technical coordinators. USDA Forest Service, Rocky Mountain Research Station, Proceedings RMRS-P-28, p. 17-20. 2003.

101. © Planting frozen conifer seedlings: warming trends and effects on seedling performance. Kooistra, C. M. and Bakker, J. D. *New Forests* 23(3):225-237. 2002.

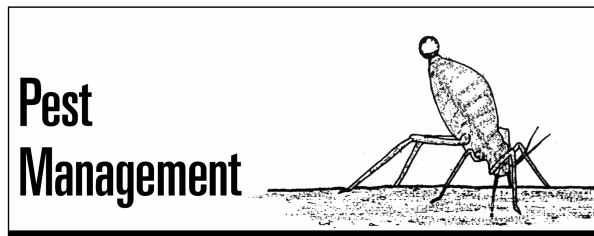
102. Proximity to a stand edge influences growth of advance and planted Pacific silver fir seedlings. Hawkins, B. J., Koppenaar, R. S., and Mitchell, A. K. *Northwest Science* 76(3):221-229. 2002.

103. © Reduction of frost heaving of Norway spruce and Scots pine seedlings by planting in mounds or in humus. Sahlen, K. and Goulet, F. *New Forests* 24(3):175-182. 2002.

104. © Short- and long-term effects of site preparation, fertilization and vegetation control on growth and stand development of planted loblolly pine. Nilsson, U. and Allen, H. L. *Forest Ecology and Management* 175(1-3):367-377. 2003.

105. Tree planting at Hakalau Forest National Wildlife Refuge. Jeffrey, J. and Horiuchi, B. *Native*

Plants Journal 4(1):30-31. 2003. Using an auger for making planting holes.



106. Choose the right fungicides for *Pythium* control.

Hausbeck, M. *Greenhouse Management and Production* 23(4):48, 50, 52. 2003.

107. © Compost-induced suppression of *Pythium* damping-off is mediated by fatty-acid-metabolizing seed-colonizing microbial communities. McKellar, M. E. and Nelson, E. B. *Applied and Environmental Microbiology* 69(1):452-460. 2003.

108. Control black vine weevil. Gilrein, D. *Greenhouse Management and Production* 23(5):66-68. 2003.

109. Control greenhouse humidity to prevent plant diseases. Tjosvold, S. *Greenhouse Management and Production* 23(2):36-38, 40-41. 2003. Preventing condensation in greenhouses can have a major impact on how well you control plant diseases.

110. E-pest management. Bell, M. *Greenhouse Management and Production* 23(2):42-45. 2003. Internet web sites related to greenhouse pests and their control.

111. Efficacy of Plantpro 45 as a seed and soil treatment for managing *Fusarium* wilt of basil. Adams, P. D., Kokalis-Burelle, N., and Basinger, W. H. *HortTechnology* 13(1):77-80. 2003.

112. Implement a SCOUTing program. Rosenthal, E. *Greenhouse Management and Production* 23(2):46-48. 2003.

113. Ornamentals beware: white grubs. Crocker, R. and Garcia-Bonilla, M. *American Nurseryman* 197(9):12. 2003.

114. The perennial challenge: *Botrytis* gray mold control. Nameth, S. T. *Greenhouse Management and Production* 23(2):54-55. 2003.

115. *Phytophthora ramorum* found at Oregon nursery. Sivesind, C. *The Digger* 47(6):52-55. 2003. Ag officials say the incident is isolated; tests reveal pathogen is the European strain.

116. © The practical realities of alternatives to methyl bromide: concluding remarks. Noling, J. W. *Phytopathology* 92(12):1373-1375. 2002.

117. Research helps growers understand fungus gnats. Cloyd, R. *Greenhouse Management and Production* 23(3):60, 62. 2003.

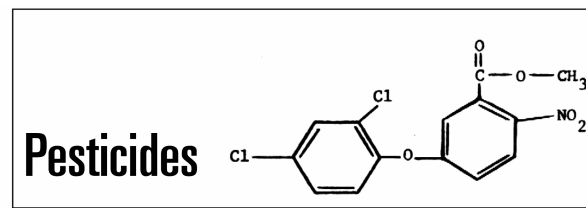
118. Search for options: few methyl bromide alternatives show promise. Rodda, K. *Greenhouse Management and Production* 23(5):53-54, 56. 2003.

119. Seed saver: iodine-based fungicide foils *Fusarium*. Yates, I. *Agricultural Research* 51(1):19. 2003.

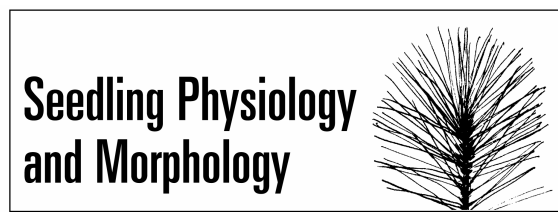
120. Species of *Fusarium* on *Pinus radiata* in New Zealand. Dick, M. A. and Dobbie, K. *New Zealand Plant Protection* 55:58-62. 2002.

121. Stop thrips in their tracks. Brownbridge, M. *Greenhouse Grower* 21(5):62, 65-66, 70, 72. 2003.

122. Stunting of southern pine seedlings by a needle nematode (*Longidorus* sp.). Cram, M. M., Fraedrich, S. W., and Fields, J. IN: National proceedings: Forest and Conservation Nursery Associations -- 2002. Riley, L.E., Dumroese, R.K. and Landis, T.D., technical coordinators. USDA Forest Service, Rocky Mountain Research Station, Proceedings RMRS-P-28, p. 26-30. 2003.



123. Common and chemical names of herbicides approved by the Weed Science Society of America. *Weed Science* 50(1):130-136. 2002.



124. Artificial regeneration of northern red oak and white oak on high-quality sites: effects of root morphology and relevant biological characteristics. Kormanik, P. P., Sung, S.-J. S., Zarnoch, S. J., and

Tibbs, G. T. IN: Beyond 2001: silvicultural odyssey to sustaining terrestrial and aquatic ecosystems 546: 83-91. 2002.

125. © A carbon balance assessment for containerized *Larix gmelinii* seedlings in the Russian Far East. Schlosser, W. E., Bassman, J. H., Wandschneider, P. R., and Everett, R. L. Forest Ecology and Management 173(1-3):335-351. 2003.

126. Causes of variation in cold hardiness among fast-growing willows (*Salix* spp.) with particular reference to their inherent rates of cold hardening. Lennartsson, M. and Ogren, E. Plant, Cell and Environment 25(10):1279-1288. 2002.

127. © Characterizing the frost sensitivity of black spruce photosynthesis during cold acclimation. Gaumont-Guay, D., Margolis, H. A., Bigras, F. J., and Raulier, F. Tree Physiology 23(5):301-311. 2003.

128. Development of root system in pedunculate oak (*Quercus robur* L.) from sowing and planting. Mauer, O., Palatova, E., and Ochman, J. Ekologia (Bratislava) 21 (Suppl. 1):152-170. 2002.

129. Effect of NaCl and high pH on seedling growth of 15 *Eucalyptus camaldulensis* Dehnh. provenances. Marcar, N. E., Zohar, Y., Guo, J., and Crawford, D. F. New Forests 23(3):193-206. 2002.

130. © Effects of contrasting light and soil moisture availability on the growth and biomass allocation of Douglas-fir and red alder. Chan, S. S., Radosevich, S. R., and Grotta, A. T. Canadian Journal of Forest Research 33(1):106-117. 2003.

131. © Effects of exogenous gibberellin and auxin on shoot elongation and vegetative bud development in seedlings of *Pinus sylvestris* and *Picea glauca*. Little, C. H. A. and MacDonald, J. E. Tree Physiology 23 (2):73-83. 2003.

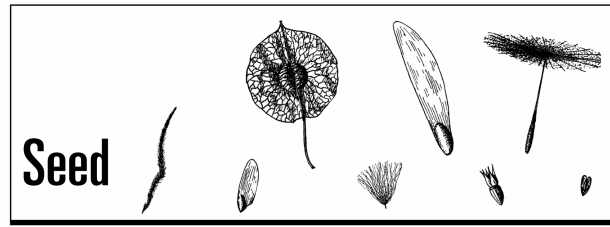
132. © Gas exchange and chlorophyll fluorescence responses of *Pinus radiata* D. Don seedlings during and after several storage regimes and their effects on post-planting survival. Mena-Petite, A., Robredo, A., Alcalde, S., Dunabeitia, M. K., Gonzalez-Moro, M. B., Lacuesta, M., and Munoz-Rueda, A. Trees 17(2):133-143. 2003.

133. Root physiology and phenology: the key to transplanting success. Ritchie, G. A. IN: National proceedings: Forest and Conservation Nursery Associations -- 2002. Riley, L.E., Dumroese, R.K. and

Landis, T.D., technical coordinators. USDA Forest Service, Rocky Mountain Research Station, Proceedings RMRS-P-28, p. 98-104. 2003.

134. © Sodium and chloride distribution in roots and transport in three poplar genotypes under increasing NaCl stress. Chen, S., Li, J., Fritz, E., Wang, S., and Huttermann, A. Forest Ecology and Management 168(1-3):217-230. 2002.

135. The target seedling concept -- a tool for better communication between nurseries and their customers. Landis, T. D. IN: National proceedings: Forest and Conservation Nursery Associations -- 2002. Riley, L.E., Dumroese, R.K. and Landis, T.D., technical coordinators. USDA Forest Service, Rocky Mountain Research Station, Proceedings RMRS-P-28, p. 12-16. 2003.



136. © Alleviatory effects of calcium on the toxicity of sodium, potassium and magnesium chlorides to seed germination in three non-halophytes. Tobe, K., Zhang, L., and Omasa, K. Seed Science Research 13 (1):47-54. 2003.

137. © Breaking physical dormancy in seeds -- focussing on the lens. Baskin, C. C. New Phytologist 158(2):227-238. 2003.

138. Determining seed transfer guidelines for southern pines. Schmidting, R. C. IN: National proceedings: Forest and Conservation Nursery Associations -- 2002. Riley, L.E., Dumroese, R.K. and Landis, T.D., technical coordinators. USDA Forest Service, Rocky Mountain Research Station, Proceedings RMRS-P-28, p. 8-11. 2003.

139. Emergence and growth of yellow-cedar (*Chamaecyparis nootkatensis*) seedlings following modified dormancy-breaking treatments. Schmitz, N., Xia, J.-H., and Kermode, A. R. Seed Science and Technology 30(2):249-262. 2002.

140. © Germination of pretreated Scots pine seeds after long-term storage. Hilli, A., Tillman-Sutela, E., and Kauppi, A. Canadian Journal of Forest Research 33 (1):47-53. 2003.

141. © Germination percentage and germination speed of European larch (*Larix decidua* Mill.) seed after prolonged storage. David, A. Northern Journal of Applied Forestry 19(4):168-170. 2002.

142. © Loblolly pine seed dormancy: constraints to germination. Cooke, J., Cooke, B., and Gifford, D. New Forests 23(3):239-256. 2002.

143. Modified moist chilling treatments that promote germination and post-germinative reserve mobilization of different seed lots of yellow-cedar (*Chamaecyparis nootkatensis* [D. Don] Spach). Xia, J.-H., Stewart, D., and Kermod, A. R. Seed Science and Technology 30(2):263-277. 2002.

144. Producing high-quality slash pine seeds. Barnett, J. and Varela, S. IN: National proceedings: Forest and Conservation Nursery Associations -- 2002. Riley, L.E., Dumroese, R.K. and Landis, T.D., technical coordinators. USDA Forest Service, Rocky Mountain Research Station, Proceedings RMRS-P-28, p. 52-56. 2003.

145. Separation of viable and non-viable filled Scots pine seeds by differentiating between drying rates using single seed near infrared transmittance spectroscopy. Lestander, T. A. and Oden, P. C. Seed Science and Technology 30:383-392. 2002.

146. © Water and lipid relations in beech (*Fagus sylvatica* L.) seeds and its effect on storage behaviour. Pukacka, S., Hoffmann, S. K., Goslar, J., Pukacki, P. M., and Wojkiewicz, E. Biochimica et Biophysica Acta 1621(1):48-56. 2003.

147. When breaking seed dormancy is a problem try a move-along experiment. Baskin, C. C. and Baskin, J. M. Native Plants Journal 4(1):17-21. 2003.

148. Whitebark pine seed scarifier. Gasvoda, D., Trend, A., Harding, C., and Burr, K. E. USDA Forest Service, Technology and Development Program, Timber Tech Tips 0224-2332-MTDC. 6 p. 2002.

**Soil Management
& Growing Media**

Peat Moss
Selected Canadian Sphagnum

149. © Afforestation of pastures with *Pinus radiata* influences soil carbon and nitrogen pools and

mineralisation and microbial properties. Ross, D. J., Tate, K. R., Scott, N. A., Wilde, R. H., Rodda, N. J., and Townsend, J. A. Australian Journal of Soil Research 40 (8):1303-1318. 2002.

150. © Change in soil carbon following afforestation. Paul, K. I., Polglase, P. J., Nyakuengama, J. G., and Khanna, P. K. Forest Ecology and Management 168(1-3):241-257. 2002.

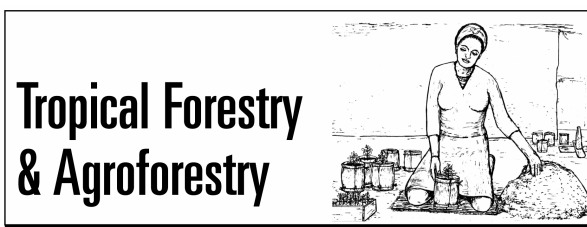
151. Managing soil denitrification. Mosier, A. R., Doran, J. W., and Freney, J. R. Journal of Soil and Water Conservation 57(6):505-513. 2002.

152. Nitrogen modeling for soil management. Shaffer, M. J. Journal of Soil and Water Conservation 57(6):417-425. 2002.

153. Principles for managing nitrogen leaching. Meisinger, J. J. and Delgado, J. A. Journal of Soil and Water Conservation 57(6):485-498. 2002.

154. Quantifying phosphorus losses from the agricultural system. Lemunyon, J. L. and Daniel, T. C. Journal of Soil and Water Conservation 57(6):399-401. 2002.

SO. Understanding pH management for container-grown crops. Argo, W. R. and Fisher, P. R. Meister Publication. 67 p. 2002. ORDER FROM: Meister Publications, 37733 Euclid Ave., Willoughby, OH 44094-5925. Phone: 440-942-2000. E-mail: gg_circ@meisterpubl.com. CHAPTERS: Overview; Factors that affect pH of a growing medium; Monitoring pH and nutrition; Plant health problems at low and high medium pH; Best management practices for pH management; Correcting low pH problems; Correcting high pH problems; Examples of growers who do it right.



155. © Bamboo as bioresource in Ethiopia: management strategy to improve seedling performance (*Oxytenanthera abyssinica*). Embaye, K., Christersson, L., Ledin, S., and Weih, M. Bioresource Technology 88(1):33-39. 2003.

156. Control of seed quality in reforestation and afforestation. Wang, B. S. P. Tropical forestry

symposium: the art and practice of conservation planting, p. 14-26. C.-T. Chien and R. Rose, eds. Taiwan Forestry Research Institute. 2002.

157. Effect of various pre-treatments on the seedling growth performance of *Tamarindus indica* L. Idu, M. and Omonhinmin, C. A. *Plant Biosystems* 135(2):165-168. 2001.

158. Effects of salinity and temperature on the germination and early seedling growth of *Atriplex cordobensis* Gandoger et Stuckert (Chenopodiaceae). Aiazzi, M. T., Carpane, P. D., De Rienzo, J. A., and Arguello, J. A. *Seed Science and Technology* 30(2):329-338. 2002.

159. © Effects of substrates composed of biosolids on the production of *Eucalyptus viminalis*, *Schinus terebinthifolius* and *Mimosa scabrella* seedlings and on the nutritional status of *Schinus terebinthifolius* seedlings. Bonnet, B. R. P., Wisniewski, C., Reissmann, C. B., Nogueira, A. C., Andreoli, C. V., and Barbieri, S. J. *Water Science and Technology* 46(10):239-246. 2002.

160. Enrichment planting of big-leaf mahogany and Spanish cedar in Quintana Roo, Mexico. Negreros-Castillo, P. and Mize, C. W. IN: *Big-leaf mahogany: genetics, ecology and management*, p. 278-287. Springer-Verlag. 2003.

161. © Factors limiting the intertidal distribution of the mangrove species *Xylocarpus granatum*. Allen, J. A., Krauss, K. W., and Hauff, R. D. *Oecologia* 135 (1):110-121. 2003.

162. Germination of *Atriplex cordobensis* (Gandoger et Stuckert): interaction between water stress and temperature. Aiazzi, M. T., Carpane, P. D., Di Rienzo, J. A., and Arguello, J. A. *Phyton: International Journal of Experimental Botany* 2001:7-14. 2001.

163. The implications of fire management and reforestation for economic development in east Nusa Tenggara. Djoeroemana, S., Semangun, H., Saragih, B., and Sulthoni, A. IN: *Fire and sustainable agricultural and forestry development in eastern Indonesia and northern Australia*, p. 52-55. 2000.

164. © Improved peach rootstocks and nursery management practices for subtropical climates. Perez, S. *Scientia Horticulturae* 98(2):149-156. 2003.

165. Mangrove nurseries: construction, propagation and planting. Clarke, A. and Johns, L. Queensland Department of Primary Industries, Fish Habitat

Guideline FHG 004. 26 p. 2002.

166. © Nursery production practices affect survival and growth of tropical hardwoods in Quintana Roo, Mexico. Mexal, J. G., Cuevas Rangel, R. A., Negreros-Castillo, P., and Paraguirre Lezama, C. *Forest Ecology and Management* 168(1-3):125-133. 2002.

167. Physical and physiological characteristics of *Dalbergia cochinchinensis* seeds in Thailand. Bhodthipuks, J. and Wang, B. S. P. *Tropical forestry symposium: the art and practice of conservation planting*, p. 243-251. C.-T. Chien and R. Rose, eds. Taiwan Forestry Research Institute. 2002.

168. Propagation of native forest tree species for forest restoration in northern Thailand. Vongkamjan, S., Elliott, S., Anusarnsunthorn, V., and Maxwell, J. F. *Tropical forestry symposium: the art and practice of conservation planting*, p. 175-183. C.-T. Chien and R. Rose, eds. Taiwan Forestry Research Institute. 2002.

SO. Tree seed management: seed sources, seed collection and seed handling. A field manual for field workers and farmers. Mulawarman, Roshetko, J. M., Sasongko, S. M., and Iriantono, D. Winrock International and ICRAF, TFRI Extension Series No. 152. 54 p. 2003. ORDER FROM: Winrock International, 38 Winrock Drive, Morrilton, AR 72110. (501) 727-5435. forestry@winrock.org. CHAPTERS: Why is this field manual needed? Where should seed be collected? How should seed sources be established and managed? How should tree seed be collected? How should seed be processed? How to accelerate seed germination? How to measure seed quality? How should seed be documented?

SO. Tropical tree seed manual. Vozzo, J. A. ed. USDA Forest Service, Agriculture Handbook 721. 899 p. 2002. ORDER FROM: Government Bookstore, Presents data on 197 important tropical tree species.



169. © Positional influence on rooting of shoots forced from the main bole of swamp white oak and northern red oak. Fishel, D. W., Zaczek, J. J., and Preece, J. E. *Canadian Journal of Forest Research* 33 (4):705-711. 2003.

Water Management



170. Automating your irrigation systems is a great investment. Steglin, F. and Thomas, P. A. *Greenhouse Management and Production* 23(3):43-46. 2003.

171. Dealing with runoff rules. Newman, J. *Greenhouse Management and Production* 23(2):53. 2003.

172. Environmental impacts of nurseries. Juntunen, M.-L. IN: National proceedings: Forest and Conservation Nursery Associations -- 2002. Riley, L.E., Dumroese, R.K. and Landis, T.D., technical coordinators. USDA Forest Service, Rocky Mountain Research Station, Proceedings RMRS-P-28, p. 64-73. 2003.

173. Getting an estimate. Bauerle, B. *American Nurseryman* 197(9):26-28. 2003. A researcher shares a new way to estimate water use in nursery crop production so professionals can irrigate more efficiently.

174. How ET is being used to help make landscapes more water efficient and reduce urban runoff. Ash, T. *Land and Water* 47(3):27-29. 2003.

175. © Leaching of nitrogen and phosphorus during production of forest seedlings in containers. Juntunen, M.-L., Hammar, T., and Rikala, R. *Journal of Environmental Quality* 31(6):1868-1874. 2002.

176. Survey of container nursery irrigation practices in Georgia. Garber, M. P., Ruter, J. M., Midcap, J. T., and Bondari, K. *HortTechnology* 12(4):727-731. 2002.

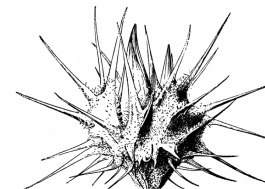
177. © Treatment of atrazine in nursery irrigation runoff by a constructed wetland. Runes, H. B., Jenkins, J. J., Moore, J. A., Bottomley, P. J., and Wilson, B. D. *Water Research* 37(3):539-550. 2003.

178. Water management is key in reducing nutrient runoff from container nurseries. Bilderback, T. E. *HortTechnology* 12(4):541-544. 2002.

SO. Crop evapotranspiration: guidelines for computing crop water requirements. Allen, R. G., Pereira, L. S., Raes, D., and Smith, M. Food and Agriculture Organization of the United Nations, FAO

Irrigation and Drainage Paper 56. 300 p. 1998. ORDER FROM: your favorite book seller. Price \$35.00. CONTENTS: Introduction to evapotranspiration; FAO Penman-Monteith equation; Meteorological data; Determination of ETo; Introduction to crop evapotranspiration (ETc); ETc - single crop coefficient; ETc - dual crop coefficient; ETc under soil water stress conditions; ETc for natural, non-typical and non-pristine conditions; ETc under various management practices; ETc during non-growing periods.

Weed Control



179. Aspects of steaming the soil to reduce weed seedling emergence. Melander, B., Heisel, T., and Jorgensen, M. H. 12th European Weed Research Society Symposium, 2002, Wageningen, p. 236-237. 2002.

180. © Chloropicrin effect on weed seed viability. Haar, M. J., Fennimore, S. A., Ajwa, H. A., and Winterbottom, C. Q. *Crop Protection* 22(1):109-115. 2003.

181. © Delivery patterns with hand-carried, hand-cranked nursery spreaders. Parish, R. L. *Applied Engineering in Agriculture* 19(1):39-44. 2003.

182. Density and development of bracken fern (*Pteridium aquilinum*) in forest plantations as affected by manual and chemical application. McDonald, P. M., Abbott, C. S., and Fiddler, G. O. *Native Plants Journal* 4(1):52-60. 2003.

183. © The effect of pre-emergent herbicides on germination and early growth of broadleaved species used for direct seedings. Willoughby, I., Clay, D., and Dixon, F. *Forestry* 76(1):83-94. 2003.

184. Efficacy of glyphosate, glufosinate, and imazethapyr on selected weed species. Hoss, N. E., Al-Khatib, K., Peterson, D. E., and Loughin, T. M. *Weed Science* 51(1):110-117. 2003.

185. Experiences with weed discs and other nonchemical alternatives for container weed control. Chong, C. *HortTechnology* 13(1):23-27. 2003. Compares Weed Guard, Tex-R Geodisc, Biodisc, Enviro LID, Corrudisc, and Mori Weed Bag.

186. Novel methods of weed control in containers.

Mathers, H. M. HortTechnology 13(1):28-34. 2003.
Compares herbicide-treated bark, Geodiscs, Penn
Mulch, Wulpack, Mori Weed Bags, and Enviro LIDs.

187. Nutsedge (*Cyperus* spp.) eradication: impossible dream? Webster, T. M. IN: National proceedings: Forest and Conservation Nursery Associations -- 2002. Riley, L.E., Dumroese, R.K. and Landis, T.D., technical coordinators. USDA Forest Service, Rocky Mountain Research Station, Proceedings RMRS-P-28, p. 21-25. 2003.

188. © A risk-qualified approach to calculate locally varying herbicide application rates. Faechner, T., Norrena, K., Thomas, A. G., and Deutsch, C. V. Weed Research 42(6):476-485. 2002.

189. Weed species and their chemical control in hardwood seedling producer forest nurseries. Gokdemir, S. 12th European Weed Research Society Symposium 2002, Wageningen: 180-181. 2002.

Literature Order Form

Summer 2003

Please fill out a separate order form for each person ordering literature. Write in the number or letter of the articles in which you are interested in the spaces at the bottom of this page. Note that we will only provide free copies of the first 25! For items that require a copyright fee, you will receive the title page with abstract and ordering instructions if you want the entire article. Fax or mail this form to:

Tom D. Landis
J.H. Stone Nursery
2606 Old Stage Rd.
Central Point, OR 97502
TEL: 541.858.6166
FAX: 541.858.6110
E-mail: tdlandis@fs.fed.us

Name: _____ **Position:** _____

Department: _____ **Nursery/Company:** _____

Mailing address: _____

Street Address: _____

City: _____ **State/Province:** _____

Country: _____ **Zip/Postal Code:** _____

Telephone: _____ **FAX:** _____

E-mail: _____ **Website:** _____

In order to keep costs reasonable we will provide free copies of the first 25 articles. Fill in the number or letter each article from the New Nursery Literature section in the following spaces:
