

New Nursery Literature

Copies of the following journal articles or publications are free and can be ordered using the Literature Order Form on the last page. Just write in the appropriate number or letter on the form and return it to us. Note that there are three restrictions:

- 1. Limit in the Number of Free Articles:** In an effort to reduce mailing costs, we are limiting the number of free articles that can be ordered through the FNN literature service. All subscribers will be restricted to 25 free articles per issue. If you still want additional articles, then you will have to order them on a fee basis from Donna Loucks, the librarian who maintains the FNN database. Just fill in the number of the fee articles on the bottom half of the order form, return it to us, and we will forward it to Donna.
- 2. Copyrighted Material.** Items with © are copyrighted and require a fee for each copy, so only the title page and abstract will be provided through this service. If you want the entire article, then you can order a copy from a library service or from Donna.
- 3. Special Orders (SO).** Special orders are books or other publications that, because of their size or cost, require special handling. For some, the Forest Service has procured copies for free distribution, but others will have to be purchased. Prices and ordering instructions are given below or following each listing in the New Nursery Literature section.

Contenedores y Medios de Crecimiento: Manual de Viveros para la Producción de Especies Forestales en Contenedor, Volumen Dos.

Fertilización y Riego: Manual de Viveros para la Producción de Especies Forestales en Contenedor, Volumen Cuarto.

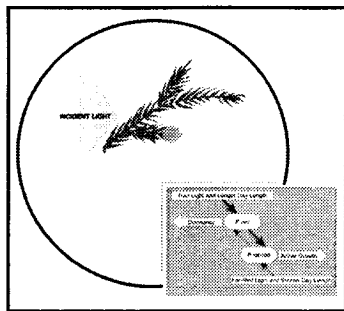


These two softbound publications are the Spanish translations of Volume Two: Containers and Growing Media, and Volume Four: Seedling Nutrition and Irrigation of the Container Tree Nursery Manual series. The translations were done by Dr. Dante Rodriguez of the University of Chapingo in Mexico and the layout and printing were processed and financed by Ricardo Sanchez of the National Program of Reforestation of the Secretary of Environment, Natural Resources, and Fisheries of the Government of Mexico.

COST: Call for Price

ORDER FROM:

Jose Ricardo Sanchez Velazquez
SEMARNAP/Dir. Gral. PRONARE, SIRE
Periferico Sur 5991 3er. Piso
Col. Arenal Tepepan
Mexico D.F. 16020
MEXICO
TEL: (52) 56.41.28.45 or 56.41.17.76
FAX: (52)55.55.74.05
E-MAIL: dgrapel@netmex.com



This hardbound book focuses on the physiological processes of northern spruce species at the whole plant level in response to the surrounding environment. Chapter topics include water relations, gas exchange, mineral nutrition, freezing tolerance, dormancy, and morphological development. It provides a good review of basic seedling physiology and contains many good color and black-and-white illustrations.

COST: \$49.95.

ORDER FROM:

Monograph Orders, NRC Research Press
M-55, National Research Council Canada
Ottawa, Ontario K 1 A 0R6

Canada

TEL: 613.990.2254

FAX: 613.952.7656

WEBSITE: www.nrc.ca/cisti/journals/mgraphs.html

Bareroot Production



1. © Effects of root wrenching on leaf mineral content of *Prunus avium* and *Castanea sativa* seedlings. Hipps, N. A.; Samuelson, T. J.; Farman, L. G. Canadian Journal of Forest Research 30:958-963. 2000.

Container Production



2. Growing longleaf pine seedlings in containers. Barnett, J. P.; McGilvray, J. M. Native Plants Journal 1(1):54-58. 2000.
3. Stem development in young plants. Whitcomb, C. Nursery Management and Production 16(5):67-68, 70-72. 2000. Spacing, removal of lower limbs, protection from wind, nitrogen, root branching play important roles.

Diverse Species



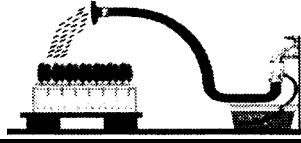
4. Chilling requirements for seed germination of 10 Utah species of perennial wild buckwheat (*Eriogonum* Michx. [Polygonaceae]). Meyer, S. E Paulsen, A. Native Plants Journal 1(1):18-24. 2000.
5. Debunking native myths. Anella, L. B. American Nurseryman 192(4):39-40, 42, 44. 2000. Native plants have seen a resurgence in popularity, but is this new-found acceptance for the right reasons?
6. © Dormancy-breaking and germination requirements for seeds of *Diervilla lonicera* (Caprifoliaceae), a species with underdeveloped linear embryos. Hidayati, S. N.; Baskin, J. M.; Baskin, C. C. Canadian Journal of Botany 78:11991205. 2000.
7. Ecology and conservation biology of the endangered plant species *Solidago shortii* (Asteraceae). Baskin, J. M.; Walck, J. L.; Baskin, C. C.; Buchele, D. E. Native Plants Journal 1(1):35-41. 2000.
8. Effects of light and temperature on the germination and seedling vigour of *Atriplex cordobensis* (Gandoger et Stueckert) seeds harvested in autumn and winter. Aiuzzi, M. T.; Di Rienzo, J. A.; Arguello, J. A. Seed Science and Technology 28:477-484. 2000.

9. **Harvesting native seeds with a gas hedge trimmer.** van der Grinten, M.; Ayers, B. M. *Native Plants Journal* 1(2):120. 2000.
10. **IR-4 program: registering pesticides for specialty plants.** Frank, J. R. *Native Plants Journal* 1(2):106. 2000.
- 11 **The longleaf pine ecosystem of the south.** Outcalt, K. W. *Native Plants Journal* 1(1):42-44, 47-53. 2000.
12. **Mason State nursery: a model for prairie plant production.** Dumroese, R. K.; Pequignot, S.; Horvath, D. *Native Plants Journal* 1(1):10-12, 14-17. 2000.
13. **Mayapple's cancer-fighting precursor.** Canel, C. *Agricultural Research* 48(7):9. 2000.
14. **Meehania cordata: a great ground cover for the landscape.** Glick, B. *Native Plants Journal* 1 (1):30-31. 2000.
15. **Mystery solved on Spring Creek: *Trautvetteria caroliniensis*.** Glick, B. *Native Plants Journal* 1 (2):82-83. 2000.
16. **Native Americans and their plants: linking the past with the future.** Luna, T. *Native Plants Journal* 1(2):95-101 . 2000.
17. **Native fern propagation in Glacier National Park's native plant nursery.** Luna, T. *Native Plants Journal* 1(1):5-9. 2000.
18. **Native warm-season grass and forb establishment using imazapic and 2,4-D.** Washburn, B. E.; Barnes, T. G. *Native Plants Journal* 1(1):61-69. 2000.
19. **Planting cactus pear on raised beds versus planting on flat land.** Labib, S. *Journal of the Professional Association for Cactus Development* 3:37-39. 1998.
20. **Propagation of redhead grass (*Potamogeton perfoliatus* L.) transplants for restoration projects.** Kujawski, J.; Thompson, R. *Native Plants Journal* 1(2):124-127. 2000.
21. **Propagation protocol for *Hierochloe odorata*, sweetgrass.** Window, S. *Native Plants Journal* 1 (2): 102-103. 2000.
22. **Propagation protocol for wild rice (*Zizania palustris* L. [Poaceae]).** Luna, T. *Native Plants Journal* 1(2): 104-105. 2000.
23. **Propagation protocols on the Native Plant Network.** Landis, T. D.; Dumroese, R. K. *Native Plants Journal* 1(2):112-114. 2000.
24. **Protocol for growing Kankakee mallow (*Iliamna remota*).** Flood, R.; Horvath, D.; Blessman, G. *Native Plants Journal* 1(1):13-14. 2000.
25. **Revegetating slag refuse areas with native warm season grasses.** Bush, T.; Koch, P. *Native Plants Journal* 1 (2):77-81. 2000.
26. **Saguaro cactus: cultural significance and propagation techniques in the Sonoran Desert.** Paten M. J.; Siquieros, B. *Native Plants Journal* 1 (2):90-94. 2000.
27. **Seed and seedling production of blue wild-rye (*Elymus glaucus*).** Archibald, C.; Feigner, S.; Visser, J. *Native Plants Journal* 1(1):32-34. 2000.
28. © **Seed coat dormancy in two species of *Grevillea* (Proteaceae).** Morris, E. C.; Tieu, A.; Dixon, K. *Annals of Botany* 86:771-775. 2000.
29. © **Seed germination response to cold stratification period and thermal regime in *Phacelia secunda* (Hydrophyllaceae).** Cavieres, L. A.; Arroyo, M. T. K. *Plant Ecology* 149:1-8. 2000.
30. **Sowing the seed: initiating a native plant restoration program (Michigan).** Schultz, J. L. *Ecological Restoration* 17(4):239. 1999.
31. **Users guide to description, propagation and establishment of native shrubs and trees for riparian areas in the intermountain west.** Ogle, D. G.; Hoag, J. C.; Scianna, J. D. USDA, Natural Resources Conservation Service, TN Plant Materials Technical Note 32. 22 p. 2000.
32. **Vegetated erosion control mats for site stabilization.** van der Grinten, M.; Gregory, L. L. *Native Plants Journal* 1(2):121-122. 2000.
33. **Where there's smoke ... there's germination?** Landis, T. D. *Native Plants Journal* 1(1):25-29. 2000.

34. **Wiregrass propagation at the Andrews Nursery in Florida.** Pittman, T.; Karrfalt, R. P. *Native Plants Journal* 1(1):45-47. 2000.

35. **Writing woody plant specifications for restoration and mitigation projects.** Buffs, S. *Native Plants Journal* 1(2):116-119. 2000.

Fertilization and Nutrition



36. **Combined effect of slow release fertilizer and fertigation on nutrient use of *Cupressus glabra* grown in nursery conditions.** Eymar, E.; Cadahia, C.; Sanchez, A.; Lopez-Vela, A. *Agrochimica* 44(1-2):39-48. 2000.

37. **Controlling fertilizers in production.** Ferry, S.; Zablocki, J. *Greenhouse Grower* 18(8):50, 54-56. 2000. Water-soluble and controlled-release fertilizers combined can offer the most efficient control.

38. **Detection of mineral deficiencies in ornamentals.** Mathers, H. *Nursery Management and Production* 16(5):48-50, 52, 55-56. 2000. Schedule frequent tissue, water & soil tests.

39. © **Differences in nitrate and ammonium uptake between Scots pine and European larch.** Malagoli, M.; Dal Canal, A.; Quaggiotti, S.; Pegoraro, P.; Bottacin, A. *Plant and Soil* 221:1-3. 2000.

40. © **Effect of manganese on endomycorrhizal sugar maple seedlings.** Schier, G. A.; McQuattie, C. J. *Journal of Plant Nutrition* 23(10):1533-1545. 2000.

41. **How to correct nutritional problems.** Whipker, B. E.; Pitchay, D. S.; Gibson, J. L.; Nelson, P. V.; Campbell, C. R. *Greenhouse Management and Production* 20(6):38-40, 42-44, 46. 2000.

42. **Making sense of soluble salts.** Stamps, R. H. *Greenhouse Grower* 18(8):44, 49. 2000. Here are a few tips for interpreting the electrical conductivity (EC) levels of your crops.

43. **Nitrogen and carbon mineralization dynamics of manures and composts.** Hartz, T. K.; Mitchell, J. P.; Giannini, C. *HortScience* 35(2):209-212. 2000.

44. © **Physiological responses of black spruce layers and planted seedlings to nutrient addition.** Paquin, R.; Margolis, H. A.; Doucet, R.; Coyea, M. R. *Tree Physiology* 20:229-237. 2000.

45. **Saline solution.** Cabrera, R. I. *American Nurseryman* 191(11):32-34, 336-38. 2000. Using the proper methods, growers can extract leachate to monitor and manage soluble salts in field and container operations.

46. © **Soluble proteins and dehydrins in nitrogen-fertilized Scots pine seedlings during deacclimation and the onset of growth.** Kontunen-Soppela, S.; Taulavuori, K.; Taulavuori, E.; Lahdesmaki, P.; Laine, K. *Physiologia Plantarum* 109:404-409. 2000.

47. © **Study of conifer nitrogen nutrition using hydroponic cultures: application to fertigation systems.** Sanchez, A.; Cadahia, C.; Eymar, E.; Masaguer, A. *Journal of Plant Nutrition* 23 (7):1007-1024. 2000.

48. **Supplements can reduce the fertilizer needs of loblolly pine.** Davenport, S. *American Nurseryman* 192(8):56-57. 2000.

49. © **The use of different soil nitrogen sources by young Norway spruce plants.** George, E.; Stober, C.; Seith, B. *Trees: Structure and Function* 13:199-205. 1999.

General and Miscellaneous



50. **Phytoremediation: using plants to clean up soils.** Becker, H. *Agricultural Research* 48(6):4-9. 2000.

51. **The role of planted forests in a "green certified" century.** Powers, R. F. IN: *Forest Vegetation Management Conference, proceedings, 21st annual*, p.1-17. 2000.

Genetics and Tree Improvement



Genome
Aa
Bb
cc
Dd

52. © Differences in growth and branch production by young plants of two provenances of *Quercus robur* L. Harmer, R. Forestry 73(3):273-281. 2000.

53. © Genetics of cold hardiness in a cloned full-sib family of coastal Douglas-fir. Anekonda, T. S.; Adams, W. T.; Aitken, S. N.; Neale, D. B.; Jermstad, K. D.; Wheeler, N. C. Canadian Journal of Forest Research 30:837-840. 2000.

54. New plant development: Part 3 - cold-resistance breeding. Mathers, H. The Digger 44(7):59-60. 2000.



Mycorrhizae & Beneficial Microorganisms

55. © Colonization and growth promotion of outplanted spruce seedlings pre-inoculated with plant growth-promoting rhizobacteria in the greenhouse. Shishido, M.; Chanway, C. P. Canadian Journal of Forest Research 30:845-854. 2000.

56. Ectomycorrhization of *Acacia holosericea* A. Cunn. ex G. Don by *Pisolithus* spp. in Senegal: effect on plant growth and on the root-knot nematode *Meloidogyne javanica*. Duponnois, R.; Founoune, H.; Ba, A.; Plenchette, C.; El Jaafari, S.; Neyra, M.; Ducouso, M. Annals of Forest Science 57:345-350. 2000.

57. © Ectomycorrhization of six *Acacia auriculiformis* provenances from Australia, Papua New Guinea and Senegal in glasshouse conditions: effect on the plant growth and on the multiplication of plant parasitic nematodes. Duponnois, R.; Founoune, H.; Lesueur, D.; Thioulouse, J.; Neyra, M. Australian Journal of Experimental Agriculture 40:443-450. 2000.

58. © Effects of ectomycorrhizas and vesicular-arbuscular mycorrhizas, alone or in competition, on root colonization

and growth of *Eucalyptus globulus* and *E. uropltylla*. Chen, Y. L.; Brundrett, M. C.; Dell, B. New Phytologist 146:545-556. 2000.

59. © Effects of inoculation with *Frankia* on the growth and nutrition of alder species and interplanted Japanese larch on restored mineral workings. Moffat, A. J. Forestry 73(3):215-223. 2000.

60. © Endophytic colonization and field responses of hybrid spruce seedlings after inoculation with plant growth-promoting rhizobacteria. Chanway, C. P.; Shishido, M.; Nairn, J.; Jungwirth, S.; Markham, J.; Xiao, G.; Holl, F. B. Forest Ecology and Management 133:81-88. 2000.

61. Influence of the ectomycorrhizas formed by *Tuber melanosporum* Vitt. on hydraulic conductance and water relations of *Quercus ilex* L. seedlings. Nardini, A.; Salleo, S.; Tyree, M. T.; Vertovec, M. Annals of Forest Science 57:305312. 2000.

62. © Kinetics of phosphate absorption by mycorrhizal and non-mycorrhizal Scots pine seedlings. Van Tichelen, K. K.; Colpaert, J. V. Physiologia Plantarum 110:96-103. 2000.

Nursery Structures & Equipment



63. Diffusion confusion. Svenson, S. E. Nursery Management and Production 16(8):39-42, 44. 2000. Comparing shade cloth and poly film for shading nursery crops.

64. Don't skip on materials for building greenhouse floors. Bartok, J. W., Jr. Greenhouse Management and Production 20(6):80, 82. 2000.

65. Equipment makes re-covering greenhouse glazing easy. Bartok, J. W., Jr. Greenhouse Management and Production 20(9):85-86. 2000.

66. Put a lid on heating costs with thermal screens. Roberts, W. J. Greenhouse Management and Production 20(8):72, 74, 76, 81. 2000.

67. **Reduce your heating costs.** Bartok, J. W., Jr. *Greenhouse Management and Production* 20(8):9193. 2000.

68. **Using flat-roof retractables for spring frost protection.** Svenson, S.; Bell, N.; Henderson, A. *The Digger*, 44(9):25, 27, 29-31. 2000. Study shows considerable difference in crop protection among open exposure beds, poly-film-covered hoop houses and retractable-roof greenhouses.

Outplanting Performance



69. **Blue oak mini-plug transplants:** how they compare to standard bareroot and container stock. McCreary, D. D.; Lippitt, L. *Native Plants Journal* 1(2):84-89. 2000.

70. © **Delayed growth response of mountain birch seedlings to a decrease in fertilization and temperature.** Weih, M. *Functional Ecology* 14:566-572. 2000.

71. © **Early outplanting performance of nutrient-loaded containerized black spruce seedlings inoculated with *Laccaria bicolor*: a bioassay study.** Quoreshi, A. M.; Timmer, V. R. *Canadian Journal of Forest Research* 30:744-752. 2000.

72. © **Effect of uninucleate *Rhizoctonia* on the survival of outplanted Scots pine and Norway spruce seedlings.** Lilja, A.; Rikala, R. *Forest Pathology* 30:109-115. 2000.

73. © **Effect of ventilation on growth of *Prunus avium* seedlings grown in treeshelters.** Bergez, J. E.; Dupraz, C. *Agricultural and Forest Meteorology* 104:199-214. 2000.

74. © **Experimental studies of potential improvements in the forest regeneration capabilities of "seed-containing aerial darts".** Wood, A. D. *Forestry Chronicle* 76(3):406-418. 2000.

75. **Fall versus spring planting in the Sierra Cascade region.** Livingston, T. J. IN: *Forest Vegetation Management Conference, proceedings, 21st annual*, p.60-62. 2000.

76. © **Growth of mountain birch seedlings in early-successional patches: a year-round perspective.** Weih, M. *Plant Biology* 2:428-436. 2000.

77. **Homemade dibble facilitates planting willow and cottonwood cuttings.** McCreary, D. D.; Tecklin, J. *Native Plants Journal* 1(1):59-60. 2000.

78. **Interaction of initial seedling size, fertilization, and vegetation control.** Ketchum, J. S.; Rose, R. IN: *Forest Vegetation Management Conference, proceedings, 21st annual*, p.63-69. 2000.

79. **Management strategies and objectives for successful reforestation planning.** Newton, M. IN: *Forest Vegetation Management Conference, proceedings, 21st annual*, p.18-21. 2000.

80. © **Organic amendment and mycorrhizal inoculation as a practice in afforestation of soils with *Pinus halepensis* Miller: effect on their microbial activity.** Garcia, C.; Hernandez, T.; Roldan, A.; Albaladejo, J.; Castillo, V. *Soil Biology and Biochemistry* 32:1173-1181. 2000.

81. **Planting morphologically improved pine seedlings to increase survival and growth.** South, D. B. *Alabama Agricultural Experiment Station, Forestry and Wildlife Research Series* 1. 12 p. 2000.

82. **Practical magic.** Marcus, L. *American Nurseryman* 192(7):46-49. 2000. Biostimulants claim to allow growers to safely transplant trees at any time of the year. Bio-Plex is an organic concentrate which helps the plant retain moisture.

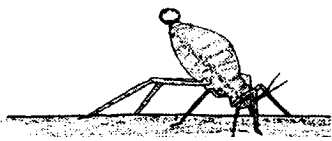
83. © ***Quercus rugosa* seedlings dynamics in relation to its re-introduction in a disturbed Mexican landscape.** Bonfil, C.; Soberon, J. *Applied Vegetation Science* 2:189-200. 1999.

84. **Reforesting dry sites with container stock.** Haywood-Farmer, S.; Kiiskila, S.; van Eerden, E. IN: *Forest Vegetation Management Conference, proceedings, 21st annual*, p.23-26. 2000.

85. © **Tree growth on rehabilitated skid roads in southeast British Columbia.** Dykstra, P. R.; Curran, M. P. *Forest Ecology and Management* 133:145-156. 2000.

SO. Ecophysiology of northern spruce species: the performance of planted seedlings. Grossnickle, S. C. NRC Research Press. 409 p. 2000. Focuses on the physiological processes of northern spruce species at the whole plant level in response to the surrounding environment. Discusses: water relations, gas exchange, mineral nutrition, freezing tolerance, dormancy, and morphological development. ORDER FROM: Monograph Orders, NRC Research Press, M-55, National Research Council Canada, Ottawa, Ontario K1A 0R6 Canada. Phone: (613) 990-2254. Fax: (613) 952-7656. www.nrc.ca/cisti/journals/mgraphs.html. Price: \$49.95.

Pest Management



86. © **Combined soil treatments and sequence of application in improving the control of soilborne pathogens.** Eshel, D.; Gamliel, A.; Grinstein, A.; Di Primo, P.; Katan, J. *Phytopathology* 90:751-757. 2000.

87. **Common herbaceous perennial diseases.** Williams-Woodward, J. L. *Greenhouse Management and Production* 20(10):46-50, 52. 2000. Describes pathogens, susceptible plants, symptoms, cultural control and chemical control for fungal leaf spots and blights, powdery mildew, downy mildew, bacterial leaf spots, root rot, *Rhizoctonia* root rot and web blight, foliar nematode, virus, and southern blight.

88. **Contamination of pine seeds by *Fusarium circinatum*.** Dwinell, L. D.; Fraedrich, S. W. Finnish Forest Research Institute, Research Paper 781, p. 75-82. Proceedings of the 4th meeting of IUFRO Working Party 7.03.04 - Diseases and insects in forest nurseries. 2000.

89. **Diseases and pests in forest nurseries in Croatia during 1998.** Glavas, M. Finnish Forest Research Institute, Research Paper 781, p. 247. Proceedings of the 4th meeting of IUFRO Working Party 7.03.04 - Diseases and insects in forest nurseries. 2000.

90. **Doggone smart deer control.** Fogle, J. M. *American Nurseryman* 192(6):54-56. 2000. Employing an invisible-fence

technology system, growers are calling out the dogs to keep deer at bay.

91. **Ectomycorrhizal fungi as biological control agents against *Rhizoctonia* root infection of container-grown Scots pine seedlings.** Niemi, K.; Lilja, A.; Kasurinen, A.; Heinonen-Tanski, H. Finnish Forest Research Institute, Research Paper 781, p. 151-162. Proceedings of the 4th meeting of IUFRO Working Party 7.03.04 - Diseases and insects in forest nurseries. 2000.

92. **The effect of nursery applied fungicides on the growth and mycorrhiza abundance of Scots pine seedlings.** Laatikainen, T.; Juntunen, M. L.; Heinonen-Tanski, H. Finnish Forest Research Institute, Research Paper 781, p. 177-187. Proceedings of the 4th meeting of IUFRO Working Party 7.03.04 - Diseases and insects in forest nurseries. 2000.

93. © **Effects on growth and comparison of root tissue colonization patterns of *Eucalyptus viminalis* by pathogenic and nonpathogenic strains of *Fusarium oxysporum*.** Salerno, M. L.; Gianinazzi, S.; Gianinazzi-Pearson, V. *New Phytologist* 146:317-324. 2000.

94. **Epidemiology and integrated management of web blight in bamboo nurseries in India.** Mohanan, C. Finnish Forest Research Institute, Research Paper 781, p. 107-121. Proceedings of the 4th meeting of IUFRO Working Party 7.03.04 - Diseases and insects in forest nurseries. 2000.

95. **Experience with different diagnostic techniques to detect *Phytophthora* species in water.** Themann, K.; Werres, S. Finnish Forest Research Institute, Research Paper 781, p. 83-87. Proceedings of the 4th meeting of IUFRO Working Party 7.03.04 - Diseases and insects in forest nurseries. 2000.

96. **Forest nursery extension - means for advisory in plant protection.** Poteri, M. Finnish Forest Research Institute, Research Paper 781, p. 33-37. Proceedings of the 4th meeting of IUFRO Working Party 7.03.04 - Diseases and insects in forest nurseries. 2000.

97. **Genetic variation of *Pyrenopeziza betulicola*, the causative agent of birch leaf spot disease.** Paavolainen, L.; Hantula, J.; Kurkela, T. Finnish Forest Research Institute, Research Paper 781, p. 201-206. Proceedings of the 4th meeting of IUFRO Working Party 7.03.04 - Diseases and insects in forest nurseries. 2000.

98. **Holistic nursery pest management: a new emphasis on seedling health.** Landis, T. D. Finnish Forest Research Institute, Research Paper 781, p. 5-15. Proceedings of the 4th meeting of IUFRO Working Party 7.03.04 - Diseases and insects in forest nurseries. 2000.
99. **Introduction of roottrainer technology in forestry - impact on nursery disease management.** Mohanan, C. Finnish Forest Research Institute, Research Paper 781, p. 39-47. Proceedings of the 4th meeting of IUFRO Working Party 7.03.04 - Diseases and insects in forest nurseries. 2000.
100. **Managing *Botrytis* diseases.** Powell, C. C. Nursery Management and Production 16(5):82, 84. 2000.
101. **Morphological, molecular and pathological characteristics of *Rhizoctonia*-like fungi from Spanish forest nurseries.** El Bakali, M. A.; Martin, M. P. Finnish Forest Research Institute, Research Paper 781, p. 139-149. Proceedings of the 4th meeting of IUFRO Working Party 7.03.04 - Diseases and insects in forest nurseries. 2000.
102. © **Natural products with antifungal activity from *Pseudomonas* biocontrol bacteria.** Ligon, J. M.; Hill, D. S.; Hammer, P. E.; Torkewitz, N. R.; Hofmann, D.; Kempf, H. J.; van Pee, K. H. Pest Management Science 56:688-695. 2000.
103. **New weapons in ornamental disease control: powerful tools for resistance management are available.** Mathers, H. Nursery Management and Production 16(9):43-50, 52-53. 2000.
104. **On the powdery mildew disease of some forest seedlings in Egypt: host range, seasonal variation and influence of light intensity on disease severity.** El-Settawy, A. A. A. Finnish Forest Research Institute, Research Paper 781, p. 207-213. Proceedings of the 4th meeting of IUFRO Working Party 7.03.04 - Diseases and insects in forest nurseries. 2000.
105. © **Overwintering and comparative sampling of *Neoseiulus fallacis* (Acari: Phytoseiidae) on ornamental nursery plants.** Pratt, P. D.; Croft, B. A. Environmental Entomology 29(5):1034-1040. 2000.
106. **Pathogenicity of anamorph of *Ceratobasidium bicorne*.** Lilja, A.; Rikala, R.; Heiskanen, J.; Tervo, L.; Heinonen, R. Finnish Forest Research Institute, Research Paper 781, p. 123-137. Proceedings of the 4th meeting of IUFRO Working Party 7.03.04 - Diseases and insects in forest nurseries. 2000.
107. © **Pathogenicity of *Bursaphelenchus sexdentati*, *Bursaphelenchus leoni* and *Bursaphelenchus hellenicus* on European pine seedlings.** Skarmoutsos, G.; Michalopoulos-Skarmoutsos, H. Forest Pathology 30:149-156. 2000.
108. **Pest problems and fumigation in pine nurseries in southern United States.** Fraedrich, S. W.; Dwinell, L. D. Finnish Forest Research Institute, Research Paper 781, p. 249. Proceedings of the 4th meeting of IUFRO Working Party 7.03.04 - Diseases and insects in forest nurseries. 2000.
109. **Possible use of mycorrhizas and host plant secondary metabolites for control of insect herbivores on Scots pine.** Manninen, A. M.; Holopainen, T.; Vuorinen, M.; Holopainen, J. K. Finnish Forest Research Institute, Research Paper 781, p. 163-175. Proceedings of the 4th meeting of IUFRO Working Party 7.03.04 - Diseases and insects in forest nurseries. 2000.
110. **Preliminary report on root-knot nematode disease of *Acacia mangium* seedlings.** Chuo, M. Finnish Forest Research Institute, Research Paper 781, p. 243-246. Proceedings of the 4th meeting of IUFRO Working Party 7.03.04 - Diseases and insects in forest nurseries. 2000.
111. **Presence of *Fusarium* species in diseased *Pinus radiata* seedlings in forest nurseries in Argentina.** Lori, G.; Salerno, M. L.; Wolcan, S. Finnish Forest Research Institute, Research Paper 781, p. 65-74. Proceedings of the 4th meeting of IUFRO Working Party 7.03.04 - Diseases and insects in forest nurseries. 2000.
112. **A review of foliage disease, and their control, of nursery seedlings in Shimane Prefecture, Japan.** Suto, Y. Finnish Forest Research Institute, Research Paper 781, p. 215-223. Proceedings of the 4th meeting of IUFRO Working Party 7.03.04 - Diseases and insects in forest nurseries. 2000.
113. © **Seedling inoculation distinguishes lodgepole pine families most and least susceptible to gall rust.** White, E. E.; Allen, E. A.; Ying, C. C.; Foord, B. M. Canadian Journal of Forest Research 30:841-843. 2000.

114. **Some new and rare forest tree seedling diseases in the Czech Republic.** Jancarik, V.; Prochazkova, Z. Finnish Forest Research Institute, Research Paper 781, p. 225-230. Proceedings of the 4th meeting of IUFRO Working Party 7.03.04 - Diseases and insects in forest nurseries. 2000.

115. **Status of forest nursery diseases in India and emerging trends in seedling disease management.** Mohanan, C. Finnish Forest Research Institute, Research Paper 781, p. 231-242. Proceedings of the 4th meeting of IUFRO Working Party 7.03.04 - Diseases and insects in forest nurseries. 2000.

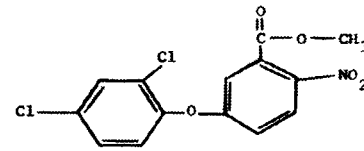
116. **Substitute creature.** Hayes, C. American Nurseryman 192(5):43-45. 2000. To prevent fungal infections on plants, growers can sometimes substitute a beneficial fungus for chemicals.

117. © **Survival of *Sclerotium cepivorum* Sclerotia and *Fusarium oxysporum* chlamydospores in soil amended with cruciferous residues.** Smolinska, U. Journal of Phytopathology 148:343-349. 2000.

118. **Timing fungicide applications for control of Sclerotinia canker: efficacy of fungicides applied to spores, hyphae and diseased seedlings.** Petaisto, R. L.; Juntunen, J. L. Finnish Forest Research Institute, Research Paper 781, p.189-200. Proceedings of the 4th meeting of IUFRO Working Party 7.03.04 - Diseases and insects in forest nurseries. 2000.

119. **Virulence of *Fusarium oxysporum* on Douglas fir germinants: comparison of isolates from nursery soil and roots of healthy and diseased seedlings.** James, R. L.; Perez, R.; Dumroese, R. K.; Wenny, D. L. Finnish Forest Research Institute, Research Paper 781, p. 49-64. Proceedings of the 4th meeting of IUFRO Working Party 7.03.04 - Diseases and insects in forest nurseries. 2000.

120. **Weeds, diseases, insects and mites and use of pesticides in Finnish forest nurseries - results of a survey study.** Juntunen, M. L. Finnish Forest Research Institute, Research Paper 781, p. 17-32. Proceedings of the 4th meeting of IUFRO Working Party 7.03.04 - Diseases and insects in forest nurseries. 2000.



Pesticides

121. © **The fate and mobility of copper from chemical root control barriers in soil and leachate.** Kosuta, S.; Hamel, C. Environmental Pollution 110:165-170. 2000.

122. **IR-4 registers success.** Aylsworth, J. D. Greenhouse Grower 18(8):138-140, 142. 2000. It's a program you may not be aware of, but it helps you almost every day.

123. **The latest on chlorpyrifos.** Nursery Management and Production 16(7):81. 2000. EPA's enforcement of FQPA claims first major victim.

124. **The latest on common pesticides for ornamentals.** Powell, C. C. Nursery Management and Production 16(9):74-76. 2000.



Seedling Harvesting and Storage

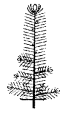
125. © **Effect of warm storage and date of lifting on the quality of Douglas-fir seedlings.** Harper, C. P.; O'Reilly, C. New Forests 20:1-13. 2000.

126. **Seedling lifting and storage and how they relate to outplanting.** Landis, T. D. IN: Forest Vegetation Management Conference, proceedings, 21st annual, p.27-32. 2000.

127. © **Species and seasonal variability in the sensitivity of seedling conifer roots to drying and rough handling.** McKay, H. M.; Milner, A. D. Forestry 73(3):259-270. 2000.

128. © **Storability and root freezing tolerance of Norway spruce (*Picea abies*) seedlings.** Statten, E.; Hellqvist, C.; Lindstrom, A. Canadian Journal of Forest Research 30:964-970. 2000.

Seedling Physiology and Morphology



129. © **Accurate root length measurement by image analysis.** Kimura, K.; Kikuchi, S.; Yamasaki, S. *Plant and Soil* 216:117-127. 1999.
130. © **Annual dynamics of the content of nonstructural saccharides in the context of structural development of vegetative buds of Norway spruce.** Lipavska, H.; Svobodova, H.; Albrechtova, J. *Journal of Plant Physiology* 157:365-373. 2000.
131. © **Chlorophyll fluorescence and CO₂ assimilation of black spruce seedlings following frost in different temperature and light conditions.** Lamontagne, M.; Bigras, F. J.; Margolis, H. A. *Tree Physiology* 20:249-255. 2000.
132. © **Combined effects of shade and drought on tulip poplar seedlings: trade-off in tolerance or facilitation?** Holmgren, M. *Oikos* 90:67-78. 2000.
133. © **Container-grown tree seedling responses to sodium chloride applications in different substrates.** Fostad, O.; Pedersen, P. A. *Environmental Pollution* 109:203-210. 2000.
134. © **The effects of intermittent flooding on seedlings of three forest species.** Anderson, P. H.; Pezeshki, S. R. *Photosynthetica* 37(4):543-552. 1999.
135. © **Frost hardiness, height, and dormancy of 15 short-day, nursery-treated interior spruce seed lots.** Hawkins, C. D. B.; Shewan, K. B. *Canadian Journal of Forest Research* 30:1096-1105. 2000.
136. © **Growth responses of *Quercus petraea*, *Fraxinus excelsior* and *Pinus sylvestris* to elevated carbon dioxide, ozone and water supply.** Broadmeadow, M. S. J.; Jackson, S. B. *New Phytologist* 146:437-451. 2000.
137. © **The influence of temperature, daylength and calendar date on cold tolerance of *Rhododendron*.** Cameron, R. W. F.; Dixon, G. R. *Journal of Horticultural Science and Biotechnology* 75(4):481-487. 2000.

138. **Morphological and physiological responses of oak seedlings (*Quercus petraea* and *Q. robur*) to moderate drought.** Thomas, F. M.; Gausling, T. *Annals of Forest Science* 57:325-333. 2000.

139. © **Photosynthetic characteristics of 10 *Acacia* species grown under ambient and elevated atmospheric CO₂.** Evans, J. R.; Schortemeyer, M.; McFarlane, N.; Atkin, O. K. *Australian Journal of Plant Physiology* 27:13-25. 2000.

140. **Root electrolyte leakage and root growth potential as indicators of spruce and larch establishment.** McKay, H. M. *Silva Fennica* 32 (3):241-252. 1998.

141. **Water content is often not a good parameter for tree quality.** Joustra, M. K.; Kunneman, B. P. A. M.; Ravesloot, M. B. M. *Acta Horticulturae* 517:31-37. 2000.

SO. **Effects of light on root growth in the early establishment phase of western larch (*Larix occidentalis*) and Douglas-fir (*Pseudotsuga menziesii*).** Ovalle, P. M.S. thesis, University of Idaho. 27 p. 2000. OBTAIN VIA INTERLIBRARY LOAN through your local library.

Seed



142. © **Beneficial effects of moist chilling on the seeds of black spruce (*Picea mariana* [Mill.] B.S.P. Wang, B. S. P.; Berjak, P. *Annals of Botany* 86:29-936. 2000.**

143. **Dormancy of yellow cedar (*Chamaecyparis nootkatensis*) [D. Don] Spach) seeds is effectively terminated by treatment with 1-propanol or nitrate in combination with a warm water soak, gibberellin and moist chilling.** Xia, J. H.; Kermode, A. R. *Seed Science and Technology* 28:227-240. 2000.

144. **Dry after ripening does not stimulate the germination of shallowly dormant Sitka spruce (*Picea sitchensis* [Bong. Carr.] seeds.** Gosling, P. G. *Seed Science and Technology* 28:507-511. 2000.

145. **Effect of desiccation and temperature on germination and vigour of the seeds of *Hopea parviflora* Beddome and *H. ponga* (Dennst.) Mabb.** Rajeeswari Dayal, B.; Kaveriappa, K. M. *Seed Science and Technology* 28:497-506. 2000.

146. © **Germination response of seven east Australian *Grevillea* species (Proteaceae) to smoke, heat exposure and scarification.** Morris, E. C. *Australian Journal of Botany* 48:179-189. 2000.

147. © **Impact of *Leptoglossus occidentalis* (Hemiptera: Coreidae) on Douglas-fir seed production.** Bates, S. L.; Borden, J. H.; Kermode, A. R.; Bennett, R. B. *Journal of Economic Entomology* 93(5):1444-1451. 2000.

148. © **Soluble sugar content of white spruce (*Picea glauca*) seeds during and after germination.** Downie, B.; Bewley, J. D. *Physiologia Plantarum* 110:1-12. 2000.

149. **Using the *fluorescein diacetate* staining method to estimate seed viability of jack pine, black spruce, and white spruce.** Noland, T. L.; Mohammed, G. H.; Seymour, N. H. *Ontario Forest Research Institute, Forest Research Note* 58. 4 p. 1999.

Soil Management & Growing Media



150. **Comparison shopping.** Marquardt, D. *American Nurseryman* 192(7):50-52, 54, 56; 58-59. 2000. Growers need to shop around for media that result in optimal plant growth at minimal cost.

151. **Get the pHacts on fertilizer.** Steinkamp, R. *Greenhouse Grower* 18(8):28, 37, 40. 2000. To manage pH properly, growers need to know the factors that influence it. Here's the low-down on how fertilizer affects growing mix pH.

152. **Media moisture.** Henne, L. *Greenhouse Grower* 18(8):94. 2000. Growers can balance growing media's air and water ratio with Soax Concentrate wetting agent from Smithers-Oasis USA.

153. **Mixing media.** Davis T. *Nursery Management and Production* 16(7):16(7):45-46, 48. 2000. Tom Dodd Nurseries has the right recipe.

154. **The use of coir as a containerized growing medium for Douglas-fir fir seedlings.** Rose, R.; Haase, D. L. *Native Plants Journal* 1(2):107-111. 2000.

155. **What's the dirt on soilless media testing?** Miller, M. *Farwest Magazine* 44(8):69-72. 2000. An ongoing, regular examination of your media will help you maximize crop growth and hardiness and avoid any surprises.



Tropical Forestry & Agroforestry

156. © **Arbuscular mycorrhiza inoculum potential in natural and managed tropical montane soils in Costa Rica.** Maldonado, J. D.; Tainter, F. H.; Skipper, H. D.; Lacher, T. E. *Tropical Agriculture* 77(1):27-32. 2000.

157. © **Does proximity to conspecific adults influence the establishment of ectomycorrhizal trees in rain forest?** Newbery, D. M.; Alexander, I. J.; Rother, J. A. *New Phytologist* 147:401-409. 2000.

158. **Effect of plant growth regulators on seed germination of *Sapindus trifoliatus* Vahl.** Naidu, C. V.; Rajendrudu, G.; Swamy, P. M. *Seed Science and Technology* 28:249-252. 2000.

159. **Effect of *Rhizobium* inoculation on growth and physiology of *Acacia auriculiformis* seedlings under nursery conditions.** Kannan, D.; Paliwal, K. *Winrock International Institute for Agricultural Development, Forest, Farm, and Community Tree Research Reports* 4:48-51. 1999.

160. © **Enriching the rainforest with native fruit trees: an ecological and economic analysis in Los Tuxtlas (Veracruz, Mexico).** Ricker, M.; Mendelsohn, R. O.; Daly, D. C.; Angeles, G. *Ecological Economics* 31:439-448. 1999.

161. Establishment options for *Gliricidia sepium* in a seasonally dry area of Bali, Indonesia: comparison of early performance between seedlings and cuttings. Roshetko, J. M.; Nitit, M. I.; Lana, K.; Sukanten, W.; Puger, A. W. Winrock International Institute for Agricultural Development, Forest, Farm, and Community Tree Research Reports 4:78-82. 1999.

162. © Forest protection and reforestation in Costa Rica: evaluation of a clean development mechanism prototype. Subak, S. Environmental Management 26(3):283-297. 2000.

163. Growth response of *Acacia angustissima* to vesicular-arbuscular mycorrhizal inoculation. Costa, N. de Lucena; Paulino, V. T. Winrock International Institute for Agricultural Development, Forest, Farm, and Community Tree Research Reports 4:51-53. 1999.

164. A possible pretreatment for seeds of tropical tree species. Harsh, N. S. K.; Ojha, B. M. Seed Science and Technology 28:513-516. 2000.

165. Propagating *Eucalyptus* species -recommendations for smallholders in the Philippines. Bertomeu, M. G.; Sungkit, R. L. Winrock International Institute for Agricultural Development, Forest, Farm, and Community Tree Research Reports 4:68-72. 1999.

166. Rapid viability loss in seeds of Palmilla (*Chamaedorea radicalis* Mart.) from El Cielo Biosphere Reserve. Agil, M. R.; Jurado, E.; Sanchez-Ramos, G.; Trejo-Hernandez, L.; Rios, F. L. Southwestern Naturalist 45(3):373-375. 2000.

167. © Seed size variation and its effects on germination, growth and seedling survival in *Acacia nilotica* subsp. *indica* (Benth.) Brenan. Shaukat, S. S.; Siddiqui, Z. S.; Aziz, S. Pakistan Journal of Botany 2(2):253-263. 1999.

168. © Seedling indices of four tree species in nursery and their correlations with field growth in Tamil Nadu, India. Rawat, J. S.; Singly T. P. Agroforestry Systems 49:289-300. 2000.

169. © Sowing date, shade, and irrigation affect big-leaf mahogany (*Swietenia macrophylla* King). Morris, M. H.; Negreros-Castillo, P.; Mize, C. Forest Ecology and Management 132:173-181. 2000.

170. Sowing of botanical seeds and height at transplanting *Erythrina maysorensis* and its establishment. Alonso, J.; Febles, G.; Ruiz, T. E.; Gutierrez, J. C. Cuban Journal of Agricultural Science 33:301-304. 1999.

171. Use of humic acid in promoting growth of young *Coffee robusta* seedlings in Nigeria. Obatolu, C. R. Colloq. Sci. Int. Cafe, 18th, 1999, p. 449451. 1999.

SO. Agroforestry guides for Pacific Islands. Elevitch, C. R.; Wilkinson, K. M. Permanent Agriculture Resources. 239 p. 2000. #1: Information resources; #2: Multipurpose trees for agroforestry; #3: Nontimber forest products; #4: Integrating understory crops with tree crops; #5: Introduction to integrating trees into Pacific Island farm systems; #6: Choosing timber species for Pacific Island agroforestry; #7: Economics of farm forestry; #8: Multipurpose windbreaks. ORDER FROM: Permanent Agriculture Resources, P.O. Box 428, Holualoa, HI 96725. Phone: (808) 324-4427. Fax: (808) 324-4129. www.agroforest.net.

Vegetative Propagation and Tissue Culture



172. Clonal propagation of conifers by somatic embryogenesis. Attree, S.; Kong, L.; Denchev, P. IN: Forest Vegetation Management Conference, proceedings, 21st annual, p.22. 2000.

173. Propagation of *Alnus maritima* from softwood cuttings. Schrader, J. A.; Graves, W. R. HortScience 35(2):293-295. 2000.

Water Management



174. © Finite and nonrenewable. Sakamoto, G. Environmental Protection 11(10):20-25. 2000. UV disinfection of reclaimed wastewater: The North American experience.

175. **Irrigation 101.** Haman, D. Z. American Nurseryman 192(7):90-93. 2000. Selecting the proper irrigation system for your operation is crucial.

176. **Strategic irrigation.** Tilt, K. American Nurseryman 192(3):30-32, 34-37. 2000. By modernizing irrigation systems, growers can promote container-plant growth, improve production and reduce runoff.

177. **Water quality: not a drop to lose.** Well, E. Greenhouse Grower 18(8):131-132, 134-136. 2000. Growers will need to adapt to the wave of changing water regulations.

178. **When should you water?** Ling, P. Greenhouse Management and Production 20(9):41-42, 44, 46. 2000. New sensor technologies developed for irrigation management can help growers detect plant water needs as early as possible.

180. © **Effect of adjuvants on control of nutsedge (*Cyperus esculentus* and *C rotundus*) by imazapic and imazethapyr.** Grichar, W. J.; Sestak, D. C. Crop Protection 19:461-465. 2000.

181. © **Establishment and growth in seedlings of *Fagus sylvatica* and *Quercus robur*: influence of interference from herbaceous vegetation.** Lof, M. Canadian Journal of Forest Research 30:855-864. 2000.

182. © **Growth inhibitory effects of nutgrass (*Cyperus rotundus*) on rice (*Oryza sativa*) seedlings.** Quayyum, H. A.; Mallik, A. U.; Leach, D. M.; Gottardo, C. Journal of Chemical Ecology 26 (9):2221-2231. 2000.

183. **Immortal combat.** Harvey, R. G.; Fischer, D. W. American Nurseryman 192(5):30-32. 2000. Some weeds have become resistant to herbicides, but growers can take the proper measures to combat this problem.

184. © **Modeling vertical and lateral seed bank movements during mouldboard ploughing.** Colbach, N.; Roger-Estrade, J.; Chauvel, B.; Caneill, J. European Journal of Agronomy 13 :11 1-124. 2000.

185. © **Selective uprooting by weed harrowing on sandy soils.** Kurstjens, D. A. G.; Perdok, U. D.; Goense, D. Weed Research 40(5):431-447. 2000.

186. **Using noxious weed lists to prioritize targets for developing weed management strategies.** Skinner, K.; Smith, L. Rice., P. Weed Science 48:640-644. 2000.



Weed Control

179. **Controlling weeds in containers.** Mathers, H. Nursery Management and Production 16(7):35-38, 40, 42, 44. 2000. Some novel ways that may become standard treatments include GeoDiscs, a geotextile disk with a coating of Spinout, and 2 new mulching products - Wulpack and PennMulch.





Native Plants Journal :
Technical Information for Growers and Users of Native Plants

The Native Plants Journal (NPJ) is a cooperative effort of the USDA Forest Service and the University of Idaho, with assistance from the USDA Agricultural Research Service and the Natural Resource Conservation Service. Our goal is to provide technical, yet practical, information on the growing and use of native plants for restoration, conservation, reforestation, landscaping, and roadsides. Two full-color issues, each containing about a dozen articles, will be published yearly. The first issue of NPJ was released in January, 2000. A limited supply of complimentary copies of the premier issue are available from the address below.

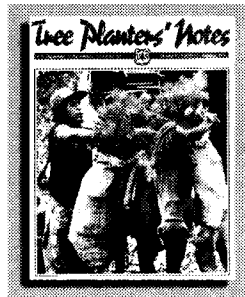
Submit a paper to NPJ: We need contributions from scientists, academics, field personnel, nursery managers, and others concerning all aspects of growing and using native plants.

Papers are published in two categories: refereed or general technical. Please contact the editor-in-chief if you have an idea for a paper or just want more information:

Kas Dumroese
Forest Research Nursery
University of Idaho
Moscow, ID 83844-1137
USA
TEL: 800.885.3509
FAX: 208.885.6226
E-MAIL: Dumroese@uidaho.edu



Please subscribe: We hope to be able to make NPJ self sufficient from subscriptions and advertising fees, but need your help. The annual subscription is \$30 for individuals and \$60 for libraries. Online subscriptions will be possible soon but for the present, send payment to:

Native Plants Journal
University of Idaho Press
PO Box 441107
Moscow, Idaho 83844-1107
Toll-free: 800.885.9059



Superintendent of Documents Subscriptions Order Form

Order Processing Code:
*6135

Charge your order
It's Easy!  

To fax your orders (202) 512-2233
To phone your orders (202) 512-1800

YES, enter my subscription as follows:

___subscriptions to **TREE PLANTERS' NOTES (TPN)** for \$8.00 per year (\$10.00 foreign).

The total cost of my order is \$_____.

Price includes regular shipping and handling and is subject to change.

International customers please add 25%.

For privacy protection, check the box below:

Do not make my name available to other mailers

Please Choose Method of Payment:

Check Payable to the Superintendent of Documents

GPO Deposit Account

Visa or MasterCard Account

(expiration date)

*Thank you for
your order!*

Company or personal name (Please type or print)

Additional address /attention line

Street address

City, State, ZIP Code

Daytime phone including area code

Purchase Order Number (optional)

Authorizing Signature 11/96

Mail To: New Orders, Superintendent of Documents
P.O. Box 371954, Pittsburgh, PA 15250-7954

