

Copies of the following journal articles or publications are free and can be ordered using the Literature Order Form on the last page. Just write in the appropriate number or letter on the form and return it to us. Note that there are three restrictions:

- 1. Limit in the Number of Free Articles:** In an effort to reduce mailing costs, we are limiting the number of free articles that can be ordered through the FNN literature service. All subscribers will be restricted to 25 free articles per issue. If you still want additional articles, then you will have to order them on a fee basis from Donna Loucks, the librarian who maintains the FNN database. Just fill in the number of the fee articles on the bottom half of the order form, return it to us, and we will forward it to Donna.
 - 2. Copyrighted Material.** Items with © are copyrighted and require a fee for each copy, so only the title page and abstract will be provided through this service. If you want the entire article, then you can order a copy from a library service or from Donna.
 - 3. Special Orders (SO).** Special orders are books or other publications that, because of their size or cost, require special handling. For some, the Forest Service has procured copies for free distribution, but others will have to be purchased. Prices and ordering instructions are given below or following each listing in the New Nursery Literature section.
-
-

Bareroot Production



- 1. Effect of covering on the extension of *F. sylvatica*, *P. avium* and *A. pseudoplatanus* seedlings.** Andersen, L.; Bronnum, P.; Jensen, M. *Acta Horticulturae* 515:207-212. 2000.
- 2. PennMulch use for seedbeds.** Flinn, C. C. *International Plant Propagators' Society, combined proceedings 1999*, 49:263-264. 2000. PennMulch is made from recycled and shredded newsprint, dry compressed into pellets that have 1N-3P-1K fertilizer incorporated into them.
- 3. Seedling production in the northern plains.** Morgenson, G. *International Plant Propagators' Society, combined proceedings 1999*, 49:614-616. 2000.

Business Management



- 4. Be prepared for labor audits.** *Nursery Management and Production* 17(5):73-76. 2001.
- 5. The cost of noncompliance.** *Nursery Management and Production* 17(4):77-. 2001. Why it pays to adhere to Department of Labor regulations.
- 6. Fit the task to the person.** Bartok, J. W., Jr. *Greenhouse Management and Production* 21(1):78-79. 2001.
- 7. How big must a nursery firm be to produce a reasonable family income?** van Blokland, P. J.; Wang, M.; Haydu, J. J.; Hodges, A. W. *Acta Horticulturae* 536:223-230. 2000.
- 8. Keep your records straight.** Whitcomb, C. E. *Nursery Management and Production* 16(12):55-57. 2000. Tracking detailed information can prevent disasters.

9. **Propagation safety.** Elliott, F. A. International Plant Propagators' Society, combined proceedings 1999, 49:5 80-5 83. 2000.

10. **Should you start your own business?** Thomas, P. A.; Thomas, W. A. Greenhouse Management and Production 21(6):20-27. 2001. 10 questions you need to answer before you invest.

11. **Steps in the development of a new nursery.** Ravenwood, I. International Plant Propagators' Society, combined proceedings 1999, 49:153-156. 2000. Experiences of North Forest Products building a container nursery in Tasmania.



Container Production

12. © **Changes in interior Douglas-fir root development in containers after copper and auxin treatments.** Dumroese, R. K. Western Journal of Applied Forestry 15(4):213-216. 2000.

13. **Getting oriented.** Huang, B. K. American Nurseryman 192(10):33-34. 2000. Properly designed containers can produce quality plants with health root systems.

14. **Growing plants in a cinder block.** Whitcomb, C. International Plant Propagators' Society, combined proceedings 1999, 49:527-531. 2000.

15. **Measuring copper root-pruning effect.** Nelson, W. R. International Plant Propagators' Society, combined proceedings 1999, 49:119-123. 2000.

16. **The problems with copper-treated pots: 7 reasons why I don't recommend this increasingly common practice.** Whitcomb, C. E. Nursery Management and Production 17(2):76-78. 2001.

17. **Root pruning can influence first order lateral root development of containerized plants.** Nelson, W. R. International Plant Propagators' Society, combined proceedings 1999, 49:96-103. 2000.

18. **Tackling heat stress.** Mathers, H. Nursery Management and Production 17(3):73-74, 76, 78. 2001. High container temperatures can seriously limit plant growth.



Diverse Species

19. **Comparing perceptions of native status.** Smith, S. E.; Window, S. R. Native Plants Journal 2(1):5-11. 2001.

20. **Differential effects of four abiotic factors on the germination of salt march annuals.** Noe, G. B.; Zedler, J. B. American Journal of Botany 87(11):1679-1692. 2000.

21. © **Dormancy-breaking and germination requirements of seeds of four *Lonicera* species (Caprifoliaceae) with underdeveloped spatulate embryos.** Hidayati, S. N.; Baskin, J. M.; Baskin, C. C. Seed Science Research 10(4):459-469. 2000.

22. **Early harvest of squirreltail seed.** Doescher, P. S. Journal of Range Management 54(2):197-199. 2001.

23. **The effect of salinity on different developmental stages of an endemic annual plant, *Aster laurentianus* (Asteraceae).** Houle, G.; Morel, L.; Reynolds, C. E.; Siegel, J. American Journal of Botany 88(1):62-67. 2001.

24. © **Effects of habitat nutrients and seed sources on growth and expansion of *Typha domingensis*.** Miao, S.; Newman, S.; Sklar, F. H. Aquatic Botany 68(4):297-311. 2000. Cattails in the Everglades.

25. **Effects of stratification and GA3 on seed germination of a sand stabilizing grass *Leymus arenarius* used in reclamation.** Greipsson, S. Seed Science and Technology 29(1):1-10. 2001.

26. **Ethnobotany, culture, management, and use of common camas.** Stevens, M.; Darris, D. C.; Lambert, S. M. Native Plants Journal 2(1):47-53. 2001.

27. **Experiences establishing native wetland plants in a constructed wetland.** Steinfeld, D. Native Plants Journal 2(1):3 7-41. 2001.

28. **Germination conditions for *Briza subaristata*: pretreatments and temperature effects.** Ferrari, L.; Lopez, C. Seed Science and Technology 28:631-639. 2000. A native grass of the humid Argentine pampa prairie.

29. **Germination improvement of *Atriplex nummularia* (Chenopodiaceae) by pericarp elimination.** Peluc, S. L.; Parera, C. A. *Seed Science and Technology* 28(3):559-566. 2000.
30. © **Germination studies of three dwarf shrubs (*Vaccinium*, Ericaceae) of Northern Hemisphere coniferous forests.** Baskin, C. C.; Milberg, P.; Andersson, L.; Baskin, J. M. *Canadian Journal of Botany* 78(12):1552-1560. 2000.
31. **Influence of seed age and inbreeding on germination and seedling growth in *Hibiscus moscheutos* (Malvaceae).** Liu, H.; Spira, T. P. *Journal of the Torrey Botanical Society* 128(1):16-24. 2001.
32. **Irrigation and mulch effects on desert shrub transplant establishment.** Bainbridge, D.; Tiszler, J.; MacAller, R.; Allen, M. F. *Native Plants Journal* 2 (1):25-29. 2001.
33. © **Merits of native and introduced Triticeae grasses on semiarid rangelands.** Asay, K. H.; Horton, W. H.; Jensen, K. B.; Palazzo, A. J. *Canadian Journal of Plant Science* 81(1):45-52. 2001.
34. © **Microbial enhancement of seed germination in *Rosa corymbifera* 'Laxa'.** Morpeth, D. R.; Hall, A. M. *Seed Science Research* 10(4):489-494. 2000.
35. **Morphophysiological dormancy in seeds of *Chamaelirium luteum*, a long-lived dioecious lily.** Baskin, C. C.; Baskin, J. M.; Chester, E. W. *Journal of the Torrey Botanical Society* 128(1):7-15. 2001.
36. **Mycorrhizal fungi and cold-assisted symbiotic germination of the federally threatened eastern prairie fringed orchid, *Platanthera leucophaea* (Nuttall) Lindley.** Zettler, L. W.; Stewart, S. L.; Bowies, M. L.; Jacobs, K. A. *American Midland Naturalist* 145(1):168-175. 2001.
37. **Native or not: subjective labels and their application in wildland plantings.** Kitchen, S. G.; McArthur, E. D. *Native Plants Journal* 2(1):21-24. 2001.
38. **Nonlocal transplantation and outbreeding depression in the subshrub *Lotus scoparius* (Fabaceae).** Montalvo, A. M.; Ellstrand, N. C. *American Journal of Botany* 88(2):258-269. 2001.
39. **Nonsymbiotic seed propagation of two Japanese native orchids for native restoration.** Fukasawa, K.; Kage, Y. *International Plant Propagators' Society, combined proceedings* 1999, 49:667-668. 2000.
40. **Observations on seed propagation of 5 Mississippi wetland species.** Grabowski, J.M. *Native Plants Journal* 2(1):67-68. 2001.
41. **Perigynium removal and cold, moist stratification improve germination of *Carex nebrascensis* (Nebraska sedge).** Hoag, J. C.; Dumroese, R. K.; Sellers, M. E. *Native Plants Journal* 2(1):63-68. 2001.
42. **Plants for ecological restoration: a foundation and a philosophy for the future.** Booth, D. T.; Jones, T. A. *Native Plants Journal* 2(1):12-20. 2001.
43. **Propagation of *Dicksonia antarctica*.** van der Staay, T. *International Plant Propagators' Society, combined proceedings* 1999, 49:178-180. 2000. A tree fern from Australia and Tasmania, which is propagated by spores.
44. **Propagation of endangered species: variable germination of pink sand verbena from Pacific Coast beaches.** Kaye, T. N. *International Plant Propagators' Society, combined proceedings* 1999, 49:617-621. 2000.
45. **The propagation of native plants.** Metcalf, L. *International Plant Propagators' Society, combined proceedings* 1999, 49:89-92. 2000.
46. **Propagation of promising high-elevation species native to the Colorado Plateau.** Busco, J. K.; Maschinski, J. *International Plant Propagators' Society, combined proceedings* 1999, 49:576-580. 2000.
47. **Propagation protocol for *Gordonia lasianthus*.** Colodney, E. *Native Plants Journal* 2(1):42-43. 2001.
48. **Propagation protocol for Lizard's tail (*Saururus cernuus*).** Bennett, D. J. *Native Plants Journal* 2(1):44-45. 2001.
49. **Propagation protocol for ninebark (*Physocarpus opulifolius*).** Hoss, G. A. *Native Plants Journal* 2(1):60-61. 2001.
50. © **Restoration ecology of an endangered plant species: establishment of new populations of *Cirsium pitcheri*.** Rowland, J.; Maun, M. A. *Restoration Ecology* 9(1):60-70. 2001.
51. **Revegetation of a San Francisco coastal salt marsh.** Heimbinder, E. *Native Plants Journal* 2(1):5459. 2001.

52. **Riparian zone restoration: field requirements and nursery opportunities.** Hoag, J. C.; Landis, T. D. *Native Plants Journal* 2(1):30-35. 2001.

53. **Seed treatment of New Zealand *Sophora* species with concentrated sulfuric acid to hasten germination.** Appleton, E. J. *International Plant Propagators' Society, combined proceedings 1999*, 49:113-114. 2000.

54. **Soil amendments and planting techniques: campsite restoration in the Eagle Cap Wilderness, Oregon.** Cole, D. N.; Spildie, D. R. IN: USDA Forest Service, Rocky Mountain Research Station, *Proceedings RMRS-P-15*, p. 181-187. *Wilderness science in a time of change conference, v.5: wilderness ecosystems, threats, and management.* 2000.

55. **Starting new populations of longleaf pine ground-layer plants in the outer coastal plain of South Carolina, USA.** Glitzenstein, J. S.; Streng, D. R.; Wade, D. D.; Brubaker, J. *Natural Areas Journal* 21 (1):89-110. 2001.

56. **Studies on the ecological life cycle of the native winter annual grass *Alopecurus carolinianus*, with particular reference to seed germination biology in a floodplain habitat.** Baskin, C. C.; Baskin, J. M.; Chester, E. W. *Journal of the Torrey Botanical Society* 127(4):280-290. 2000.

57. © **Survival of introduced *Tuber melanosporum* at two sites in Israel as measured by occurrence of mycorrhizas.** Kagan-Zur, V.; Freeman, S.; Luzzati, Y.; Roth-Bejerano, N.; Shabi, E. *Plant and Soil* 229(2):159-166. 2001. Spores of the black truffle were used to inoculate oak seedlings and hazel suckers.

58. **Tasmania native orchids: their propagation and culture.** Smith, J. F. *International Plant Propagators' Society, combined proceedings 1999*, 49:173-177. 2000.

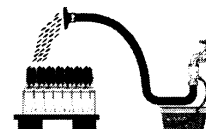
59. **Two ways to crack the nut -*Aesculus parviflora*.** Jones, A. M. *International Plant Propagators' Society, combined proceedings 1999*, 49:313-317. 2000.

60. **Using a laundry spin dryer to remove surface water from seeds.** Creasey, W.; Creasey, K. *Native Plants Journal* 2(1):62. 2001.

SO. 100 easy-to-grow native plants for American gardens in temperate zones. Johnson, L. Firefly Books, Ltd. 160 p. 1999. ORDER FROM: any book seller. ISBN 1-552009-327-1.

SO. The New England Wild Flower Society Guide to growing and propagating wildflowers in the United States and Canada.

Cullina, W. Houghton Mifflin Co. 322 p. 2000. ORDER FROM: any book seller. ISBN 0-395-96609-4. Contents: Statement on wild collection; Ecological gardening (Light, soil, temperature, diseases); Floristic provinces; Encyclopedia of plants; Propagation (seed, germination, cuttings); Wildflowers for various sites; Sources of propagated native plants and seeds.



Fertilization and Nutrition

61. © **Ammonium and nitrate acquisition by plants in response to elevated CO₂ concentration: the roles of root physiology and architecture.** Bauer, G. A.; Berntson, G. M. *Tree Physiology* 21(2-3):137-144. 2001.

62. © **Are differences in root growth of nitrogen catch crops important for their ability to reduce soil nitrate-N content, and how can this be measured?** Thorup-Kristensen, K. *Plant and Soil* 230(2):185-195. 2001.

63. © **Effects of nutrient supply on photosynthetic acclimation and photoinhibition of one-year-old foliage of *Picea abies*.** Grassi, G.; Colom, M. R.; Minolta, G. *Physiologia Plantarum* 111(2):245-254. 2001.

64. © **Effects of serpentine soil factors on Virginia pine (*Pinus virginiana*) seedlings.** Miller, S. P.; Gumming, J. R. *Tree Physiology* 20(16):1129-1135. 2000.

65. © **Foliar urea pretreatment tempers inefficient N recovery resulting from copper chelate (CuEDTA) defoliation of apply nursery plants.** Guak, S.; Cheng, L.; Fuchigami, L. H. *Journal of Horticultural Science and Biotechnology* 76(1):35-39. 2001.

66. © **Influence of elevated CO₂ and mycorrhizae on nitrogen acquisition: contrasting responses in *Pinus taeda* and *Liquidambar styraciflua*.** Constable, J. V. H.; Bassirirad, H.; Lussenhop, J.; Zerihun, A. *Tree Physiology* 21(2-3):83-91. 2001.

67. © **The influence of nitrogen supply on growth and internal recycling of nitrogen in young *Nothofagus fusca* trees.**

Stephens, D. W.; Millard, P.; Turnbull, M. H.; Whitehead, D. Australian Journal of Plant Physiology 28:249-255. 2001.

68. © **Interactive effects of elevated CO₂ concentration and nitrogen supply on partitioning of newly fixed ¹³C and ¹⁵N between shoot and roots of pedunculate oak seedlings (*Quercus robur*).**

Maillard, P.; Guehl, J. M.; Muller, J. F.; Gross, P. Tree Physiology 21(2-3):163-172.2001.

69. © **Long-term effects of lime application on ¹⁵N availability to Sitka spruce seedlings growing in pots containing peat soils.** Kakei, M.; Clifford, P. E. Forestry 71(4):393-401. 2000.

70. © **Natural and induced cadmium-accumulation in poplar and willow: implications for phytoremediation.** Robinson, B. H.; Mills, T. M.; Petit, D.; Fung, L. E.; Green, S. R.; Clothier, B. E. Plant and Soil 227(1-2):301-306. 2000.

71. © **Nitrogen and base cation uptake in seedlings of *Acer pseudoplatanus* and *Calamagrostis villosa* exposed to an acidified environment.** Gloser, V.; Gloser, J. Plant and Soil 226(1):71-77. 2000.

72. © **Organic farming: challenge of timing nitrogen availability to crop nitrogen requirements.** Pang, X. P.; Letey, J. Soil Science Society of America Journal 64 (1):247-253. 2000.

73. © **Response of western hemlock crosses to nitrogen and phosphorus supply.** Hawkins, B. J.; Henry, G.; King, J. New Forests 20(2):135-143. 2000.

74. © **Root system architecture and receptivity to mycorrhizal infection in seedlings of *Cedrus atlantica* as affected by nitrogen source and concentration.** Boukcim, H.; Pages, L.; Plassard, C.; Mousain, D. Tree Physiology 21(2-3):109-115. 2001.

75. © **Salt tolerance screening of selected Australian woody species -- a review.** Niknam, S. R.; McComb, J. Forest Ecology and Management 139(1-3):1-19. 2000.

76. © **Soil and crop response to variable-rate liming for two Michigan fields.** Pierce, F. J.; Warncke, D. D. Soil Science Society of America Journal 64(2):774-780. 2000.

77. © **Soluble proteins and dehydrins in nitrogen-fertilized Scots pine seedlings during deacclimation and the onset of**

growth. Kontunen-Soppela, S.; Taulavuori, K.; Taulavuori, E.; Lahdesmaki, P.; Laine, K. Physiologia Plantarum 109(4):404-409. 2000.

78. © **Trends in rhizobial inoculant production and use.**

Catroux, G.; Hartmann, A.; Revellin, C. Plant and Soil 230(1):21-30. 2001.

79. © **Use of urea to correct immature urban composts for agricultural purposes.** Madrid, F.; Murillo, J. M.; Lopez, R.; Cabrera, F. Communications in Soil Science and Plant Analysis 31(15-16):2635-2649. 2000.



General and Miscellaneous

80. © **Afforestation in Israel: a source of social goods and services.** Ginsberg, P. Journal of Forestry 98(3):32-36. 2000. Tree planting has played a pivotal role in renewing Israel's battered Mediterranean landscape, enhancing not only its physical development but also social development by providing employment, recreational, educational, and commodity services.

81. **The current state and problems of forest regeneration in the north of European Russia.** Babich, N. A.; Barabin, A. L.; Tutygin, G. S. IN: Forest regeneration in the northern parts of Europe, p. 35-40. Finnish Forest Research Institute, Research Papers 790. 2000.

82. **Planting stock production and increasing forest yield in the north of European Russia.** IN: Forest regeneration in the northern parts of Europe, p. 141-146. Finnish Forest Research Institute, Research Papers 790. 2000.

83. © **Reforestation rules in Oregon: lessons learned from strict enforcement.** Rose, R.; Coate, J. Journal of Forestry 98(5):24-28. 2000.

84. **Return of the giants: restoring white pine ecosystems by breeding and aggressive planting of blister rust-resistant white pines.** Fins, L.; Byler, J.; Ferguson, D.; Harvey, A.; Mahalovich, M. F.; McDonald, G.; Miller, D.; Schwandt, J.; Zack, A. University of Idaho, Idaho Forest, Wildlife and Range Experiment Station, Station Bulletin 72. 2001.

85. **Seedling production for reforestation.** Rikala, R. IN: Forest regeneration in the northern parts of Europe, p. 127-140. Finnish Forest Research Institute, Research Papers 790. 2000. In Finland.

86. © **Some considerations when using a microwave oven as a laboratory research tool.** Diprose, M. F. *Plant and Soil* 229(2):271-280. 2001.

Genetics and Tree Improvement



Genome
Aa
Bb
cc
Dd

87. © **Genetic selection for cold hardiness in coastal Douglas-fir seedlings and saplings.** O'Neill, G. A.; Aitken, S. N.; Adams, W. T. *Canadian Journal of Forest Research* 30(11):1799-1807. 2000.

88. © **Genotypic diversity and clone size in old-growth populations of coast redwood (*Sequoia sempervirens*).** Rogers, D. L. *Canadian Journal of Botany* 78(11):1408-1419. 2000.

89. © **Genotypic variation in carbon isotope discrimination and gas exchange of ponderosa pine seedlings under two levels of water stress.** Olivas-Garcia, J. M.; Cregg, B. M.; Hennessey, T. C. *Canadian Journal of Forest Research* 30(10):1581-1590. 2000.

90. © **Provenances and families show different patterns of relationship between bud set and frost hardiness in *Picea abies*.** Johnsen, O.; Skroppa, T. *Canadian Journal of Forest Research* 30:1858-1866. 2000.

91. © **Variation among seed sources of silver birch in Scotland.** Worrell, R.; Cundall, E. P.; Malcolm, D. C.; Ennos, R. A. *Forestry* 73(5):419-435. 2000.

Mycorrhizae & Beneficial Microorganisms



92. © **Does origin of mycorrhizal fungus or mycorrhizal plant influence effectiveness of the mycorrhizal symbiosis?** Van der Heijden, E. W.; Kuyper, T. W. *Plant and Soil* 230(2):161-174. 2001.

93. © **Effects of inoculation with PGPR *Bacillus* and *Pisolithus tinctorius* on *Pinus pinea* L. growth, bacterial rhizosphere colonization, and mycorrhizal infection.** Probanza, A.; Mateos, J. L.; Lucas Garcia, J. A.; Felipe, M. R. de; Gutierrez Manero, F. J. *Microbial Ecology* 41(2):140-148. 2001.

94. **Effects of various nitrogen loads on the nitrate reductase activity in roots and mycorrhizas of Norway spruce seedlings.** Brnner, L.; Brodbeck, S.; Genenger, M. *Phyton* 40(4):43-48. 2000.

95. © ***Glomus claroideum*, an arbuscular mycorrhizal fungus new to Ireland, and its distribution in an Irish tree nursery.** O'Neill, J. J. M.; Mitchell, D. T. *Proceedings of the Royal Irish Academy* 99B(3):197-203. 1999.

96. © **The impacts of broadcast burning after clearcutting on the diversity of ectomycorrhizal fungi associated with hybrid spruce seedlings in central British Columbia.** Mah, K.; Tackaberry, L. E.; Egger, K. N.; Massicotte, H. B. *Canadian Journal of Forest Research* 31(2):224-235. 2001.

97. **Improved production of nursery stock of *Taxus baccata* L. through management of the arbuscular mycorrhizal symbiosis.** Sainz, M. J.; Iglesias, L.; Vilarino, A.; Pintos, C.; Mansilla, J. P. *Acta Horticulturae* 536:379-384. 2000.

98. © **Influence of two plant growth-promoting rhizobacteria on loblolly pine root respiration and IAA activity.** Vonderwell, J. D.; Enebak, S. A.; Samuelson, L. J. *Forest Science* 47(2):197-202. 2001.

99. © **Laboratory experiments imply the conditionality of mycorrhizal benefits for *Salix repens*: role of pH and nitrogen to phosphorus ratios.** Van der Heijden, E. W.; Kuyper, T. W. *Plant and Soil* 228(2):275-290. 2001.

100. © **Longevity of mycorrhizal roots depends on branching order and nutrient availability.** Majdi, H.; Damm, E.; Nylund, J. E. *New Phytologist* 150(1):195-202. 2001.

101. © **Mycelium of arbuscular mycorrhizal fungi (AMF) from different genera: form, function and detection.** Dodd, J. C.; Boddington, C. L.; Rodriguez, A.; Gonzalez-Chavez, C.; Mansur, I. *Plant and Soil* 226 (2):131-151. 2000.

102. © **Nutrient economy of red pine is affected by interactions between *Pisolithus tinctorius* and other forest-floor microbes.** Koide, R. T.; Kabir, Z. *New Phytologist* 150(1):179-188. 2001.

103. © **The potential for woody understory plants to provide refuge for ectomycorrhizal inoculum at an interior Douglas-fir forest after clear-cut logging.** Hagerman, S. M.; Sakakibara, S. M.; Durall, D. M. *Canadian Journal of Forest Research* 31(4):711-721. 2001.



Nursery Structures & Equipment

104. **The basics of shading for proper temperature control.** Bartok, J. W., Jr. *Greenhouse Management and Production* 21(5):72-73. 2001.

105. **Beyond temperature control.** Flood, D. *Greenhouse Management and Production* 21(3):24-26, 28. 2001. How can you maintain a stable climate in a greenhouse against the dynamics of everyday weather?

106. **Building a new greenhouse?** Bartok, J. W., Jr. *Greenhouse Management and Production* 21(4):74, 76, 77. 2001. Lists things to consider before signing a contract with a builder.

107. **Don't let lightning zap you.** Woolsey, J. *Greenhouse Management and Production* 20(11):46-51. 2000. Increased use of computers and microprocessor-based devices in greenhouses has made them vulnerable to lightning strikes.

108. **The glazing puzzle.** *Greenhouse Management and Production* 21(4):50-52. 2001. Different light properties impact how plants grow in a greenhouse. Learn how to fit the pieces together to maximize these properties, control growth and prevent disease.

109. **Greenhouse structures and coverings.** McKay, A. *Greenhouse Management and Production* 21(4):42-44, 46, 49. 2001.

110. **How to control energy costs.** Short, T. H. *Greenhouse Management and Production* 21(4):18-20, 22-23. 2001.

111. **Inspect new construction.** Bartok, J. W., Jr. *Greenhouse Management and Production* 21(6):68-69.

2001. Inspect your new greenhouse while it is being built to ensure that the plans, specifications and contract are being followed.

112. **Maintenance: a necessary part of mechanization.** Bartok, J. W., Jr. *Greenhouse Management and Production* 20(11):80-81. 2000.

113. **What to know before building a greenhouse.** McKay, A. *Greenhouse Management and Production* 21 (6):28-30. 2001. Site selection, water supply, availability of utilities, and required permits must be considered before construction begins.



Outplanting Performance

114. © **Acclimation to light in planted and naturally regenerated populations of white spruce seedlings.** Awada, T.; Redmann, R. E. *Canadian Journal of Botany* 78(12):1495-1504. 2000.

115. **An approach to the development of standardized measures for forest regeneration success in Australia.** Van Der Meer, P. J.; Dignan, P. IN: *International conference on indicators for sustainable forest management*, p. 171-172. Held August 24-28, 1998, Melbourne, Australia. 1998.

116. © **Cluster afforestation for creating diverse mountain forest structures - a review.** Schonenberger, W. *Forest Ecology and Management* 145(1-2):121-128. 2001.

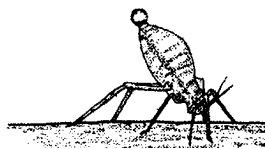
117. **A comparative study of plant vitality tests and field performance of eleven tree species.** Radoglou, K.; Raftoyannis, Y. *Phyton* 40(4):163-168. 2000.

118. © **Determining the pattern of oak woodland regeneration for a cleared watershed in northwest California: a necessary first step for restoration.** Brooks, C. N.; Merenlender, A. M. *Restoration Ecology* 9(1):1-12. 2001.

119. © **Effects of a willow overstory on planted seedlings in a bottomland restoration.** Dulohery, C. J.; Kolka, R. K.; McKevlin, M. R. *Ecological Engineering* 15(Suppl):S57-S66. 2000.

120. **Effects of desiccation and freezing on vitality and field performance of broadleaved tree species.** Radoglou, K.; Raftoyannis, Y. *Annals of Forest Science* 58(1):59-68. 2001.
121. © **Effects of reforestation techniques on the nutrient content, photosynthetic rate and stomata) conductance of *Pinus halepensis* seedlings under semiarid conditions.** Diaz, E.; Roldan, A. *Land Degradation and Development* 11(5):475-486. 2000.
122. © **Establishing white spruce in the boreal white and black spruce zone.** Site preparation trials at Wonowon and Iron creek, British Columbia. Bedford, L.; Sutton, R. F.; Stordeur, L.; Grismer, M. *New Forests* 20(3):213-233. 2000.
123. © **Evaluation of an attempt to cultivate shrubs and trees on a heap of a potash mine.** Kahl, L.; Kluge, R.; Thomas, S. *Landscape and Urban Planning* 51(2-4):109-112. 2000.
124. © **Frost damage to planted Norway spruce seedlings -- influence of site preparation and seedling type.** Langvall, O.; Nilsson, U.; Orlander, G. *Forest Ecology and Management* 141(3):223-235. 2001.
125. © **Germination and survival of tree species in disturbed forests of the highlands of Chiapas, Mexico.** Camacho-Cruz, A.; Gonzalez-Espinosa, M.; Wolf, J. H. D.; De Jong, B. H. J. *Canadian Journal of Botany* 78(10):1309-1318. 2000.
126. **The growth of Scots pine (*Pinus sylvestris*) and Norway spruce (*Picea abies*) seedlings on hydrologically and nutritionally contrasting till soils in Finnish Lapland.** Sutinen, M. L.; Salmela, S.; Sutinen, R.; Vapaavuori, E. *Phyton* 40(4):175-178. 2000.
127. © **Models of low temperature and high irradiance and their application to explaining the risk of seedling mortality.** Blennow, K.; Lindkvist, L. *Forest Ecology and Management* 135(1-3):289-301. 2000.
128. © **Morphological and physiological attributes of root systems and seedling growth in three different *Picea glauca* reforestation stock.** Krasowski, M. J.; Owens, J. N. *Canadian Journal of Forest Research* 30 (11):1669-1681. 2000.
129. © **Operational restoration of the Pen Branch bottomland hardwood and swamp wetlands - the research setting.** Nelson, E. A.; Duloher, N. C.; Kolka, R. K.; McKee, W. H., Jr. *Ecological Engineering* 15(Suppl):S23-S33. 2000.
130. © **The physiological basis for the establishment of bare-root larch seedlings.** McKay, H. M.; Morgan, J. L. *Forest Ecology and Management* 142(1-3):1-18. 2001.
131. © **Restoring bottomland hardwood ecosystems in the lower Mississippi alluvial valley.** Stanturf, J. A.; Gardiner, E. S.; Hamel, P. B.; Devall, M. S.; Leininger, T. D.; Warren, M. E., Jr. *Journal of Forestry* 98(8):10-16. 2000.
132. © **Seedling emergence of *Pinus sylvestris* in characterized seedbed substrates under different moisture conditions.** Oleskog, G.; Grip, H.; Bergsten, U.; Sahlen, K. *Canadian Journal of Forest Research* 30 (1 1):1766-1777. 2000.
133. © **Survival and early development of lodgepole pine.** Varmola, M.; Salminen, H.; Rikala, R.; Kerkela, M. *Scandinavian Journal of Forest Research* 15(4):410-423. 2000.
134. © **Survival and growth of black and white spruce seedlings in relation to stock type, site preparation and plantation type in southeastern Manitoba.** Wang, G. G.; Siemens, J. A.; Keenan, V.; Phillipot, D. *Forestry Chronicle* 76(5):775-782. 2000.
135. © **Ten-year growth and survival of Douglas-fir seedlings treated with plant growth regulating substances at transplant.** Scagel, C. F.; Linderman, R. G.; Scagel, R. K. *Canadian Journal of Forest Research* 30(11):1778-1787. 2000.
136. © **The use of natural processes in reclamation advantages and difficulties.** Bradshaw, A. *Landscape and Urban Planning* 51(2-4):89-100. 2000.
137. © **The use of tree shelters in restoring forest species to a floodplain delta: 5-year results.** Conner, W. H.; Inabinette, L. W.; Brantley, E. F. *Ecological Engineering* 15(Suppl):S47-S56. 2000.
138. **Water relations root growth potential and plant survival of cold stored *Pinus radiata* D. Don seedlings.** Mena-Petite, A.; Omega-Lasuen, U.; Gonzalez-Moro, B.; Lacuesta, M.; Munoz-Rueda, A. *Phyton* 40(4):143-148. 2000.

Pest Management



139. **Addition of beneficial microorganisms to growth media: an overview.** Borregaard, S. International Plant Propagators' Society, combined proceedings 1999, 49:426-429. 2000.

140. **The basics of biorationals.** Brownbridge, M. Greenhouse Grower 19(2):22, 24, 26, 30, 32, 34. 2001. Explores the use of different types of biorational pesticides, a group that pose minimal risk to the environment due to their chemical make-up, rapid degradation, or the small amount required to effect control.

141. © **Biocontrol of cucumber diseases in the field by plant growth-promoting rhizobacteria with and without methyl bromide fumigation.** Raupach, G. S.; Kloepper, J. W. Plant Disease 84(10):1073-1075. 2000.

142. **Biocontrols for disease are here to stay.** Nameth, S. T. Greenhouse Management and Production 21(2):6467. 2001.

143. **Biological fungicides: why these products are becoming more common.** Hattori, K. Nursery Management and Production 16(11):55-58. 2000.

144. **Biological remediation of damping off on conifer seedlings at Meadow Lake Nursery Company.** Armstrong, M. International Plant Propagators' Society, combined proceedings 1999, 49:259-262. 2000. Seeds were treated with Zeritol, which is formed by the fusion of hydrogen dioxide with peroxyacetic acid.

145. **Cleanliness in propagation with the use of Agribrom.** Klupenger, D. International Plant Propagators' Society, combined proceedings 1999, 49:602-603. 2000.

146. **Control of Botrytis during plant propagation.** Mahaffee, W. International Plant Propagators' Society, combined proceedings 1999, 49:543-551. 2000.

147. **Dealing with disease in high humidity environments: strategies for control in fog and mist zones.** Spreittler, R. K. International Plant Propagators' Society, combined proceedings 1999, 49:608-613. 2000.

148. **Diagnosis and management of bacterial diseases.** Wick, R. L. Greenhouse Management and Production 21 (2):28-30, 32. 2001. Bacterial cause a variety of symptoms that can be similar to those

caused by fungi, so find out which distinct features you should look for.

149. © **Disease progression by active mycelial growth and biocontrol of *Pythium ultimum* var. *ultimum* studied using a rhizobox system.** Green, H.; Jensen, D. F. Phytopathology 90(9):1049-1055. 2000.

150. **Diseases associated with whitebark pine seedling production, USDA Forest Service Nursery, Coeur d'Alene, Idaho.** James, R. L.; Burr, K. E. USDA Forest Service, Northern Region, Forest Health Protection, Report 00-8. 11 p. 2000.

151. **Effect of soil solarization and cover crops on populations of selected soilborne plant pathogens in western Oregon.** Pinkerton, J. N.; Ivors, K. L.; Miller, M. L.; Moore, L. W. Plant Disease 84(9):952-960. 2000.

152. © **Effect of *Trichoderma* fungi on soil micromycetes that cause infectious conifer seedling lodging in Siberian tree nurseries.** Yakimenko, E. E.; Grodnitskaya, I. D. Microbiologia 69(6):726-729. 2000.

153. **Effects of a 2-year fallow period on soil populations of *Fusarium*, *Trichoderma* and *Pythium* species after incorporating corn plant residues -USDA Forest Service Nursery, Coeur d'Alene, Idaho.** James, R. L. USDA Forest Service, Northern Region, Forest Health Protection, Report 00-17. 11 p. 2000.

154. **Effects of bare fallowing on *Fusarium*-associated root diseases and production of bare root ponderosa pine seedlings at the USDA Forest Service Lucky Peak Nursery, Boise, Idaho.** James, R. L.; Beall, K. USDA Forest Service, Northern Region, Forest Health Protection, Report 00-3. 13 p. 2000.

155. **Effects of topical application of the biological control agent Biotrek on production of bareroot Douglas-fir and western white pine seedlings, USDA Forest Service nursery, Coeur d'Alene, Idaho.** James, R. L. USDA Forest Service, Northern Region, Forest Health Protection Report 00-5. 8 p. 2000.

156. **Evaluation of methyl iodide for control of peach replant disorder.** Eayre, C. G.; Sims, J. J.; Ohr, H. D.; Mackey, B. Plant Disease 84(10):1177-1179. 2000.

157. © **Fungicidal control of *Lophodermium seditiosum* on *Pinus sylvestris* seedlings in Swedish forest nurseries.**

Stenstrom, E.; Arvidsson, B. Scandinavian Journal of Forest Research 16(2):147-154. 2001.

158. © **Genetic analysis of isolates of *Botrytis cinerea* sensitive and resistant to benzimidazole and dicarboximide fungicides.**

Yourman, L. F.; Jeffers, S. N.; Dean, R. A. Phytopathology 90(8):851-859. 2000.

159. **How to decrease pest control costs.** McCaffrey, B. T. Nursery Management and Production 17(5):62-67. 2001. Save big bucks through sanitation, pest identification and crop rotation. Life cycles and control techniques for aphids, thrips, whiteflies, scale, and spider mites are discussed.

160. © **Impact of *Leptoglossus occidentalis* (Hemiptera: Coreidae) on Douglas-fir seed production.** Bates, S. L.; Borden, J. H.; Kermode, A. R.; Bennett, R. G. Journal of Economic Entomology 93 (5):1444-1451. 2000.

161. **Integrated plant disease control.** Labuschagne, N. International Plant Propagators' Society, combined proceedings 1999, 49:68-71. 2000.

162. **Investigations of tree health at the Potlatch Corporation Cherrylane Seed Orchard, Idaho.** James, R. L. USDA Forest Service, Northern Region, Forest Health Protection, Report 00-14. 15 p. 2000.

163. **Moving to biocontrols.** Henderson, J. Nursery Management and Production 17(3):31-32, 34-37. 2001. Learning to combine traditional and biological techniques is the key.

164. **Pathogenic characteristics of *Fusarium acuminatum* isolated from inland Pacific Northwest nurseries.** James, R. L. USDA Forest Service, Northern Region, Forest Health Protection, Report 00-16. 8 p. 2000.

165. **Pathogenic characteristics of *Fusarium solani* isolated from inland Pacific Northwest forest nurseries.** James, R. L.; Perez, R. USDA Forest Service, Northern Region, Forest Health Protection, Report 00-15. 12 p. 2000.

166. **Propagation pest control.** Miller, F. Nursery Management and Production 16(12):32-34, 36-37. 2000. Use sanitation to stay ahead of shoreflies and fungus gnats.

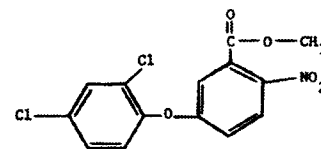
167. **Root diseases of bareroot western larch seedlings - USDA Forest Service Nursery, Coeur d'Alene, Idaho.** James, R. L. USDA Forest Service, Northern Region, Nursery Disease Notes No. 141. 10 p. 2000.

168. © **Selective media for the specific isolation and enumeration of *Botrytis cinerea* conidia.** Edwards, S. G.; Seddon, B. Letters in Applied Microbiology 32 (2):63-66. 2001.

169. **Technology provides state-of-the-art disease diagnosis.** Nameth, S. T. Greenhouse Management and Production 21(6):64, 66-67. 2001. New technologies for plant disease diagnosis include cyber-diagnosis, DNA-based technology, and immuno-diagnostics.

170. © **Water stress and *Sphaeropsis sapinea* as a latent pathogen of red pine seedlings.** Stanosz, G. R.; Blodgett, J. T.; Smith, D. R.; Kruger, E. L. New Phytologist 149(3):531-538. 2001.

171. © **What's a picture worth? The use of modern telecommunications in diagnosing plant diseases.** Holmes, G. J.; Brown, EA.; Ruhl, G. Plant Disease 84 (12):1256-1265. 2000.



Pesticides

172. **As EPA cracks down on chemicals, scouting becomes more critical for nurseries.** Walker, B. The Digger 45(3):39-46. 2001. Biologicals become bigger part of pest programs, but timing is critical.

173. **Common and chemical names of herbicides approved by the Weed Science Society of America.** Weed Science 48(6):786-792. 2000.

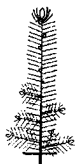
174. **Effect of water pH on pest control materials.** Cloyd, R. Greenhouse Management and Production 20 (11):78-79. 2000. Water pH can negatively impact effectiveness of many pest control materials.

Seedling Harvesting and Storage



175. © Effect of different lifting dates and different lengths of cold storage on plant vitality of silver birch and common oak. Lindqvist, H. *Scientia Horticulturae* 88(2):147-161. 2001.

Seedling Physiology and Morphology



176. © Assessment of root freezing damage of two-year-old white spruce, black spruce and jack pine seedlings. Coursolle, C.; Bigras, F. J.; Margolis, H. A. *Scandinavian Journal of Forest Research* 15(3):343-353. 2000.

177. Chlorophyll fluorescence as a tool in propagation. Bruce, S. E.; Rowe, B. *International Plant Propagators' Society, combined proceedings 1999*, 49:276-280. 2000.

178. Chlorophyll fluorescence characteristics, performance and survival of freshly lifted and cold stored Douglas fir seedlings. Perks, M. P.; Monaghan, S.; O'Reilly, C.; Osborne, B. A.; Mitchell, D. T. *Annals of Forest Science* 58(3):225-235. 2001.

179. © Cold-induced photoinhibition affects establishment of *Eucalyptus nitens* (Deane and Maiden) Maiden and *Eucalyptus globulus* Labill. Close, D. C.; Beadle, C. L.; Brown, P. H.; Holz, G. K. *Trees: Structure and Function* 15(1):32-41. 2000.

180. © Ecophysiological responses of *Araucaria angustifolia* (Araucariaceae) seedlings to different irradiance levels. Duarte, L. da S.; Dillenburg, L. R. *Australian Journal of Botany* 48(4):531-537. 2000.

181. Effect of accumulated duration of the light period on bud burst in Norway spruce (*Picea abies*) of varying ages. Partanen, J.; Leinonen, L.; Repo, T. *Silva Fennica* 35(1):111-117. 2001.

182. © Effects of drought preconditioning on thermotolerance of photosystem II and susceptibility of photosynthesis to heat stress in cedar seedlings. Ladjal, M.; Epron, D.; Ducrey, M. *Tree Physiology* 20 (18):1235-1241. 2000.

183. © Effects of flood pre-conditioning on responses of three bottomland tree species to soil waterlogging. Anderson, P. H.; Pezeshki, S. R. *Journal of Plant Physiology* 158(2):227-233. 2001.

184. © Effects of light regimes on the growth of cherrybark oak seedlings. Guo, Y.; Shelton, M. G.; Lockhart, B. R. *Forest Science* 47(2):270-277. 2001.

185. © Effects of soil temperature on biomass and carbohydrate allocation in Scots pine (*Pinus sylvestris*) seedlings at the beginning of the growing season. Domisch, T.; Finer, L.; Lehto, T. *Tree Physiology* 21 (7):465-472. 2001.

186. The effects of submergence and light on two age classes of baldcypress (*Taxodium distichum* (L.) Richard) seedlings. Souther, R. F.; Shaffer, G. P. *Wetlands* 20(4):697-706. 2000.

187. © Effects of thawing procedure on frost hardiness, carbohydrate content and timing of bud break in *Picea abies*. Floistad, I. S.; Kohmann, K. *Scandinavian Journal of Forest Research* 16(1):30-36. 2001.

188. © Floret's use expands to more crops. Konjoian, P. *Greenhouse Management and Production* 21(3):45-48, 50. 2001. The growth regulator Floret has an expanded label for floriculture crops. Learn how this ethylene-producing chemical affects plant growth and how it can be used on stock and finished plants.

189. © Growth cessation and autumn-frost hardiness in one-year-old *Picea abies* progenies from seed orchards and natural stands. Hannerz, M.; Westin, J. *Scandinavian Journal of Forest Research* 15(3):309-317. 2000.

190. © Growth response of mountain birch to air and soil temperature: is increasing leaf-nitrogen content an acclimation to lower air temperature? Weih, M.; Karlsson, P. S. *New Phytologist* 150(1):147-155. 2001.

191. © Morphological and physiological reactions of young deciduous trees (*Quercus robur* L., *Q. petraea* [Matt. Liebl., *Fagus sylvatica* L.) to waterlogging. Schnull, M.; Thomas, F. M. *Plant and Soil* 225(1-2):227-242. 2000.

192. © **Phenotypic differences between natural and selected populations of *Picea abies*. I. Frost hardiness.** Westin, J.; Sundblad, L. G.; Strand, M.; Hallgren, J. E. *Scandinavian Journal of Forest Research* 15(5):489-499. 2000.

193. © **Photosynthesis and carbon allocation of six boreal tree species grown in understory and open conditions.** Landhausser, S. M.; Lieffers, V. J. *Tree Physiology* 21(4):243-250. 2001.

194. © **The phytochromes, a family of red/far-red absorbing photoreceptors.** Fankhauser, C. *Journal of Biological Chemistry* 276(15):11453-11456. 2001.

195. © **The relation between growth cessation and frost hardening in Scots pines of different origins.** Repo, T.; Zhang, G.; Ryyppo, A.; Rikala, R.; Vuorinen, M. *Trees: Structure and Function* 14(8):456-464. 2000.

196. © **Relationship between carbohydrate concentration and root growth potential in coniferous seedlings from three climates during cold hardening and dehardening.** Tinus, R. W.; Burr, K. E.; Atzmon, N.; Riov, J. *Tree Physiology* 20(16):1097-1104. 2000.

197. © **Responses of xylem cavitation, freezing injury and shoot dieback to a simulated winter thaw in yellow birch seedlings growing in different nursery culture regimes.** Zhu, X. B.; Cox, R. M.; Meng, F. R.; Arp, P. A. *Forest Ecology and Management* 145(3):243-253. 2001.

198. © **Seasonal changes in phenological traits and cold hardiness of FI-populations from plus-trees of *Pinus sylvestris* and *Pinus contorta* of various geographic origins.** Nilsson, J. E. *Scandinavian Journal of Forest Research* 16(1):7-20. 2001.

199. © **Seed treatment with the antioxidant Abiol enhances membrane protection in seedlings exposed to drought and low temperatures.** Borsos-Matovina, V.; Blake, T. J. *Trees: Structure and Function* 15(3):163-167. 2001.

200. © **Selection of white spruce families in the context of climate change: heat tolerance.** Bigras, F. J. *Tree Physiology* 20(18):1227-1234. 2000.

201. © **Water stress responses of seedlings of four Mediterranean oak species.** Fotelli, M. N.; Radoglou, K. M.; Constantinidou, H. I. A. *Tree Physiology* 20(16):1065-1075. 2000.



202. © **Aging in *Pinus sylvestris* L. seeds: changes in viability and lipids.** Tammela, P.; Hopia, A.; Hiltunen, R.; Vuorela, H.; Nygren, M. *Biochemical Society Transactions* 28(6):878-882. 2000.

203. © **Comparative effects of different smoke treatments on germination of Australian native plants.** Lloyd, M. V.; Dixon, K. W.; Sivasithamparam, K. *Austral Ecology* 25(6):610-611. 2000.

204. **Destiny of tree seeds during germination under stress.** Jensen, M.; Westergaard, L. *International Plant Propagators' Society, combined proceedings 1999*, 49:442-445. 2000.

205. **Ecophysiology of seed germination in *Pinus halepensis* and *P. brutia*.** Thanos, C. A. IN: *Ecology, biogeography and management of Pinus halepensis and P. brutia forest ecosystems in the Mediterranean Basin*, p. 37-50. Ne'eman, G. and L. Trabaud, eds. Backhuys Publishers. 2000.

206. **Effect of alternate chilling/heating on germination of fresh teak (*Tectona grandis* L.f.) drupes, without scarification of felty mesocarp.** Rajput, A.; Tiwari, K. P. *Seed Science and Technology* 29(1):57-64. 2001.

207. © **Effect of feeding by the western conifer seed bug, *Leptoglossus occidentalis*, on the major storage reserves of developing seeds and on seedling vigor of Douglas-fir.** Bates, S. L.; Lait, C. G.; Borden, J. H.; Kermod, A. R. *Tree Physiology* 21(7):481-487. 2001.

208. © **The effects of desiccation on seeds of *Acer saccharinum* and *Aesculus pavia*: recalcitrance in temperate tree seeds.** Connor, K. F.; Bonner, F. T. *Trees: Structure and Function* 15(3):131-136. 2001.

209. © **Effects of smoke, heat and charred wood on the germination of dormant soil-stored seeds from a *Eucalyptus baxteri* heathy-woodland in Victoria, SE Australia.** Enright, N. J.; Kintrop, A. *Austral Ecology* 26(2):132-141. 2001.

210. **Fumarase activity as a quick vigour test for Scots pine (*Pinus sylvestris* L.) seeds.** Shen, T. Y.; Oden, P. C. *Seed Science and Technology* 28(3):825-835. 2000.

211. © **Genotype x environment interactions in *Alnus rubra*: developing seed zones and seed-transfer guidelines with spatial statistics and GIS.** Hamann, A.; Koshy, M. P.; Namkoong, G.; Ying, C. C. *Forest Ecology and Management* 136(1-3):107-119. 2000.

212. **Germination and growth of *Acer* species.** Krautmann, M. E. International Plant Propagators' Society, combined proceedings 1999, 49:595-598. 2000.

213. © **Germination ecology in mountain hemlock (*Tsuga mertensiana* (Bong.) Carr.).** El-Kassaby, Y. A.; Edwards, D. G. W. *Forest Ecology and Management* 144(1-3):183-188. 2001.

214. © **An increase in pectin methyl esterase activity accompanies dormancy breakage and germination of yellow cedar seeds.** Ren, C.; Kermode, A. R. *Plant Physiology* 124(1):231-242. 2000.

215. **Preparing, patience, and persistence in seed.** Hatch, L. International Plant Propagators' Society, combined proceedings 1999, 49:111-113. 2000.

216. **Presowing treatment of seeds with hydrogen peroxide promotes germination and development of plants.** Narimanov, A. A. *Biologia (Bratislava)* SS (4):425-428. 2000.

217. © **The relationship between the mitotic activity and moisture content of recalcitrant seeds of *Acer saccharinum* (L.) during maturation, post-maturation drying and germination.** Kozeko, L. E.; Troyan, V. M. *Seed Science Research* 10(3):225-232. 2000.

218. **Seed crops and seed crop forecasts for a number of tree species.** Hokkanen, T. IN: *Forest regeneration in the northern parts of Europe*, p. 87-97. Finnish Forest Research Institute, Research Papers 790. 2000.

219. © **Seed dormancy in red rice (*Oryza saliva*). XI. Commercial liquid smoke elicits germination.** Doherty, L. C.; Cohn, M. A. *Seed Science Research* 10 (4):415-421. 2000.

220. © **Seed production in woodland and isolated trees of *Eucalyptus melliodora* (yellow box, Myrtaceae) in the south western slopes of New South Wales.** Burrows, G. E. *Australian Journal of Botany* 48 (6):681-685. 2000.

221. © **Storage behavior of *Salix alba* and *Salix matsudana* seeds.** Maroder, H. L.; Prego, I. A.; Facciuto, G. R.; Maldonado, S. B. *Annals of Botany* 86 (5):1017-1021. 2000.

222. © **Susceptibility of cones and seeds to fungal infection in a pine (*Pinus spp.*) collection.** Vujanovic, V.; St-Arnaud, M.; Neumann, P.-J. *Forest Pathology* 30 (6):305-320. 2000.

Soil Management & Growing Media



223. © **Allelopathic bacteria and their impact on higher plants.** Barazani, O.; Friedman, J. *Critical Reviews in Microbiology* 27(1):41-55. 2001.

224. **Allelopathic interactions in soil.** Lalljee, B.; Facknath, S. IN: *Allelopathy in ecological agriculture and forestry*, p. 47-58. Kluwer Academic Publishers. 2000.

225. **Coconut-coir-based media versus peat-based media for propagation of woody ornamentals.** Stoven, J.; Kooima, H. International Plant Propagators' Society, combined proceedings 1999, 49:373-374. 2000.

226. **Earthworm-processed organic wastes as components of horticultural potting media for growing marigold and vegetable seedlings.** Atiyeh, R. M.; Edwards, C. A.; Subler, S.; Metzger, J. D. *Compost Science and Utilization* 8(3):215-223. 2000.

227. **Experience with steam-treated peat.** Kahr, B. International Plant Propagators' Society, combined proceedings 1999, 49:422-423. 2000.

228. **Field B demonstration comparison of grass cover crop, bare fallow, and Dazomet fumigation at J. Herbert Stone Nursery 1997-1999.** Hildebrand, D. M.; Stone, J. K. USDA Forest Service, Pacific Northwest Region, FID Technical Report R6-O1-01. 20 p. 2001. Available at www.fs.fed.us/r6/nr/fid (Click on Publications).

229. **Growing mix component effects.** Jacques, D.; Toops, A. *Greenhouse Management and Production* 21 (1):59-62, 64. 2001. Find out the impact of growing medium components on plant growth when they are incorporated into a mix.

230. **Putting compost into the mix.** Miller, V. M. *The Digger* 45(5):33-35. 2001. The nursery industry must define its composting needs so that commercial composters can rise to the challenge.

231. **The role of compost in Oregon nurseries.** Miller, M. The Digger 45(5):36-39, 41. 2001. Interest is high in the organic matter as a soil mix and research continues to improve the final product.

232. © **Soil solution and other soil analyses as indicators of nutrient supply: a review.** Smethurst, P. J. Forest Ecology and Management 138(1-3):397-411 2000.

233. **Spent mushroom substrate as a soil amendment for ornamental plants.** Heuser, C. W.; Holcomb, E. J.; Young, J. International Plant Propagators' Society, combined proceedings 1999, 49:369-372. 2000.

234. **Sustained productivity in intensively managed forest plantations.** Fox, T. R. Forest Ecology and Management 138(1-3):187-202. 2000.

235. **Understanding media - pH management. Part 1: Problems associated with media - pH and solutions for improved pH management.** Argo, B.; Fisher, P. Greenhouse Grower 18(13):42-44, 46, 50, 51. 2000.

236. **Understanding media - pH management. Part 2: Root media and limestone.** Argo, B.; Fisher, P. Greenhouse Grower 18(14):24-26, 29-30. 2000.

237. **Understanding media - pH management. Part 3: Irrigation water alkalinity and its effects on media -pH management.** Argo, B.; Smith, B.; Fisher, P. Greenhouse Grower 19(1):72, 74-76, 78, 80, 82. 2001.

238. **Understanding media - pH management. Part 4: Water-soluble fertilizers and how they play an active role in media - pH management.** Argo, B.; Fisher, P. Greenhouse Grower 19(2):62, 64-66, 68, 70, 72. 2001.

239. **Understanding media - pH management. Part 5: Water soluble fertilizer choices.** Argo, B.; Fisher, P. Greenhouse Grower 19(3):58, 60-62, 64-66. 2001.

240. © **Use of soil solarization to improve growth of eucalyptus forest nursery seedlings in Argentina.** Salerno, M. L.; Lori, G. A.; Gimenez, D. O.; Gimenez, J. E.; Beltrano, J. New Forests 20(3):235-248. 2000.

Rica. Leopold, A. C.; Andrus, R.; Finkeldey, A.; Knowles, D. Forest Ecology and Management 142 (1-3):243-249. 2001.

242. **Bio-economic indicators of enhanced forest nursery and tree plantation establishment operations.** Nasayao, E. E.; Germano, E. M.; Barillo, M. E.; Lumacad, A. M. 1N: International conference on indicators for sustainable forest management, p. 133-134. Held August 24-28, 1998, Melbourne, Australia. 1998.

243. **Desiccation tolerance and storage behavior of neem (*Azadirachta indica* A. Juss.) seeds.** Nayal, J. S.; Thapliyal, R. C.; Rawat, M. M. S.; Phariyal, S. S. Seed Science and Technology 28(3):761-767. 2000.

244. **Effect of seed moisture and drying methods on seed quality of neem (*Azadirachta indica*, A. Juss.).** Karivaradaraju, T. V.; Bharathi, A.; Umarani, R. IN: *Azadirachta indica* A. Juss, p. 277-283. Singly R.P. and R.C. Saxena, eds. Science Publishers Inc. USA. 1999.

245. **The effects of management regime and host species on sandalwood (*Santalum spicatum*) recruitment near Paynes Find, western Australia.** Brand, J. E. Rangeland Journal 22(2):243-255. 2000.

246. © **The effects of mycofloral infection on the viability and ultrastructure of west-stored recalcitrant seeds of *Avicennia mariana* (Forssk.) Vierh.** Calistru, C.; McLean, M.; Pammenter, N. W.; Berjak, P. Seed Science Research 10(3):341-353. 2000.

247. © **Evaluation of 15 indigenous and introduced species for reforestation and agroforestry in northeastern Mexico.** Foroughbakhch, R.; Hauad, L. A.; Cespedes, A. E.; Ponce, E. E.; Gonzalez, N. Agroforestry Systems 51(3):213-221. 2001.

248. **Genetic differentiation of intrinsic water-use efficiency in the Hawaiian native *Acacia koa*.** Ares, A.; Fownes, J. H.; Sun, W. International Journal of Plant Science 161(6):909-915.2000.

249. © **Influence of seed size on seedling growth of *Albizia procera* under different soil water levels.** Khurana, E.; Singly J. S. Annals of Botany 86(6):1185-1192. 2000.

250. **Neem for reforestation.** Maramorosch, K. 1N: *Azadirachta indica* A. Juss, p. 11-20. Singly R.P. and R. C. Saxena, eds. Science Publishers Inc. USA. 1999.

Tropical Forestry & Agroforestry



241. © **Attempting restoration of wet tropical forests in Costa**

251. **Nutrient and carbon dynamics in a replacement series of Eucalyptus and Albizia trees.** Kaye, J. P.; Resh, S. C.; Kaye, M. W.; Chimner, R. A. *Ecology* 81 (12):3267-3273. 2000.

252. © **Optimizing seedling management: *Pouteria sapota*, *Diospyros digyna*, and *Cedrela odorata* in a Mexican rainforest.** Ricker, M.; Siebe, C.; Sanchez B. S.; Shimada, K.; Larson, B. C.; Martinez-Ramos, M.; Montagnini, F. *Forest Ecology and Management* 139(1-3):63-77. 2000.

253. © **The potential for carbon sequestration through reforestation of abandoned tropical agricultural and pasture lands.** Silver, W. L.; Ostertag, R.; Lugo, A. E. *Restoration Ecology* 8(4):394-407. 2000.

254. © **Symbiotic specificity of tropical tree rhizobia for host legumes.** Bala, A.; Giller, K. E. *New Phytologist* 149(3):495-507. 2001.



Vegetative Propagation and Tissue Culture

255. **Artificial seed technology application in propagation of forest trees.** Ishii, K.; Maruyama, E.; Kinoshita, I. *International Plant Propagators' Society, combined proceedings 1999*, 49:647. 2000.

256. © **Effects of IBA and NAA treatments on rooting Douglas-fir stem cuttings.** Copes, D. L.; Mandel, N. L. *New Forests* 20(3):249-257. 2000.

257. **Forcing environment affects epicormic sprout production from branch segments for vegetative propagation of adult hardwoods.** Van Sambeek, J. W.; Preece, J. E. *International Plant Propagators' Society, combined proceedings 1999*, 49:399-401. 2000.

258. © **Maturation, topophysis and other factors in relation to rooting in *Larix*.** Peer, K. R.; Greenwood, M. S. *Tree Physiology* 21(4):267-272. 2001.

259. **Micro-positional differences in cutting origin influence propagation of *Quercus rubra*.** Zaczek, J. J. *International Plant Propagators' Society, combined proceedings 1999*, 49:361-368. 2000.

260. © **The morphology and seasonal changes in cold hardiness, dormancy intensity and root growth potential of**

rooted cuttings of Sitka spruce. Fennessy, J.; O'Reilly, C.; Harper, C. P.; Thompson, D. *Forestry* 73(5):489-497. 2000.

261. © **Response to auxin changes during maturation-related loss of adventitious rooting competence in loblolly pine (*Pinus taeda*) stem cuttings.** Greenwood, M. S.; Cui, X.; Xu, F. *Physiologia Plantarum* 111(3):373-380. 2001.

262. **A review of the propagation of *Pinus radiata* by cuttings, with emphasis on juvenility.** Thomas, M. B.; Spurway, M. I. *International Plant Propagators' Society, combined proceedings 1999*, 49:103-106. 2000.

263. **The role of vegetative propagation in CSIRO Forestry and Forest Products.** Hartney, V. *International Plant Propagators' Society, combined proceedings 1999*, 49:139-144. 2000.

264. **Rooted cuttings for southern pines.** Stelzer, H.; Goldfarb, B. *International Plant Propagators' Society, combined proceedings 1999*, 49:506-509. 2000.

265. **Setting up a small-scale micropropagation lab.** Woodske, D. *International Plant Propagators' Society, combined proceedings 1999*, 49:598-601. 2000.

266. **A taxing taxon.** Bassuk, N. L. *American Nurseryman* 193(1):30-31. 2001. Oaks are difficult to propagate vegetatively, but one stooling method has achieved some success.

267. **The use of second generation cuttings to increase the rooting and quality of micropropagated elms.** McCown, D. D. *International Plant Propagators' Society, combined proceedings 1999*, 49:379-381. 2000.

268. **Using subirrigation to root stem cuttings: a project review.** Regan, R.; Henderson, A. *International Plant Propagators' Society, combined proceedings 1999*, 49:637-644. 2000.



Water Management

269. **Ability of restored wetlands to reduce nitrogen and phosphorus concentrations in agricultural drainage water.** Woltemade, C. J. *Journal of Soil and Water Conservation* 55(3):303-309. 2000.

270. **Are nutrient plans necessary?** Ross, D. S.; Lea-Cox, J. D.; Teffeu, K. M. *Nursery Management and Production* 17(4):35-36, 38, 40. 2001. These strategies can help your nursery with governmental compliance and help you save money. 271. Biological filtration shows promise for treating water. Berghage, R. *Greenhouse Management and Production* 21(4):68, 70, 71. 2001.

272. **Effect of water quality of plant propagation.** Mathers, H. International Plant Propagators' Society, combined proceedings 1999, 49:535-540. 2000.

273. **Erosion remedy.** Richards, D. *American Nurseryman* 193(3):24-26, 28-29. 2001. Growers can employ bioremediation strategies to help prevent soil erosion and water pollution.

274. **Fertilizer for subirrigation.** Pennisi, B. V.; Kang, J. G.; van Iersel, M. *Greenhouse Management and Production* 21(2):18-21. 2001.

275. **Flood floors: the hidden benefits.** Neumann, C. *Greenhouse Management and Production* 21(3):30-34. 2001.

276. © **Pilot plant for reclaimed wastewater reuse in nurseries.** Gori, R.; Lubello, C. *Water Science and Technology* 42(1-2):221-226. 2000.

277. **Recycling of water in a seedling nursery.** Kruger, M. International Plant Propagators' Society, combined proceedings 1999, 49:72-75. 2000.

278. **Subirrigation: irrigation with a twist.** Pennisi, B. V.; James, E. C.; Van Iersel, M. *Greenhouse Grower* 19 (3):22, 24, 26, 28. 2001.

281. **Adjuvants - terminology, classification, and chemistry.** Hazen, J. L. *Weed Technology* 14(4):773-784. 2000.

282. © **Assessment of the effect of broad-spectrum pre-emergence herbicides in poplar nurseries.** Sixto, H.; Grau, J. M.; Garcia-Baudin, J. M. *Crop Protection* 20(2):121-126. 2000.

283. **Corn gluten meal - a natural preemergence herbicide: effect on vegetable seedling survival and weed cover.** McDade, M. C.; Christians, N. E. *American Journal of Alternative Agriculture* 15(4):189-191. 2000.

284. **Extension perspective on grower confusion in adjuvant selection.** Zollinger, R. K. *Weed Technology* 14(4):814-818. 2000.

285. **The influence of elevated carbon dioxide and water availability on herbaceous weed development and growth of transplanted loblolly pine.** Gavazzi, M.; Seder, J.; Aust, W.; Zedaker, S. *Environmental and Experimental Botany* 44(3):185-194. 2000.

286. **Interaction of surfactants with plant cuticles.** Hess, F. D.; Foy, C. L. *Weed Technology* 14(4):807-813. 2000.

287. **Mother knows best: Meadowfoam seedmeal shows promise as an organic alternative to fertilizers, pesticides.** Stanley, H. *The Digger* 45(3):48-53. 2001. Meadowfoam seedmeal seems to suppress growth of liverworts.

288. **Physicochemical properties of adjuvants: values and applications.** Stock, D.; Briggs, G. *Weed Technology* 14(4):798-806. 2000.

289. **Using noxious weed lists to prioritize targets for developing weed management strategies.** Skinner, K.; Smith, L.; Rice, P. *Weed Science* 48:640-644. 2000. A database of noxious weed lists is available at < <http://invader.dbs.umt.edu> >

290. **Utility adjuvants.** McMullan, P. M. *Weed Technology* 14(4):792-797.2000.

291. **What makes a weed a weed?** Miller, L. International Plant Propagators' Society, combined proceedings 1999, 49:190-191. 2000. Features possessed by the ideal weed include high seed production, easily dispersed seed, long seed dormancy, rapid growth rates, climbing habit, vegetative reproduction, tolerance to chemicals, high ornamental value, and ability to repel predators or grazing animals.

Weed Control



279. **Activator adjuvants.** Penner, D. *Weed Technology* 14(4):785-791.2000.

280. **Adjuvant trends for the new millennium.** Underwood, A. K. *Weed Technology* 14(4):765-772. 2000.

