

Copies of the following journal articles or publications are free and can be ordered using the Literature Order Form. Just write in the appropriate number or letter on the form and return it to us. Note that there are three restrictions:

1. **Limit in the Number of Free Articles:** In an effort to reduce mailing costs, we are limiting the number of free articles that can be ordered through the FNN literature service. All subscribers will be restricted to 25 free articles per issue. If you still want additional articles, then you will have to order them on a fee basis from Donna Loucks, the librarian who maintains the FNN database. Just fill in the number of the fee articles on the bottom half of the order form, return it to us, and we will forward it to Donna..
2. **Copyrighted Material.** Items with © are copyrighted and require a fee for each copy, so only the title page and abstract will be provided through this service. If you want the entire article, then you can order a copy from a library service or from Donna.
3. **Special Orders (SO).** Special orders are books or other publications that, because of their size or cost, require special handling. For some, the Forest Service has procured copies for free distribution, but others will have to be purchased. Prices and ordering instructions are given following their listings in the New Nursery Literature section.

---

## Bareroot Production



1. **©Effects of leguminous ground cover competition on red birch and soil nutrient status in the nursery.** Hanninen, K.; Ohtonen, R.; Huttunen, S. *Plant and Soil* 216:129-138. 1999.

---

## Business Management



2. **Determining shipping labor costs.** Bartok, J. W., Jr. *Greenhouse Management and Production* 20(4):5354. 2000.

3. **Improve shipping efficiency.** Bartok, J. W., Jr. *Greenhouse Management and Production* 20(3):72-73. 2000.

4. **Levels of growing stock and economic returns.** Kerr, C. L. IN: *Stocking standards and reforestation methods for Alaska*, p.19-23. University of Alaska Fairbanks, Agricultural and Forestry Experiment Station, Misc. Publication 99-8. 1999. Lutz spruce killed by spruce bark beetle is being harvested in the Kenai Peninsula of Alaska, but returns are not sufficient to make artificial regeneration a prudent business decision.

- 5 **©The responses of worker effort to piece rates: evidence from the British Columbia tree-planting industry.** Paarsch, H. J.; Shearer, B. S. *Journal of Human Resources* 34(4):643-667. 1999.

## Container Production



6. **Accelerator containers alter plant growth and the root-zone environment.** Arnold, M. A.; McDonald, G. V. *Journal of Environmental Horticulture* 17(4):168-173. 1999.
7. ***Alternanthera nana* R. Br. nursery sowing-time influences *Santalum album* L. growth following field planting.** Radomiljac, A. M.; McComb, J. A. IN: Sandal and its products, p.50-53. Proceedings of a seminar held Dec. 18-19, 1997, Bangalore, India. Australian Centre for International Research. 1998. Use of *Alternanthera narra* as a pot-host increases field survival and growth.
8. **Cross-country containers.** Ruter, J. M. *American Nurseryman* 191(3):26-28, 30-31.2000. Copper treated fiber pots can withstand the rigors of shipping and provide a viable alternative to black plastic containers.
9. **Flood irrigation of container-grown *Euonymus* and *Thuja* as affected by fertilizer rate and substrate.** Lumis, G.; Purvis, P.; Taurins, L. *Journal of Environmental Horticulture* 18(1):13-17. 2000.
10. **Getting back to the roots.** Schlossberg, M. *American Nurseryman* 191(3):32-34, 36-37. 2000. A Florida nursery has developed a container system that emphasizes hardy, fibrous roots.
11. ©**Recirculation of nutrients in container nursery production.** Purvis, P.; Chong, C.; Lumis, G. P. *Canadian Journal of Plant Science* 80:39-45. 2000.

## Diverse Species



12. **Anatomy of two mechanisms of breaking physical dormancy by experimental treatments in seeds of two North American *Rhus* species (Anacardiaceae).** Li, X.; Baskin, J. M.; Baskin, C. C. *American Journal of Botany* 86(11): 1505-1511. 1999.
13. ©**Effects of nursery pre-conditioning on *Panicum hemitomon* and *Sagittaria lancifolia* used for wetland**

**restoration.** Pezeshki, S. R.; Anderson, P. H.; DeLaune, R. D. *Restoration Ecology* 8(1):57-64. 2000.

14. ©**Effects of resource-island soils, competition, and inoculation with *Azospirillum* on survival and growth of *Pachycereus pringlei*, the giant cactus of the Sonoran Desert.** Carrillo-Garcia, A.; Bashan, Y.; Rivera, E. D.; Bethlenfalvay, G. J. *Restoration Ecology* 8(1):65-73. 2000.
15. ©**Effects of salinity and temperature on seed germination in a Japanese endangered halophyte *Triglochin maritimum* (Juncaginaceae).** Masuda, M.; Maki, M.; Yahara, T. *Journal of Plant Research* 12:457-461. 1999.
16. **Germination ecology of a federally threatened endemic thistle, *Cirsium pitcleri*, of the Great Lakes.** Hamze, S.; Jolls, C. *American Midland Naturalist* 143 (1):141-153. 2000.
17. **Honey plant propagation by seed. Part I: Procurement and seed biology.** Ward, T.; Alexander, J.; Ayers, G. S. *American Bee Journal* Sept. 1999, p. 700-706. 1999. Raising plants for bees can be an interesting, rewarding, even exciting endeavor.
18. **Honey plant propagation by seed. Part II: The practical practice of propagating honey plants by seed.** Alexander, J.; Ward, T.; Ayers, G. S. *American Bee Journal* Nov. 1999, p. 857-865. 1999.
19. **Improved germination of American ginseng seeds under controlled environments.** Li, T. S. C.; Bedford, K. E.; Sholberg, P. L. *HortTechnology* 10(1):131-135. 2000.
20. **Industry inspection.** Davis, G. A.; Kitto, S. L.; Ilvento, T. L. *American Nurseryman* 191(4):111-112, 114-115. 2000. A survey of eastern North American native plant nurseries reveals problems with plant production and cultivation.
21. ©**Interdependence of *Myrica cerifera* seedlings and the nodule forming actinomycete, *Frankia*, in a coastal environment.** Wijnholds, A. E.; Young, D. R. *Journal of Coastal Research* 16(1):139-144.2000.
22. **Pericarp removal has little effect on sagebrush seeds.** Bai, Y.; Hardegree, S. P.; Booth, T.; Roos, E. E. *Journal of Range Management* 52:384-386. 1999.
23. ©**Regulation of the germination of *Rhus coriaria*, a post-fire pioneer, by heat, ash, pH, water potential and ethylene.** Ne'eman, G.; Henig-Sever, N.; Eshel, A. *Physiologia Plantarum* 106(1):47-52. 1999.

**24. Response of blackbrush (*Coleotyne ramosissima*) seedlings to inoculation with arbuscular mycorrhizal fungi.** Pendleton, R. L.; Pendleton, B. K.; Warren, S. D. IN: USDA Forest Service, Rocky Mountain Research Station, Proceedings RMRS-P-11, p. 245-251. Proceedings: shrubland ecotones. 1999.

**25. Responses of winterfat seeds and seedlings to desiccation.** Hou, J. Q.; Romo, J. T.; Bai, Y.; Booth, D. T. Journal of Range Management 52(4):387-393. 1999.

**26. The role of endophytic fungi in the survival and establishment of fourwing saltbush (*Atriplex canescens* [Pursh] Nutt.) in an arid environment.** Barrow, J. R.; Feder, L.; Monger, H. C. IN: USDA Forest Service, Rocky Mountain Research Station, Proceedings RMRS-P-11, p. 252-255. Proceedings: shrubland ecotones. 1999.

**27. Seed germination and seedling growth of *Alnus maritima* from its three disjunct populations.** Schrader, J. A.; Graves, W. R. Journal of the American Society for Horticultural Science 125(1):128-134. 2000.

**28. Seed germination ecology of *Lesquerella lyrata* Rollins (Brassicaceae), a federally threatened winter annual.** Baskin, C. C.; Baskin, J. M. Natural Areas Journal 20(2):159-165. 2000.

**29. Seed germination in Genisteeae (Fabaceae) from south-west Spain.** Lopez, J.; Devesa, J. A.; Ruiz, T.; Omega-Olivencia, A. Phytion 39(1):107-129. 1999.

**30. Seed germination of *Rhododendron chapmanii*: influence of light and temperature.** Arocha, L. O.; Blazich, F. A.; Warren, S. L.; Thetford, M.; Berry, J. B. Journal of Environmental Horticulture 17(4):193-196. 1999.

**31. Seed germination patterns in green dragon (*Arisaema dracontium*, Araceae).** Yang, J.; Lovett-Doust, J.; Lovett-Doust, L. American Journal of Botany 86(8):1160-1167. 1999.

**32. ©Seed germination, seedling emergence, and seed bank ecology of sweet fern (*Comptonia peregrina* (L.) Coult.).** Dow, M. A.; Schwintzer, C. R. Canadian Journal of Botany 77(9):1378-1386. 1999.

**33. ©Seed yield of three *Bromus* species native to western Canada.** May, K. W.; Willms, W. D.; Stout, D. G.; Coulman, B.; Fairey, N. A.; Hall, J. W. Canadian Journal of Plant Science 79:551-555. 1999.

**34. ©Seeds of *Thalictrum mirabile* (Ranunculaceae) require cold stratification for loss of nondeep simple morphophysiological dormancy.** Walck, J. L.; Baskin, C. C.; Baskin, J. M. Canadian Journal of Botany 77 (12):1769-1776. 1999.

**35. Timing is everything.** Beattie, D. J. American Nurseryman 191(4):28-30, 32-34. 2000. Understanding propagation timing

of perennials can help growers get their plants to customers within the desired sales window.

**36. Volunteers and planting techniques for restoring southwestern Idaho riparian habitats.** Dudley, M. IN: USDA Forest Service, Rocky Mountain Research Station, Proceedings RMRS-P-11, p.266-273. 1999.

**37. ©Woody plant restoration and natural regeneration in wet meadow at Coomonderry Swamp on the south coast of New South Wales.** de Jong, N. H. Marine and Freshwater Research 51:81-89. 2000.

**38. Wyoming big sagebrush (*Artemisia tridentata* ssp. *wyomingensis*) seedling growth and maternal plant stand position.** Hild, A. L.; Christensen, B.; Maier, A. IN: USDA Forest Service, Rocky Mountain Research Station, Proceedings RMRS-P-11, p.287-289. Proceedings: shrubland ecotones. 1999.

**SO. Growing native Hawaiian plants: a how-to guide for the gardener.** Bornhorst, H. L. The Bess Press, Honolulu, Hawaii. 78 p. 1996. Provides information on propagation and use of over 40 species of ground covers, shrubs, vines, trees, and ferns. ORDER FROM: The Bess Press, 3565 Harding Ave., Honolulu, Hawaii 96816. 808-734-7159. [www.besspress.com](http://www.besspress.com).

**SO. Nursery sources for California native plants.** Showers, M. A. California Division of Mines and Geology, DMG Open-File Report 90-04. Revised. 1999. Lists 135 suppliers of California native plants, and approximately 1600 native California taxa. ORDER FROM: Division of Mines and Geology, P.O. Box 2980, Sacramento, CA 95812-2980. Price: \$10.00.

## Fertilization and Nutrition



**39. ©Above- and below-ground growth of white spruce seedlings with roots divided into different substrates with or without controlled-release fertilizer.** Krasowski, M. J.; Owens, J. N.; Tackaberry, L. E.; Massicotte, H. B. Plant and Soil 217:131-143. 1999.

40. © **Ammonium and nitrate uptake by Eucalyptus nitens: effects of pH and temperature.** Garnett, T. P.; Smethurst, P. J. *Plant and Soil* 214:133-140. 1999.
41. **Boron fertilizer product and concentration influence spray water pH.** Peryea, F. J.; Lageschulte, J. M. *HortTechnology* 10(2):350-353.2000.
42. **Development of the press extraction method for plug substrate analysis: effects of variable extraction force on pH, electrical conductivity, and nutrient analysis.** Scoggins, H. L.; Nelson, P. V.; Bailey, D. A. *HortTechnology* 10(2):367-369. 2000.
43. © **Effect of aluminum on the growth and nutrition of tulip-poplar seedlings.** Lux, H. B.; Gunning, J. R. *Canadian Journal of Forest Research* 29(12):2003-2007. 1999.
44. © **Effect of elevated CO<sub>2</sub> and varying nutrient application rates on physiology and biomass accumulation of Sitka spruce (Picea sitchensis).** Murray, M. B.; Smith, R. L.; Friend, A.; Jarvis, P. G. *Tree Physiology* 20 (7):421-434. 2000.
45. © **Effect of meatworks effluent irrigation on soil, tree biomass production and nutrient uptake in Eucalyptus globulus seedlings in growth cabinets.** Guo, L. B.; Sims, R. E. H. *Bioresource Technology* 72:243-251. 2000.
46. © **Fertilizer banding influence on spatial and temporal distribution of soil inorganic nitrogen in a corn field.** Zebarth, B. J.; Younie, M. F.; Paul, J. W.; Hall, J. W.; Telford, G. A. *Soil Science Society of America Journal* 63 (6):1924-1933. 1999.
47. **For plug nutrition, nitrogen matters.** van Iersel, M. *Greenhouse Management and Production* 20(3):35-37, 40-41. 2000. Plug growth and quality depend mainly on nitrogen. Potassium and phosphorus supplied at approximately 10% of the nitrogen content should provide ample amounts.
48. **A global approach to mineral nutrition based on the growth needs of seedlings produced in forest tree nurseries.** Langlois, C. G.; Gagnon, J. IN: *Plant nutrition: from genetic engineering to field practice*, p. 303-306. N.J. Barrow, ed. Kluwer Academic Publishers. 1993. Fertilization scheduling using the computerized system PLANTEC.
49. © **Growth and nitrogen nutrition of Chinese fir seedlings exposed to nutrient loading and fertilization.** Xu, X.; Timmer, V. R. *Plant and Soil* 216:83-91. 1999.
50. © **Growth, nutrient dynamics, and ectomycorrhizal development of container-grown Picea mariana seedlings in response to exponential nutrient loading.** Quoreshi, M.; Timmer, V. R. *Canadian Journal of Forest Research* 30(2):191-201. 2000.
51. © **The impact of elevated atmospheric CO<sub>2</sub> and nitrate supply on growth, biomass allocation, nitrogen partitioning and N<sub>2</sub> fixation of Acacia melanoxylon.** Schortemeyer, M.; Atkin, O. K.; McFarlane, N.; Evans, J. R. *Australian Journal of Plant Physiology* 26:737-747. 1999.
52. **Leaching of nitrogen from container plants grown under controlled fertigation regimes.** Andersen, L.; Hansen, C. W. *Journal of Environmental Horticulture* 18(1):8-12.2000.
53. **Micros yes, lime no!** Wright, A.; Wright, R.; Niemiera, A.; Harris, R. *Nursery Management and Production* 16(3):53-56, 58. 2000. Trees grown in pine bark get calcium, magnesium from water and media.
54. **Nutrition problems? You should be using Pour Thru.** Whipker, B. E.; Fonteno, W. C.; Cavins, T. J.; Gibson, J. L. *Greenhouse Management and Production* 20(3):28-34. 2000.
55. **Nutritional effects on transplant root and shoot growth - a review.** Zandstra, J. W.; Liptay, A. *Acta Horticulturae* 504:23-31. 1999.
56. © **Production of containerized Jeffrey pine planting stock for harsh sites: growth and nutrition as influenced by controlled-release fertilization.** Walker, R. F.; Hunt, C. D. *Western Journal of Applied Forestry* 15(2):86-91. 2000.
57. **Response of Scots pine and European larch seedlings to nitrogen and sulphur shortage.** Malagoli, M.; Bottacin, A. *Phyton* 39(4):123-130. 1999.
58. © **Response of sugar maple (Acer saccharum) seedlings to manganese.** McQuattie, C. J.; Schier, G. A. *Canadian Journal of Forest Research* 30(3):456-467. 2000.
59. © **Review of phosphorus acid and its salts as fertilizer materials.** Rickard, D. A. *Journal of Plant Nutrition* 23(2):161-180. 2000.

60. **The role of trace elements on the growth of sandal seedlings at the nursery stage.** Kamala, B. S.; Angadi, V. G. IN: Sandal and its products, p.188-191. Proceedings of a seminar held Dec. 18-19, 1997, Bangalore, India. Australian Centre for International Research. 1998.

61. **The significance of ectomycorrhizal fungi for sulfur nutrition of trees.** Rennenberg, H. *Plant and Soil* 215: 115-122. 1999.

62. **Uptake of P from apatite by *Pinus sylvestris* seedlings colonized by different ectomycorrhizal fungi.** Wallander, H. *Plant and Soil* 218:249-256. 2000.



## General and Miscellaneous

63. **An econometric analysis of the costs of sequestering carbon in forests.** Plantinga, A. J.; Mauldin, T.; Miller, D. J. *American Journal of Agricultural Economics* 81:812-824. 1999.

64. **Economics of afforestation for carbon sequestration in western Canada.** van Kooten, G. C.; Stennes, B.; Krcmar-Nozic, E.; van Gorkom, R. *Forestry Chronicle* 76(1):165-172. 2000.

65. **Species selection decisions in natural and artificial regeneration systems.** Haag, C. L.; Hatch, J. A. IN: Society of American Foresters, 1996 proceedings, p.170-173. 1997. Reviews one company's forest land classification system using soil maps and GIS, to address needs for artificial regeneration, species selection, pre-commercial thinning, and herbicide application.

66. **Working trees for carbon cycle balance.** Lincoln, NE: USDA National Agroforestry Center. 2000. 2 p.



## Genetics and Tree Improvement

67. **Variation among open-pollinated families of *Picea abies* (L.) Karst. in response to simulated frost desiccation.** Danusevicius, D.; Jonsson, A.; Eriksson, G. *Silvae Genetica* 48(3-4):158-167. 1999.

68. **Variation in seed characteristics in provenances of sandal (*Santalum album* L.).** Sinduveerendra, H. C.;

Ramalakshmi, S.; Mallesha, B. B.; Ananthpadmanbha, H. S.; Rangaswamy, C. R. IN: Sandal and its products, p.123-125. Proceedings of a seminar held Dec. 18-19, 1997, Bangalore, India. Australian Centre for International Research. 1998.

## Mycorrhizae & Beneficial Microorganisms



69. **Ectomycorrhizal colonization of *Picea engelmannii* x *Picea glauca* seedlings planted across cut blocks of different sizes.** Hagerman, S. M.; Jones, M. D.; Bradfield, G. E.; Sakakibara, S. M. *Canadian Journal of Forest Research* 29(12):1856-1870. 1999.

70. **Effect of inoculum type and inoculation dose on ectomycorrhizal development and growth of *Acacia nilotica* seedlings inoculated with *Pisolithus tinctorius* in a nursery.** Vijaya, T.; Srivasuki, K. P. *Biologia* 54 (4):439-442. 1999.

71. **Effect of *Laccaria bicolor* strains inoculated on Douglas-fir (*Pseudotsuga menziesii*) several years after nursery inoculation.** Selosse, M. A.; Bouchard, D.; Martin, F.; Le Tacon, F. *Canadian Journal of Forest Research* 30(3):360-371. 2000.

72. **The effect of reduced phosphorus concentration on mycorrhizal development and growth of *Eucalyptus globulus* Labill. seedlings inoculated with 10 different fungi.** Mason, P.; Ingleby, K.; Munro, R. C.; Wilson, J.; Ibrahim, K. *Forest Ecology and Management* 128(1):249-258. 2000.

73. **In situ analysis of introduced *Frankia* populations in root nodules of *Alnus glutinosa* grown under different water availability.** Nickel, A.; Hahn, D.; Zepp, K.; Zeyer, J. *Canadian Journal of Botany* 77 (9):1231-1238. 1999.

74. **Interactions of nitrogen and phosphorus on mycorrhizal development and shoot growth of *Eucalyptus globulus* (Labill.) seedlings inoculated with two different ectomycorrhizal fungi.** Mason, P. A.; Ingleby, K.; Munro, R. C.; Wilson, J.; Ibrahim, K. *Forest Ecology and Management* 128(1):259-268. 2000.

75. ©Mycorrhizal development and growth of inoculated *Eucalyptus globulus* (Labill.) seedlings in wet and dry conditions in the glasshouse. Mason, P. A.; Ibrahim, K.; Ingleby, K.; Munro, R. C.; Wilson, J. Forest Ecology and Management 128(1):269-277. 2000.

76. Mycorrhizal status and morphotype diversity in *Tilia cordata* - a pilot study of nurseries and urban habitats. Nielsen, J. S.; Rasmussen, H. N. Acta Horticulturae 496:451-459. 1999.

77. ©Plant and fungal responses to elevated atmospheric CO<sub>2</sub> in mycorrhizal seedlings of *Betula pendula*. Rouhier, H.; Read, D. J. Environmental and Experimental Botany 42:231-241. 1999.

78. ©Water-retentive polymers increase nodulation of actinorhizal plants inoculated with *Frankia*. Kohls, S. J.; Baker, D. D.; Kremer, D. A.; Dawson, J. O. Plant and Soil 214:105-115. 1999.



## Nursery Structures & Equipment

---

79. 4 transplanting tasks you can mechanize. Bartok, J. W., Jr. Greenhouse Management and Production 20 (5):78-79. 2000. Tray and pot dispensers; dibblers; watering tunnels; taggers.

80. 8 tips for more uniform greenhouse temperatures. Bartok, J. W., Jr. Greenhouse Management and Production 20(1):61-62. 2000.

81. Computer anticipates heating, cooling needs. Woolsey, J. Greenhouse Management and Production 20 (2):48-50. 2000.

82. Dream machines. Scholssberg, M. American Nurseryman 191(5):28-30, 32-33. 2000. Mechanization is the key for dealing with the labor shortage, but the specialized equipment needed is often not available.

83. Equipment technologies for precision agriculture. Stombaugh, T. S.; Shearer, S. Journal of Soil and Water Conservation 55(1):6-11. 2000. Highlights some of the recent development in precision agriculture, including use of global positioning systems, sensor technologies, yield monitors, and variable rate application equipment.

84. Go with the flow. Simmons, J. D.; Hannigan, T. E. Resource 7(5):9-10. 2000. System measures air movement from large ventilation fans.

85. The greenhouse glazing revolution. Fornari, F. Greenhouse Management and Production 20(4):31-33. 2000. Greenhouse covering manufacturers and researchers are working to alter light transmission to significantly impact plant growth and development.

86. Heat waves. Greenhouse Grower 17(14):46, 48, 49. 1999. Explores the future of heating systems and alternative energy sources.

87. Improving glazings. Giacomelli, G. Greenhouse Management and Production 20(4):37-39. 2000.

88. Keep your cool in humid areas. Davis, T. Greenhouse Management and Production 20(5):55, 56, 58, 60. 2000.

89. Maintain your cool. Hopkins, M. Greenhouse Grower 18(4):49-50, 52-55. 2000. Follow these tips for getting the most out of your cooling, ventilating, and shading systems.

90. Make the greenhouse roof work for you. Svenson, S. E. Greenhouse Management and Production 20 (4):26-29. 2000. Find out which working-roof structure designs are available and the advantages they offer growers.

91. Raging toward the machines. Henne, L. Greenhouse Grower 18(3):24, 26-27, 29. 2000. Industry trends drive growers to automate.

92. Should you use supplemental lighting? Both, A. J. Greenhouse Management and Production 20(5):42-46, 48-50. 2000.



## Outplanting Performance

---

93. Adaptability of spruce seedlings for forest restoration in interior and south central Alaska. Youngblood, A.; Newton, M.; Cole, E. C. IN: Stocking standards and reforestation methods for Alaska, p.51-56. University of Alaska Fairbanks, Agricultural and Forestry Experiment Station, Misc. Publication 99-8. 1999.

94. Advantages and disadvantages of machine planting in south-central Alaska. Peterson, A.; Charton, J. IN: Stocking standards and reforestation methods for Alaska, p.68-73. University of Alaska Fairbanks, Agricultural and Forestry Experiment Station, Misc. Publication 99-8. 1999.

95. ©An assessment of *Cylindrocarpon* on container western white pine seedlings after outplanting. Dumroese, R. K.; James, R. L.; Wenny, D. L. *Western Journal of Applied Forestry* 15(1):5-7. 2000.

96. Competitive effects of residual understory and early successional vegetation on initial stocking following ecosystem disturbance. Schulz, B. IN: Stocking standards and reforestation methods for Alaska, p.32-42. University of Alaska Fairbanks, Agricultural and Forestry Experiment Station, Misc. Publication 998. 1999.

97. Direct-seeding acorns for bottomland oak reforestation: guidelines for success. Clatterback, W. K. IN: Society of American Foresters, 1997 proceedings, p.397-398. 1998.

98. Effect of desiccation during cold storage on planting stock quality and field performance in forest species. Garriou, D.; Guard, S.; Guehl, J. M.; Genere, B. *Annals of Forest Science* 57:101-111. 2000.

99. ©Effects of planting stock quality and browse protection-type on height growth of northern red oak and eastern white pine. Ward, J. S.; Gent, M. P. N.; Stephens, G. R. *Forest Ecology and Management* 127:205-216. 2000.

100. Fertilization at the time of planting: nine-year response of Douglas-fir, Engelmann spruce and lodgepole pine in the southern interior ICH. Heineman, J. British Columbia Ministry of Forests, Forest Site Management Section, Silviculture Note 19. 5 p. 1999.

101. Mechanical site preparation and tree planting equipment for Alaska. Converse, C. M. IN: Stocking standards and reforestation methods for Alaska, p.57-67. University of Alaska Fairbanks, Agricultural and Forestry Experiment Station, Misc. Publication 99-8. 1999.

102. Opportunities for improvements to reforestation success. Krasowski, M. J.; Elder, R. J. F. British Columbia Ministry of Forests, Extension Note 43. 15 p. 2000. Suggested ways include: Planting into organic soil substrates; Microsite selection; Planting depth; Closing the planting hole.

103. ©Root deformation in plantations of container-grown Scots pine trees: effects on root growth, tree stability and stem straightness. Lindstrom, A.; Rune, G. *Plant and Soil* 217:29-37. 1999.

104. Seedling stock types for outplanting in Alaska. Landis, T. D. IN: Stocking standards and reforestation methods for Alaska, p.78-84. University of Alaska Fairbanks, Agricultural and Forestry Experiment Station, Misc. Publication 99-8. 1999.

105. ©Survival, growth, and photosynthesis of tree seedlings competing with herbaceous vegetation along a water-light-nitrogen gradient. Davis, M. A.; Wrage, K. J.; Reich, P. B.; Tjoelker, M. G.; Schaeffer, T.; Muermann, C. *Plant Ecology* 145:341-350. 1999.

106. Tree planting equipment. Lowman, B. IN: Stocking standards and reforestation methods for Alaska, p.74-77. University of Alaska Fairbanks, Agricultural and Forestry Experiment Station, Misc. Publication 99-8. 1999.

107. © Two seedling rooting media and subsequent growth of nitrogen-fixing plants in a New Zealand coastal sand-dune environment. Gadgil, R. L.; Sandberg, A. M.; Lowe, A. T. *New Zealand Journal of Forestry Science* 29(2):195-202. 1999.

## Pest Management



108. 10 steps to minimize disease. Nameth, S. T. *Greenhouse Management and Production* 20(2):58-60. 2000.

109. Antifungal properties of Norway spruce (*Picea abies* (L.) Karst.) seedlings homogenates. Kozłowski, G.; Metraux, J. P. *Acta Societatis Botanicorum Poloniae* 68(3):191-195. 1999.

110. ©Biochemical interactions of conifer seedling roots with *Fusarium spp.* Asiegbu, F. O.; Kacprzak, M.; Daniel, G.; Johansson, M.; Stenlid, J.; Manka, M. *Canadian Journal of Microbiology* 45:923-935. 1999.

111. ©Biocontrol within the context of soil microbial communities: a substrate-dependent phenomenon. Hoitink, H. A. J.; Boehm, M. J. *Annual Review of Phytopathology* 37:427-446. 1999.

112. Coniferous seeds and seedlings mycoflora-treatments in growth chambers. Taut, L.; Sesan, T. p.177-181 IN: Disease/environment interactions in forest decline. Proceedings of a workshop of the IUFRO Working Party 7.02.06, held Vienna, Austria, March 16-24, 1998. 1999.

113. ©Control of soilborne plant pathogens by incorporating fresh organic amendments followed by tarping. Blok, W. M.; Lamers, J. G.; Termorshuizen, A. J.; Bollen, G. J. *Phytopathology* 90(3):253-259. 2000.
114. Controlling thrips biologically. Davis, T. *Greenhouse Management and Production* 20(3):49-50, 53. 2000. A New York grower uses *Neoseiulus cucumeris* to keep western flower thrips under control.
115. ©Differential effect of chitosan on root rot fungal pathogens in forest nurseries. Laflamme, P.; Benhamou, N.; Bussieres, G.; Dessureault, M. *Canadian Journal of Botany* 77(10):1460-1468. 1999.
116. Effect of botanical extracts on the population density of *Fusarium oxysporum* in soil and control of *Fusarium wilt* in the greenhouse. Bowers, J. H.; Locke, J. C. *Plant Disease* 84(3):300-305. 2000.
117. Evaluation of commercial deer repellents on ornamentals in nurseries. Lemieux, N. C.; Maynard, B. K.; Johnson, W. A. *Journal of Environmental Horticulture* 18(1):5-8. 2000.
118. ©Evidence for induced systemic protection to fusiform rust in loblolly pine by plant growth-promoting rhizobacteria. Enebak, S. A.; Carey, W. A. *Plant Disease* 84(3):306-308. 2000.
119. ©First report of *Gloeosporidina* sp. isolated from lesions on shoots and leaves of *Eucalyptus nitens* and *E. globulus* in Australia. Yuan, Z. Q.; Wardlaw, T.; Mohammed, C. *Plant Disease* 84(5):510-S 12. 2000.
120. Fumigation and other approaches to management of soilborne disease problems in nurseries. Gordon, T. R. IN: Western International Forest Disease Work Conference and Western Forest Insect Work Conference, proceedings of the fifth joint meeting, p.84. 1999.
121. ©*Fusarium* species from a forest nursery soil in western Patagonia and reduction of their population by soil solarization. Lori, G.; Salerno, M. L.; Wolcan, S.; Gimenez, J.; Basil, G. *Journal of Plant Diseases and Protection* 106(4):363-371. 1999.
122. ©Geographical distribution of *Erwinia salicis* strains, the cause of watermark disease of willows. Goven, K.; Davis, J. M. L.; Turner, J. G. *European Journal of Forest Pathology* 29:347-363. 1999.
123. Growth phase of bare-root Scots pine seedlings and their susceptibility to *Grentmeniella abietina*. Petaisto, R. L. *Silvae Fennica* 33(3):179-185. 1999.
124. Hemlock woolly adelgid invades Maine. *American Nurseryman* 191(2): 10. 2000.
125. ©Integrated control of *Fusarium* damping off in conifer seedlings. Chakravarty, P.; Khasa, D.; Dancik, B.; Sigler, L.; Wichlacz, M.; Trifonov, L. S.; Ayer, W. A. *Journal of Plant Diseases and Protection* 106(4):342-352. 1999.
126. Managing fungus gnats: a common spring problem. Gilrein, D. *Greenhouse Management and Production* 20(5):76-77. 2000.
127. The nematode advantage. Smith-Fiola, D.; Gaugler, R. *American Nurseryman* 191(4):90-92, 94, 96, 98, 100, 102. 2000.
128. New fungicides help control *Pythium* crown and root rot. Hausbeck, M. *Greenhouse Management and Production* 20(4):51-52. 2000.
129. New weapons in ornamental disease control. Beaver, J.; Mathers, H. *The Digger* 44(4):17-18, 20. 2000.
130. Pathogenic strains of *Pythium* spp. isolated from trees and shrubs in Madrid area (Spain). Tello, M. L.; Redondo, C.; Mateo-Sagasta, E. *Acta Horticulturae* 496:127-130. 1999.
131. ©Plant parasitic nematodes from a forest tree nursery in southern Spain with some notes about the influence of soil storage on the quantitative recovery of *Meloidogyne arenaria*. Talavera, M.; Magunacelaya, J. C.; Tobar, A. *Nematology* 1(3):261-266. 1999.
132. A rapid bioassay for screening rhizosphere microorganisms for their ability to induce systemic resistance. Han, D. Y.; Coplin, D. L.; Bauer, W. D.; Hoitink, H. A. J. *Phytopathology* 90(4):327-332. 2000.
133. A regional survey of deer damage throughout northeast nurseries and orchards. Lemieux, N.; Maynard, B. K.; Johnson, W. A. *Journal of Environmental Horticulture* 18(1):1-4. 2000.
134. Root rots and recirculated water. Mathers, H. *The Digger* 44(4):48. 2000.
135. Root rots, recirculated water and disinfectants. Mathers, H. *The Digger* 44(3):46-47. 2000.



**136. Shoreflies are more than just a nuisance.**

Cloyd, R. Greenhouse Management and Production 20(3):70-71. 2000.

**137. ©Solid formulations of binucleate *Rhizoctonia* isolates suppress *Rhizoctonia solani* and *Pythium ultimum* in potting medium.** Harris, A. R.

Microbiological Research 154:333-337. 2000.

**138. *Sphaeropsis sapinea* as a nursery pathogen: experience with red pine in Wisconsin.** Stanosz, G.

R.; Blodgett, J. T.; Smith, D. R. IN: Western International Forest Disease Work Conference and Western Forest Insect Work Conference, proceedings of the fifth joint meeting, p.84-86. 1999.

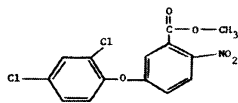
**139. Studies on the sap-sucking pests of *Santalum album* L. in nurseries and plantations.** Remadevi, O.

K.; Muthukrishnan, R.; Santhakumaran, L. N. IN: Sandal and its products, p.200-203. Proceedings of a seminar held Dec. 18-19, 1997, Bangalore, India. Australian Centre for International Research. 1998. .

**140. Towards a more sustainable agriculture system: the effect of glucosinolates on the control of soilborne diseases.** Rosa, E. A. S.;

Rodrigues, P. M. F. Journal of Horticultural Science and Biotechnology 74 (6):667-674. 1999.

## Pesticides



**141. Where are pests entering your greenhouse?**

Teerling, C.; Murphy, G. Greenhouse Management and Production 20(3):54-56. 2000.

**142. ©Adjuvants and herbicidal efficacy - present status and future prospects.** Zabkiewicz, J. A.

Weed Research 40:139-149. 2000.

**143. Applicator beware!** Gainer, B. L. American Nurseryman 191(2):70-72, 74, 76-77. 2000. If pesticides are applied improperly, they can do more harm than good. Spray drift, nonuniform application, double application, inappropriate chemical or rate, inadequate mixing, or accumulation of chemicals may be the culprit.

**144. ©Natural products as sources of herbicides: current status and future trends.** Duke, S. O.;

Dayan, F. E.; Romagni, J. G.; Rimando, A. M. Weed Research 40:99-111. 2000.

**145. ©Accurate root length measurement by image analysis.** Kimura, K.;

Kikuchi, S.; Yamasaki, S. Plant and Soil 216:117-127. 1999.

## Seedling Physiology and Morphology



**146. ©Chlorophyll fluorescence and CO<sub>2</sub> assimilation of black spruce seedlings following frost in different temperature and light conditions.**

Lamontagne, M.; Bigras, F. J.; Margolis, H. A. Tree Physiology 20 (4):249-255. 2000.

**147. ©Cold hardiness in coastal, montane, and inland populations of *Populus trichocarpa*.** McCa-

mant, T.; Black, R. A. Canadian Journal of Forest Research 30(1):91-99. 2000.

**148. ©Different responses to shade of evergreen and deciduous oak seedlings and the effect of acorn size.** Ke, G.;

Werger, M. J. A. Acta Oecologia 20(6):579-586. 1999.

**149. Effect of water stress conditioning on the water relations, root growth capacity, and the nitrogen and non-structural carbohydrate concentration of *Pinus halepensis* Mill. (Aleppo pine) seedlings.** Villar-Salvador, P.;

Ocana, L.; Penuelas, J.; Carrasco, I. Annals of Forest Science 56:459-465. 1999.

**150. ©Effects of photoperiod and thermal time on the growth rhythm of *Pinus sylvestris* seedlings.**

Partanen, J.; Beuker, E. Scandinavian Journal of Forest Research 14(6):487-497. 1999.

**151. ©Effects of resource availability on carbon allocation and developmental instability in cloned birch seedlings.** Lappalainen, J. H.;

Martel, J.; Lempa, K.; Wilsey, B.; Ossipov, V. International Journal of Plant Sciences 161(1):119-125. 2000.

**152. ©Effects of xylem cavitation and freezing injury on dieback of yellow birch (*Betula alleghaniensis*) in relation to a simulated winter thaw.** Zhu, X. B.;

Cox, R. M.; Arp, P. A. Tree Physiology 20(8):541-547. 2000.

153. ©Frost hardening of *Pinus radiata* seedlings: effects of temperature on relative growth rate, carbon balance and carbohydrate concentration. Greer, D. H.; Robinson, L. A.; Hall, A. J.; Klages, K.; Donrison, H. *Tree Physiology* 20(2):107-114. 2000.

154. ©Gas exchange of irrigated and non-irrigated *Pinus canariensis* seedlings growing outdoors in La Laguna, Canary Islands, Spain. Morales, D.; Peters, J.; Jimenez, M. S.; Tausz, M.; Wonisch, A.; Grill, D. *Zeitschrift für Naturforschung* 54c:693-697. 1999.

155. ©The influence of low light, drought and fertilization on transpiration and growth in young seedlings of *Quercus robur* L. Welander, N. T.; Ottosson, B. *Forest Ecology and Management* 127:139-151. 2000.

156. ©Influence of soil temperature on root freezing tolerance of Scots pine (*Pinus sylvestris* L.) seedlings. Stattin, E.; Lindstrom, A. *Plant and Soil* 217:173-181. 1999.

157. Interactive effects of elevated CO<sub>2</sub> and temperature on water transport in ponderosa pine. Maherali, H.; DeLucia, E. H. *American Journal of Botany* 87 (2):243-249. 2000.

158. ©Interspecific and intraspecific variation in tree seedling survival: effects of allocation to roots versus carbohydrate reserves. Canham, C. D.; Kobe, R. K.; Latty, E. F.; Chazdon, R. L. *Oecologia* 121:1-11. 1999.

159. ©New plant growth regulators protect photosynthesis and enhance growth under drought of jack pine seedlings. Rajasekaran, L. R.; Blake, T. J. *Journal of Plant Growth Regulation* 18:175-181. 1999.

160. Photosynthetic response to flooding of *Acer rubrum* seedlings from wet and dry sites. Anaella, L. B. Whitlow, T. H. *American Midland Naturalist* 143:330-341. 2000.

161. Physiological response of baldcypress seedlings planted in permanently flooded soils. Swirin, T.; Williams, H.; Keeland, B. IN: Society of American Foresters, 1996 proceedings, p.445-447. 1997.

162. ©Root architecture, early development and basal sweep in containerized and bare-rooted Douglas-fir (*Pseudotsuga menziesii*). Sundstrom, E.; Keane, M. *Plant and Soil* 217:65-78. 1999.

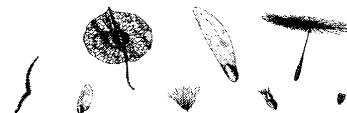
163. Salicylic acid and hydrogen peroxide in abiotic stress signaling in plants. Scott, I. M.; Dat, J. F.; Lopez-Delgado, H.; Foyer, C. H. *Phyton* 39(3):13-17. 1999.

164. ©Seedling leaf structure of New England maples (*Acer*) in relation to light environment. Ashton, P. M. S.; Yoon, H. S.; Thadani, R.; Berlyn, G. P. *Forest Science* 45(4):512-519. 2000.

165. Stock quality and field performance of Douglasfir seedlings under varying degrees of water stress. Genere, B.; Garriou, D. *Annals of Forest Science* 56:501-510. 1999.

## Seed

---



166. Effect of composition of media and seed density on germination of sandal (*Santalum album* L.). Annapurna, D.; Anathapadmanabha, H. S.; Nagaveni, H. C.; Vijayalakshmi, G. IN: Sandal and its products, p.7980. Proceedings of a seminar held Dec. 18-19, 1997, Bangalore, India. Australian Centre for International Research. 1998.

167. Effect of dry storage on germination rate of seeds of coastal Douglasfir (*Pseudotsuga menziesii* (Mirb.) Franco var. *menziesii*). Sorensen, F. C. *Seed Science and Technology* 27(1):91-99. 1999.

168. ©Impact of feeding by *Leptoglossus occidentalis* (Hemiptera: Coreidae) on the major storage reserves of mature Douglasfir (Pinaceae) seeds. Bates, S. L.; Borden, J. H.; Savoie, A.; Blatt, S. E.; Lait, C. G.; Kermod, A. R. *Canadian Entomologist* 132:91-102. 2000.

169. An improvement to the topographic tetrazolium testing of Scots pine (*Pinus sylvestris* L.) seeds. Savonen, E. M. *Seed Science and Technology* 27(1):49-57. 1999.

170. The paradigm seedlot vigor assessment system. McNertney, D. C. *Acta Horticulturae* 504:61-67. 1999.

171. Physiological variation in seeds of provenances of sandal (*Santalum album* L.). Ramalakshmi, S.; Rangaswamy, C. R. IN: Sandal and its products, p.121-122. Proceedings of a seminar held Dec. 18-19, 1997, Bangalore, India. Australian Centre for International Research. 1998.

172. ©Regulation of the germination of Aleppo pine (*Pinus halepensis*) by nitrate, ammonium, and gibberellin, and its role in post-fire forest regeneration. Heni-Sever, N.; Eshel, A.; Ne'eman, G. *Physiologic Plantarum* 108(4):390-397. 2000.

173. ©Responses of *Betula pendula*, *Picea abies*, and *Pinus sylvestris* seeds to red/far-red ratios as affected by moist chilling and germination temperature. Ahola, V.; Leinonen, K. *Canadian Journal of Forest Research* 29(11):1709-1717. 1999.

174. Seed germination of selected provenances of Atlantic white-cedar as influenced by stratification, temperature, and light. Jull, L. G.; Blazich, F. A. *HortScience* 35(1):132-135. 2000.

175. Seed germination of two provenances of Atlantic white-cedar as influenced by stratification, temperature, and light. Jull, L. G.; Blazich, F. A.; Hinesley, L. E. *Journal of Environmental Horticulture* 17(4):158-163. 1999.

176. ©Seedwhere: a computer tool to support seed transfer and ecological restoration decisions. McKenney, D. W.; Mackey, B. G.; Joyce, D. *Environmental Modelling and Software* 14:589-595. 1999.

177. Solid matrix priming to enhance germination of loblolly pine (*Pinus taeda*) seeds. Wu, L.; Hallgren, S. W.; Ferris, D. M.; Conway, K. E. *Seed Science and Technology* 27(1):251-261. 1999.

178. ©Structures contributing to the completion of conifer seed germination. Tillman-Sutela, E.; Kauppi, A. *Trees: Structure and Function* 14(4):191-197. 2000.

179. ©Temperature and provenance as two factors affecting *Eucalyptus nitens* seed germination. Humara, J. M.; Lopez, M.; Casares, A.; Majada, J. *Forestry* 73(1):87-90. 2000.

## Soil Management & Growing Media



180. ©Alternatives to methyl bromide in forest nurseries. *Journal of Forestry* 97(11):Focus 1-3. 1999. Reviews the results of USDA Forest Service research and field trials throughout the U.S.

181. Are you buying quality peat and bark? Jacques, D. J.; Morgan, N.; Gautreau, Z. *Greenhouse Management and Production* 20(1):47-50. 2000. Find out what factors have an impact on the Canadian sphagnum peat and composted bark used in commercial mixes.

182. Compost criteria. Rosen, C. J. *American Nurseryman* 91(1):48-51. 2000.

183. Container substrate temperatures affect mineralization of composts. Kraus, H. T.; Mikkelsen, R. L.; Warren, S. L. *HortScience* 35(1):16-18. 2000.

184. Effect of methyl bromide, metham sodium and the biofumigants Indian mustard and canola on the incidence of soilborne fungal pathogens and growth of grapevine nursery stock. Stephens, P. M.; Davoren, C. W.; Wicks, T. *Australasian Plant Pathology* 28:187-196. 1999.

185. ©Effect of peat-based container media on establishment of Scots pine, Norway spruce and silver birch seedlings after transplanting in contrasting water conditions. Heiskanen, J.; Rikala, R. *Scandinavian Journal of Forest Research* 15(1):49-57. 2000.

186. Evaluation of native legumes for use as cover crops. Schartz, R. J.; Janke, R. R. *Journal of Sustainable Agriculture* 15(2/3):45-59. 1999.

187. ©Evaluation of seed germination and growth tests for assessing compost maturity. Warman, P. R. *Compost Science and Utilization* 7(3):33-37. 1999.

188. A hot idea for killing pests. Chellemi, D. O. *Resource* 7(5):1 1-12. 2000. Soil solarization could be an alternative to methyl bromide.

189. Monitoring media in containers. Mathers, H. *The Digger* 44(1):50, 51, 53. 2000.

190. Nitrate concentrations in the root zone estimated using time domain reflectometry. Das, B. S.; Wraith, J. M.; Inskeep, W. P. *Soil Science Society of America Journal* 63(6):1561-1570. 1999.

191. Small-scale measurement of soil water content using a fiber optic sensor. Garrido, F.; Ghodrati, M.; Chendorain, M. *Soil Science Society of America Journal* 63(6):1505-1512. 1999.

192. Time domain reflectometry probe for simultaneous measurement of soil matric potential and water content. Noborio, K.; Horton, R.; Tan, C. S. *Soil Science Society of America Journal* 63(6):1500-1505. 1999.

## Tropical Forestry & Agroforestry



193. ©Demand, propagation and seedling establishment of selected medicinal trees. Netshiluvhi, T. R. South African Journal of Botany 65 (5-6):331-338. 1999.
194. Early survival and growth in field trials of *Aquilaria malaccensis* (Karas) and *Azadirachta excelsa* (Sentang). Hai, L. E.; Shyun, C. Y.; Yusoff, A. M. Journal of Tropical Forest Science 11 (4):852-854. 1999.
195. Effect of different arbuscular mycorrhizal fungi and *Azospirillum* on *Eucalyptus tereticornis* seedlings. Sugavanam, V.; Udaiyan, K.; Devaraj, P. Journal of Tropical Forest Science 12(1):37-43. 2000.
196. ©Effect of nutrient enrichment on native tropical trees planted on Singrauli coalfields, India. Singly A.; Jha, A. K.; Singh, J. S. Restoration Ecology 8 (1):80-86. 2000.
197. ©Effect of oven-heat and boiling on the germination and seedling development of *Dichrostachys cinerea* (L) Wight and Arn (Fabaceae). Idu, M.; Omonhinmin, A. C. Agronomic 19:671-676. 1999.
198. Effect of presowing treatments on germination and seedling growth in *Syzygium cuminii*. Vanangamudi, K.; Venkatesh, A.; Jayaprakash. J.; Vanangamudi, M.; Umarani, R.; Vinaya Rai, R. S. Journal of Tropical Forest Science 11(4):846-848. 1999.
199. Effect of seed size grading on the germination and growth of teak (*Tectona grandis*) seedlings. Indira, E. P.; Chand Basha, S.; Chacko, K. C. Journal of Tropical Forest Science 12(1):21-27. 2000.
200. The effect of various seed pretreatments to improve germination in eight indigenous tree species in the forests of Cameroon. Mapongmetsem, P. M.; Duguma, B.; Nkongmeneck, B. A.; Selegny, E. Annals of Forest Science 56:679-684. 1999.
201. The effects of defoliation and inorganic fertilizers on the growth of some tropical tree seedlings. Agboola, D. A.; Kadiri, M. Journal of Tropical Forest Science 11(4):672-679. 1999.
202. ©Effects of nitrogen source and defoliation on growth and biological denitrogen fixation of *Gliricidia sepium* seedlings. Nygren, P.; Vaillant, V.; Desfontaines, L.; Cruz, P.; Domenach, A. M. Tree Physiology 20(1):33-40. 2000.
203. Establishment of *Grewia tenax* (Forssk.) Fiori from seeds and stem cuttings in the nursery. Elkhalfa, K. F.; Mahmoud, S. M. Arab Gulf Journal of Scientific Research 17(1):85-94. 1999.
204. Field and in vitro methods of propagation of the African locust bean tree (*Parkia biglobosa* (Jacq.) (Benth.)). Teklehaimanot, Z.; Tomlinson, H.; Ng'andwe, M.; Nikiema, N. Journal of Horticultural Science and Biotechnology 75(1):42-49. 2000.
205. ©Germination of *Callitris* seeds in relation to temperature, water stress, priming, and hydration-dehydration cycles. Adams, R. Journal of Arid Environments 43:437-448. 1999.
206. ©Growth and nutritional characteristics of four woody species under nursery conditions and growth after transplantation in semi-arid field conditions at Madurai, India. Paliwal, K.; Kannan, D. Journal of Arid Environments 43:133-141. 1999.
207. ©Growth variability in a Senegalese provenance of *Acacia nilotica* ssp. *tomentosa*. Wolde-Meskel, E.; Sinclair, F. L. Agroforestry Systems 48:207-213. 2000.
208. ©Impact of ecological factors on the regeneration of mangroves in the Cienaga Grande de Santa Marts, Colombia. Elster, C.; Perdomo, L.; Schnetter, M. L. Hydrobiologia 413:35-46. 1999.
209. ©In vitro culture of arbuscular mycorrhizal fungus and *Frankia* for inoculation of micropropagated *Casuarina eguisetifolia* L. Mark, G. L.; Hooker, J. E.; Hahn, A.; Wheeler, C. T. Canadian Journal of Botany 77(9):1391-1397. 1999.
210. Morphology and cultural variation among *Colletotrichum* isolates obtained from tropical forest nurseries. Zakaria, M.; Bailey, J. A. Journal of Tropical Forest Science 12(1):1-20. 2000.
211. *Peltophorum dasyrachis* seedling growth response to different levels of boron. Rose, R.; Royo, A.; Haase, D. Journal of Tropical Forest Science 11 (4):832-845. 1999.

212. **Physiological effects of temperature and thermal stress on the seed germination of *Stryphnodendron polyphyllum*.** Tambelini, M.; Perez, S. C. J. G. A. *Journal of Tropical Forest Science* 11(4):680-689. 1999.
213. **The relationship between growth and foliar nutrient concentrations in *Acacia mangium* seedlings.** Paudyal, B. K.; Nik Muhamad, M. *Journal of Tropical Forest Science* 12(1):62-76. 2000.
214. **Responses of tropical forest tree seedlings to irradiance and the derivation of a light response index.** Agyman, V. K.; Swaine, M. D.; Thompson, J. *Journal of Ecology* 87:815-827. 1999.
215. **Screening of arbuscular mycorrhizal fungi for their symbiotic efficiency with *Tectona grandis*.** Rajan, S. K.; Reddy, B. J. D.; Bagyaraj, D. J. *Forest Ecology and Management* 126(2):91-95. 2000.
216. **Screening *Rhizobium* spp. strains associated with *Gliricidia sepium* along an altitudinal transect in Veracruz, Mexico.** Melchor-Marroquin, J. L.; Vargas-Hernandez, J. J.; Ferrera-Cerrato, R.; Krishnamurthy, L. *Agroforestry Systems* 46:25-38. 1999.
217. **Seed germination and seedling fitness in *Mesua ferrea* L. in relation to fruit size and seed number per fruit.** Khan, M. L.; Bhuyan, P.; Shankar, U.; Todaria, N. P. *Acta Oecologia* 20(6):599-606. 1999.
218. **Single and multi-strain rhizobial inoculation of African acacias in nursery conditions.** Sutherland, J. M.; Odee, D. W.; Muluvi, G. M.; Mclnroy, S. G.; Patel, A. *Soil Biology and Biochemistry* 32:323-333. 2000.
219. **Soil seed flora, germination and regeneration pattern of woody species in an *Acacia* woodland of the Rift Valley in Ethiopia.** Argaw, M.; Teketay, D.; Olsson, M. *Journal of Arid Environments* 43:411-435. 1999.
220. **Studies on seed germination and seedling emergence in *Leucaena leucocephala* (Lam.) de Wit cv. Peru.** Akinola, J. O.; Iji, P. A.; Bonidefaiye, S. O.; Olorunju, S. A. S. *Seed Science and Technology* 27(1):123-129. 1999.
221. **Vegetative propagation of *Khaya ivorensis* (African mahogany): effects of stockplant flushing cycle, auxin and leaf area on carbohydrate and nutrient dynamics of cuttings.** Tchoundjeu, Z.; Leakey, R. R. B. *Journal of Tropical Forest Science* 12(1):77-91. 2000.

50. **Breadfruit: *Artocarpus altilis* (Parkinson) Fosberg.** Ragone, D. *International Plant Genetic Resources Institute*. 77 p. 1997. Includes information on taxonomy, botanical description, origin of species, properties of species, uses, genetic resources, breeding, production areas, ecology, agronomy, limitations of the crop, prospects, and research needs. ORDER FROM: IPGRI. Via delle Sette Chiese 142, 00145 Rome, Italy.

## Vegetative Propagation and Tissue Culture



222. **Cuttings propagation of hybrid *Eucalyptus grandis* x *E. nitens*.** Aimers-Halliday, J.; Dibley, M. J.; Hong, S. O.; Menzies, M. I. *New Zealand Journal of Forestry Science* 29(2):238-250. 1999.
223. **Genotype dependent blue and red light inhibition of the proliferation of the embryogenic tissue of Norway spruce.** Latkowski, M. J.; Kvaalen, H.; Appलगren, M. *In Vitro Cellular and Developmental Biology - Plant* 36(1):57-60. 2000.
224. **Honing your skills.** Gainer, B. L. *American Nurseryman* 191(1):28-30, 32, 34, 36-37. 2000. High quality, sharper tools are essential for successful vegetative propagation.
225. **Improvement of English walnut somatic embryo germination and conversion by desiccation treatments and plantlet development by lower medium salts.** Tang, H.; Ren, Z.; Krczal, G. *In Vitro Cellular and Developmental Biology - Plant* 36(1):47-50. 2000.
226. **Light quality influences germination, root growth and hypocotyl elongation in somatic embryos but not in seedlings of Norway spruce.** Kvaalen, H.; Appलगren, M. *In Vitro Cellular and Developmental Biology - Plant* 35(6):437-441. 1999.
227. **Mineral nutrient and carbohydrate status of loblolly pine during mist propagation as influenced by stock plant nitrogen fertility.** Rowe, D. B.; Blazich, F. A.; Weir, R. J. *HortScience* 34(7):1279-1285. 1999.
228. **Rooting shrub cuttings in media amended with biosolids.** Chong, C.; Hamersma, B.; Bellamy, K. L. *American Nurseryman* 191(6):68-69. 2000.

229. ©Rooting success of cuttings from young *Picea abies* in transition to flowering competent phase. Hannerz, M.; Almqvist, C.; Ekberg, T. Scandinavian Journal of Forest Research 14(6):498-504. 1999.

230. ©Selection and microculture of single embryogenic cell clusters in Japanese conifers: *Picea jezoensis*, *Garix leptolepis* and *Cryptomeria japonica*. Ogita, S.; Sasamoto, H.; Kubo, T. In Vitro Cellular and Developmental Biology - Plant 35(6):428-431. 1999.

231. Shade improves oak and maple rooting. Zaczek, J. J.; Heuser, C. W., Jr.; Steiner, K. C. American Nurseryman 191(2):86, 88-89. 2000.

232. ©Somatic embryogenesis and plantlet development in *Pinus sylvestris* and *Pinus pinaster* on medium with and without growth regulators. Lelu, M. A.; Bastien, C.; Drugeault, A.; Gouez, M. L.; Klimaszewska, K. Physiologia Plantarum 105(4):719-728. 1999.

233. Taking stock. Maynard, B. American Nurseryman 191(4):36-38, 40, 42-43. 2000. Maintaining healthy stock plants helps propagators produce high quality clones of their best species and cultivars.

234. Vegetative propagation of *Acacia* species at the Forest Tree Seed Enterprise in Nghia Binh, Vietnam. Dinh, T. V. IN: Recent developments in *Acacia* planting p.371-372. Proceedings of a workshop held Oct. 27-30, 1997, Hanoi, Vietnam. Australian Centre for International Agricultural Research. 1998.

50. Cultural procedures for propagation of rooted cuttings of Sitka spruce, western hemlock, and Douglas-fir in British Columbia. Wigmore, B. G.; Woods, J. H. British Columbia Ministry of Forests, Working Paper 46. 30 p. 2000. ORDER FROM: Crown Publications, 521 Fort Street, Victoria, BC V8W 1E7 Canada. (250) 386-4636 or download from <http://www.for.gov.bc.ca/hfd/pubs/Docs/Wp/Wp46.htm>



## Water Management

---

235. Controlling pathogens in recirculated water. Moorman, G. W. Greenhouse Management and Production 20(2):28, 30. 2000.

236. Designing an effective RO water system. Trop, A. Greenhouse Management and Production 20(2):2224. 2000. One grower's experience with reverse osmosis.

237. How to clean up recycled water. Freeman, C. Greenhouse Management and Production 20(2):16-19. 2000.

238. Preventing chemigation contamination. Smith, D.; Hoffmann, T.; Notestine, T.; Tung, S. The Digger 43 (9):36-38. 1999.

239. Protect your water system with a good filter. Bartok, J. W., Jr. Greenhouse Management and Production 20(2):61-62. 2000.

240. Remediation of herbicides in runoff water from container plant nurseries utilizing grassed waterways. Briggs, J. A.; Whitwell, T.; Riley, M. B. Weed Technology 13(1):157-164. 1999.



## Weed Control

---

241. Field efficacy of *Dactylaria higginsii* as a bioherbicide for the control of purple nutsedge (*Cyperus rotundus*). Kadir, J. B.; Charudattan, R.; Stall, W. M.; Brecke, B. J. Weed Technology 14(1):1-6. 2000.

242. Glyphosate injury, rainfastness, absorption, and translocation in purple nutsedge (*Cyperus rotundus*). Bariuan, J. V.; Reddy, K. N.; Wills, G. D. Weed Technology 13(1):112-119. 1999.

243. Mulches and subirrigation control weeds in container production. Wilen, C. A.; Schuch, U. K.; Elmore, C. L. Journal of Environmental Horticulture 17 (4):174-180. 1999.

244. Organic weed control - back to the future. Bond, W.; Lennartsson, M. E. K. IN: The 1999 Brightoi Conference - Weeds, p. 929-938. 1999.

245. Postemergence control of bittercress in container-grown crops. Altland, J. E.; Gilliam, C. H.; Olives, J. W.; Edwards, J. H.; Keever, G. J.; Kessler, J. R., Jr.; Eakes, D. J. Journal of Environmental Horticulture 18(1):23-28. 2000.

246. ©Tolerance of southern pine seedlings to clopyralid. South, D. B. Southern Journal of Applied Forestry 24(1):51-56. 2000.

